

King County Regional Approach for Gun Violence Reduction

Keeping the Peace Together



Public Health
Seattle & King County



A Public Health Approach

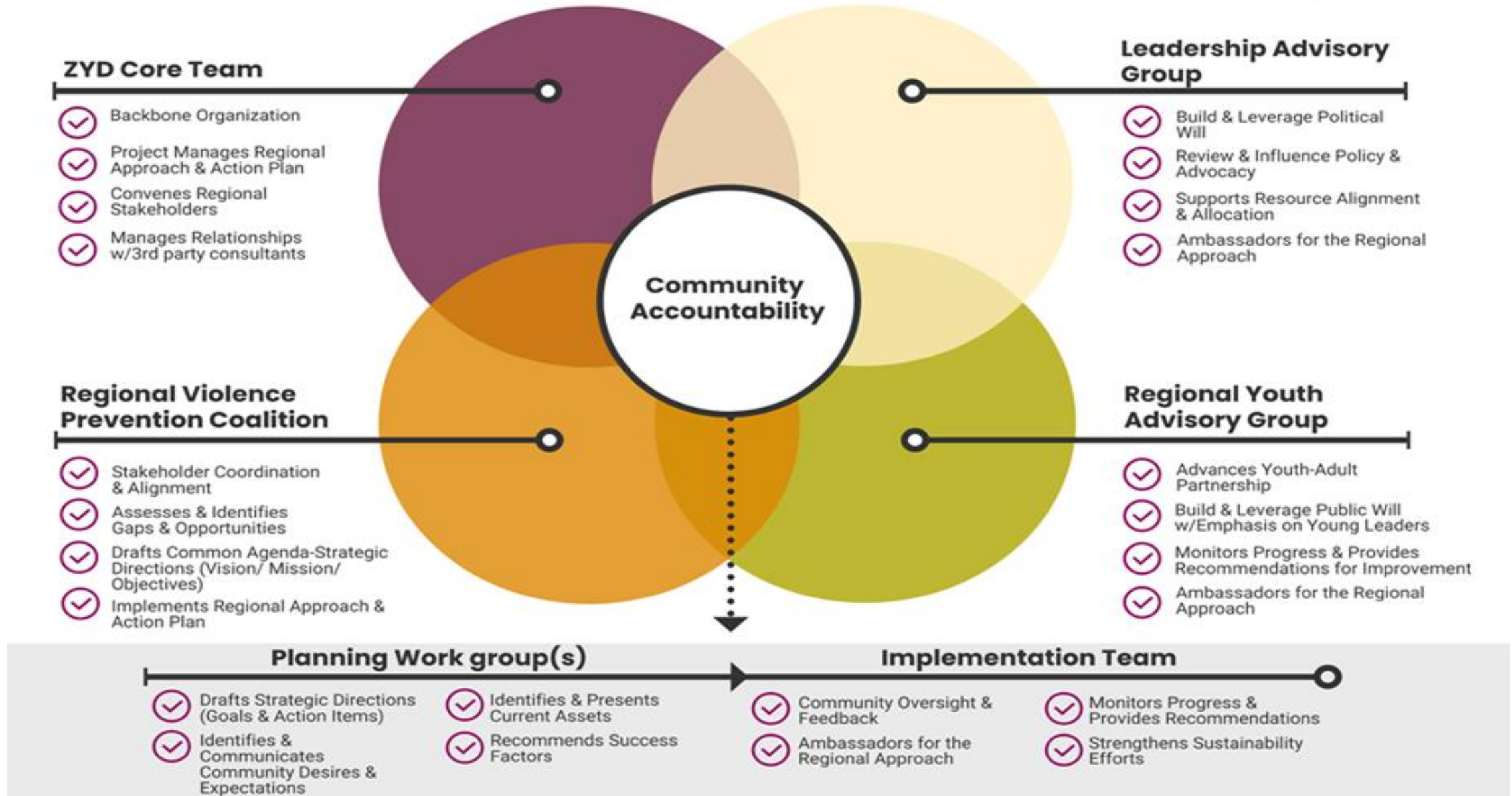
Since early 2021, Public Health- Seattle & King County has been leading an inclusive Community Safety and Well-being Planning process, that calls for a public health approach to ending gun violence.

The two-pronged strategy includes:

Groups that blend community and systems partners to identify solutions and provide recommendations in the domains of Juvenile Justice, Education, Workforce Development, Community-Led Safety and Health & Human Services.

Immediate Response: The Regional Peacekeepers Collective is an overarching umbrella that supports a multi-initiative/multi-organization network to provide Intervention, Prevention and Restoration services including critical incident and hospital-based response, intensive engagement and wrap-around life affirming care and resources to youth and families most impacted by gun violence and unjust systems

Admin Structure for Community Safety & Well-Being Plan



Background & Problem Statement

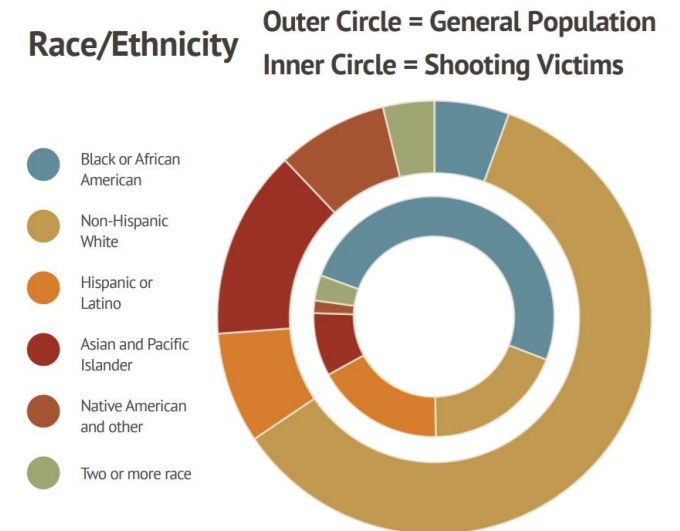
Gun violence is on the rise in Seattle & King County, with approximately 50% of the victims being African-American/Black men and boys. This violence also inflicts trauma on entire families, neighborhoods, and communities.

Homicides are the leading cause of death for young Black/African American men and boys. While the true cost can never be calculated, the CDC estimates that homicides cost the US economy \$26.4 billion every year in medical expenses and work loss costs alone.








According to the 2021 year-end incident report from the King County Prosecutor's Office, the total number of shots fired incidents in 2021 (1405) was up around 54% and the number of overall shooting victims (460) was up 70% over the four year average for 2017-2020.

More specifically, the number of fatal shooting victims (88) was up 54% while the number of nonfatal shooting victims (372) was up 75% over the four-year average..



RPKC Objectives

-  High-intensity Engagement and Support for Youth and Families
-  Critical Incident Response System with Hospital and Community Based
-  Support
-  Wrap Around Care for High-Risk Youth via a Care Team
-  Support and Connection for Families & Younger Siblings
-  Decreased Negative Law Enforcement Contact
-  Additional Community Capacity for Restorative Justice Programs

Community Outreach, Public Awareness and Restorative Events

Theory of Change

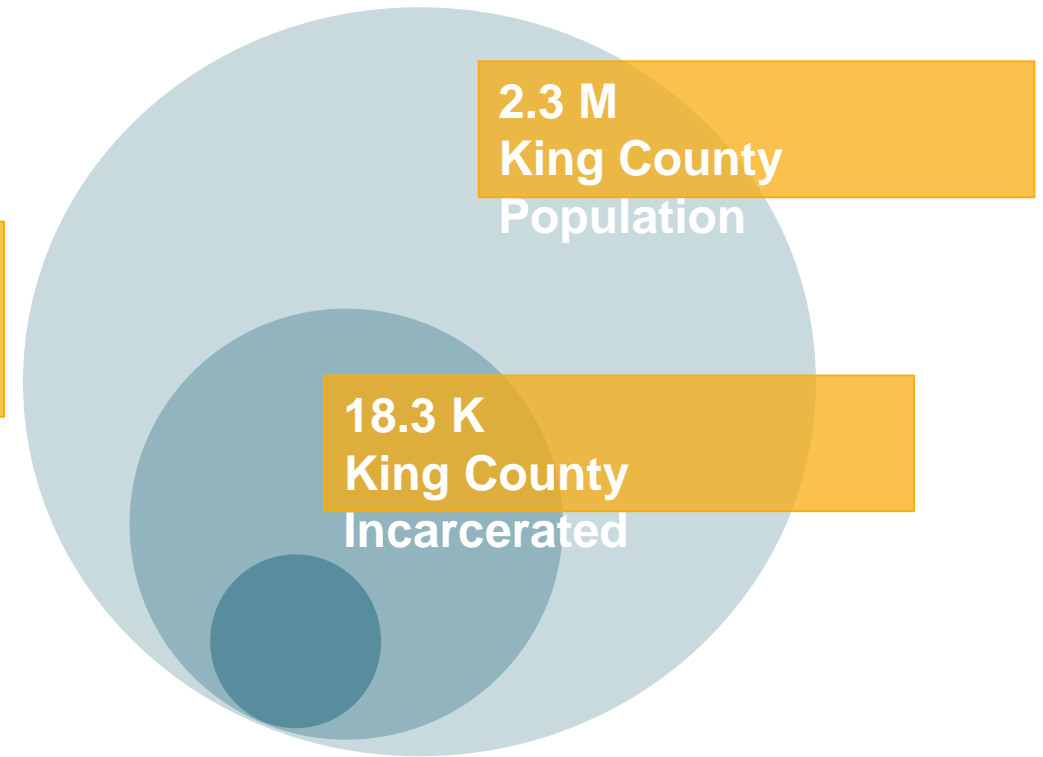
- Place-based social services, offered by culturally reflective providers, help connect young people at greatest risk to the services and support they need to develop lasting self-efficacy and positive community attachment.
- Our community-led public health approach uses data driven strategies to ensure intensive support and wrap services for youth and families most directly involved in incidents of gun violence. Place-based strategies reduce violence by addressing important environmental and social contexts, such as economic and educational opportunity gaps, greening of vacant lots and remediating of active “hot-spots”.
- Compassion-based care is trauma-informed, and emphasizes solution-focused positive youth development, by connecting young people locally to mentorship, skill development, emotional well-being and growth opportunities.

Priority Population Served

As reported by Harborview Medical Center Emergency Room Admission data, 100-150 young people between the ages of 16-24 years of age are seen in the emergency room for gun related injury each year. By zeroing in on these high-risk young people, we can reduce shootings and fatalities by significant numbers.

According to the King County Prosecuting Attorney's Office, there are 50-80 young people per year who emerge in court cases as being at highest risk for gun violence involvement.

100-150 Highly Targeted Highest Risk Youth



The regional approach focuses efforts on those at highest risk, tailoring services to the needs of individual youth and families

Shared Methods of Practice



Community Leadership

- Multi-partner approach, with centralized management, coordination and reporting.

Rigorous Training & Professional Development

- To strengthen and build community capacity, all RPKC partners complete required trainings and teams are supported and managed via weekly meetings, on-going training and organizational level staff supervision and professional development

Coordinated Service Delivery

- Violence interruption, hospital-based intervention, client services, and family restoration services ensuring highest quality of care and support for youth and families.

Program Model

Our **Intervention, Prevention and Restoration (IPR)** framework is focused on rigorous intervention, targeted prevention, and follow-up support for community restoration.

INTERVENTION

Critical incident response and violence interruption based on real time notifications and strategic engagement based on data from shots fired reports.

Hospital Based Intervention

Hot spot remediation and direct community support.

PREVENTION

Connect highest risk youth with credible outreach workers to build resiliency and decrease negative law enforcement contact

Support safe schools through SCSi initiative

Provide access to services and group programs, also for families and siblings.

RESTORATION

Provide intensive support:

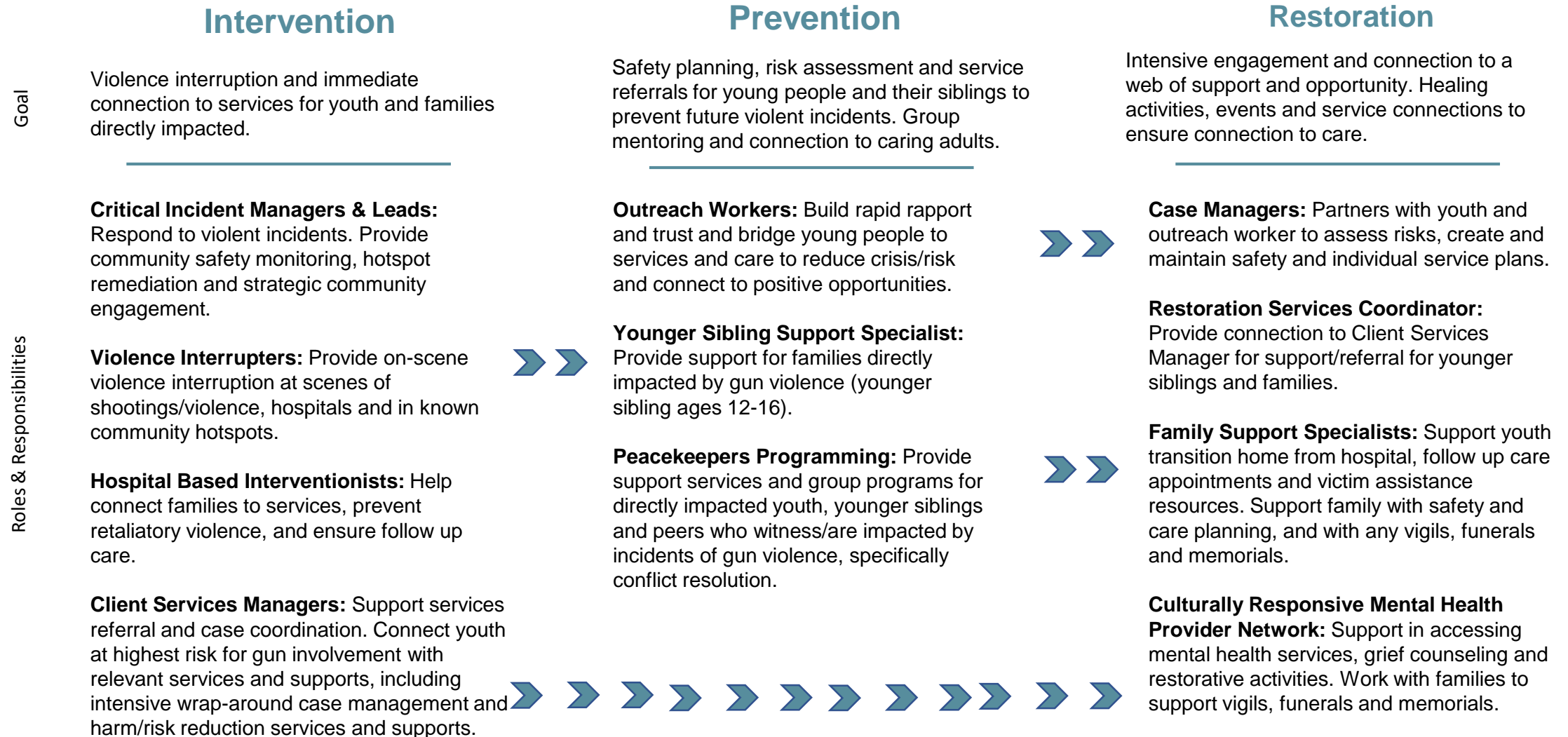
- Care Team- Outreach/ Case Managers
- /Service Navigators
- Client Services
- Restoration Services
- Family/Sibling Support

Community events, with grief and mental health resources.

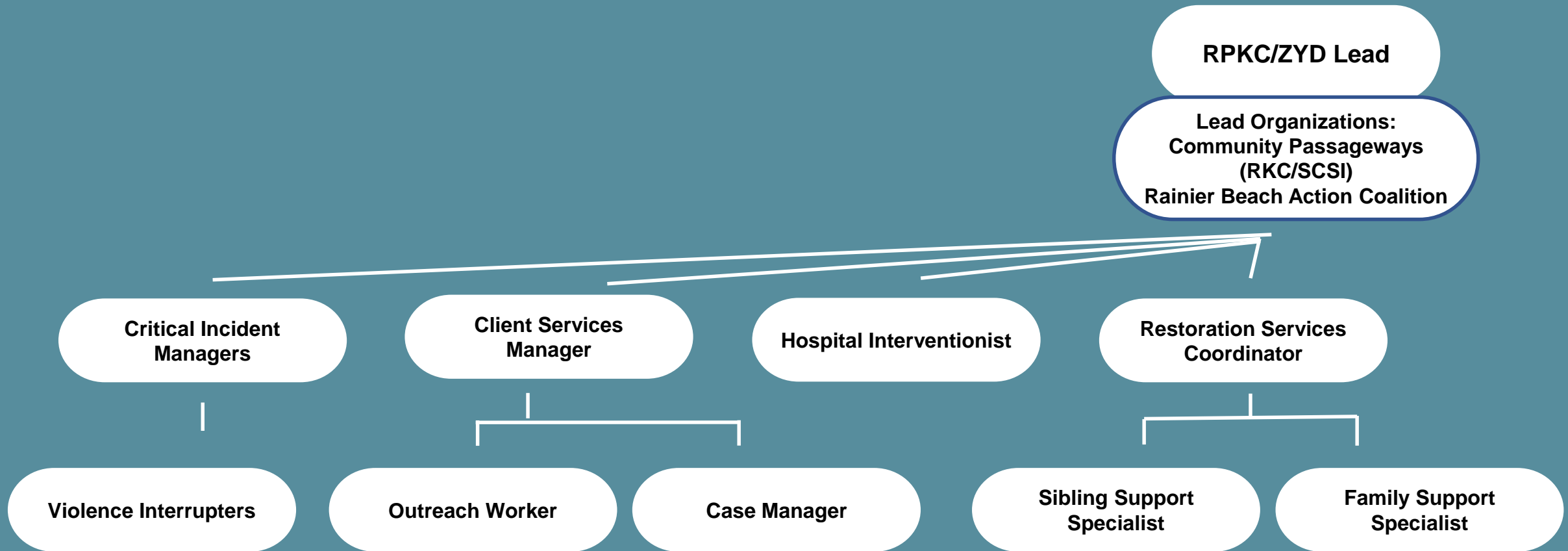
RPKC Strategy



Program Roles



RPKC a Public Health Approach Service Model



Regional Peacekeepers Collective Providers Seattle/South King County Network



Seattle Community Safety Initiative (SCSI)



Rainier Beach Action Coalition (RBAC) Restorative Solutions

