

CoLEAD/JustCARE Outcomes: Conditions for Success and Impact

Lisa Daugaard, Co-Executive Director/Policy

Dr. Cynthia Kotarski, Medical Director/Interim CoLEAD Program Director

Chevonna Gaylor, CoLEAD Clinical Director

Crystal Erickson, CoLEAD Housing Manager



March 1, 2023 | Seattle City Council Public Assets & Homelessness Committee

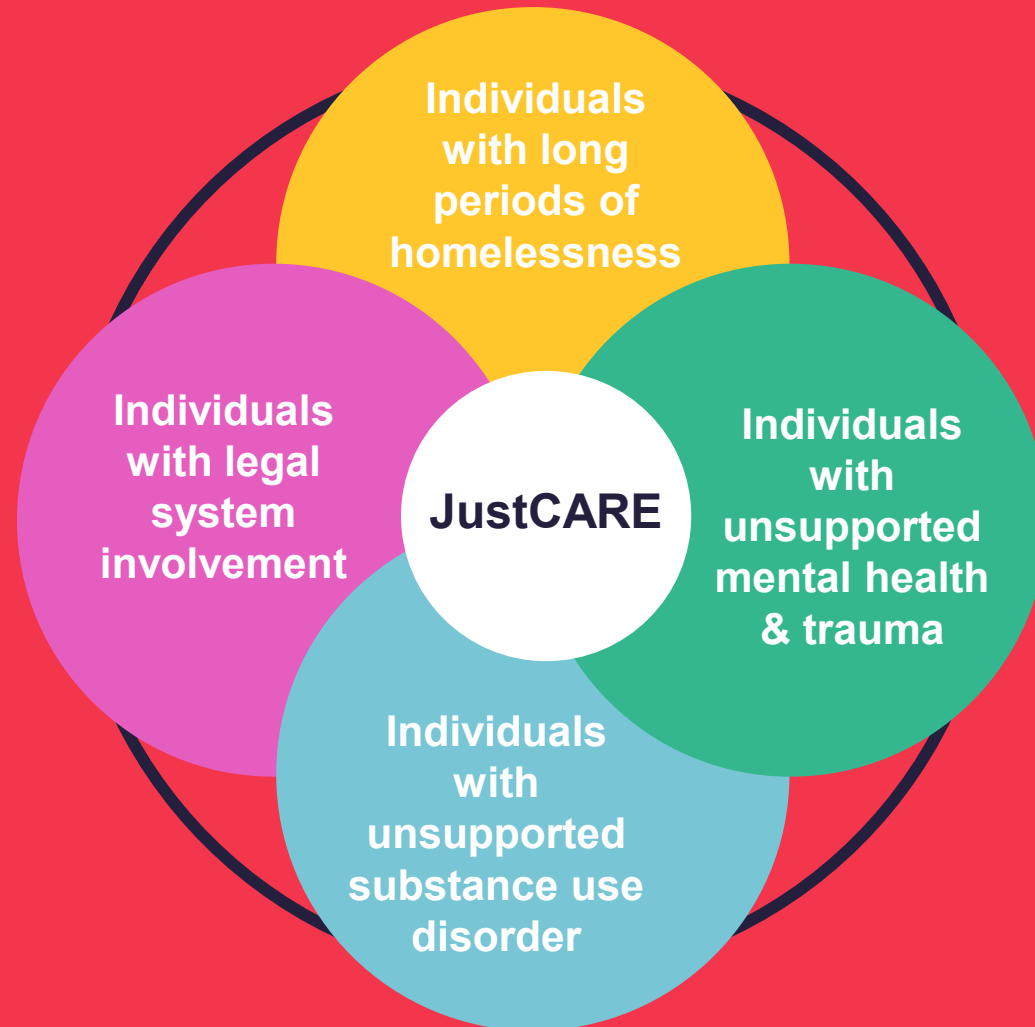
Many Partners: One Goal



When we embrace the values of **care, access to support, & humanity**, a solution - without displacement or enforcement - is celebrated.

JustCARE's Target Population

JustCARE's strength is in supporting the individuals living outside in Downtown Encampments



CoLEAD's Approach

Expertise

Street Outreach Reputation
Community Justice Leaders
Lived Experience
By-Name-List Creation

Clinical Skills

Harm Reduction
Housing First
Trauma-Informed Care
Field-based engagement & coordination

Compassion

Dignity
Accountability
Safety
Respect
Self-Determination

Community Response

Coordination
Collaboration
Organization

Commit

JustCARE commits to Participants:

- 14 Encampment Resolutions in < 2 years
- 500+ Participants Served
- 68% of Participants identify as BIPOC

JustCARE commits to Communities:

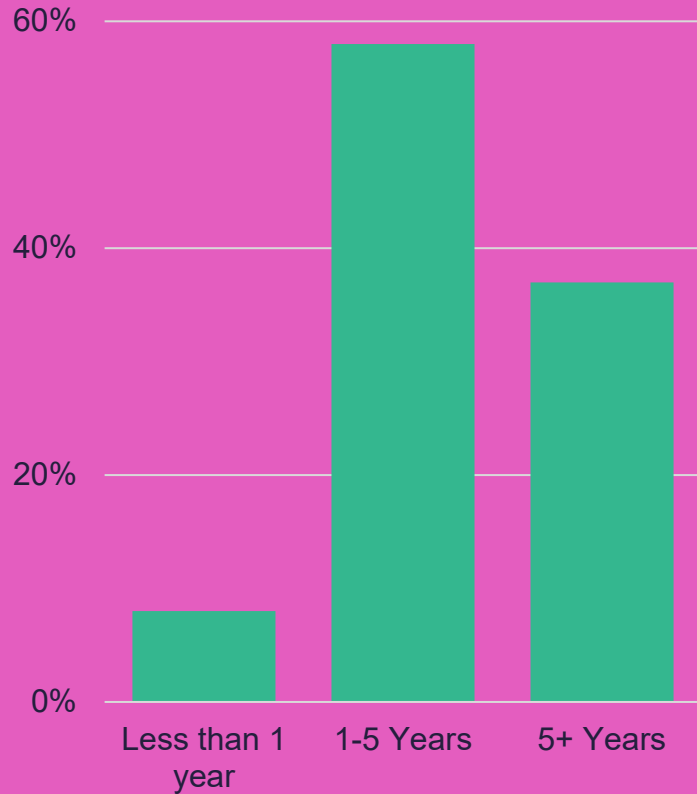
Seattle Neighborhoods:

- Chinatown/International District
 - Pioneer Square
 - Downtown Corridor
- Attending community meetings
 - Responding to stakeholders
 - Addressing individual business concerns
 - Communicating with media



Assess and Understand Unique Needs

Homelessness History



1/3 of Encampment Participants have experienced 5+ years of homelessness

Types of Support Requested



88% of Encampment Participants are seeking support with substance use.

