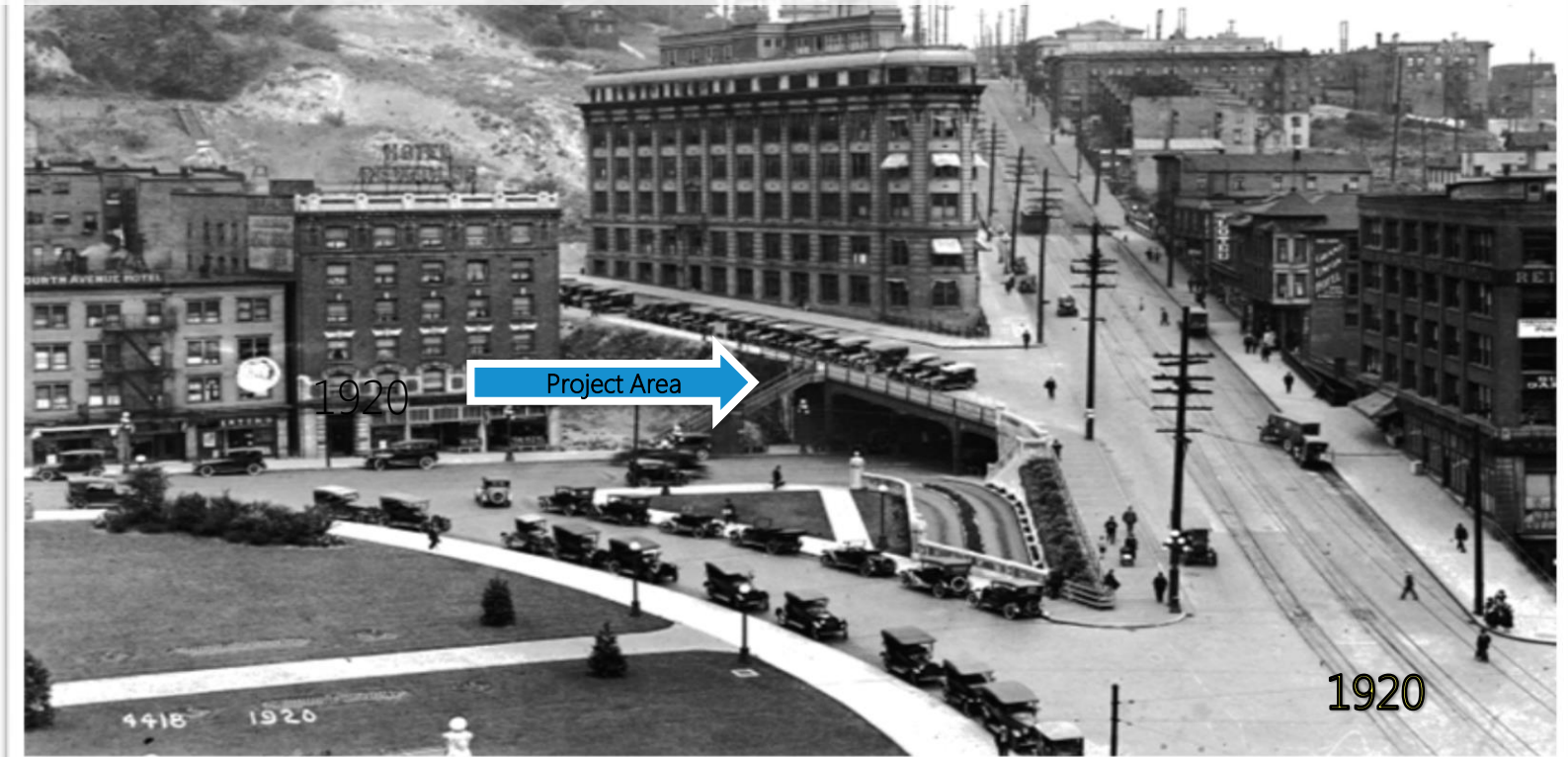


Yesler Bridge Rehabilitation Project Acquisition Ordinance



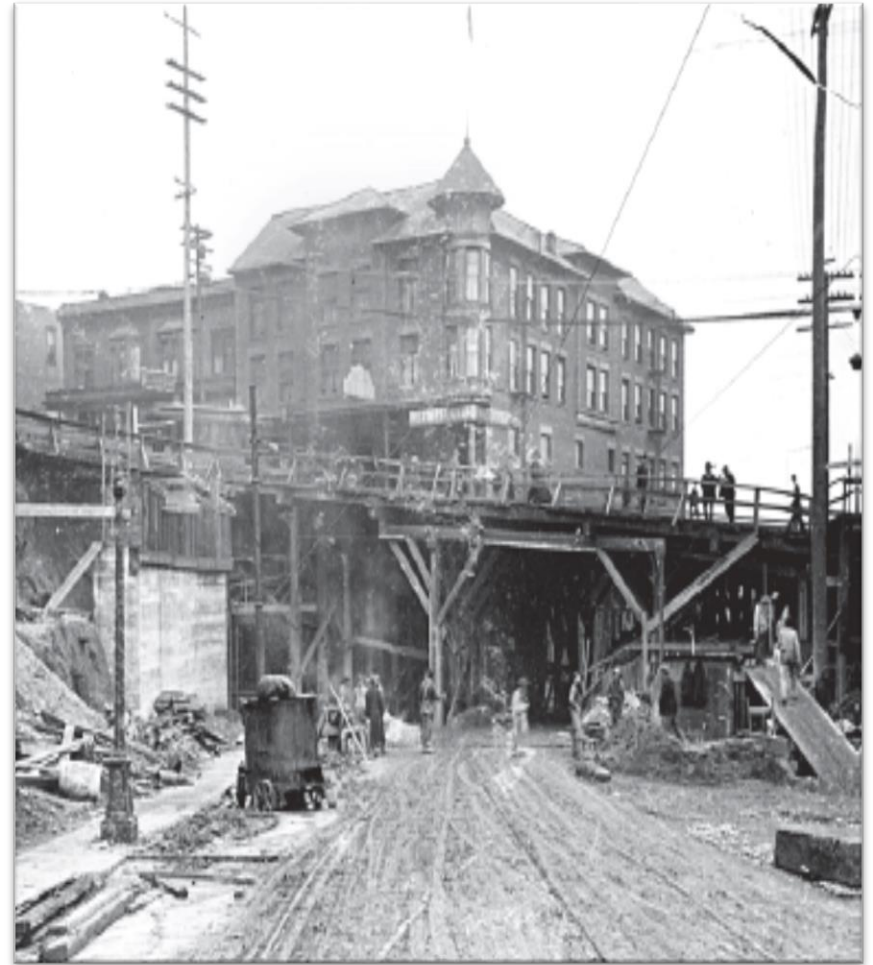
Council Sustainability and Transportation Committee
Larry Huggins, John Buswell, and Lorelei Williams
February 2, 2016

Bridge Rehabilitation

- The two main goals of the bridge rehabilitation project are to structurally strengthen the bridge to improve public safety and preserve the historic characteristics of the bridge.

Background

- Built in 1910
- Over 100 years old
- One of the first permanent steel roadway bridges constructed by the City of Seattle



Existing Condition of Bridge



Current View of Bridge



Project Area

- The bridge is located over 4th Ave S at the intersection of Yesler Way and Terrace St
- It is just a few blocks north of King Street Station in the Pioneer Square Historic District
- Acquisition area is 38 square feet
- Located at the southwesterly corner of 4th Ave S and Yesler Way



Easement

- The easement being accepted in this legislation is necessary for the project to build an abutment wall to support the rehabilitated bridge and all related infrastructure.

Questions?

Larry.Huggins@seattle.gov | (206) 684-5001

John.buswell@seattle.gov | (206) 684-5301

www.seattle.gov/transportation/bike.htm

www.seattle.gov/transportation

