

SPU Drainage and Wastewater Easement Acceptance Ordinance

Seattle City Council
Civil Rights, Utilities, Economic
Development and Arts Committee

June 14, 2016

Seattle
 Public
Utilities

Background

- ❑ Authorizes the partial or full acceptance of 46 utility easements
- ❑ When private property owners develop or improve their property, they may be required to put SPU facilities on their private property. SPU may require that existing facilities be moved
- ❑ To operate SPU facilities such as storm sewers or sewer lines or within private property, the City requires Easements for access, operations and maintenance

Bundling Acceptances

- ❑ Accepts permanent property rights in multiple locations
- ❑ Easements establish SPU's rights to operate City facilities on private property
- ❑ Easements were acquired at no cost to the City
- ❑ Batch ordinance saves time for SPU, the Council and other departments

Easement Locations

- S Morgan St and 30th Alley S
- E Mercer St and 25th Ave E
- S Leschi Pl and Lakeside Ave S
- Meridian Ave N and N 165th St
- SW Jacobsen Rd and SW Hudson St
- S Myrtle Pl and 35th Ave S
- S Myrtle Pl and S Othello St
- NW 68th St and 37th Ave NW
- 39th Ave E and E McGilvra St
- Brygger Dr W and Brygger Alley W
- Maplewood Pl SW and 47th Ave SW(3)
- NE 113th St and Sand Point Way NE
- S Frontenac St and 56th Ave S
- SW 98th St and 17th Ave SW (5)
- SW Oregon St and 23rd Ave SW
- 8th Ave NE and NE Northgate Way (4)
- E Saint Andrews Way and Lexington Way E
- E Spring St and 37th Alley
- Lakeside Ave NE and NE 115th St (2)
- Stone Ave N and N 135th St
- 15th Ave NE and NE 130th Pl
- 2nd Ave NW and NW Canal St
- E Laurelhurst Dr NE and NE 35th St
- 40th Av SW and SW Edmunds St
- Bonair Pl SW and 53rd Ave SW
- 8th Ave NW and NW 108th St
- NW 98th St and Marmount Dr NW
- S Shell St and 45th Ave S
- Beacon Ave S and S Fletcher St
- S Fletcher St and 45th Ave S
- S Massachusetts St and Airport Way S
- SW Kenyon St and 26th Ave SW
- 16th Ave S and S Atlantic St

Easement Locations



S Morgan St and 30th Alley S



E Mercer St and 25th Ave E



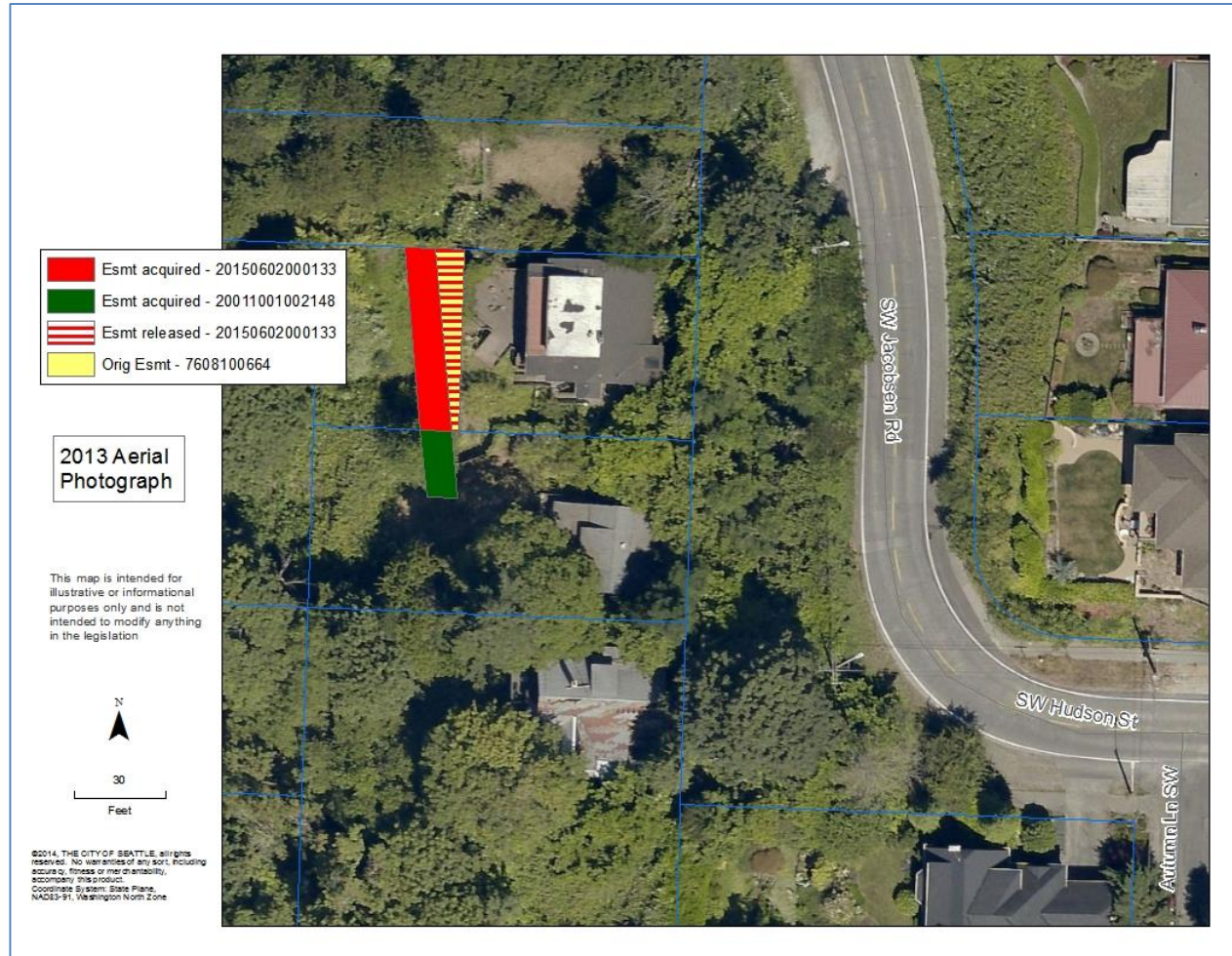
S Leschi Pl and Lakeside Ave S



Meridian Ave N and N 165th St



SW Jacobsen Rd and SW Hudson St E



S Myrtle Pl and 35th Ave S/S Myrtle Pl and S Othello St



NW 68th St and 37th Ave NW



39th Ave E and E McGilvra St



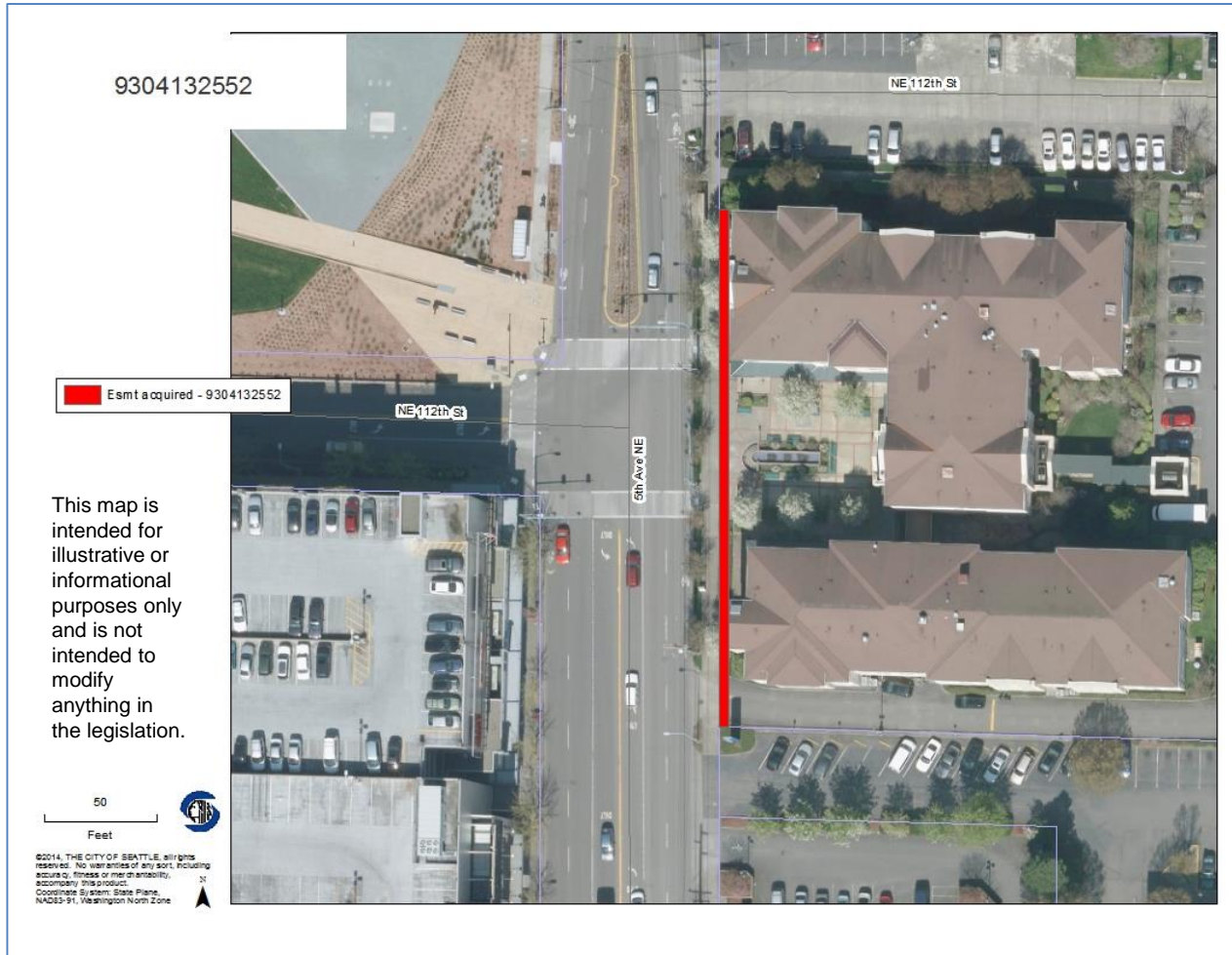
Brygger Dr W and Brygger Alley W



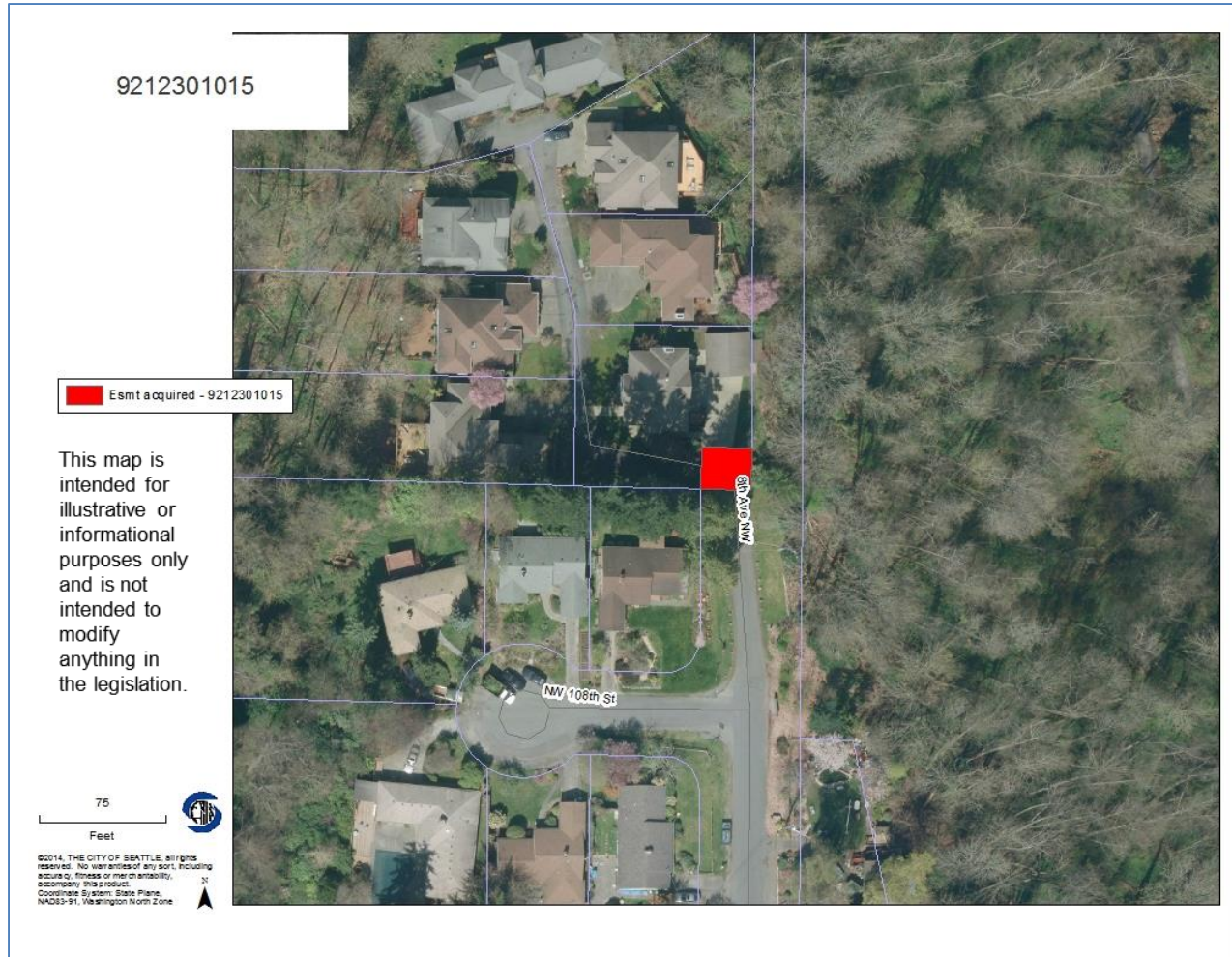
Maplewood Pl SW and 47th Ave SW



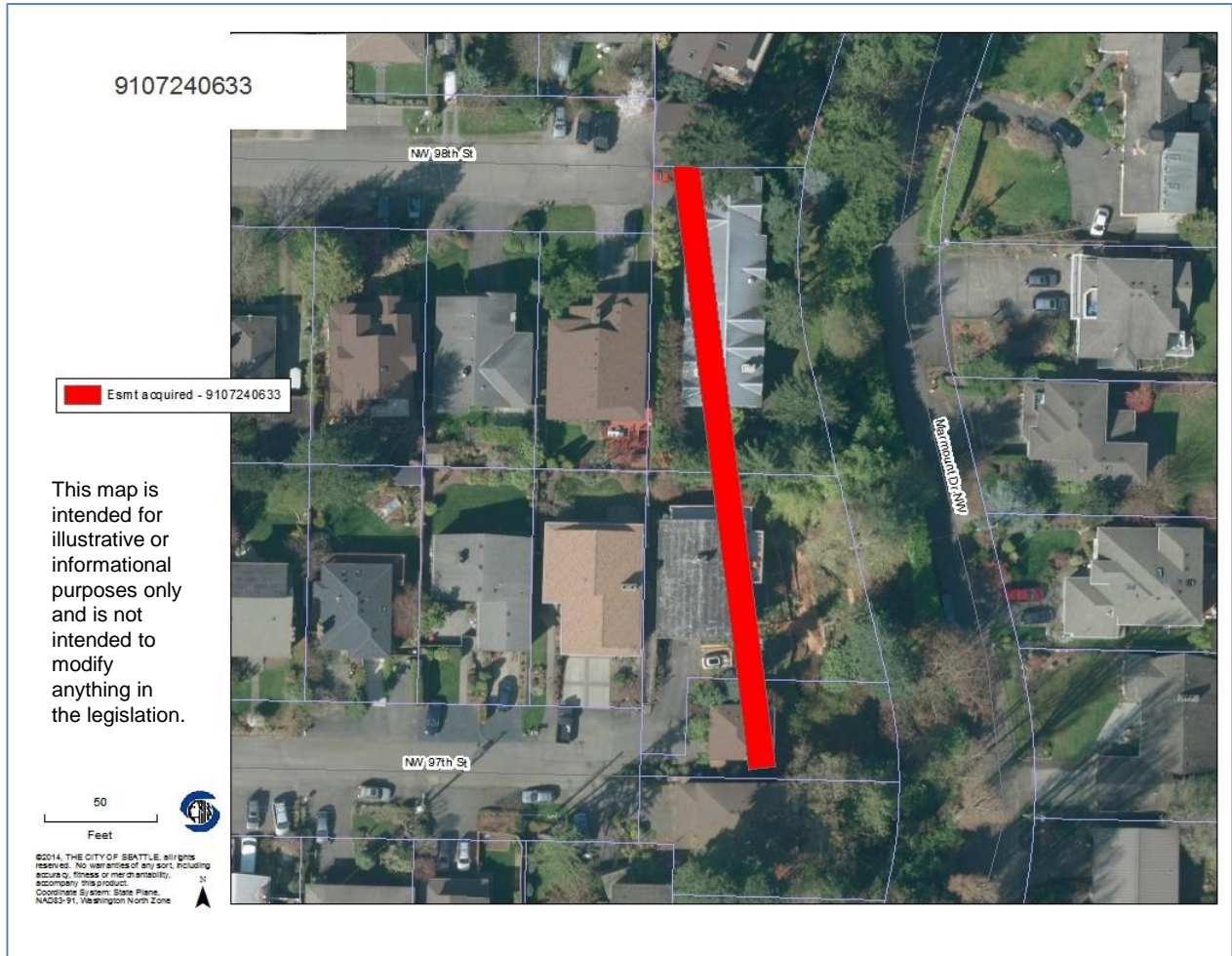
NE 112th St and 5th Ave NE



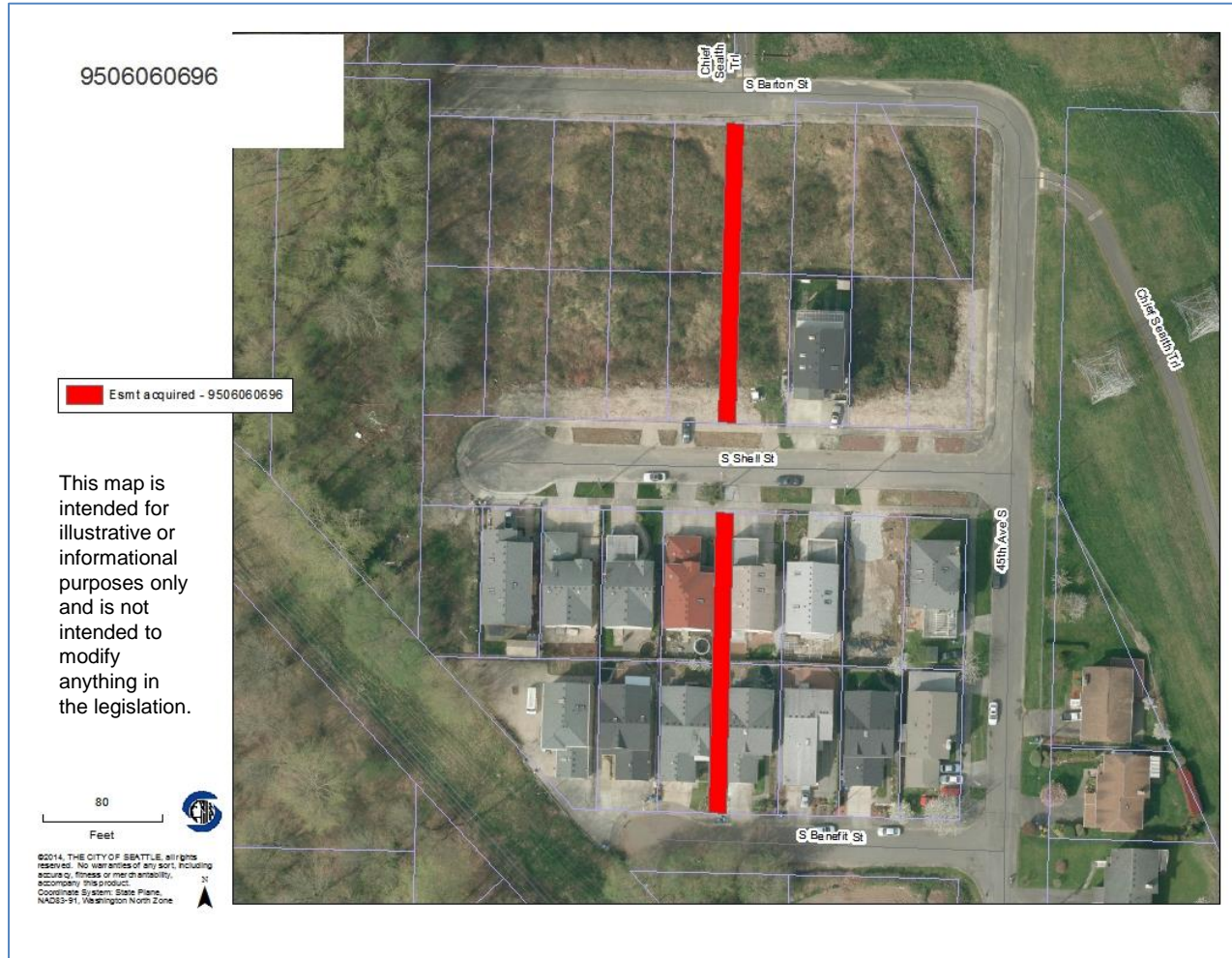
8th Ave NW and NW 108th St



NW 98th St and Marmount Dr NW



S Shell St and 45th Ave S



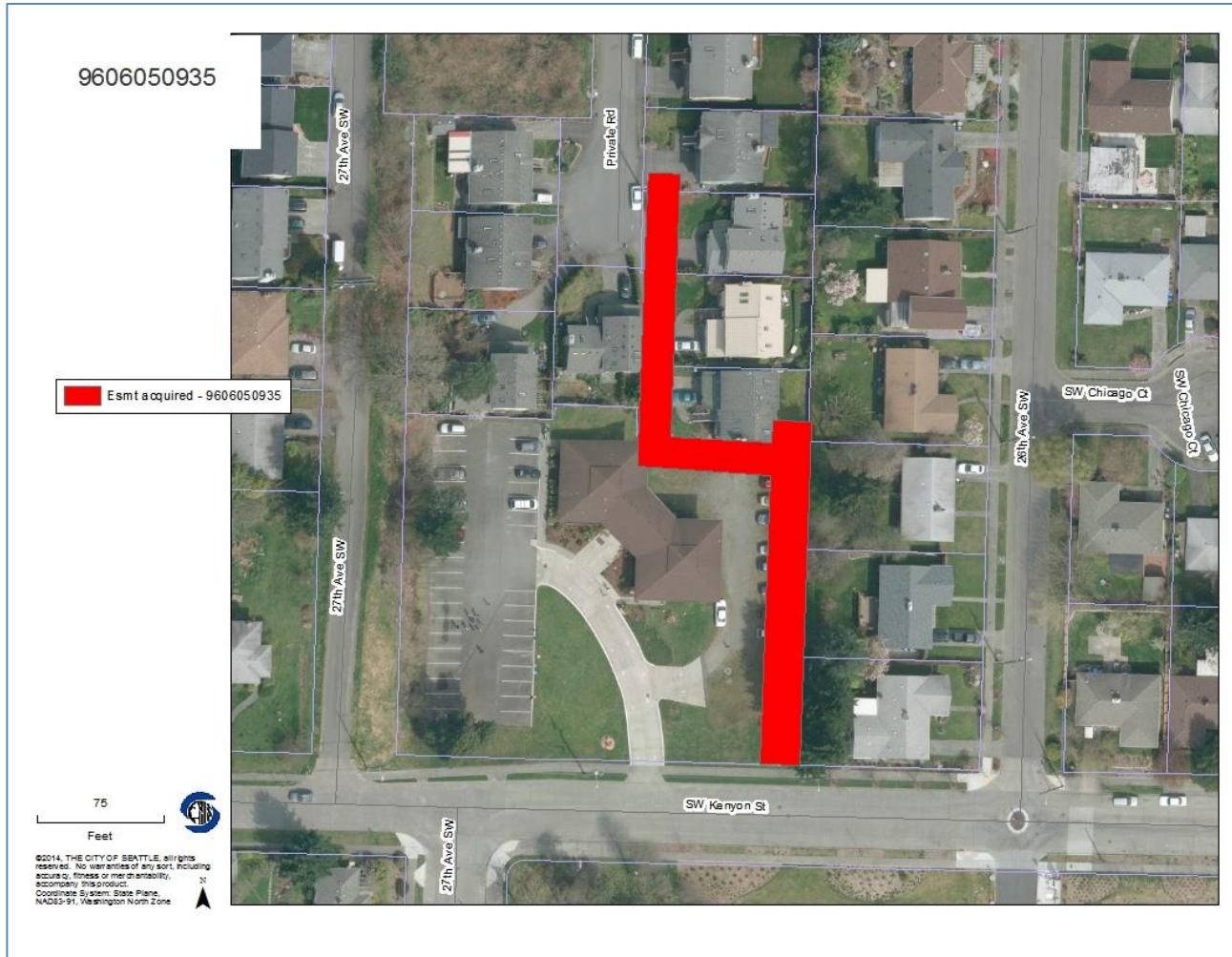
Beacon Ave S and S Fletcher St



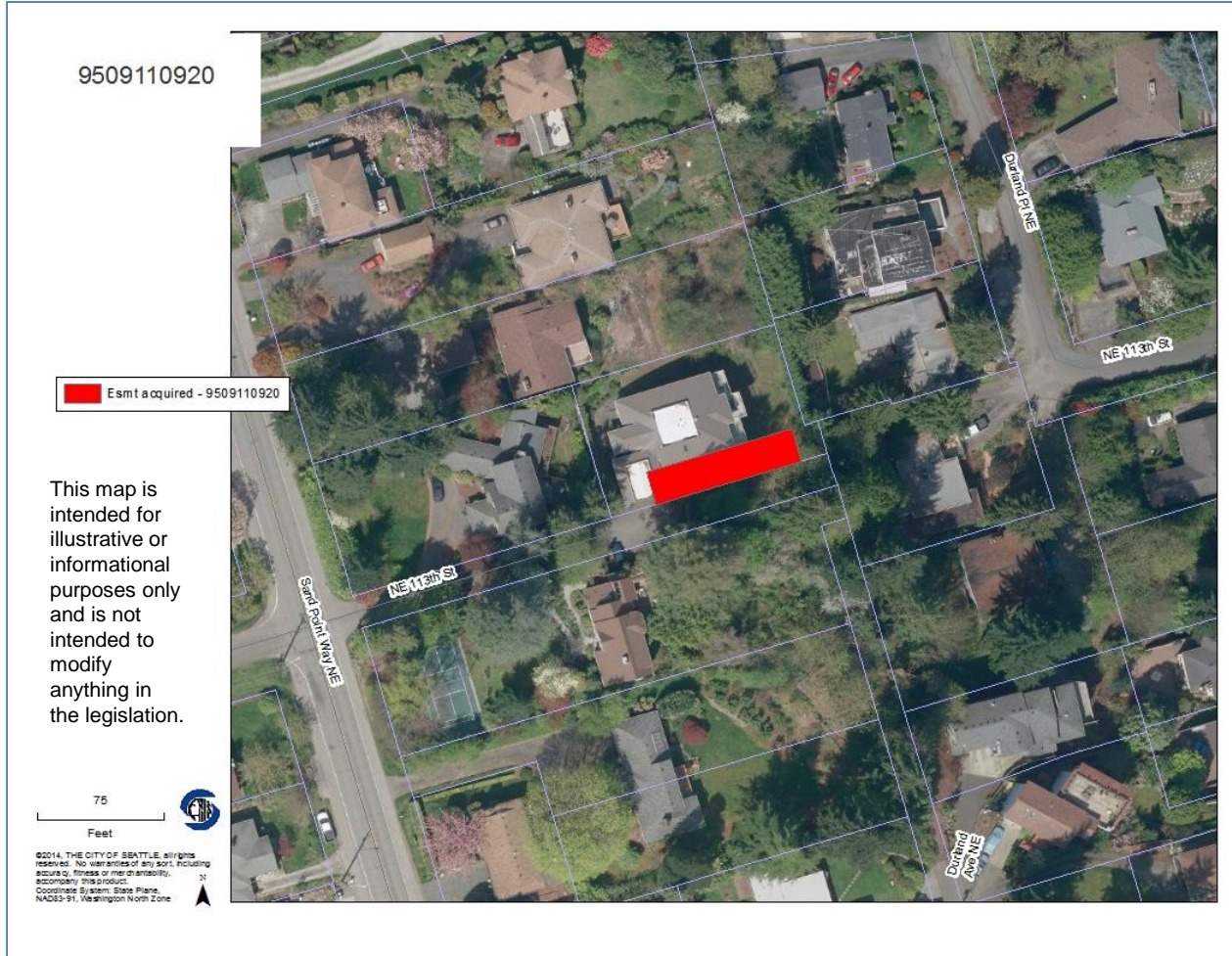
S Massachusetts St and Airport Way S



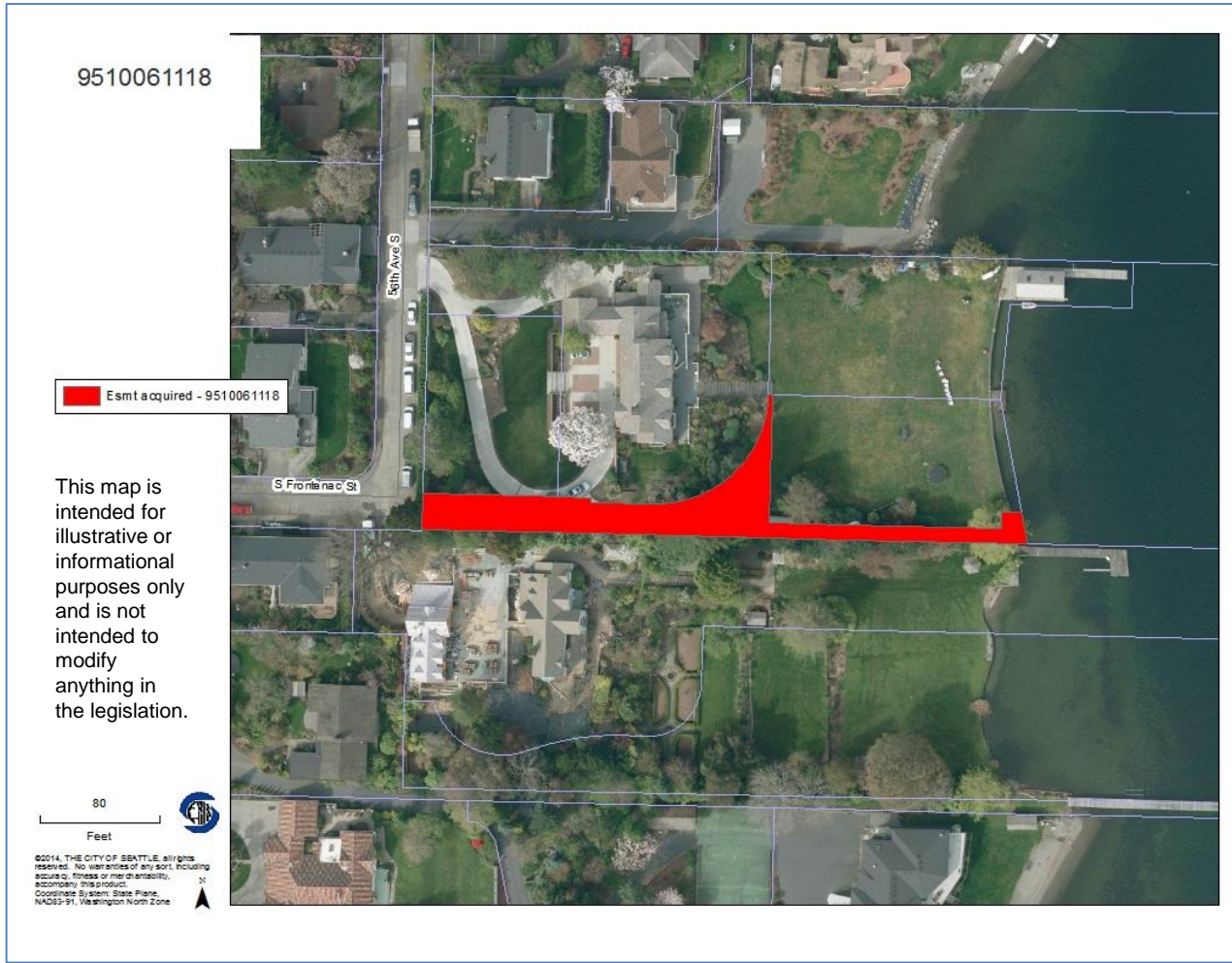
SW Kenyon St and 26th Ave SW



NE 113th St and Sand Point Way NE



S Frontenac St and 56th Ave S



SW 98th St and 17th Ave SW



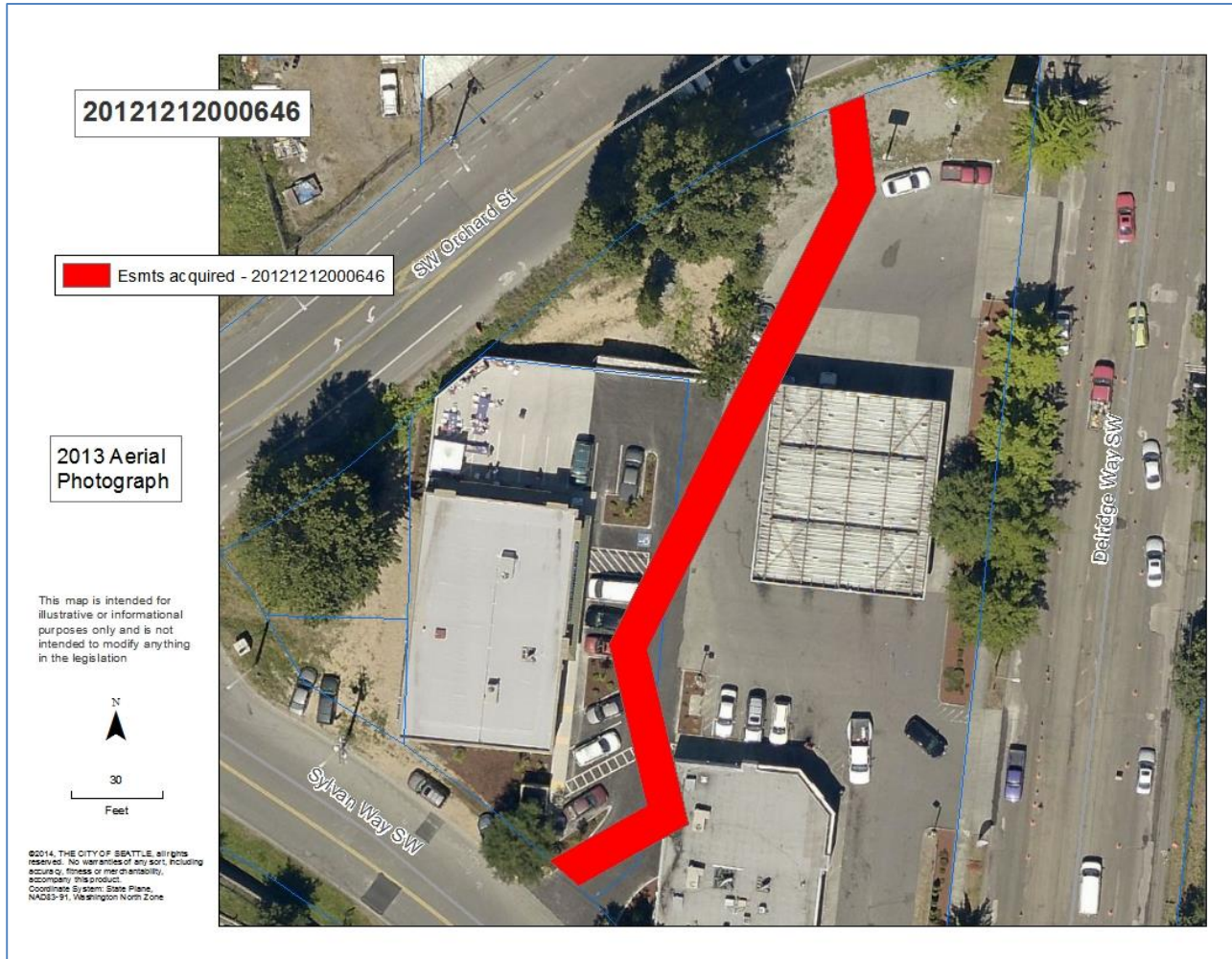
SW Oregon St and 23rd Ave SW



8th Ave NE and NE Northgate Way



SW Orchard St and Sylvan Way SW



E Laurelhurst Dr NE and NE 35th St



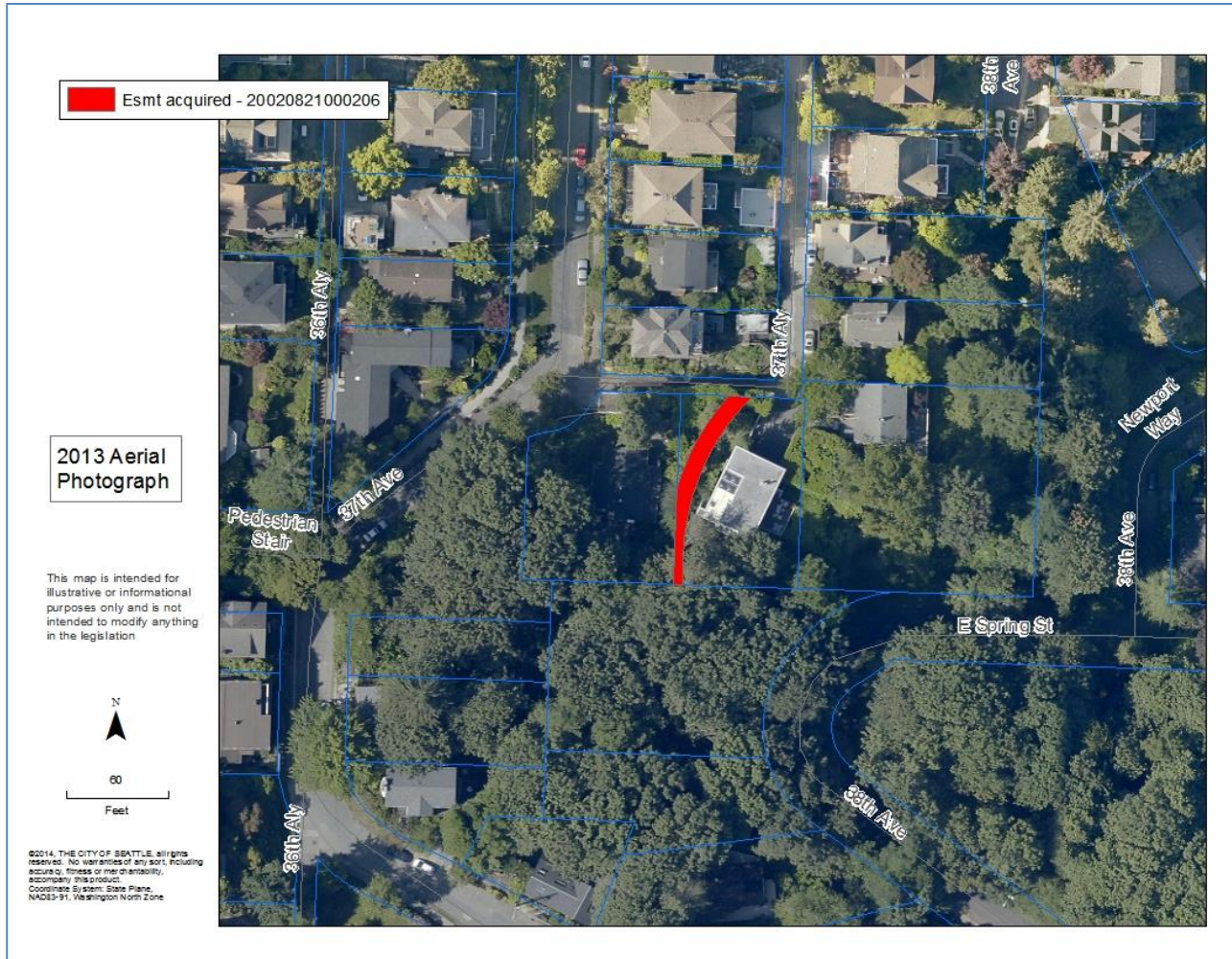
40th Ave SW and SW Edmunds St



Bonair Place SW and 53rd Ave SW



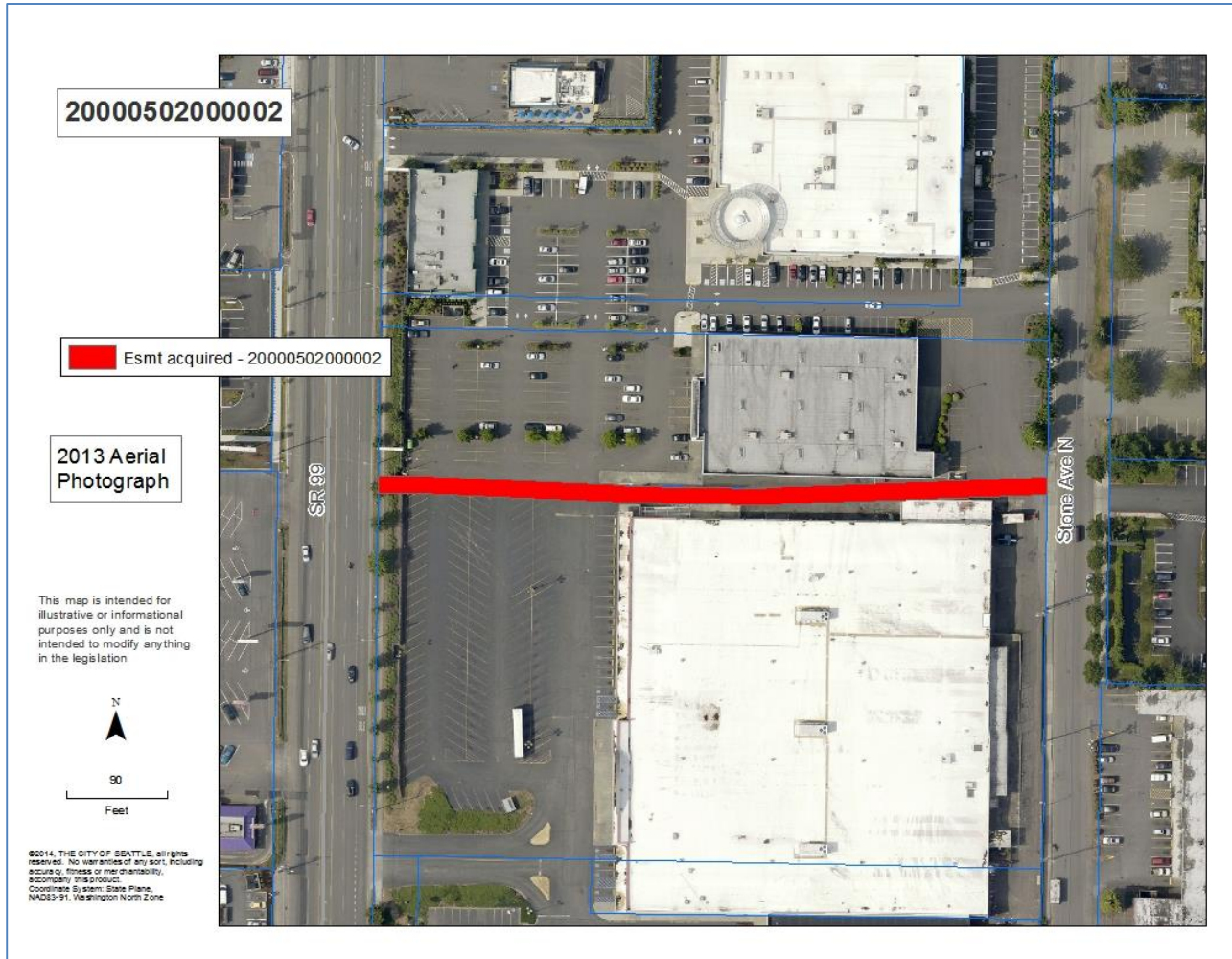
E Spring St & 37th Alley



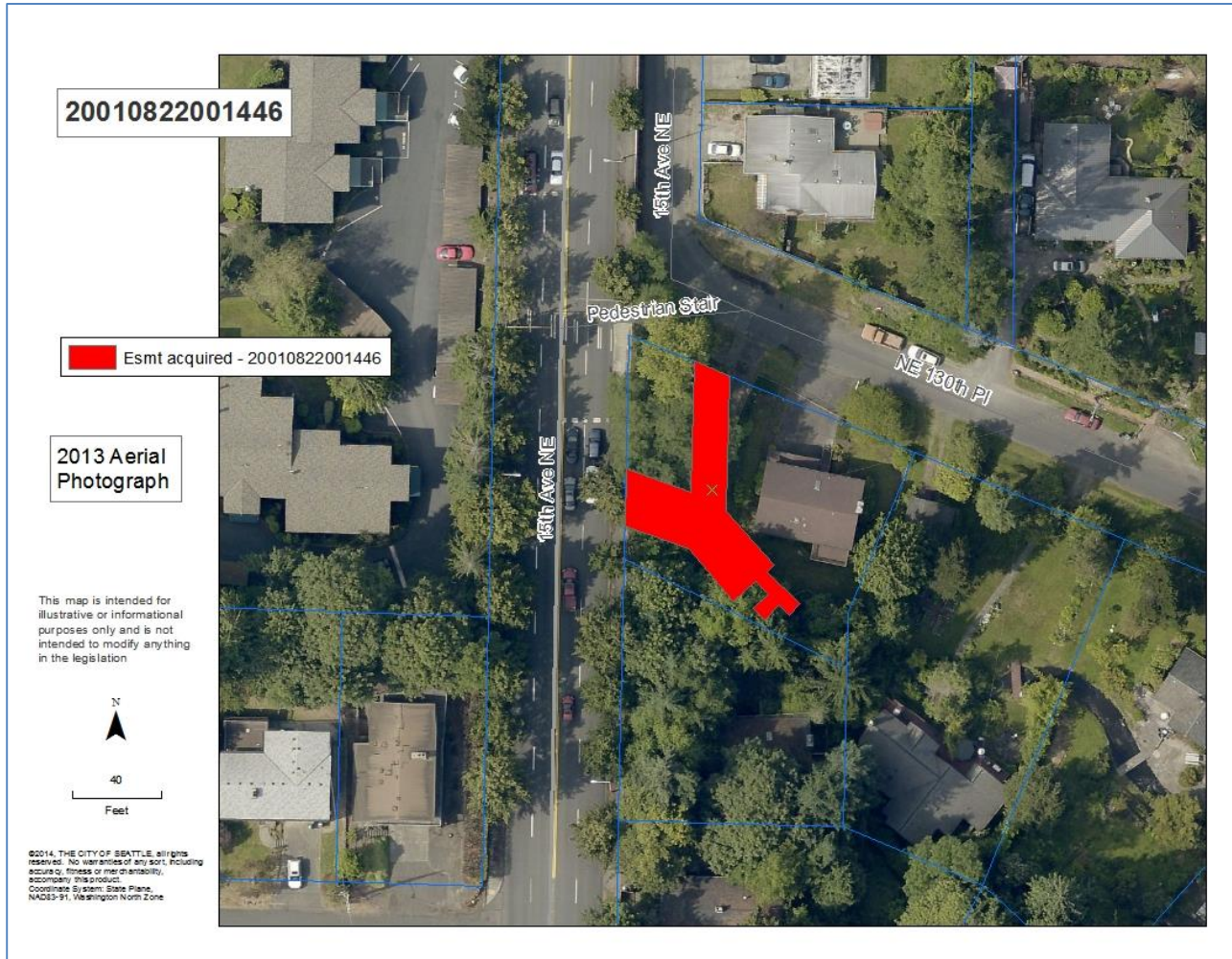
Lakeside Ave NE and NE 115th St



Stone Ave N and N 135th St



15th Ave NE and NE 130th Pl



2nd Ave NW and NW Canal St

