

# Next Generation Intelligent Transportation Systems Project Acquisition Ordinance



Council Sustainability and Transportation Committee

Sam Spencer and Lorelei Williams

July 19, 2016

# Background

## The Next Generation Intelligent Transportation System is designed to:

- Upgrade City's Transportation Operations Center
- Use current electronic and communication technologies
- Provide real-time information to support traffic flow, major construction projects, incidents



# Background

Dynamic Message Signs (DMS Sign) will be deployed at key decision points to provide real time information as part of the Next Generation Transportation System

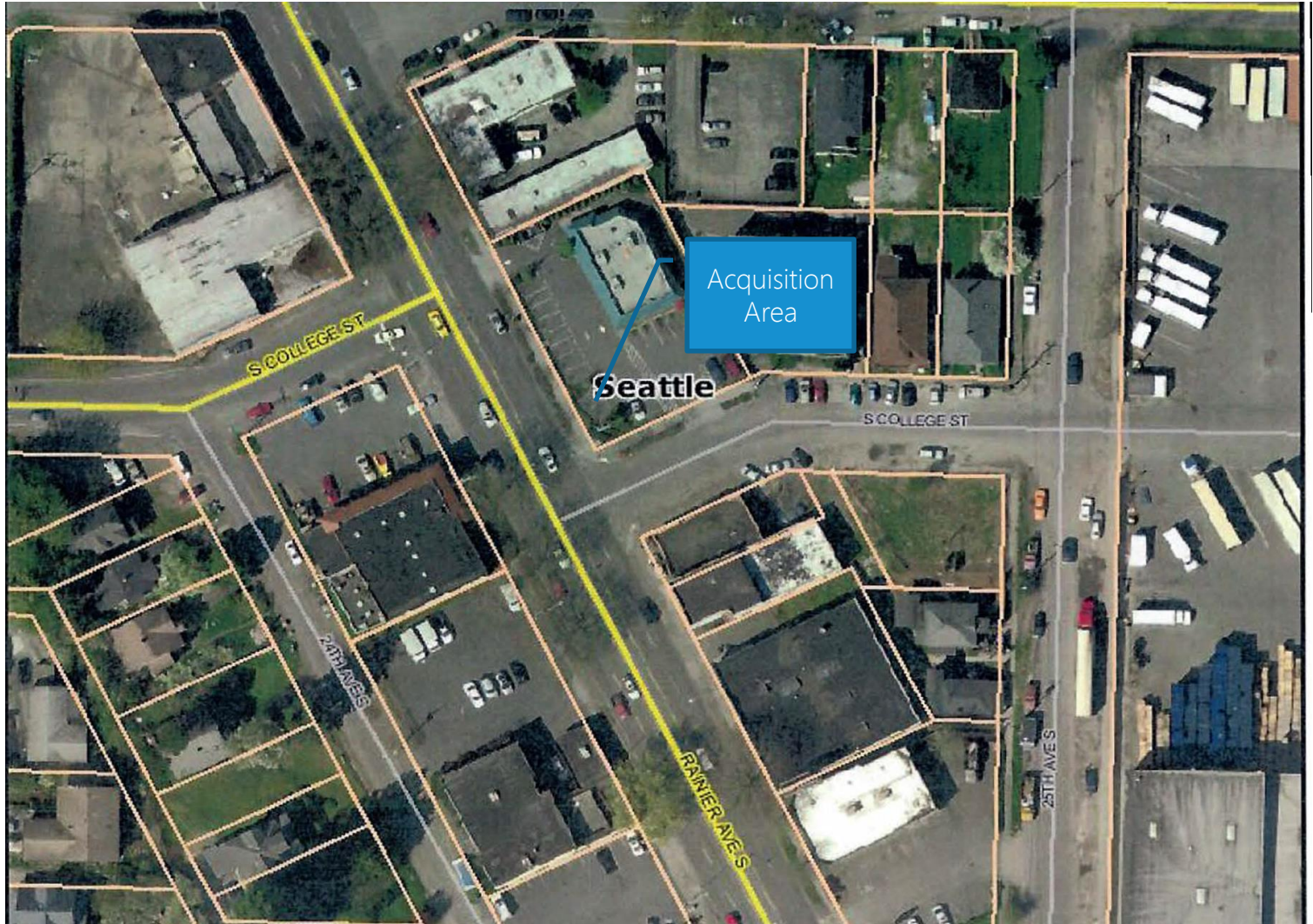


A DMS Sign will be constructed approximately 50 feet North of the NE corner of Rainier Ave S and S College St



Property acquisition needed to install and maintain DMS Sign at this location

# Area map



# Questions?

Sam.spencer@seattle.gov | (206) 684-5150

[www.seattle.gov/transportation](http://www.seattle.gov/transportation)

