

A photograph of the Seattle skyline at sunset, with the city lights and the Space Needle visible against a colorful sky. The water of the harbor is in the foreground.

Managing Growth to Become an Equitable City 2015-2035

A circular logo with a dark red background. The word "Seattle" is written in a white, cursive font above a horizontal line, and the year "2035" is written in a white, sans-serif font below the line.

Seattle
2035

Mayor's Recommended Plan
Environment, Utilities and
Capital Facilities

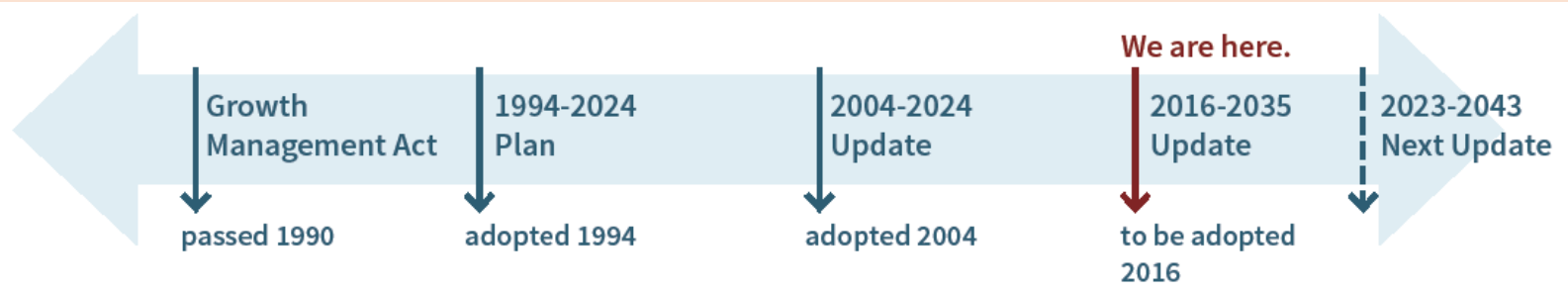
Council Review of Plan

Comp Plan Topic	Council Committee	Date
Community Outreach	PLUZ	April 17
Equity & Equitable Development	PLUZ	May 3
Overview	PLUZ	May 17
Growth Strategy and Land Use	PLUZ	June 7
Transportation	Sustainability and Transportation	June 21
Public Hearing	PLUZ	June 27
Housing Neighborhood Planning	Affordable Housing, Neighborhoods and Finance	July 6
Growth Strategy	PLUZ	July 8
Economic Development Arts & Culture	Civil Rights, Utilities, Economic Development & Arts	July 12
Community Well-Being	Human Services and Public Health	July 13
Schools and Growth	Education, Equity and Governance	July 20
Parks, Open Space and Recreation	Parks	July 21
Environment, Utilities and Capital Facilities	Energy and Environment	July 26



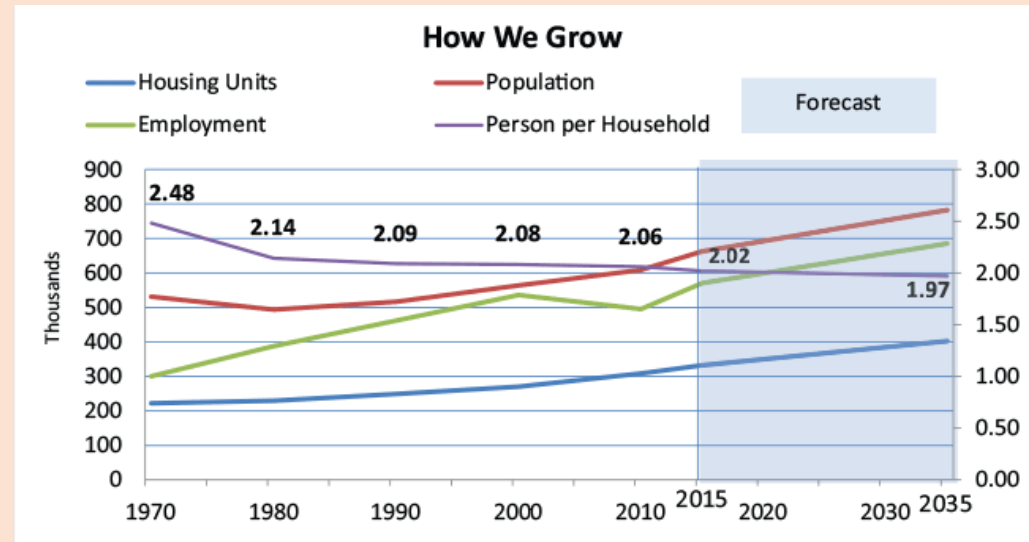
Planning Context

- Vision for how we will manage growth over the next 20 years
- Comp Plan is policy document
- Growth Projections
- Urban Village Strategy



Changes in Seattle since the last major update

- Added 51,000 housing units and 58,000 jobs since 2004
- Expanded transit (light rail and more bus hours)
- “Shared” economy
- City’s commitment to be carbon neutral
- Updated Vision 2040 and Countywide Planning Policies
- New growth assumptions
- Affordable housing crisis
- City’s increased emphasis on race and social equity



What's in the Plan

Growth Strategy

(previously Urban Village)

Land Use

Transportation

Housing

Capital Facilities

Utilities

Economic Development

Environment

Parks and Open Space

Arts and Culture

(previously Cultural Resources)

Community Well-Being

(previously Human Development)

Neighborhood Planning

(previously Neighborhood Planning A)

Container Port

(no changes)

Shoreline Areas

(no changes)

Neighborhood Plans

(previously Neighborhood Planning B, no changes)

What we Heard

Environment

- Impact of growth/ higher density on tree cover, stormwater, etc.
- Draft Plan is not sufficient to become carbon neutral by 2050.

Infrastructure

- Infrastructure for growing areas as well as concern about whether planned investments will be sufficient.
- Desire for analysis and planned improvements for specific neighborhoods
- More info on climate change effects on water supply.

Sustainability

- Make sustainability more prominent in Plan
- Encourage ecodistricts to achieve sustainability and resource efficiency at a district scale

Capital Facilities Element

Strategic Investment

- Priority: maintain existing facilities
- Model environmental, economic and social stewardship
- Family-friendly facilities
- Adaptive reuse of historic facilities
- Resilient facilities
- User fees and scholarships to mitigate cost burden on low-income households
- Invest so libraries remain free

Facility Operations and Management

- Efficient use of limited resources
- Manage facilities with resource conservation approach
- Aim for 20% less energy use in 2020 than in 2008
- Healthy environment for occupants and users

Capital Facilities Element

Facility Siting

- Priority locations in urban centers and villages
- Equitable distribution of services
- Avoid sites vulnerable to natural or man-made hazards
- Joint use, reuse and repurposing of existing City assets
- Alternative service delivery models

Capital Facilities Element

Facility Design and Construction

- Universal accessibility
- Energy, water efficiency
- Minimize waste
- Healthy indoor and outdoor environments
- Promote active living
- More transportation options
- Account for future climate conditions

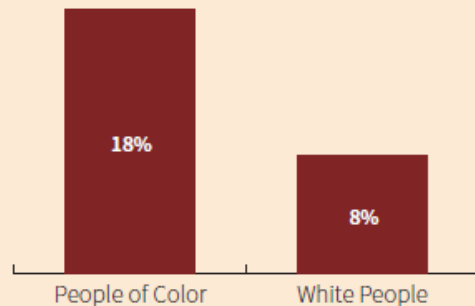
Capital Facilities Element

Non-City Service Providers

- Collaborate with public and non-profits to locate community-based facilities, possible co-location, joint use
- Partner with Seattle Public Schools to plan for expected growth
- Join with other jurisdictions to explore regional funding strategies for capital facilities that benefit the region
- Nontraditional strategies – leasing, funding non-city facilities

Capital Facilities Element Equity

Percentages of Survey Respondents in Each Group Who Visit a Community Center on a Weekly Basis



Source: September 2014 Parks Legacy Plan survey.

- CF1.8 Leverage investments to create training and living wage job opportunities, particularly for marginalized populations and local residents.
- CF3.2 Encourage the location of new capital facilities where they would support equitable distribution of services and proactively address the needs of marginalized communities.
- CF4.1 Seek to make all capital facilities accessible and relevant to people of all abilities, socioeconomic backgrounds, ages and cultures.

Environment Element

Land

- Sustainable mix of tree species and ages cared for by City and Seattleites
- 30% tree canopy by 2037 and 40% over time
- Trees and vegetation for green stormwater infrastructure
- Increase permeable surface
- Sustainable management of public and private open space
- Sustainably manage 700 million gallons of stormwater
- Encourage gardening and food production

Environment Element

Water

- Use best management practices to protect and improve water quality
- Reduce combined sewer overflows
- Clean up contaminated sediment
- Limit use of chemicals on City-owned property

Environment Element

Climate

- Low or zero emissions transportation options
- Concentrate homes and businesses where people can walk to recreation and services
- Encourage less driving
- Reduce waste produced and increase recycling
- Encourage local food and healthy foods with low carbon footprint
- Prepare for climate change when planning infrastructure

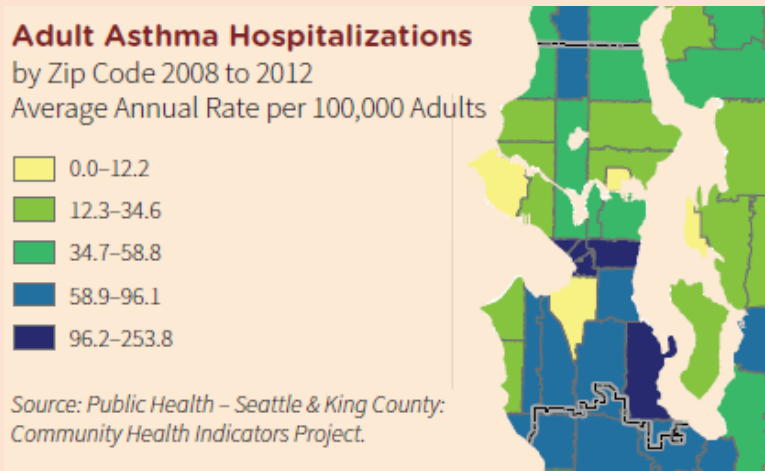
Environment Element

Environmental Justice

- Consider cost and benefits on different communities
- Address disparities in the distribution of environmental burdens and benefits
- Prioritize strategies that have co-benefits supporting equity
- Assess impacts on marginalized populations and identify ways to mitigate

Environment Element

Equity



EN4.2 Prioritize actions that reduce risk and enhance resilience in populations nearest the likely impacts of climate change, including especially marginalized populations and seniors...

EN5.2 Prioritize investments, policies, and programs that address existing disparities in the distribution of environmental burdens and benefits.

EN5.4 Assess facilities and services periodically to determine the environmental impacts they may be having on marginalized populations, and identify ways to mitigate those impacts.

Utilities Element

Service Delivery

- Equitable level-of-service
- Coordinate projects to limit construction and operational impacts
- Resilient utility system
- Ensure private development maintains utility standards
- Affordable utilities services through discounts and incentives
- Renew and replace utility infrastructure

Utilities Element

Utilities Resource Management

- Use demand management to meet utility needs of wholesale customers
- Consider environmental and social impacts of using natural resources
- Remain carbon neutral in generating electricity
- Strive to be carbon neutral in the delivery of water, drainage, sewer and solid waste services
- Divert solid waste away from land fills- reduce, recycle, reuse, repair
- Prevent pollution from damaging aquatic systems

Utilities Element

Utility Facility Siting and Design

- Consider maintenance and operating costs of new facilities
- Design to minimize environmental impacts on already burdened communities
- Co-locate facilities
- Consider future climate conditions and impacts on communities of color, low-income communities

Utilities Element

Coordination within the Right-of-Way

- Early coordination and collaboration on transportation and utility projects in right-of-way
- Coordinate construction to limit cost and impacts on community

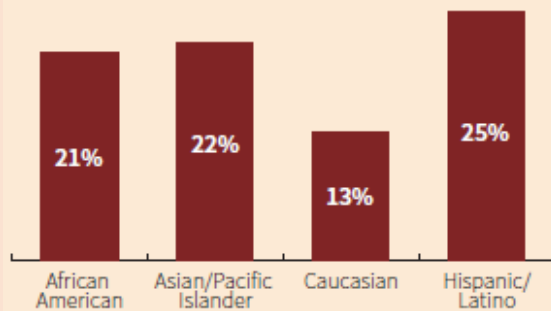
Utilities Element

Non-City Utilities

- Provide notice of work in right-of-way
- Equitable access to right-of-way for private providers
- Encourage providers to deliver:
 - universal access,
 - customer options,
 - competitive pricing,
 - privacy,
 - security,
 - reliability,
 - state-of-art services

Utilities Element Equity

Percentage of Seattle Households without Internet Access at Home



Source: Community Technology Survey 2015

U1.1 Provide equitable levels of service by accounting for existing community conditions, considering how decisions will impact varied geographic and socioeconomic groups, and making service equity a criterion in decision-making.

U1.6 Make utility services as affordable as possible through equitable delivery of utility discount programs and incentives that reduce utility use.

U3.7 Consider the disproportionate impacts of climate change on communities of color and lower-income communities when prioritizing projects.

Questions?

Tom.Hauger@seattle.gov | (206) 684-8380

Patrice.Carroll@seattle.gov | (206) 684-0946

<http://2035.seattle.gov>