

A scenic view of a river flowing through a lush green forest. The river is the central focus, with a rocky bar in the middle. The surrounding forest is dense and vibrant green. In the background, there are mountains under a clear blue sky with a few small clouds. The overall atmosphere is peaceful and natural.

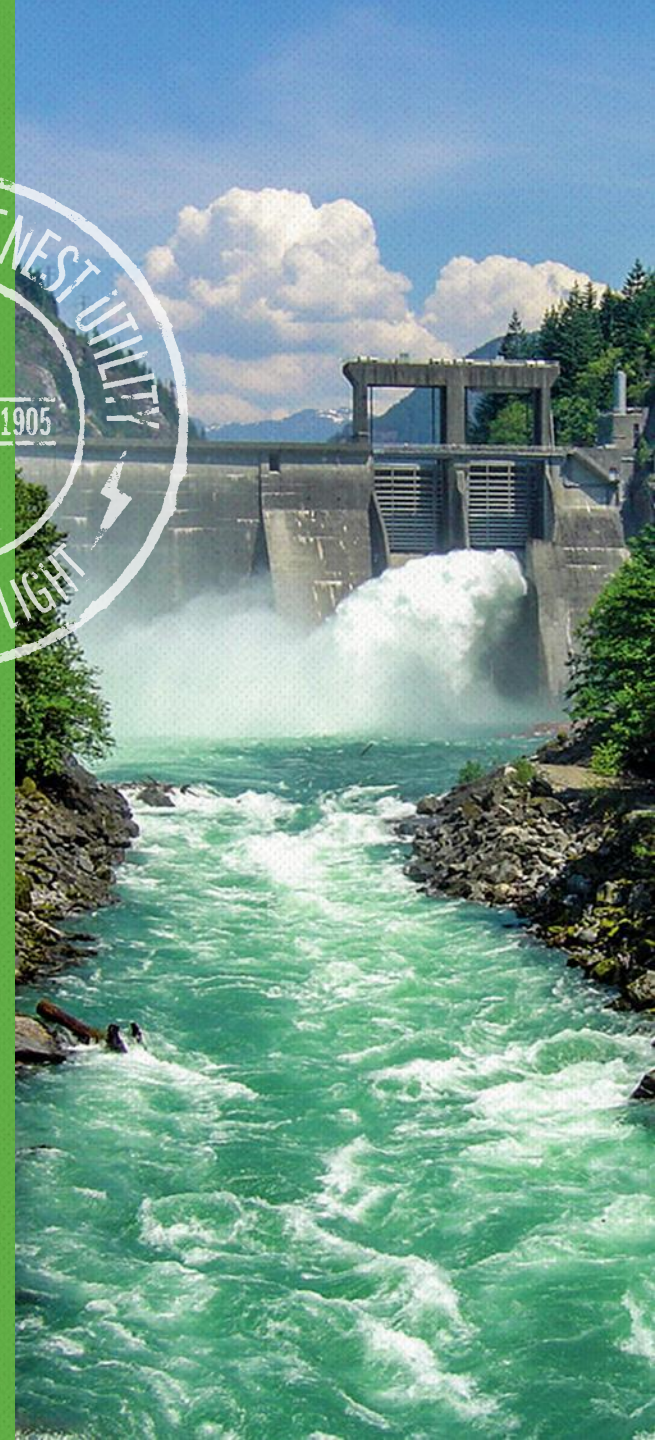
SEATTLE CITY LIGHT HABITAT LAND ACQUISITIONS

Kate Engel, Science Policy Manager

Denise Krownbell, ESA Early Action
Program Manager

PRESENTATION OVERVIEW

- ESA Early Action Program
- Skagit Wildlife Mitigation Lands Program
- 2016 Deed Acceptance Ordinance
- Acquired Lands Photo Tour
- Questions



ESA EARLY ACTION PROGRAM

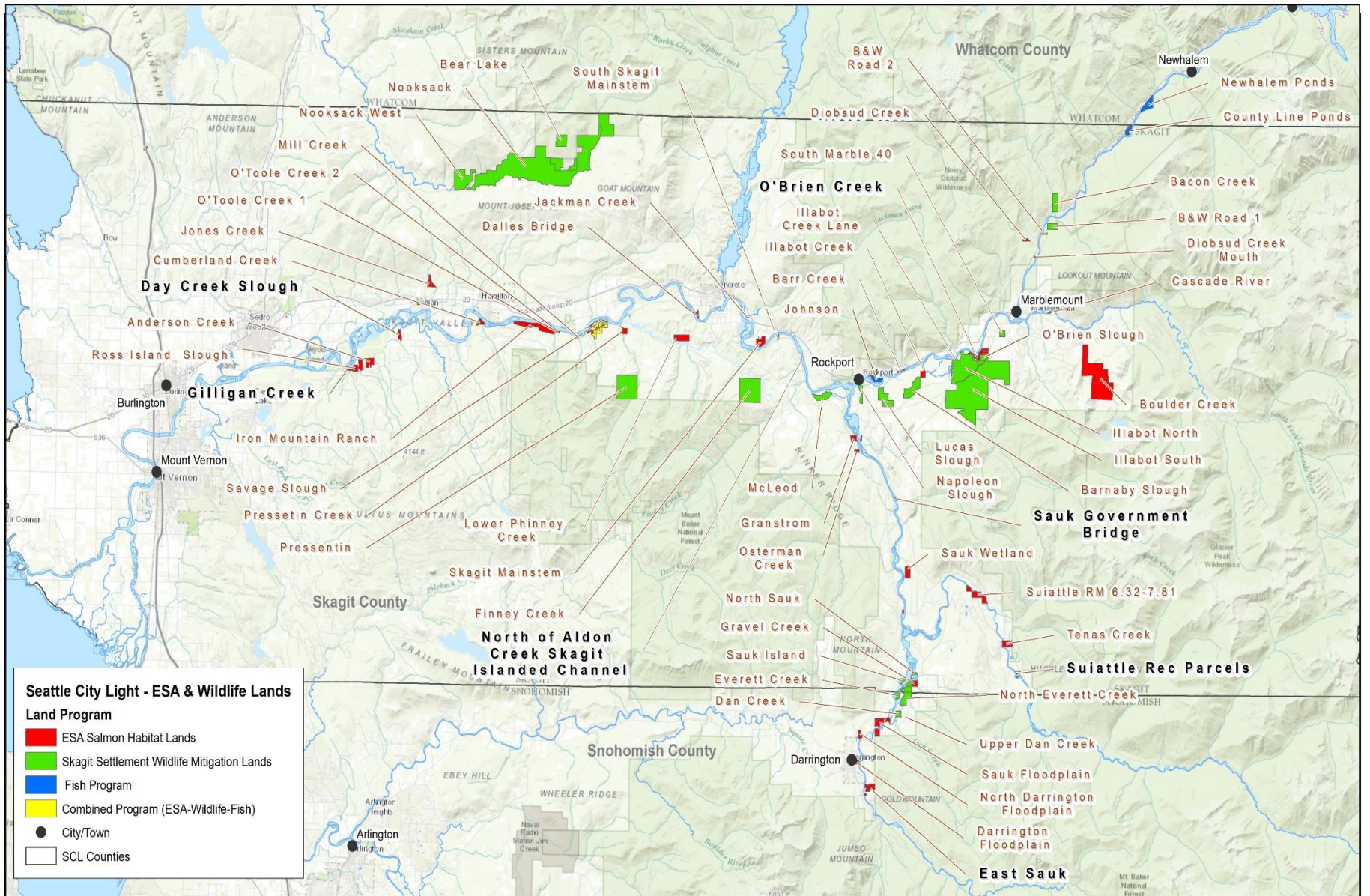
- Began in 2000 with the ESA listing of Chinook salmon and bull trout.
- Focus on fish habitat in the Skagit and Tolt watersheds.
- Part of the mitigation for the ESA Incidental Take Statement for the Skagit License.
- 3,285 acres purchased and protected thus far.
- Funded by \$4.9M SCL and \$4.4M grant dollars.

SKAGIT WILDLIFE MITIGATION LANDS PROGRAM

- Started in 1990.
- Required by Skagit FERC License and Wildlife Settlement Agreement.
- Over 10,476 acres purchased, protected, and managed for wildlife.
- Recent focus on work with the three Skagit tribes to enhance elk habitat and restore riparian land.

2016 ESA LANDS DEED ACCEPTANCE ORDINANCE

- Includes purchase of 13 properties totaling 207 acres in Skagit and Tolt watersheds in 2015.
 - 53 acres in the Skagit
 - 154 acres in the Tolt
- Funded by \$ 500,000 SCL and \$170,000 grant dollars.



Seattle City Light - ESA & Wildlife Lands

Land Program

- ESA Salmon Habitat Lands
- Skagit Settlement Wildlife Mitigation Lands
- Fish Program
- Combined Program (ESA-Wildlife-Fish)
- City/Town
- SCL Counties

ESA Salmon Habitat & Wildlife Mitigation Lands
(Snohomish, Skagit and Whatcom Counties)

1:260,000



Created 1/17/2017 by Seattle City Light,
Environment, Land & Licensing Business Unit.
SCL provides no warranty, expressed or implied,
as to the accuracy, reliability or completeness of this data.

Service Layer Credits: Sources: Esri, HERE, DeLorme, Intermap, increment P Corp., GEBCO, USGS, FAO, NPS, NRCAN, GeoBase, IGN, Kadaster NL, Ordnance Survey, Esri Japan, METI, Esri China (Hong Kong).







