

# EMMA SCHMITZ / ALKI SEAWALL REPLACEMENT

---

A Partnership with the US Army Corps of Engineers



**Seattle**  
Parks & Recreation

healthy people healthy environment strong communities

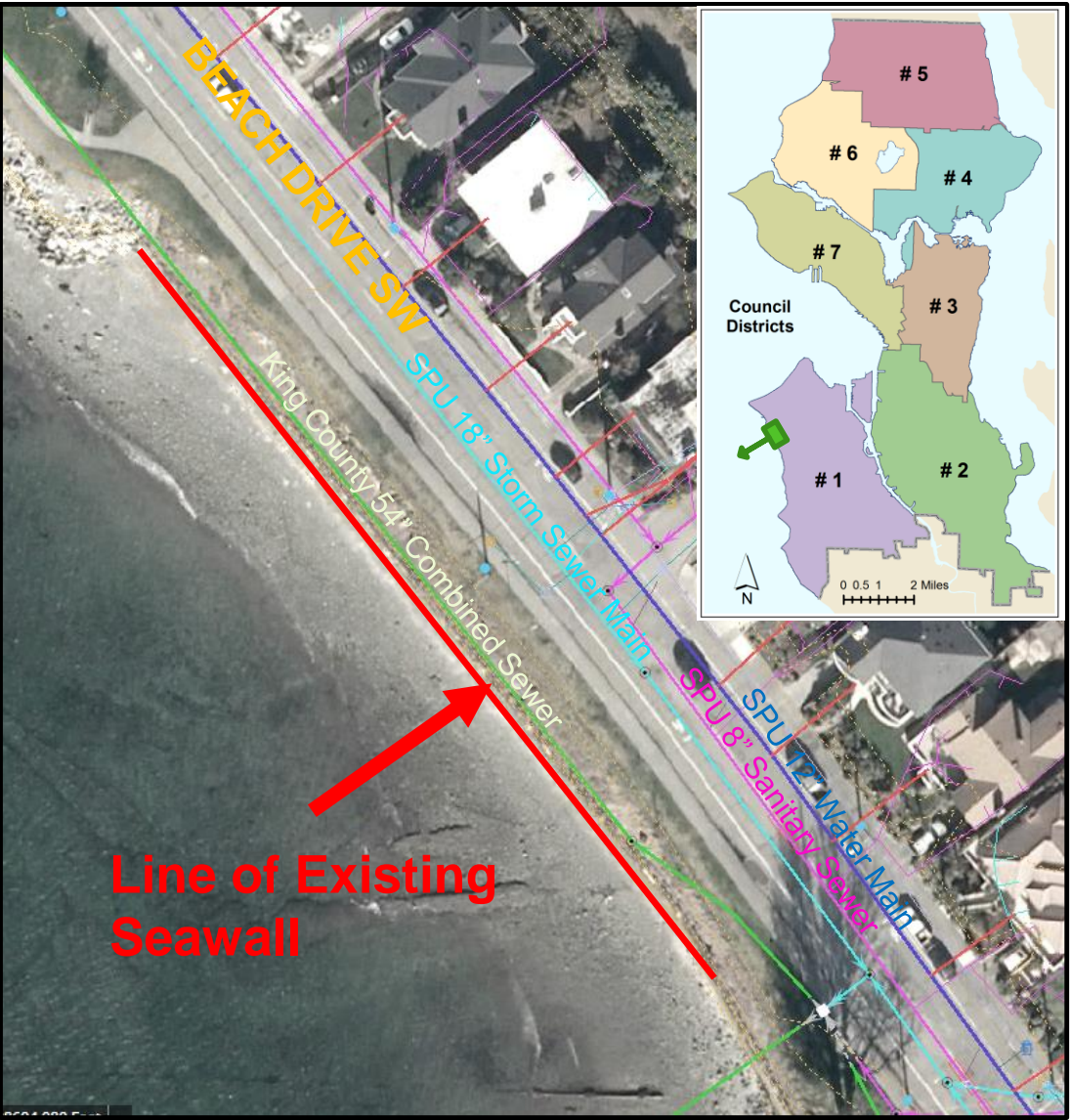


# EMMA SCHMITZ / ALKI SEAWALL

4503 Beach Dr SW  
Built circa 1927  
500' long x 11' high (approx.)

Supports important infrastructure:

- King County 54" Sewer Main (within 2' of seawall)
- PSE Gas Line
- SPU 18" Storm Sewer Main
- SPU 12" Water Main
- SPU 8" Sanitary Sewer Main
- SCL Utility Poles/Lights
- Beach Drive SW ROW





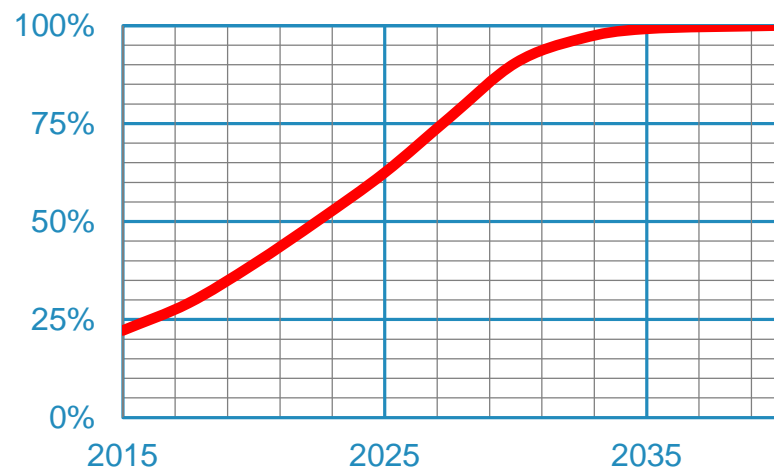
# CURRENT PHYSICAL CONDITION

- Seawall is badly deteriorated - 30% probability of failure during a storm event.
- Probability of failure increases significantly each year.



## Emma Schmitz Seawall

Probability of Failure in Any Given Year



# PROJECT SCHEDULE AND STATUS

- 2013: Parks & Recreation (SPR) enters into preliminary study agreement with US Army Corps of Engineers (USACE)
- 2014: USACE completes study, confirming instability of existing seawall and cost effectiveness of replacement
- 2015: USACE proposes joint project for new seawall design and construction for an estimated total cost of \$2.9M; SPR's cost share to be 35% (\$1.0M)
- 2016: SPR secures \$1.1M budget, sufficient to cover its full share, with 10% contingency
- 2017: USACE drafts Project Partnership Agreement (PPA) to formalize cost share agreement for new seawall design and construction
- ***NOW: City to approve ordinance authorizing SPR to sign PPA***
- August 2017-2018: Detailed design of replacement seawall, including permitting, to be done by USACE with Parks support
- Fall 2018: Begin construction via USACE-controlled Public Works contract
- Spring 2019: Project complete



Questions?



**Seattle**  
**Parks & Recreation**

healthy people healthy environment strong communities

