

COUNT
US
IN



REPORT

RELEASE

2017

CORE COMPONENTS



- General Street Count
- Youth and Young Adult Count
- Sheltered Count
- Survey

METHODOLOGY CHANGES

- New, nationally recognized methodology used by many west coast cities
- Countywide participation of 160 **paid guides and surveyors** with lived experience of homelessness
- A shift from a “known areas” approach for the general street count to a **virtual 100% canvassing of 398 census tracts** in King County, including special vehicle-count teams, by 600 volunteers

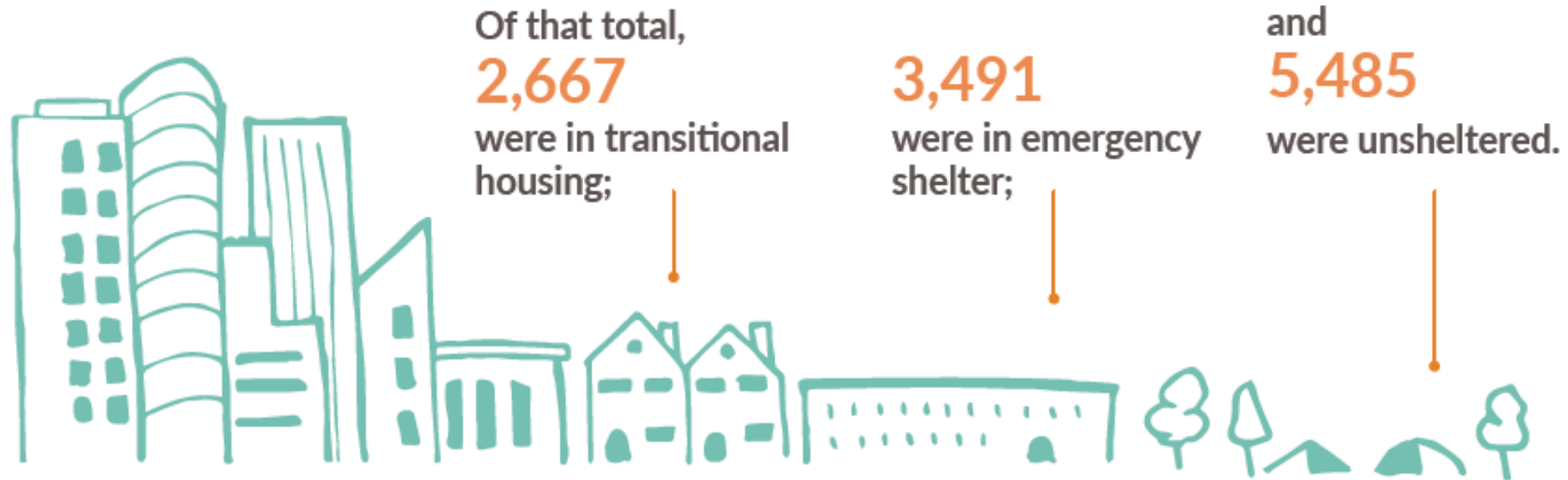
RESULTS

NEW, MORE COMPREHENSIVE COUNT FOR 2017 REVEALS 11,643 PEOPLE EXPERIENCING HOMELESSNESS IN SEATTLE/KING COUNTY ON JANUARY 27, 2017.

On Jan 27, 2017

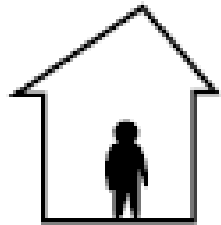
11,643

people were experiencing homelessness in King County.



RESULTS

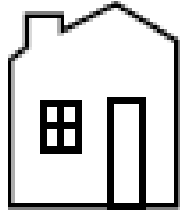
53% sheltered (*n*=6,158)



3,491

(30%)

Emergency
Shelter



2,667

(23%)

Transitional
Housing or
Safe Haven

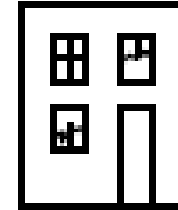
47% unsheltered (*n*=5,485)



1,486

(13%)

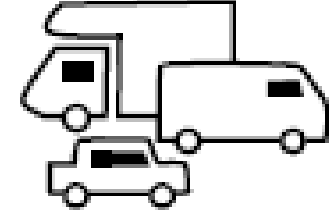
On the
Street



138

(1%)

Abandoned
Buildings



2,314

(20%)

Vans/ Cars/
RVs



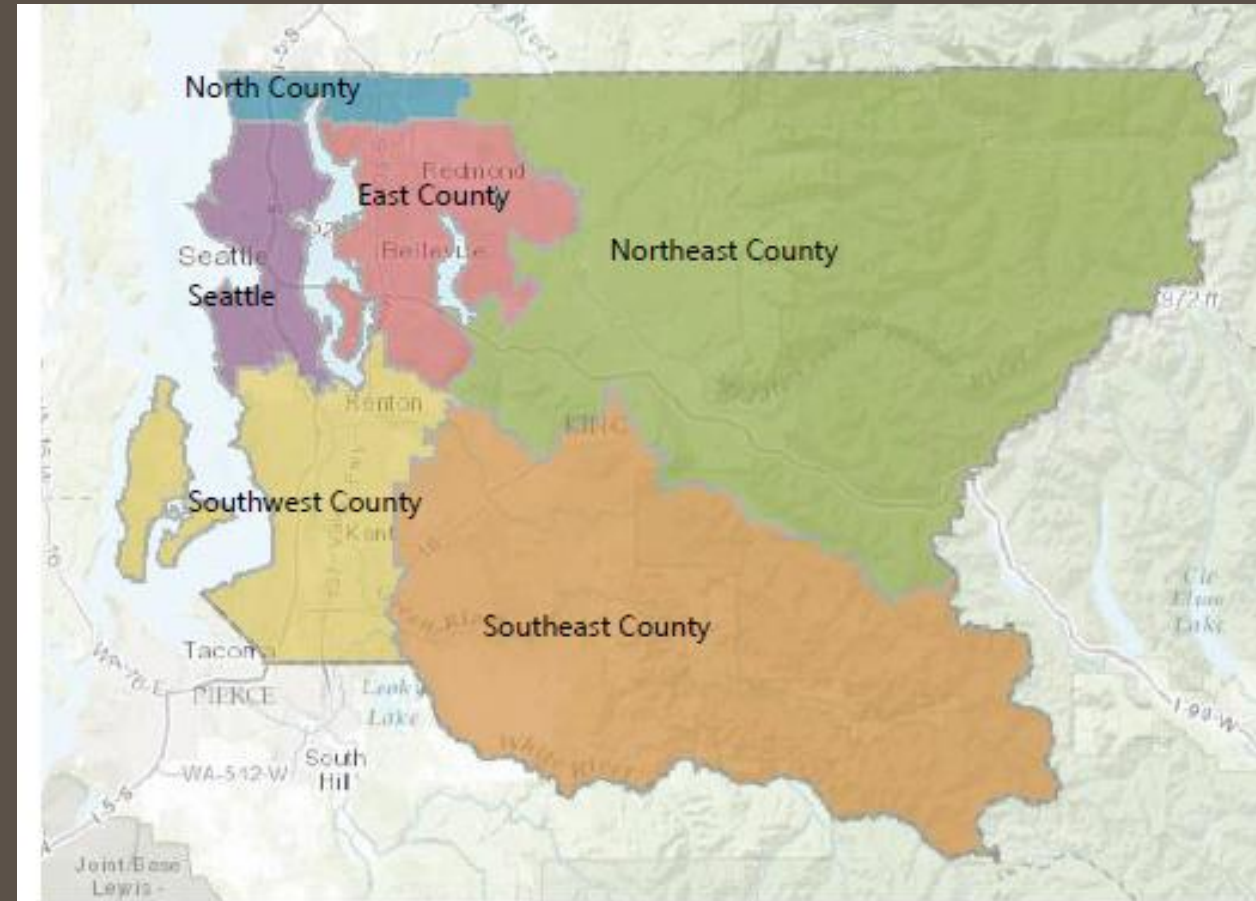
1,547

(13%)

Tents

RESULTS

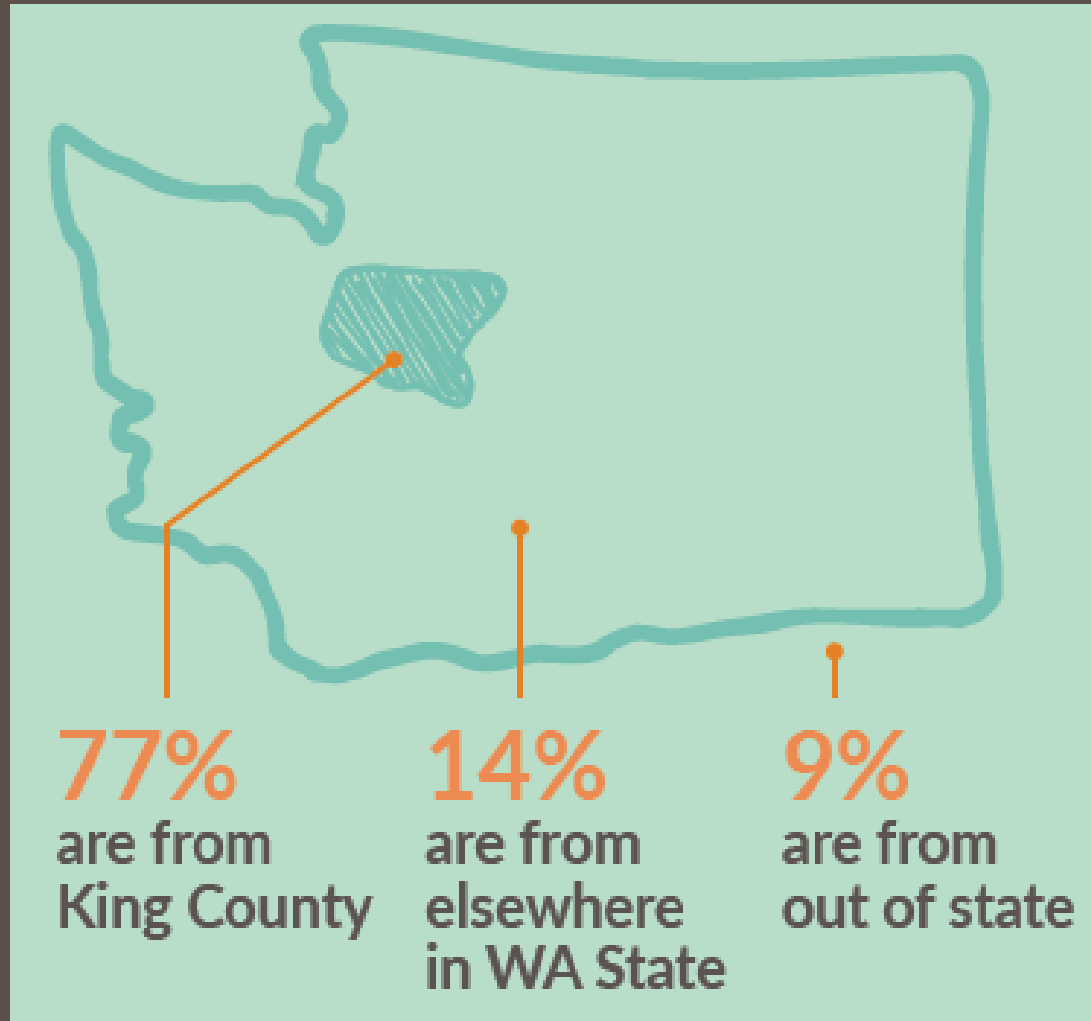
| 2017 | | | | |
|------------------|-------------|--------------|-------------|--------------|
| | UNSHELTERED | | SHELTERED | |
| REGION | % | <i>n</i> | % | <i>n</i> |
| East County | 5% | 284 | 6% | 347 |
| North County | 1% | 53 | 2% | 148 |
| Northeast County | 2% | 119 | 1% | 47 |
| Seattle | 70% | 3,857 | 76% | 4,665 |
| Southwest County | 20% | 1,102 | 15% | 915 |
| Southeast County | 1% | 70 | 1% | 36 |
| TOTAL | 100% | 5,485 | 100% | 6,158 |



RESULTS

- **24%** were individuals were experiencing chronic homelessness (2,773)
- **11%** were individuals identified as veterans (1,329)
- **24%** were individuals in families with children (2,833 people in 905 families)
- **13%** were unaccompanied youth and young adults (up to 25) (1,498)

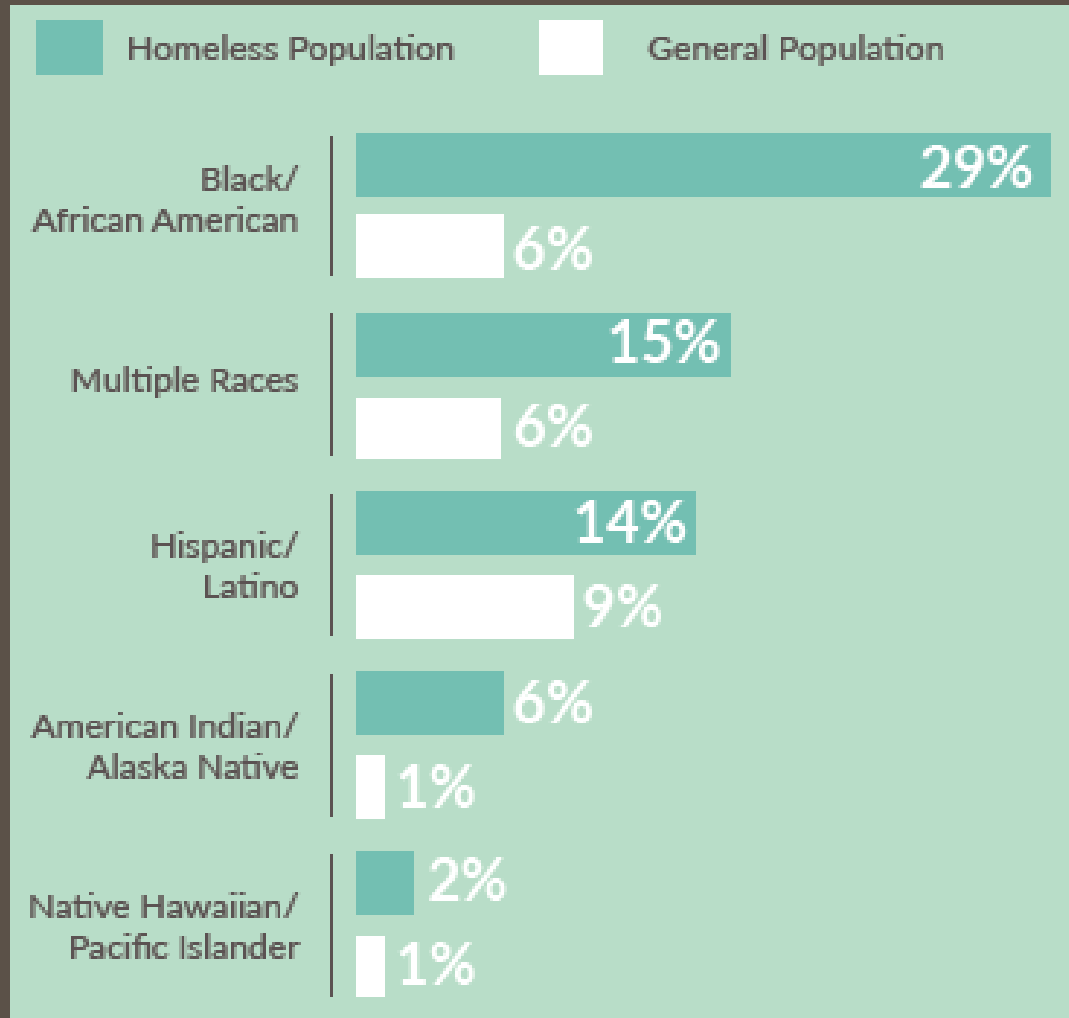
RESULTS



People experiencing homelessness in Seattle/King County are **OUR NEIGHBORS.**

*74% were in living in housing that they rented, owned, or with friends/relatives when they became homeless

RESULTS



Homelessness
disproportionately impacts
PEOPLE OF COLOR.

RESULTS

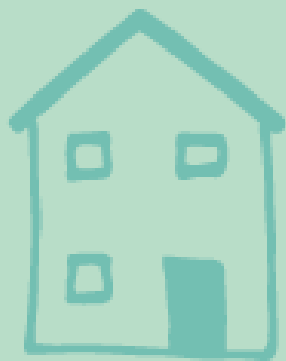
Over **90%**
of people experiencing homelessness
would take safe/affordable housing
if it were offered.



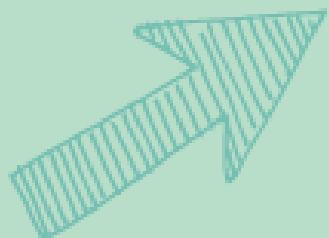
Rental assistance and **more affordable housing** were cited as the top two supports needed to end their experience of homelessness.

People experiencing
homelessness need
HOUSING.

TRANSFORMING THE SYSTEM



Over **7,500** households moved from homelessness to permanent housing in 2016,

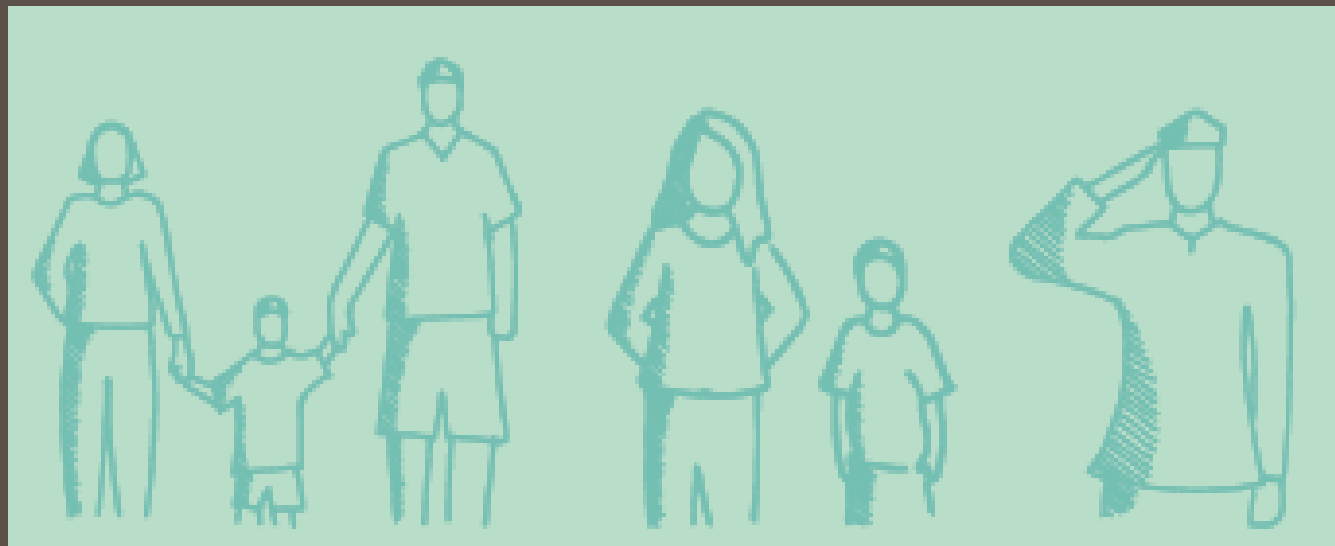


a **50%** increase compared to 2013.

We are moving
MORE PEOPLE from
homelessness to
housing - and doing it
FASTER THAN EVER.

SOLVING HOMELESSNESS

The challenges of sky-high rents, stagnant wages, and limited access to behavioral health **MUST BE ADDRESSED IF WE ARE TO SOLVE HOMELESSNESS.**



THE WORK AHEAD

Homelessness will only be solved with the commitment and resources of our **ENTIRE COMMUNITY.**

Join Us



Say Hello



Share Your Time



Speak Up



Rent Or Hire

QUESTIONS?



visit **AllHomeKC.org** for more information