



What:

Department of Neighborhoods

- **Mission:** We serve residents of Seattle by providing programmatic support and building inclusive partnerships to ensure that they receive equitable access to government.
- **Vision:** Strengthening Seattle by engaging all communities.
- **Tag line:** Building blocks. Connecting dots.

How:

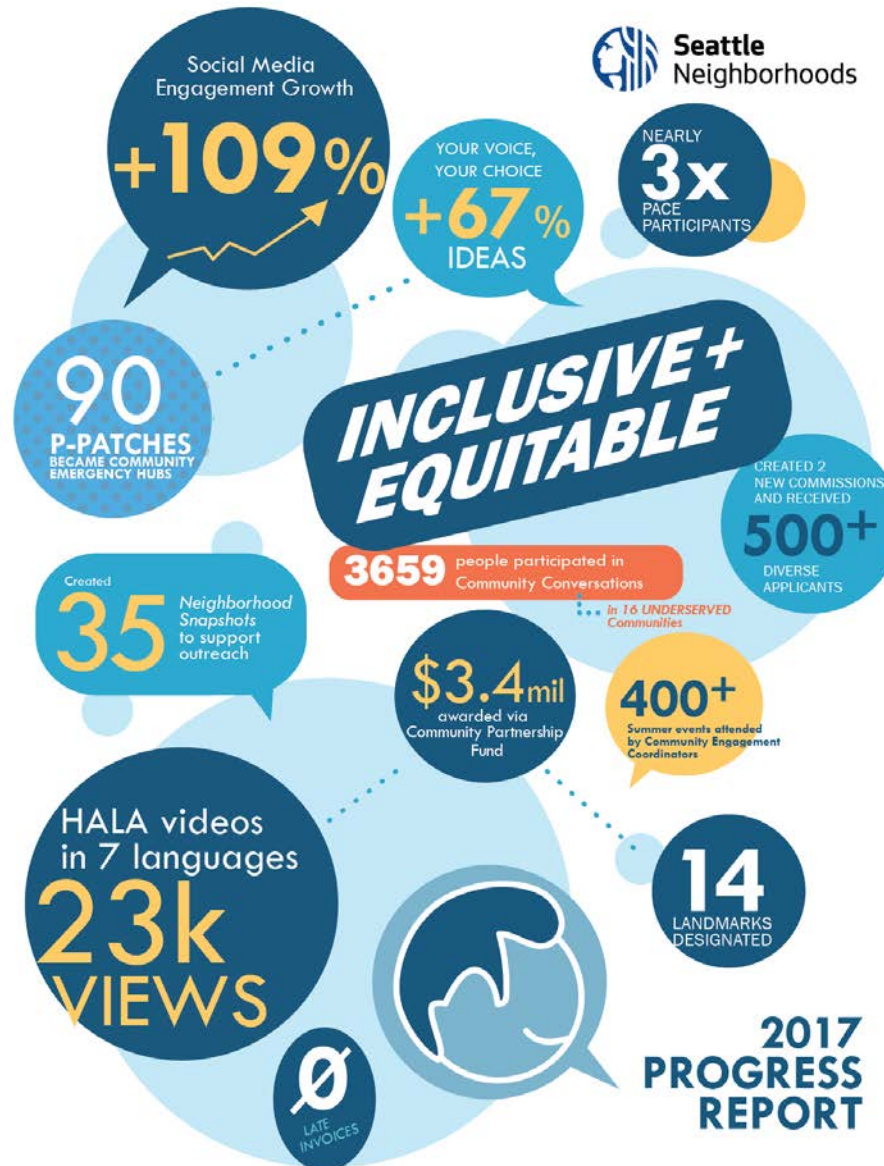
- **Promote public participation** in decision making processes so that government is more responsive to local needs and requests.
- **Create more opportunities to build partnerships** to address local needs and wants.
- **Facilitate communication, collaboration,** and interaction among all communities regarding their common and disparate concerns.
- **Foster a sense of community for all** people to express ideas and opinions about their neighborhoods, communities and their government.

How: *continued*

- We **listen and learn**, and solicit feedback that shapes outcomes.
- Make information understandable and digestible. **People speak!**
- Make participation convenient, and **accessible**.
- Follow-up and follow-through: **Explain how input will be used** and show how that input has an impact on the decisions made. If it has not, explain why.
- Use an array of tools and resources, knowing **multiple approaches** are needed. **Give people safe space to speak.**
- **Engagement is constant** and never ending, like a relationship. Done well, we are bringing people along, doing projects for and with communities, rather than “to” them.
- Lastly, **it’s about people**. Put people before projects. This is about relationship and building trust. Authentic and genuine and continuous.

Why:

“Successfully engaging the community in the process increases likelihood of public support and better outcomes.”



Funding:



Neighborhood Matching Fund

In 2017, we made the Neighborhood Matching Fund easier to apply and increased its scope and reach. Two former funds were consolidated to create the *Community Partnership Fund* which provides funding from \$5,000 to \$100,000 and has three funding cycles.

The Results?

2016: Awarded 7 applicants a total of \$640,000 for projects over \$25,000.

2017: Awarded 53 projects totaling \$3.1 million for projects over \$25,000.

381% increase in the amount awarded as compared to 2016 for projects over \$25,000.

45% were first time applicants (117 out of 259).

Your Voice Your Choice

In 2017, we saw a 67% increase in the number of ideas collected (534 to 894).

Engage:



To stay relevant even the best ideas must evolve.

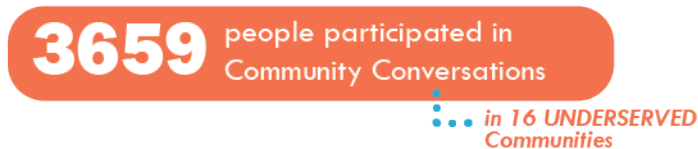
Department of Neighborhoods has focused on equitable outreach and engagement practices that reaffirm the City's commitment to inclusive participation.

Outreach and engagement is the core of what we do and equity and transparency are our guiding principles.

Community Conversations in 2017: Reached **3,659** people in underserved communities.

Current Liaisons: 75. Languages/Communities. Represented by Liaisons: 32
Total New Liaisons in 2017: 23

Outreach and Engagement team: They provide a personal connection between community members and City government, serve as the “eyes and ears” keeping their finger on the pulse of community needs, and support outreach conducted by other City departments.



Outreach:



Social Media Growth

Overall Social Media Growth (across all platforms): 108%.

- Facebook Engagement: 130%.
- Twitter Engagement: 84%.
- Instagram Engagement: 115%.



Newsletter Audience Growth

- Overall Subscriber Growth: 88%.



Reddit: 596 comments and questions received.

Telephone Town Halls; 70,000 households invited.

Videos: Year in Review video in 8 languages (23K shares in language, 10K shares in English).

Other:

NEARLY
3x
PACE
PARTICIPANTS

90
P-PATCHES
BECAME COMMUNITY
EMERGENCY HUBS

HALA videos
in 7 languages
23k
VIEWS

75+
Community Liaison
projects completed

P-PATCH GIVING
GARDENS DONATE
63k
POUNDS OF PRODUCE
TO FOOD BANKS

14
LANDMARKS
DESIGNATED

Equity: By The Numbers

- 80+ Surveys posted on Add Your Voice
- 79 Intakes conducted
- 530+ applications received for new Commissions
- 209 issues identified on the 2017 FIFI walks
- 75 project collaborations
- 137 translations
- 1,931 attendees to our Transportation Equity Fairs
- 68 participants in PACE, compared to 24 year
- 48 applications received for YOF, compared to 29
- Less than 3% plot vacancy in our P Patch program
- 14 landmarks designated
- 0 late invoices, during SRI transition

New Tools:

PEOPLE



RACE/ETHNICITY:

American Indian + Alaska Native 1.5%
Asian 30.4%
Black or African American 11.2%
Hispanic or Latino, any race 4.4%
Native Hawaiian + Pacific Islander 0.4%
Some other race 0%
Two or more races 1.8%
White 50.3%

LANGUAGES: For translation & interpretation, DON can help identify recommended languages.

11

Total Languages Spoken

Commonly Spoken:
Korean / Mandarin / Cantonese

WHAT WE'RE HEARING

Housing/Homelessness

- Desire for workforce housing
- Homelessness & encampments
- Equitable Development Initiative, Civic Square & affordable housing funds

Transportation

- Improved ADA accessibility

Parks/Open Space

- Crime and drug dealing
- Positive programming at Occidental Park
- Historic preservation concerns with the Alliance for Pioneer Square's Pioneer Park plan

Small Business/Economic Development

- Alley conflicts & business loading access
- Support for existing businesses during construction
- Strong neighborhood business recruitment

PIONEER SQUARE

UPDATED 8/2017

NEIGHBORHOOD NUMBERS

	Pioneer Square	Citywide
Renter households	% 95.2	53
People under 18 years of age	% 5.6	15
People age 65 and over	% 23.6	11
Persons of color	% 49.7	33
Language other than English spoken at home	% 32.4	22
High school or higher	% 75.4	93
Bachelor's degree or higher	% 36.3	57
Median household income	\$ 19,875	65,277
Unemployed	% 9.1	7
Population below poverty level	44	14

Source: 2009-2013 American Community Survey

LEARN MORE

Local Blogs + News

- realchangenews.org
- pioneersquare.org
- Ethnic Media: seattle.gov/jandaffairs/EMP

Didn't capture it?

Contact the Department of Neighborhoods at NeighborhoodSnapshot@seattle.gov or call 206.615.0856

More Resources

For a document with live web links, visit seattle.gov/neighborhoods/get_informed



Seattle
Neighborhoods

Get Engaged Hot Sheet: December 19-26

12/19/2017 by Sam Read

GET ENGAGED



We want to make it as easy as possible for you to get involved in your City and your community!

Here are 5 things you can do this week to **GET ENGAGED!**

Share Your Thoughts on the Fort Lawton Draft Environmental Impact Statement:

The City's vision for Fort Lawton is an affordable, livable community that creates opportunities for those with low incomes to live in the Magnolia neighborhood, and takes advantage of the opportunity to increase recreational and open space for Seattle. On December 14th, the City of Seattle published a Draft Environmental Impact Statement (DEIS) that undertakes detailed environmental study of the proposal. Share your thoughts on the DEIS. **Public comment period open through January 29, 2018.**

Share Your Feedback on Capitol Hill Design Guidelines: The Office of Planning and Community Development needs feedback from the community to guide their efforts in updating the Capitol Hill Design Guidelines to help shape new development in the neighborhood. **Public comment period open through December 31, 2017.**

Join the Seattle Pedestrian Advisory Board (SPAB): SPAB is accepting applications for new members to help make walking in Seattle safer and easier. This volunteer board advises the Mayor and City Council, participates in planning and project development, evaluates policies, and makes recommendations to all city departments. **Apply by January 26!**

Provide Scoping Comments Regarding the Roosevelt RapidRide Project:

The Roosevelt RapidRide Project will provide a high-quality service connecting Downtown Seattle with the neighborhoods of South Lake Union, Eastlake, University District, and Roosevelt. Seattle Department of Transportation has initiated a 40-day scoping period to help determine issues to be addressed in



“I like feeling that my voice counts.”

-Youth Voice, Youth Choice participant

knowing

“I like ~~feeling~~ that my voice counts.”

-Youth Voice, Youth Choice participant

Seattle.gov/neighborhoods

B Frontporch.seattle.gov

•

🐦 @SeaNeighborhood

f @Seattle Neighborhoods

📷 Seattle_neighborhoods

📞 206.684.0464

✉ newDON@seattle.gov



Seattle
Neighborhoods