

Seattle Promise

Gender Equity, Safe Communities, New Americans, & Education
Committee

March 14, 2018





A Call to Action...

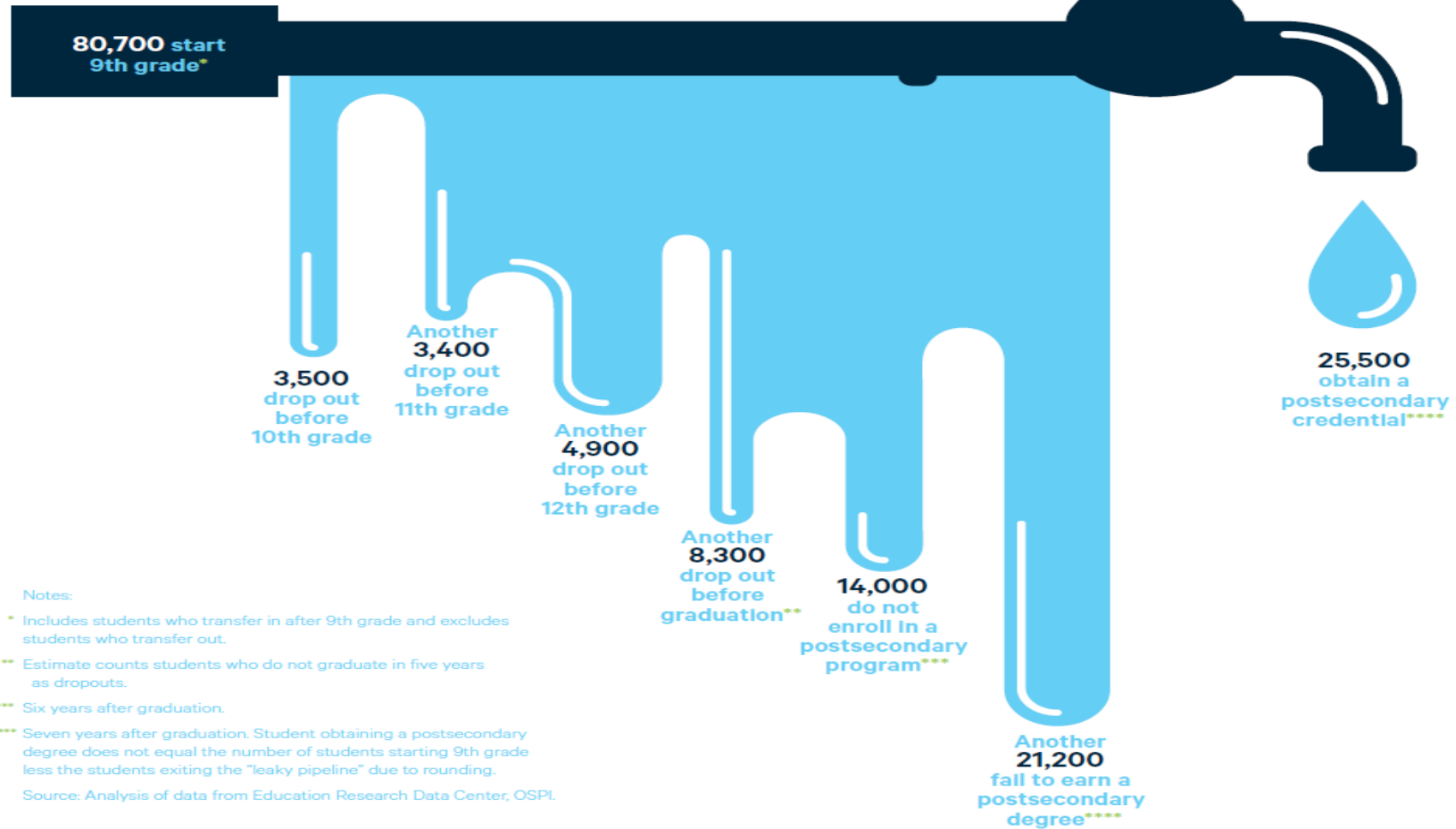
*THERE WILL BE **740,000 JOB OPENINGS** IN WASHINGTON IN THE NEXT FIVE YEARS. STATE JOB GROWTH OVER THIS PERIOD IS EXPECTED TO BE NEARLY THREE TIMES THE NATIONAL AVERAGE. THE MAJORITY OF JOB OPPORTUNITIES—PARTICULARLY THOSE THAT WILL SUPPORT UPWARD MOBILITY AND GOOD QUALITY OF LIFE—**WILL BE FILLED WITH WORKERS WHO HAVE POST-SECONDARY EDUCATION OR TRAINING.***

PATHWAYS TO GREAT JOBS
IN WASHINGTON STATE;
WASHINGTON ROUNDTABLE REPORT, 2016



The "Leaky Pipeline..."

Washington students fall behind early and fall out over time.

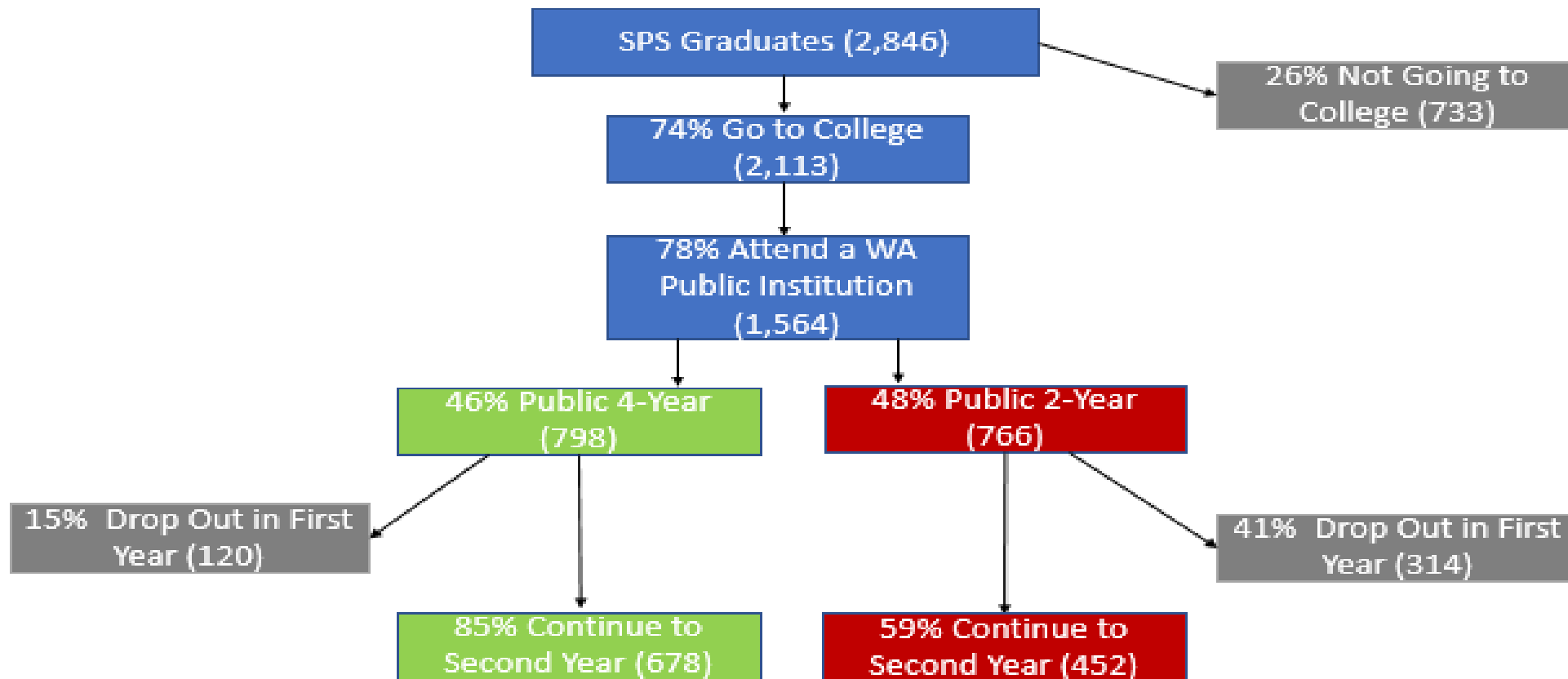


City of Seattle
Jenny Durkan, Mayor

Source: Pathways to Great Jobs in WA State- WA Roundtable Report, 2016

A Local Snapshot...

Seattle Public Schools (SPS) Postsecondary Pathway High School Class of 2015 college-going behaviors

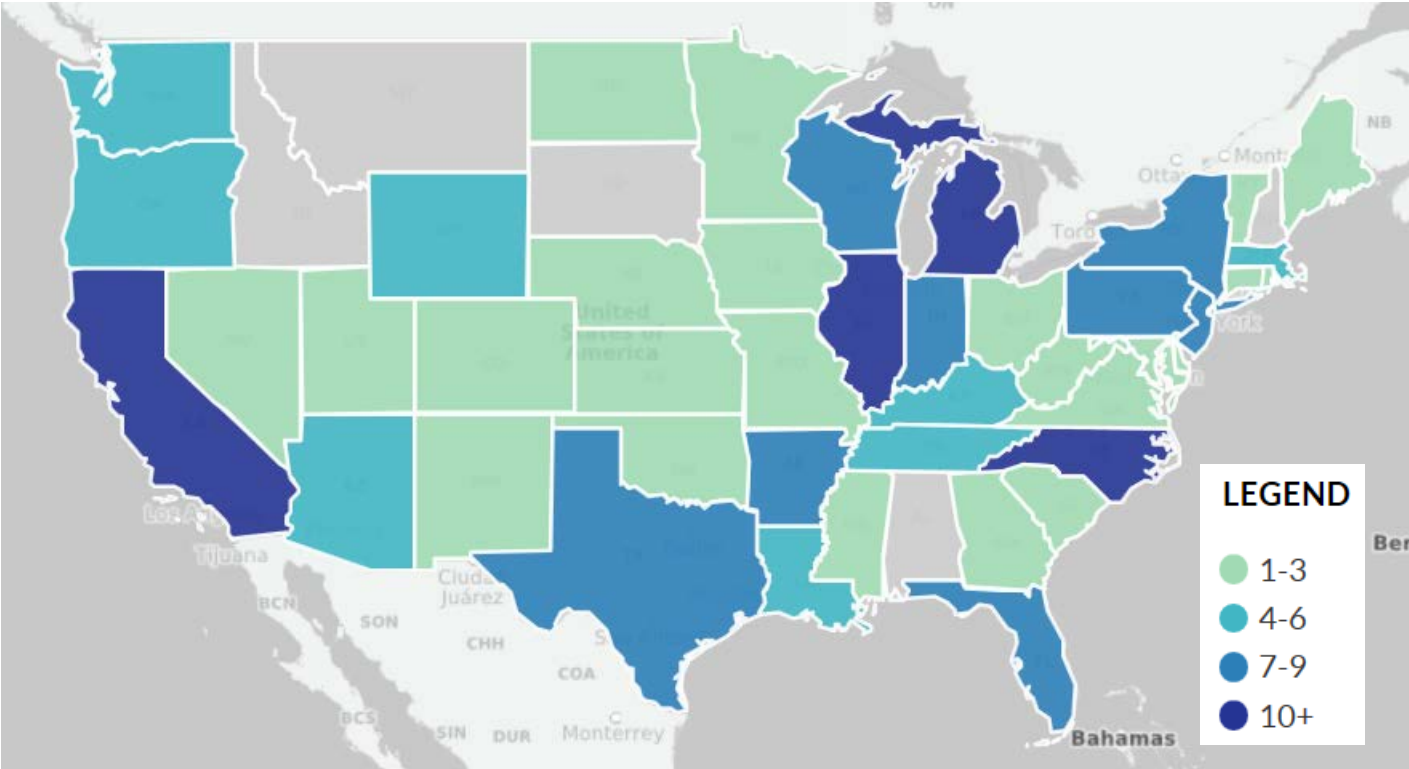


Source: [ERDC's 2015 P-20 Reports Comparing Districts](#) and [OSPI Postsecondary Enrollment](#)





The National Landscape...



Source: [Univ. of Pennsylvania College Promise Programs Website](http://universityofpennsylvania.edu/college-promise-programs)



City of Seattle
Jenny Durkan, Mayor



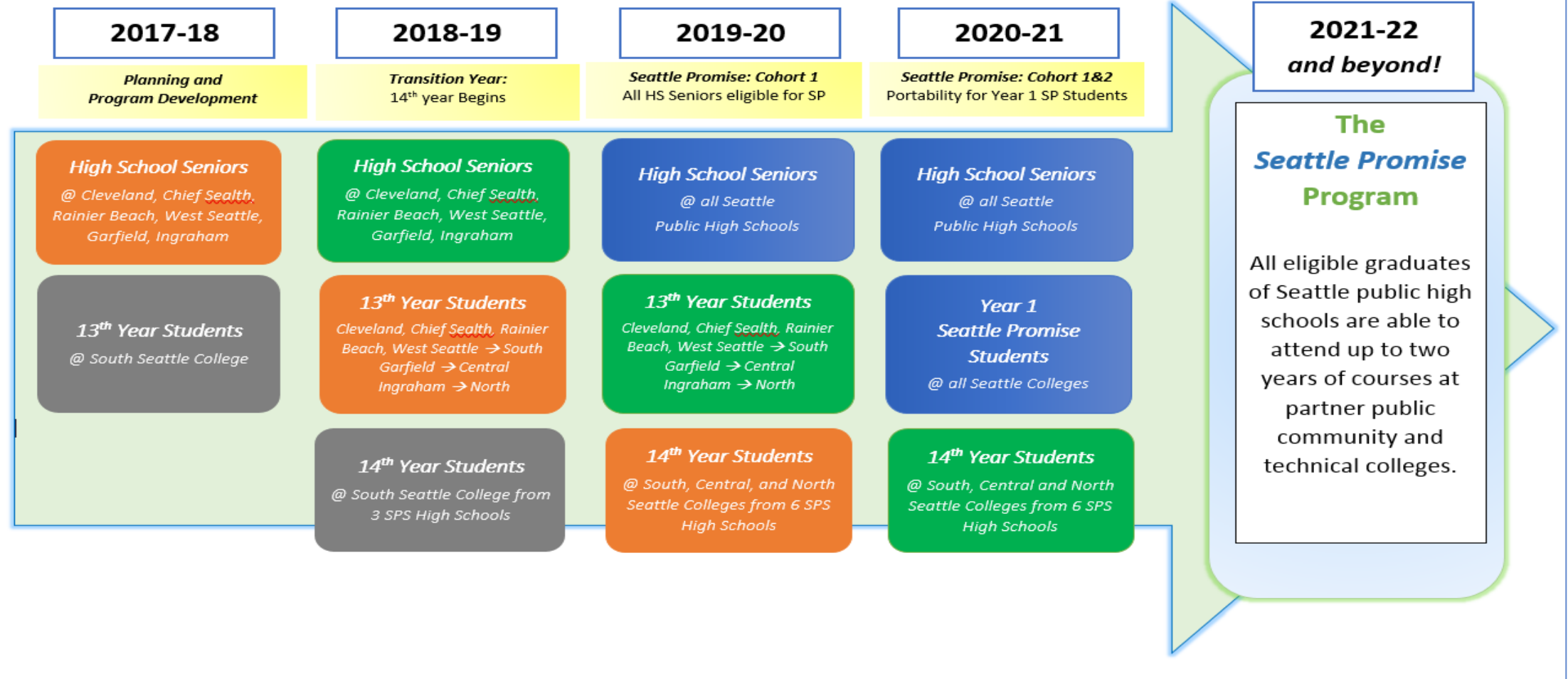
South Seattle College: 13th Year Promise Scholarship



City of Seattle
Jenny Durkan, Mayor

Design Process Timeline

WORKING TOWARD THE SEATTLE PROMISE...



Seattle Promise Transition Year (2018-19)

Program	Partner Institutions	Guidelines	
13 th Year	South Seattle College Associated HS: Cleveland, Chief Sealth, Rainier Beach, and West Seattle	Eligibility	Each College determines eligibility for students enrolled in the Seattle Promise program
		Portability	Students must attend the college assigned to their partner school
		Student Supports	Funding will be provided for student supports
	Readiness Academy programming is determined by each participating institution		
	North Seattle College Associated HS: Ingraham		
	Seattle Central College Associated HS: Garfield		
14 th Year	South Seattle College	Eligibility	Maintain Satisfactory Academic Progress standards as set by the Financial Aid Office (Earn a minimum of 67% of enrolled credits per quarter <u>and</u> maintain at least a 2.0 cumulative GPA); Full-Time Enrollment; Enrolled as a 13 th Year program participant in Spring 2018; Completion of FAFSA
		Portability	During the 2018-19 academic year, the 14 th Year Scholarship can only be used at South Seattle College
		Student Supports	One-time funding for student supports



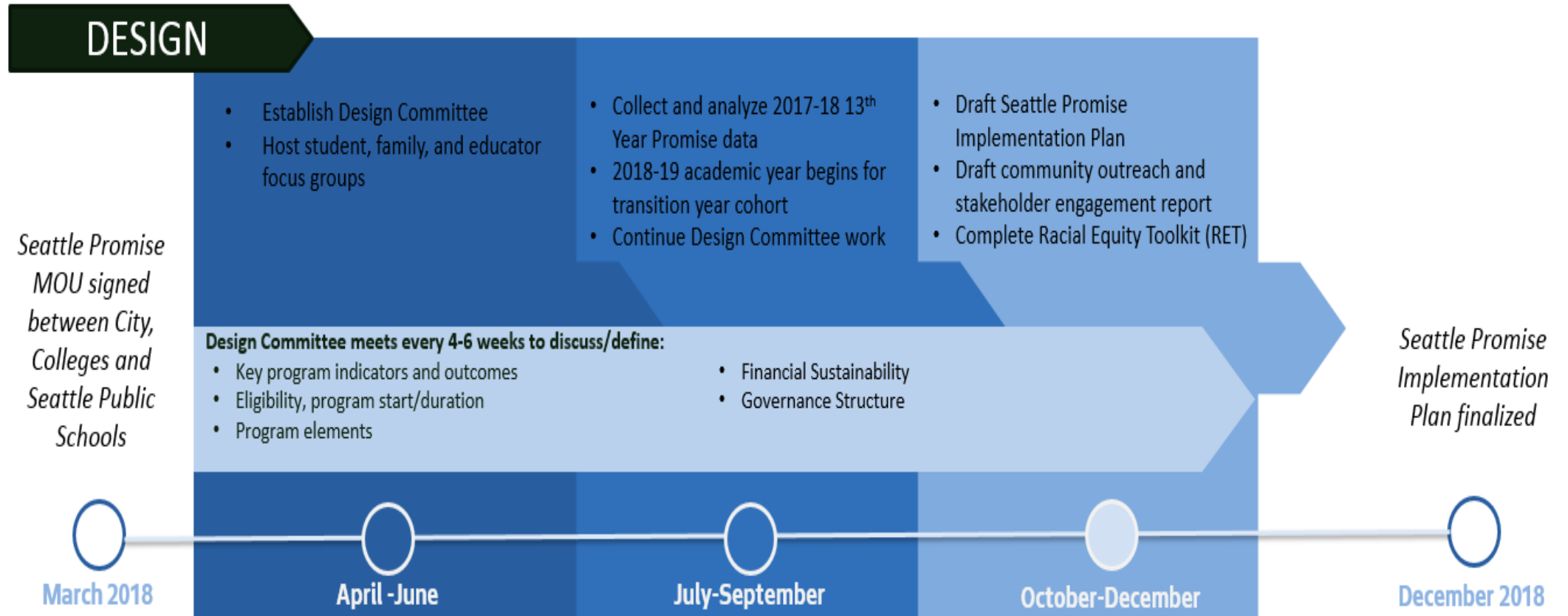


Transition Year Budget Summary

Program	18-19
High School Staff and Program Support	\$ 452,114
13th and 14th Year Scholarships	\$ 855,000
Non-Tuition Financial Support	\$ 171,000
College Staff and Program Support Costs	\$ 297,887
Total	\$ 1,776,000

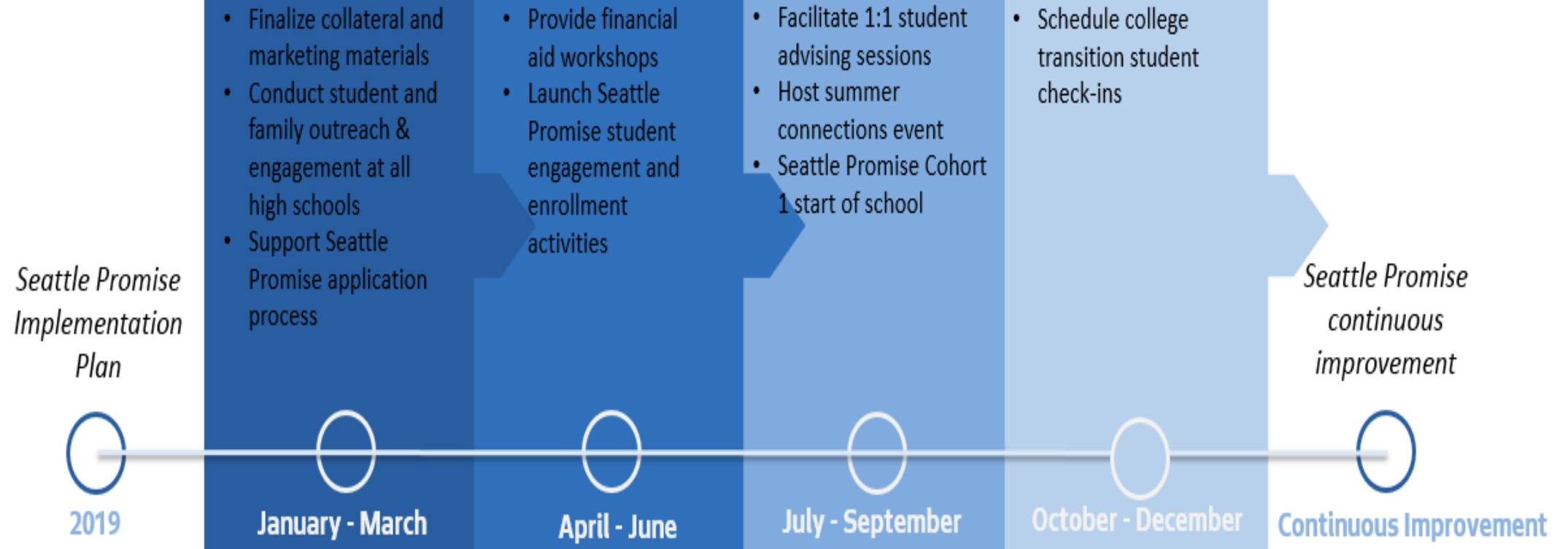


Seattle Promise Design Committee



Seattle Promise Implementation

IMPLEMENTATION





Sustaining Seattle Promise



Questions...

Chris Alejano

Policy Advisor

Office of the Mayor

Chris.Alejano@seattle.gov

Sheila Edwards Lange

President

Seattle Central College

Sheila.EdwardsLange@seattlecolleges.edu

Dwane Chappelle

Director

Department of Education and Early Learning

Dwane.Chappelle@seattle.gov

Clarence “CJ” Dancer

Postsecondary Attainment

Policy & Program Advisor

Department of Education and Early Learning

Clarence.Dancer@seattle.gov



City of Seattle

Jenny Durkan, Mayor