

WSBLE Project Administration Agreement Ordinance



Seattle City Council Sustainability & Transportation Committee

Jon Layzer, Chris Rule

April 3, 2018

West Seattle & Ballard Link Extensions (WSBLE) Background

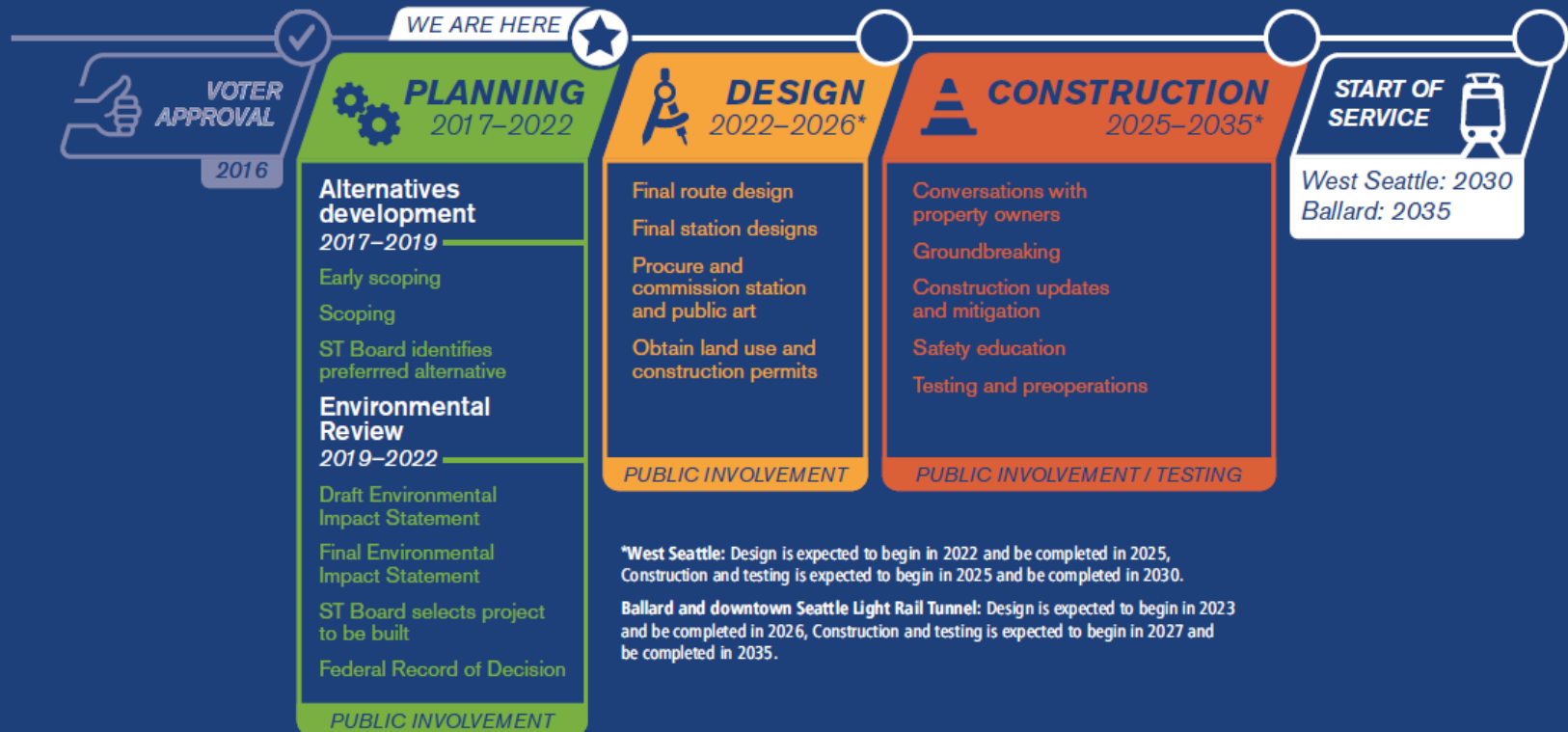
Representative project:

- Mix of tunnel and elevated guideway
- 11.8 miles
- 14 stations

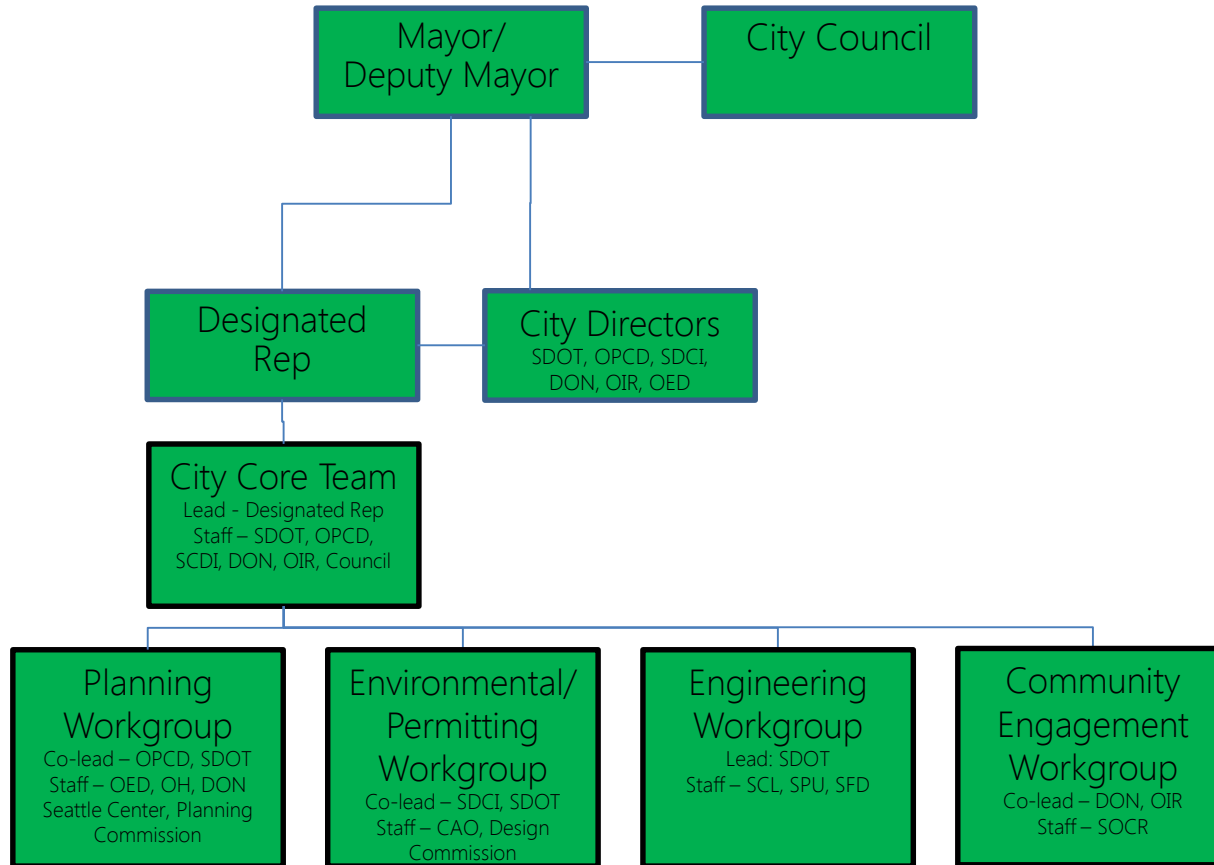


WSBLE Background

- In the alternatives development phase
- Target identification of a preferred alternative by April 2019



City ST3 WSBLE Organization



WSBLE Project Administration Agreement

- Provides a framework for Sound Transit reimbursement of certain City services in support of expedited project development for WSBLE
- Companion to the Partnering Agreement executed in January
- Provides for reimbursement through Task Order
 - Task Order One would provide for certain City management, advanced engineering, and advanced permitting services during Alternatives Development



Questions?

jonathan.layzer@seattle.gov

<http://www.seattle.gov/transportation>

