

Seattle Parks and Recreation State Recreation and Conservation Office (RCO) Grant Applications for 2018

Civic Development, Public Assets and Native Communities Committee

September 19, 2018

Seattle Parks and Recreation



City of Seattle

What is 'RCO' and what does it do?

The Recreation and Conservation Office (RCO) is a state agency that manages grant programs to create outdoor recreation opportunities and protect wildlife habitat, farmland and salmon.

Depending on the program, eligible project applicants include cities, towns, counties, ports, utilities, park and recreation districts, school districts, Native American tribes, state agencies, federal agencies and nonprofit organizations. Most grant programs also require that sponsors complete a systematic planning process prior to seeking funding.

Most grant programs require a 1-to-1 match, and that the proposed project be operated and maintained for the purposes for which funding is sought (in perpetuity or until the end of the project's life cycle).



RCO Resolution Summary

- Resolution authorizes Seattle Parks and Recreation (SPR) to submit grant applications to RCO for 12 capital projects.
- The adopted resolution must be submitted to RCO by Oct. 12, 2018 for SPR's projects to remain eligible for funding.
- RCO requires the City to provide match funding; projects must be operated for purposes for which funding is sought.
- 2018 selection process: Staff reviewed projects and compared them against RCO's criteria. This final list was approved by SPR's Project Steering Committee based on:
 - Eligibility, competitiveness, "fitness" in particular grant program
 - Inclusion in a department plan with matching funds
 - Readiness to proceed with design and construction
 - Proposed projects have been vetted with RCO grant staff



How does the RCO grant cycle work?

- RCO grants leverage existing funding for projects in our Capital Improvement Program (CIP).
- Grants are awarded in a public, competitive process.
- RCO requires applicants to submit a resolution that authorizes the request for funding.
- GRANT AWARDS: The RCO Board approves projects in October. Funding will be awarded in June of next year, after state passes budget. Grants are awarded for 1-4 yrs.



How has SPR benefited from RCO grants?

- Since 1966, SPR has been successful in securing RCO funding, averaging \$250K-\$1M per grant cycle, receiving a total of \$34M for 119 projects.

In 2018, SPR has requested \$5.5M for 12 projects through 6 RCO grant programs

RCO GRANT CATEGORY	SUPPORTS PROJECTS THAT
Aquatic Lands Enhancement Account (ALEA)	Acquire, improve, or protect aquatic lands for public purposes
Estuary and Salmon Restoration Program (ESRP)	Restore and protect Puget Sound near-shore areas
Land and Water Conservation Fund (LWCF) & LWCF Outdoor Recreation Legacy Fund	Preserve and develop outdoor recreation resources, including parks, trails, and wildlife lands
Salmon Recovery Funding Board	Protect and restore salmon habitat
Washington Wildlife Recreation Program (WWRP)	Provide a broad range of land protection and outdoor recreation
Youth Athletic Facilities (YAF) program	Develop or renovate outdoor athletic facilities such as ballfields and courts that serve youth under 18

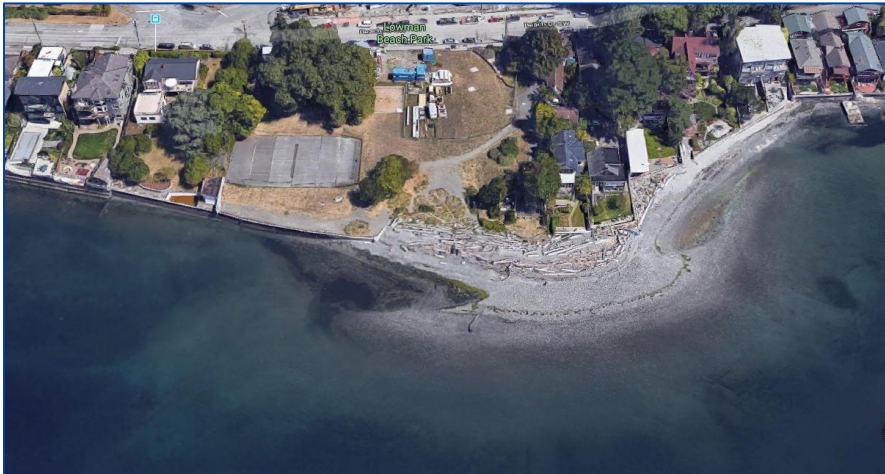




Kubota Garden Enhancements (Phase 1)



Lower Woodland Park Playfield #2



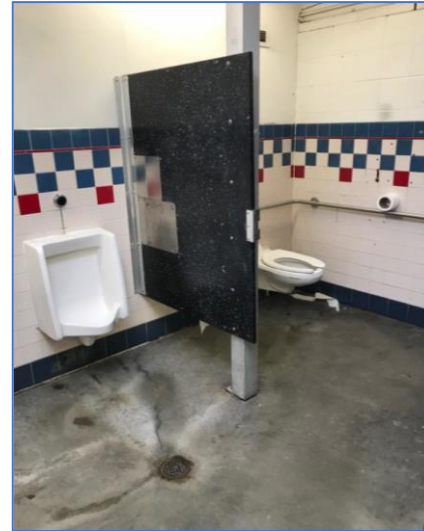
Lowman Beach Nearshore & Seawall Restoration



North Rainier Landbanked Site Park Development



South Park Playfield, Playground & Spray Park



Green Lake Small Craft Center Improvements



SPR's RCO Grant Projects: Summary Chart

Project Name	Location	No. of Applications	Grant Request	Match	Total Project Cost
Green Lake Community Boathouse and Green Lake Dock Replacement/Restrooms	NW Seattle	2	\$ 1,020,000	\$ 1,515,000	\$2,535,000
Kubota Garden Enhancements (Phase 1)	SE Seattle	2	\$ 1,000,000	\$ 17,120	\$1,017,120
Lower Woodland Park Playfield #2 Turf Improvements	NW Seattle	1	\$ 350,000	\$ 1,627,000	\$1,977,000
Lowman Beach Nearshore Restoration	West Seattle	3	\$ 1,100,000	\$ 900,000	\$2,000,000
North Rainier Landbanked Site Park Development	SE Seattle	1	\$ 500,000	\$ 586,060	\$1,086,060
South Park Playfield Turf Conversion & Lights / South Park Playground & Spray Park	SW Seattle	3	\$ 1,570,323	\$ 9,449,189	\$11,019,512
TOTAL		12	\$ 5,540,323	\$ 14,094,369	\$19,634,692





Thank you!

QUESTIONS?