



# Soundview Playfield: Council Land Use Action

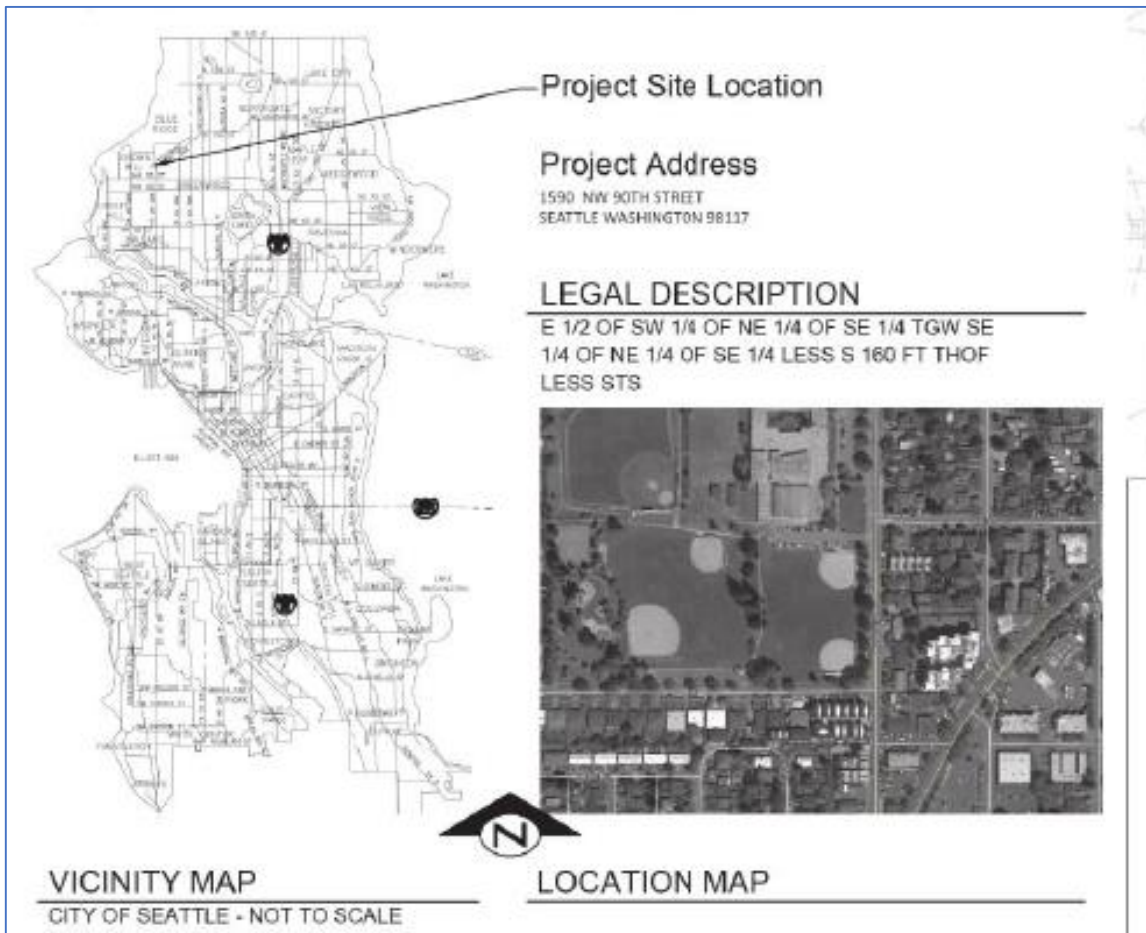
Photo by John Skelton



**Seattle** Department of  
Construction & Inspections

Civic Development, Public Assets and Native Communities Committee  
Carly Guillory, Senior Land Use Planner | March 20, 2019

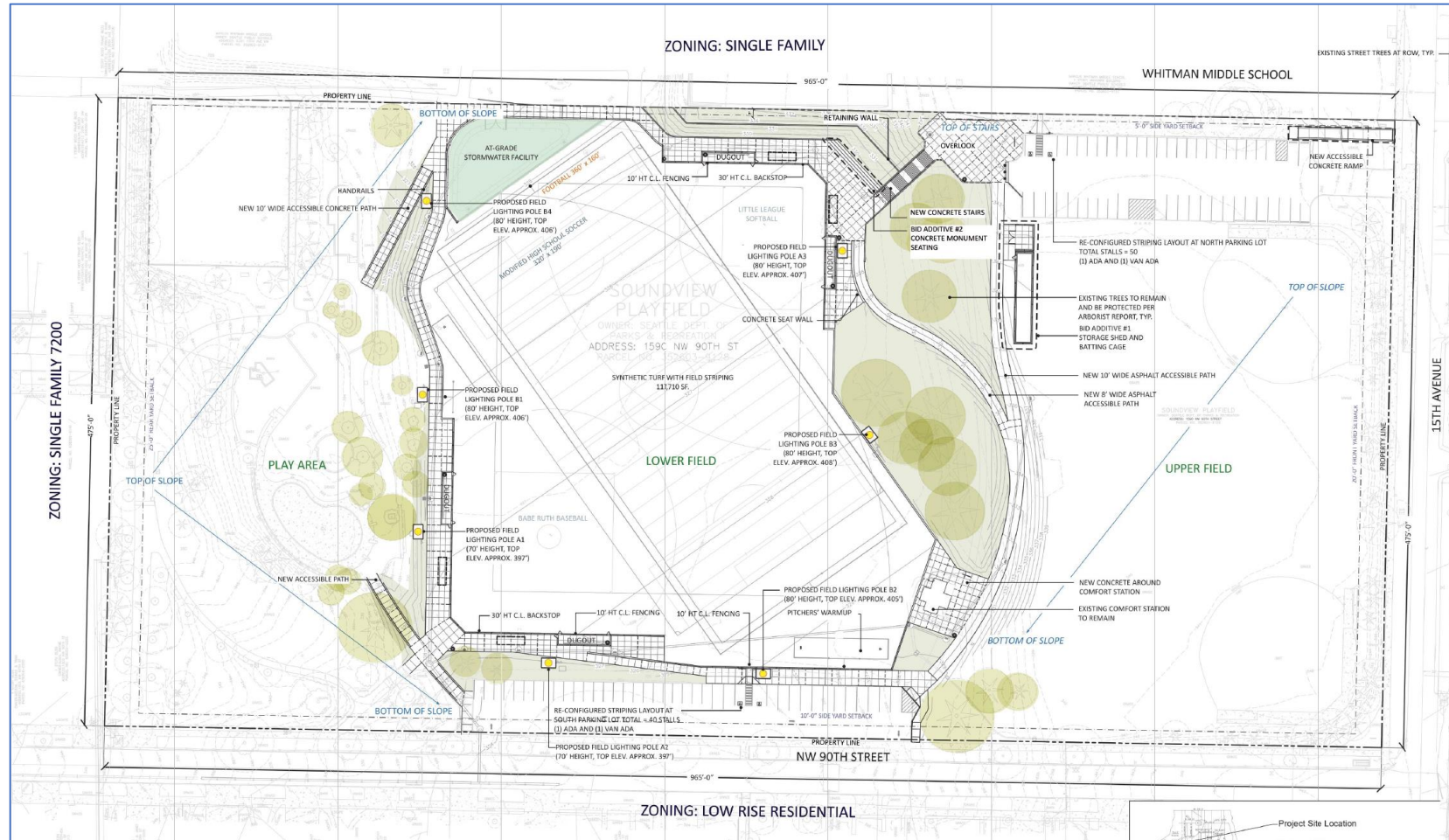
# SOUNDVIEW PLAYFIELD LOCATION



- 1950 NW 90<sup>th</sup> Street
- Bounded by:
  - Whitman Jr. High School to the north
  - 15<sup>th</sup> Avenue NW to the east
  - NW 90<sup>th</sup> Street to the south
  - Single family residences to the west

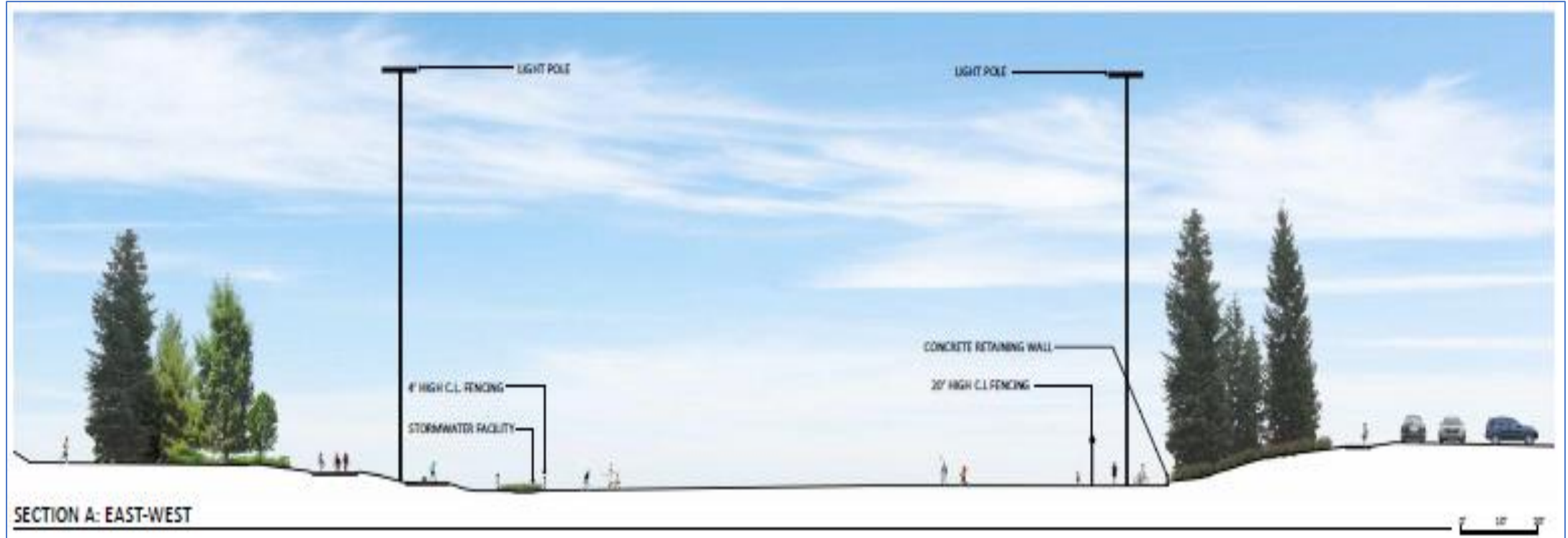


# SITE PLAN



# FIELD POLES

- 7 light poles
- Heights of 70 to 90-feet
- Shielded light fixtures and pole height reduce light spillage and glare



# SDCI RECOMMENDATION

---

- Conditional Approval
  - Construction Management Plan
    - Truck Route Plan
    - Construction Worker Parking Plan



Photo by SPR



# QUESTIONS?

---

Carly Guillory

Carly.Guillory@seattle.gov

206-684-0720

[www.seattle.gov/sdci](http://www.seattle.gov/sdci)

