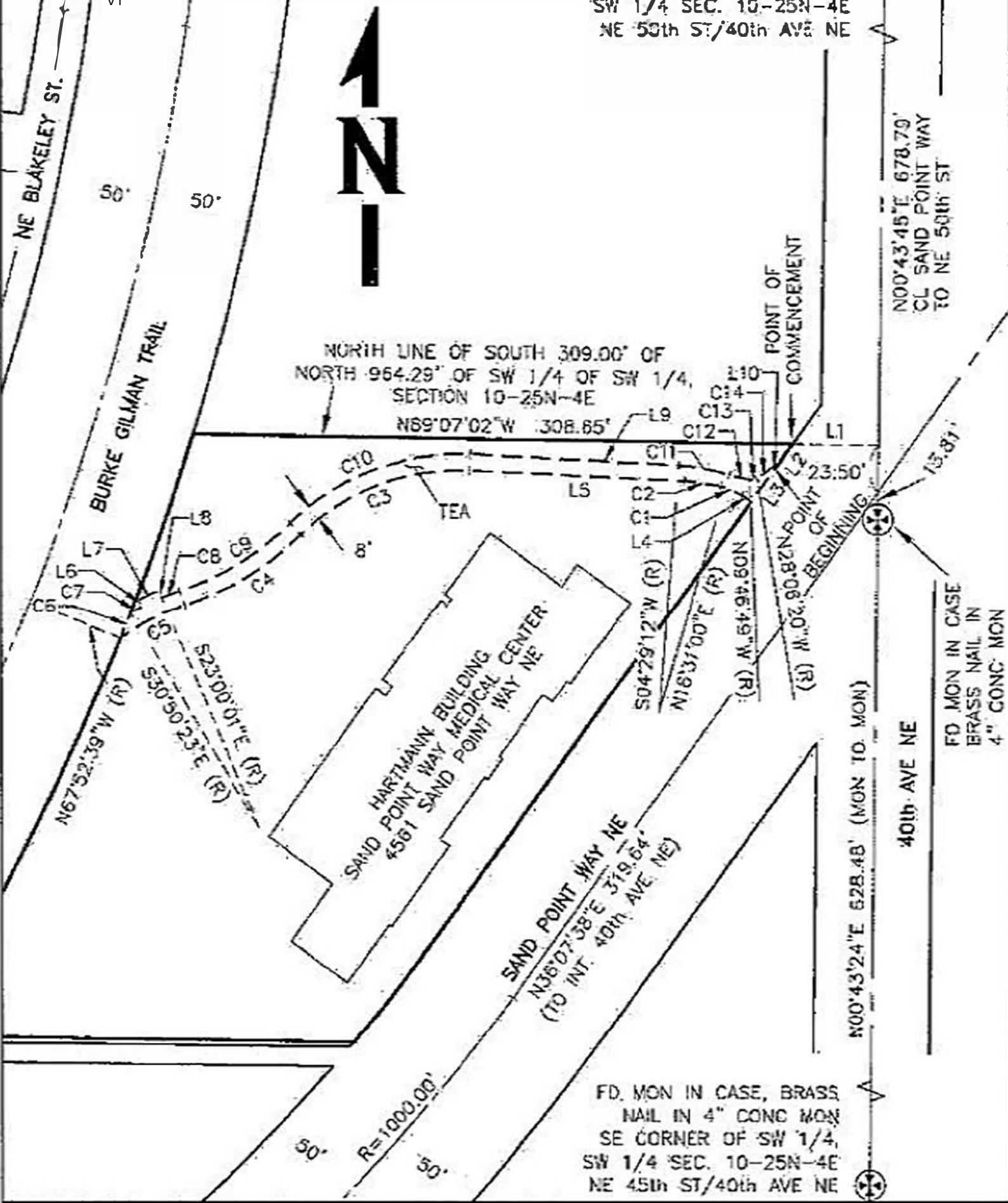


NAIL IN 4" CONC MON,
NE CORNER OF SW 1/4,
SW 1/4 SEC. 10-25N-4E
NE 50th ST/40th AVE NE



FD. MON IN CASE, BRASS
NAIL IN 4" CONC MON
SE CORNER OF SW 1/4,
SW 1/4 SEC. 10-25N-4E
NE 45th ST/40th AVE NE

SHEET NUMBER	1
--------------	---

EASEMENT
TEA
SEATTLE CHILDREN'S HOSPITAL

DRAWING INFO	PROJECT NO.
	P0006503W
	G006508-V-EXD1

SHEET INFO	DATE
DESIGNED BY	CHC
CHECKED BY	LAS
LAST EDIT	09/10/2013

WHPacific
12100 NE 15th St, Ste 200
Seattle, WA 98101