



Seattle City Light

AMENDED DISTRIBUTION LINE EASEMENT AT KING COUNTY INTERNATIONAL AIRPORT

Presentation to Governance, Equity & Technology
Committee

Lynn Best & Timothy Croll | December 3, 2019

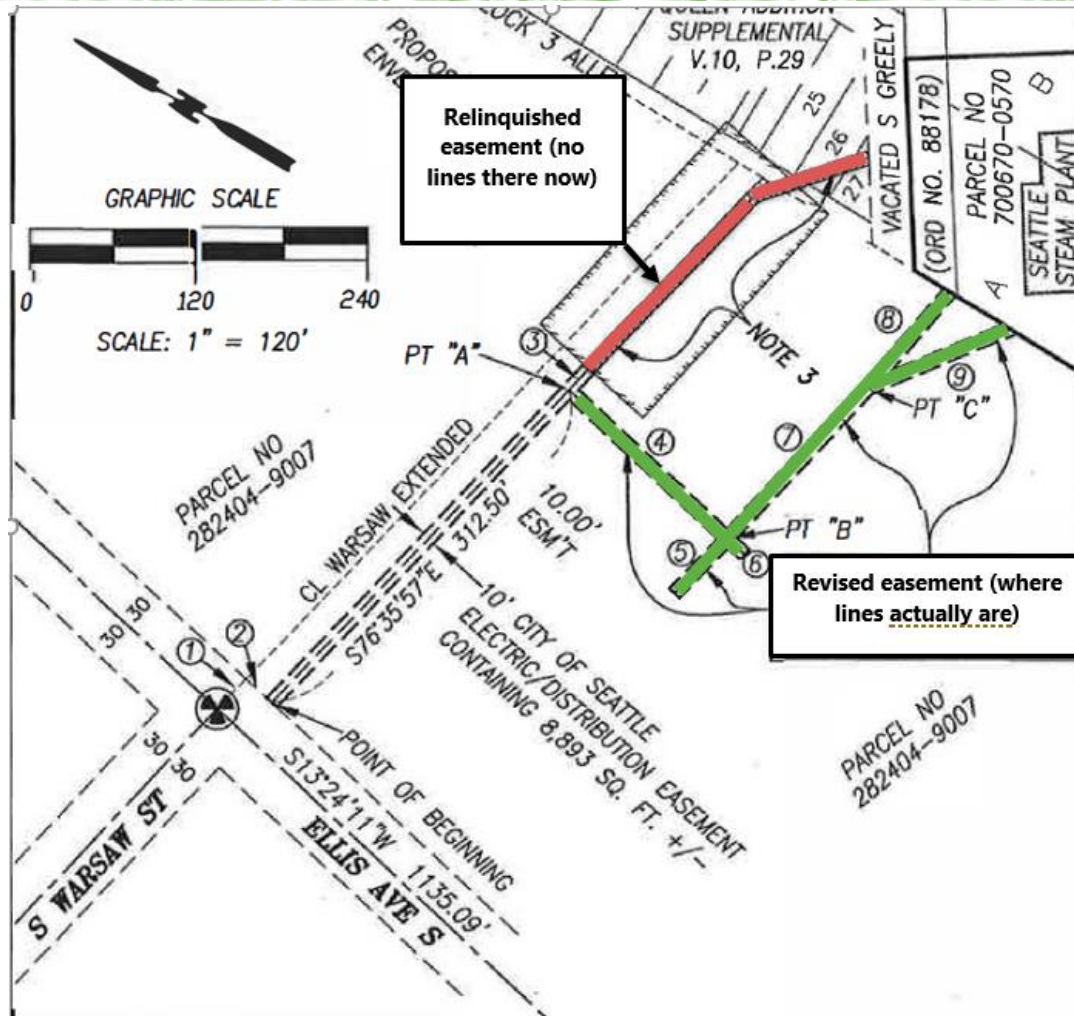
BACKGROUND

- In 1958, City Light obtained an easement from King County for an electrical distribution line at Boeing Field in Georgetown.
- Since that time, the utility lines have been relocated without an adjustment to the easement.
- King County is planning to construct a new building in that area and needs to revise the easement.

PROPOSED ORDINANCE

- Relinquishes the part of the old easement that is not being used.
- Revises part of the easement to reflect the present location of the distribution lines.
- No cost to either party.

SUMMARY



REASONS TO AMEND EASEMENT

- Legal rights should conform with the actual infrastructure.
- Clears the way for King County's project.
- Accommodating a customer and a partner governmental agency.

WIDER CONTEXT

- City Light is developing the Georgetown Steam Plant as a community asset/museum.
- City Light and King County International Airport are cooperating to develop an improved access for the community to the plant – legislation planned for 1 Q 2020.
- This ordinance is consistent with and supports this wider effort.

QUESTIONS?
