

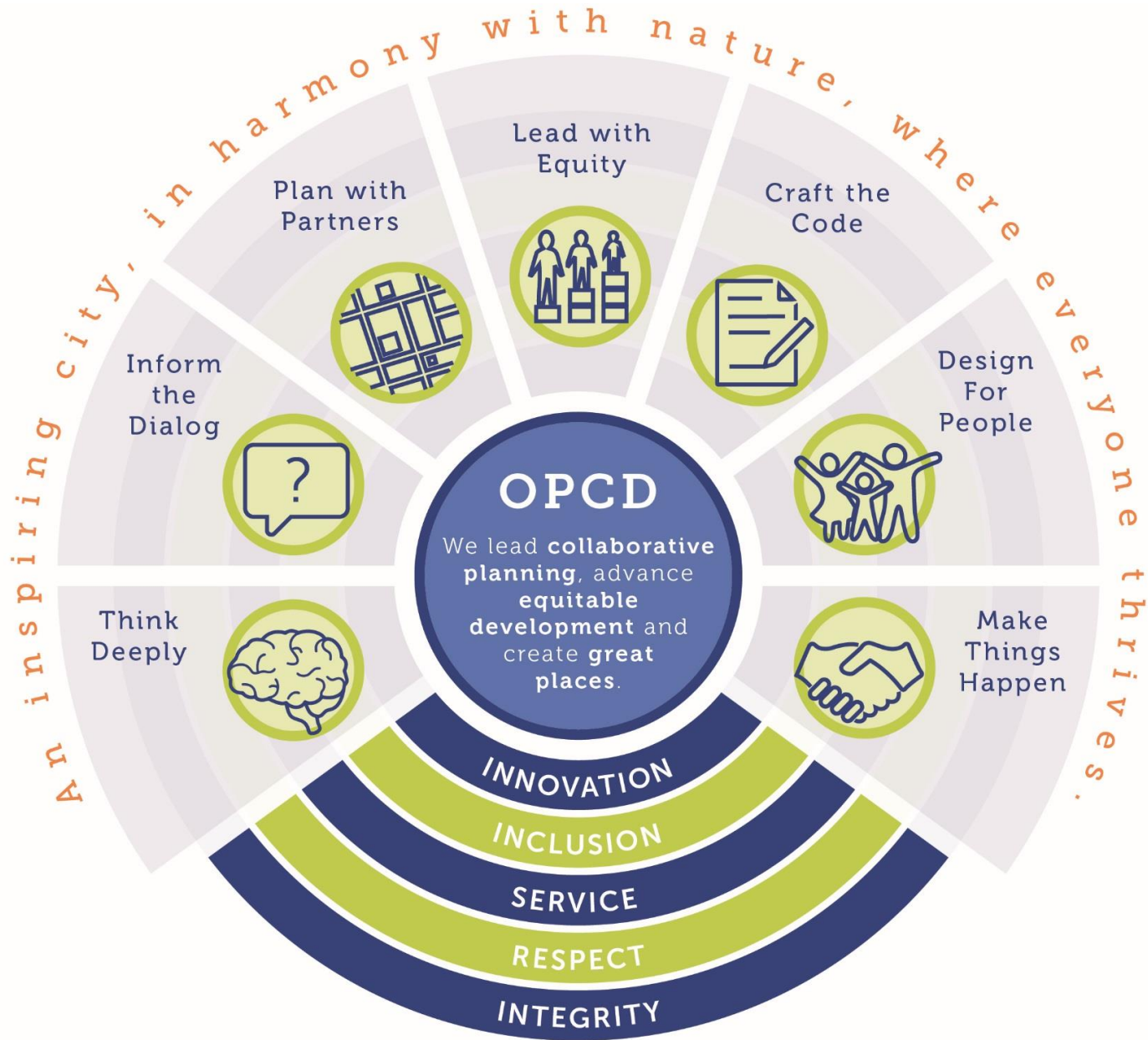
Office of Planning and Community Development's Equitable Development Initiative

January 2020

Community and Economic Development Committee EDI

Briefing:

- EDI & EDI Fund background
- Current Status/2020 Workplan



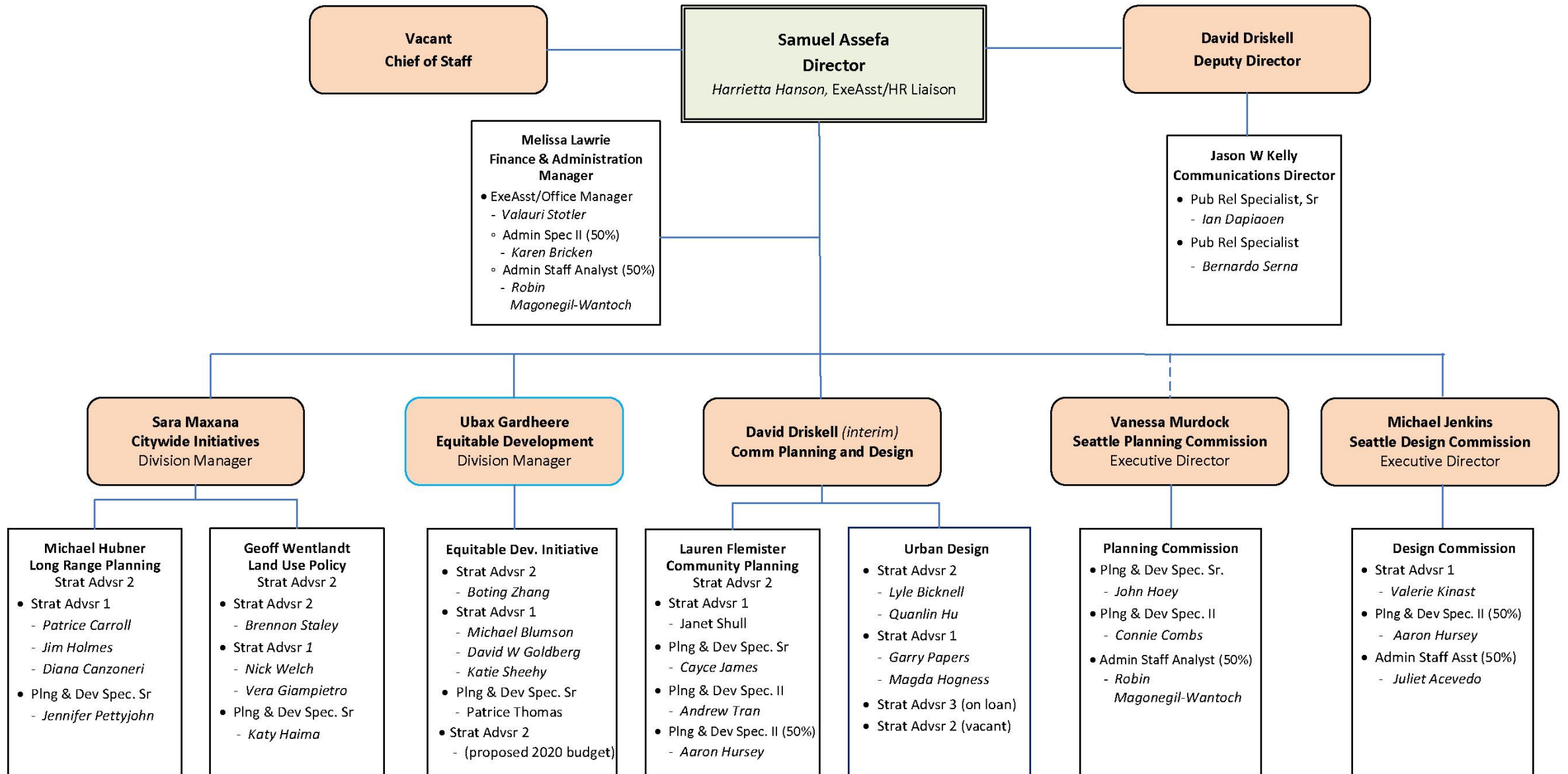
Vision

An inspiring city, in harmony with nature, where everyone thrives.

Mission

We lead collaborative planning, advance equitable development, and create great places.

Organization



OPCD Budget

	2020 Adopted Budget	
	Funding	FTE
Planning	\$29,543,063	38.0
Planning Commission	\$609,037	3.5
Design Commission	\$571,108	3.5
<i>Total</i>	<i>\$30,723,208</i>	<i>45.0</i>

2020 Work Plan

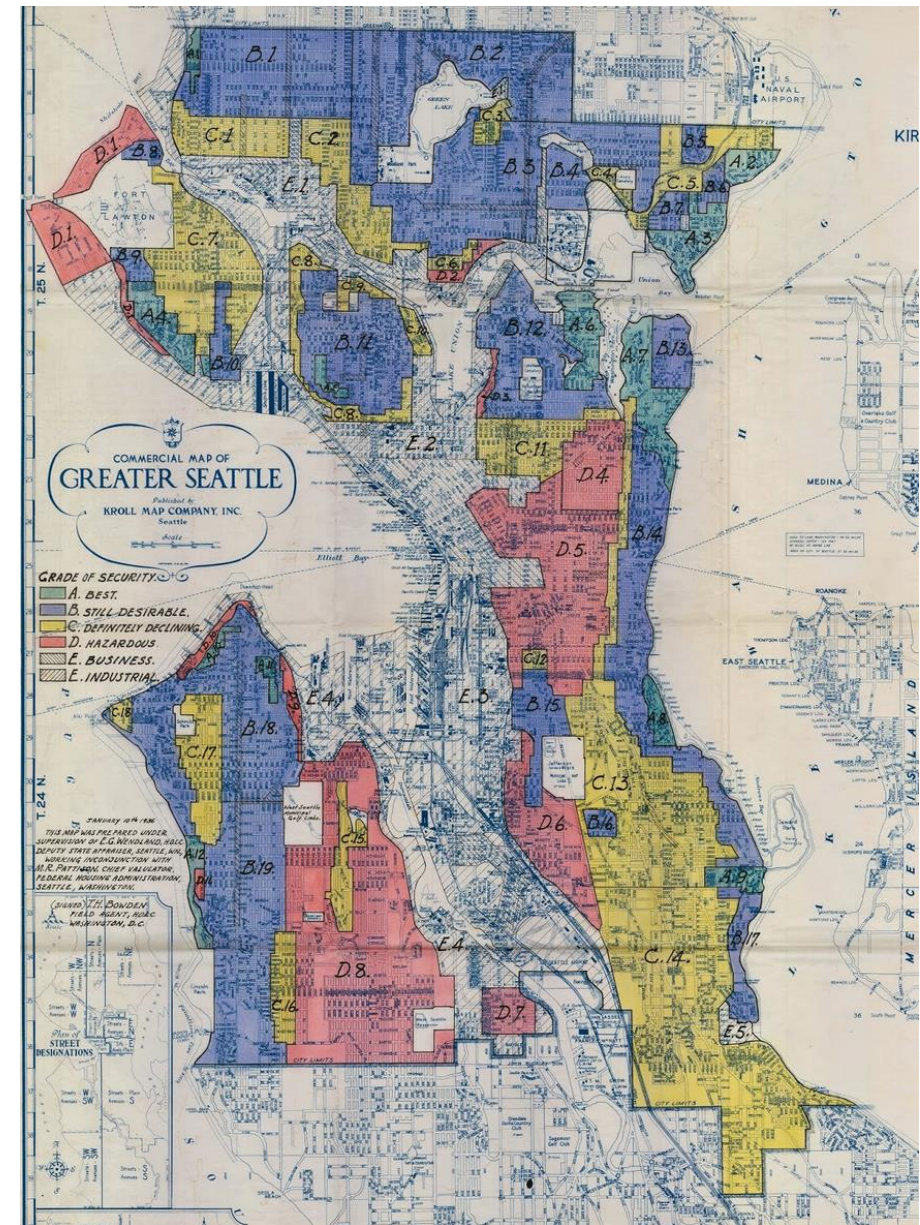
- Comprehensive Plan update
- Light rail expansion/station-area planning
- Industrial lands
- U District MHA implementation
- Housing Choices / AMIHAC
- Accessory Dwelling Units implementation
- Duwamish Valley Action Plan
- Crown Hill Community Plan
- I-5 lid feasibility study
- Outside Citywide
- Design guidelines / urban design
- Demographics and GIS analysis
- Demographics and GIS analysis
- Equitable Development Initiative

Equitable Development Initiative

- **Equity Analysis to inform the growth strategy in the Comprehensive Plan**
- **Race and Social Equity Goals and Policies in the Comprehensive Plan**
- **Equitable Development Implementation Plan**
- **Equitable Development Fund for Community-driven Projects**

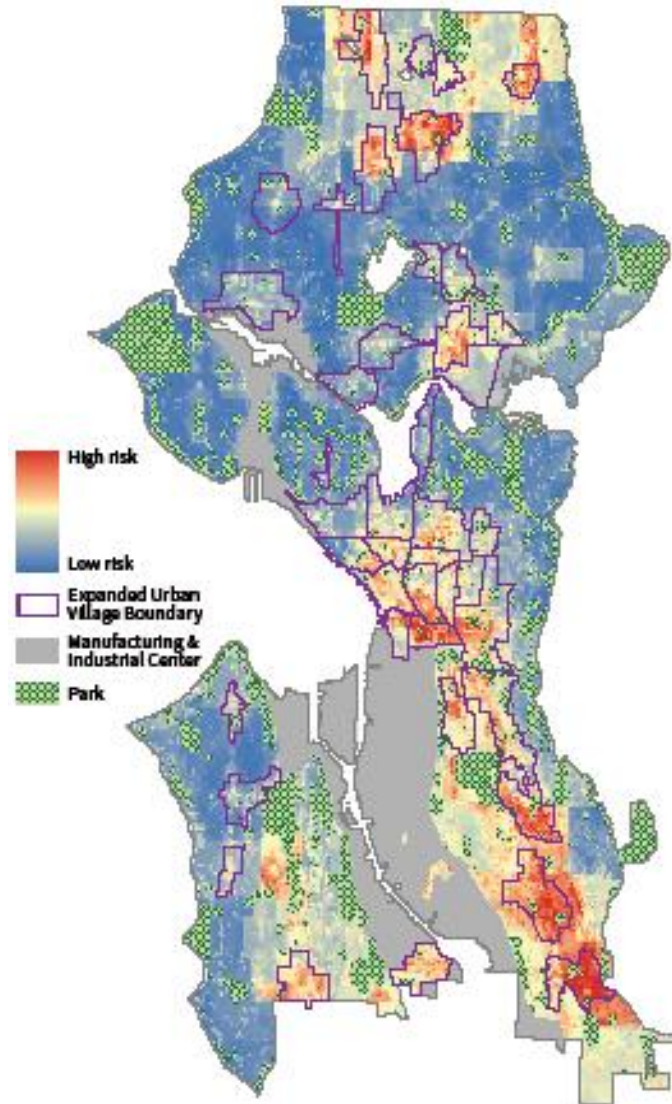
Redlining in Seattle

Investment decisions made by previous generations contributed to the inequities communities experience today.

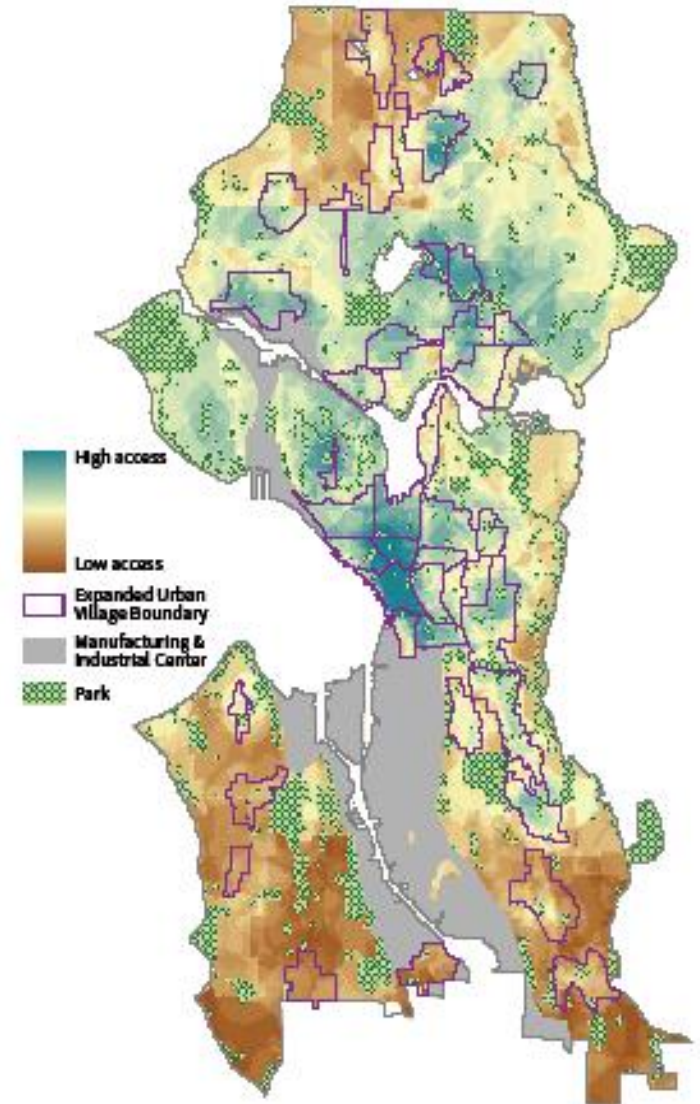


Equity Analysis of Seattle's Growth

- **Displacement Index**
 - ✓ Vulnerability
 - ✓ Amenities
 - ✓ Development capacity
- **Access to Opportunity Index**
 - ✓ Education
 - ✓ Economic Opportunity
 - ✓ Transit Access
 - ✓ Civic Infrastructure



Displacement Risk Index



Access to Opportunity Index

Equitable Development Initiative

Growth with Equity

- Prioritize marginalized populations
- Race and social equity lens
- Address displacement
- Distribute the benefits and burdens of growth equitably
- Increase opportunities for low-income households
- Economic and ownership opportunities



Equitable Development Framework: Strong People, Strong Communities

Strategies to achieve community stability and resilience in the face of displacement and great neighborhoods with access by all:



Advance economic mobility and opportunity



Promote transportation mobility and connectivity



Prevent residential, commercial, and cultural displacement



Develop healthy and safe neighborhoods



Build on local cultural assets



Provide equitable access to all neighborhoods

Equitable Development Initiative Monitoring

- Provide public with info on how Seattle is doing in achieving our equitable development goals
- Provide community stakeholders and organizations with data they can use in their work to advance race and social equity
- Provide information to aid City in making policy, planning, and investment decisions
such as **Mayor's Executive Order to mitigate displacement** or data for **Racial Equity Toolkit** for the Comprehensive Plan Update



Two types of indicators, phased launch

- 1) **Community indicators** to gauge progress toward equitable development and reduction of racial disparities
- 2) **Indicators of displacement and heightened displacement risk** to help the City respond nimbly to reduce and mitigate displacement.

Equitable Development Monitoring Program

Phase 1: Community Indicators

Phase 2: Heightened Displacement Risk Indicators (HDRI)

Equitable Development Initiative Fund

Investment in targeted place-based strategies

FUNDING

- \$16M from City Plaza sale and
- \$430,000 CDBG annual through 2020
- \$5M annually from Short-Term Rental tax
- \$15 Million from sale of Mercer Mega Block

WHY

Address historic and market inequities through investing in projects and programs that mitigate displacement and increase access to opportunity.

HOW

- Community Capacity Development
- Project Development

EDI Project List By Funding Round

2018 Funding Round	2019 Funding Round
African Women Business Alliance	Byrd Barr Place
Africatown Community Land Trust	Central Area Youth Association*
Black and Tan Hall	Cham Refugees Community
Chief Seattle Club	Chief Seattle Club*
Duwamish Valley Affordable Housing Coalition	Duwamish Tribal Services
Ethiopian Community of Seattle	Hope Academy*
Filipino Community in Seattle	Lake City Collective
Refugee and Immigrant Family Center	Friends of Little Saigon*
United Indians of All Tribes Foundation	Queer the Land
West African Community Council	Rainier Valley Midwives
	Rainier Beach Action Coalition*
	Wing Luke Museum

Original Financial Strategies Projects

Landmark Project – Friends of Little Saigon

Multicultural Community Center – Multicultural Coalition

Othello Square – HomeSight

Rainier Beach Food Innovation Center – Rainier Beach Action Coalition

William Grose Center – Africatown/Black Community Impact Alliance

Community Wealth and Ownership – Project Examples

- Duwamish Longhouse



- Rainier Beach Food Innovation Center



Community Wealth and Ownership – Project Examples

- Black and Tan Hall



- Midtown Plaza/Liberty Bank



Community Wealth and Ownership – Project Examples

- African Women Business Alliance



- Lake City Collective



2020 EDI Workplan

- **\$15 Million from Mercer Mega Block**
- **Finalize Permanent Advisory Board**
- **Coordinate Strategic Investment Fund**
- **2020 EDI Fund cycle**
- **EDI Monitoring Phase 1 and 2 Reports**
- **Provide contract Management and Technical Assistance for 25 EDI projects**
- **Racial Equity Analysis for the next major Comp Plan update**

Questions?

- Samuel Assefa – Samuel.Assefa@seattle.gov
- Ubax Gardheere – Ubax.Gardheere@seattle.gov