



Seattle Indian Health Board

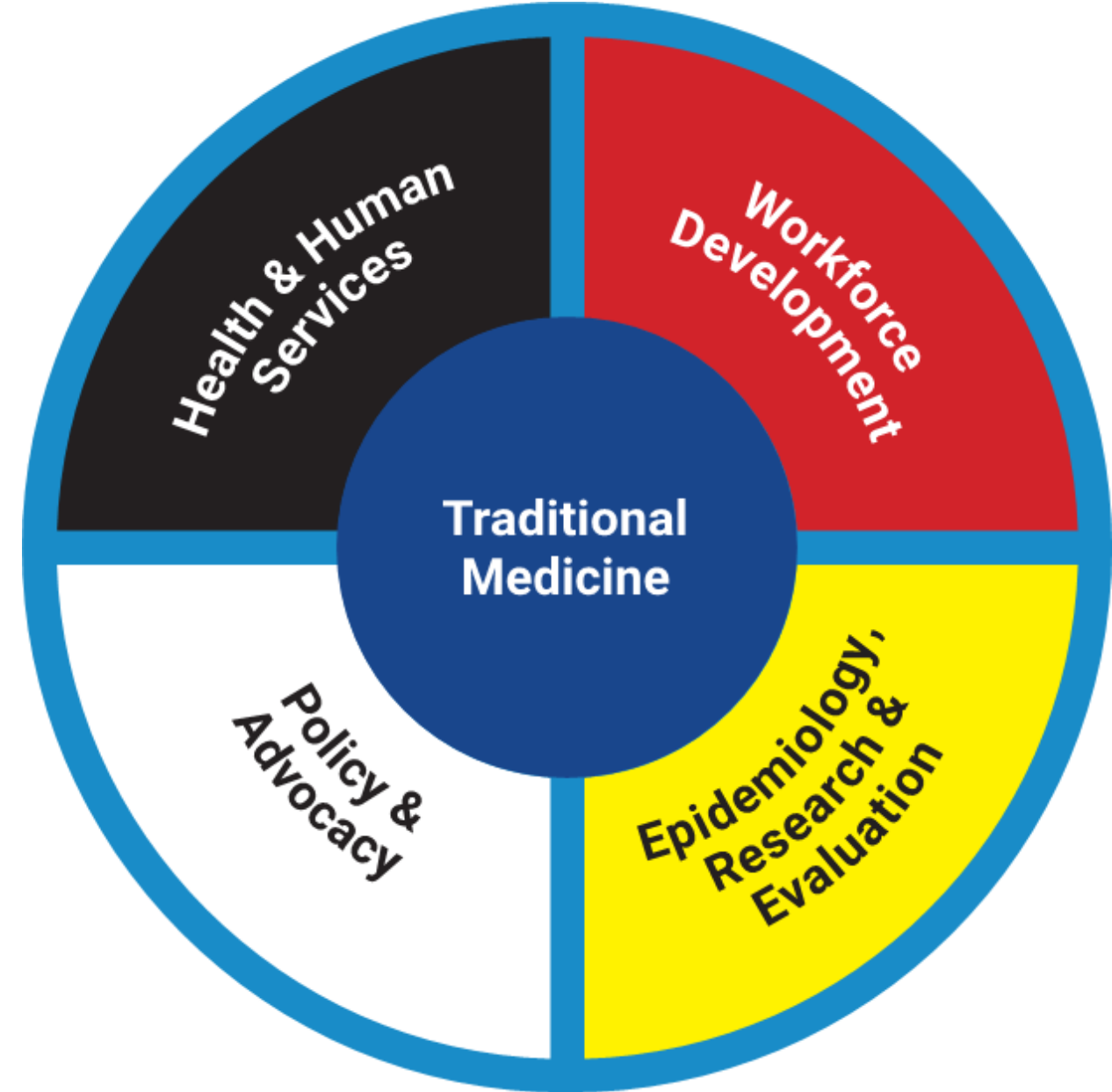
Cultural healthcare and human services
for our people today. Advocacy and data
research for our people of the future.



Seattle Indian Health Board
For the Love of Native People

611 12th Avenue South
Seattle, WA 98144
www.sihb.org

Indigenous Knowledge Informed Systems of Care



A photograph of three women laughing together, overlaid with a dark semi-transparent filter. The woman on the left is wearing a large straw hat and glasses. The woman in the center has dark hair and glasses. The woman on the right has long brown hair and is wearing a floral patterned shirt. The background is a wooden fence.

About Urban Indians

71% of American Indian or Alaska Native people live in urban areas, including about 45,000 people in King County.

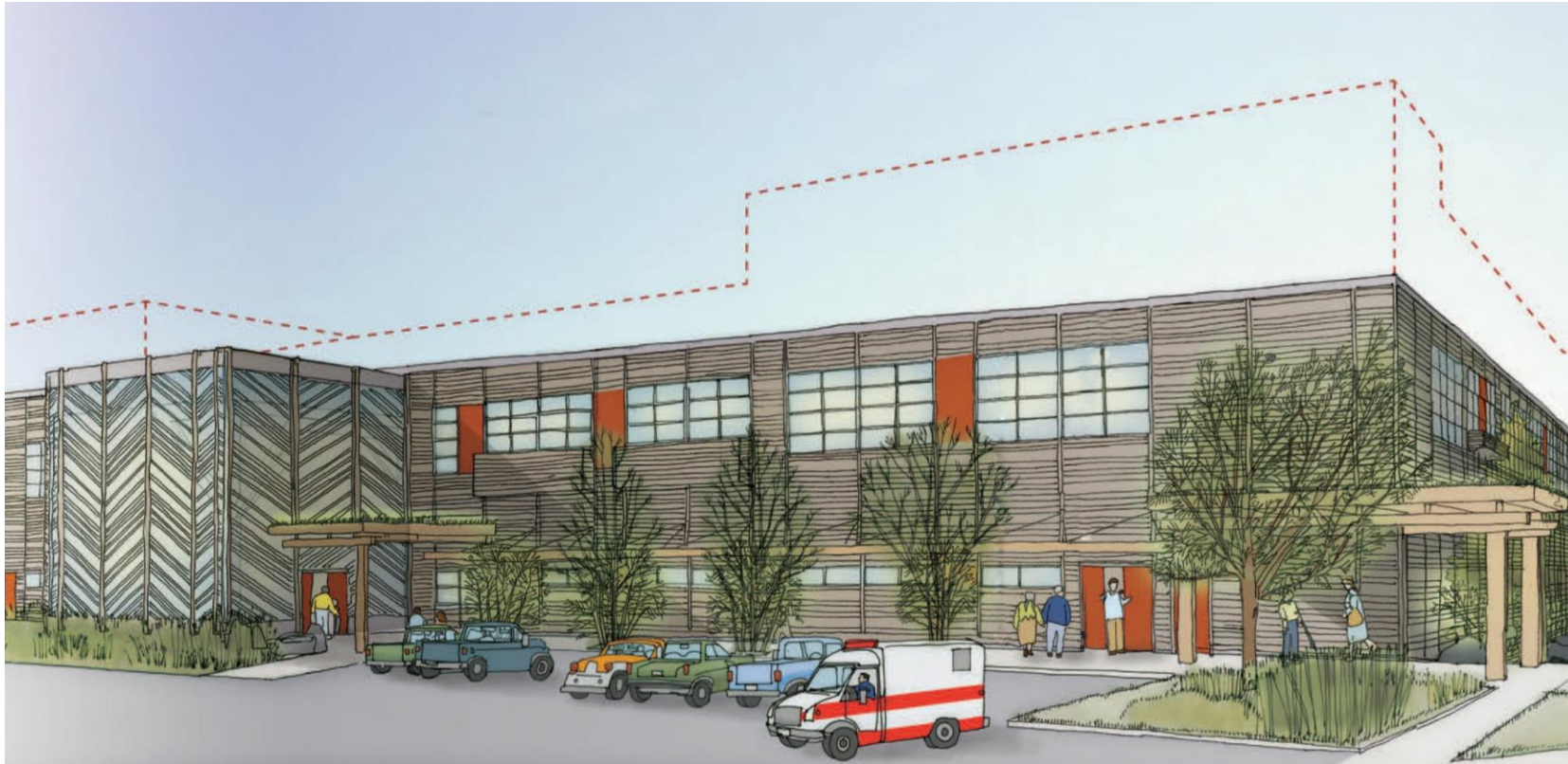
71%

By the Numbers

- ▶ **5,354** patients served
- ▶ **200+** employees
- ▶ **417** monthly Traditional Indian Medicine encounters
- ▶ **140** elders served per month
- ▶ **34** youth enrolled in education program

Creating a space for our relatives and community

A Patient-Centered Cultural Facility

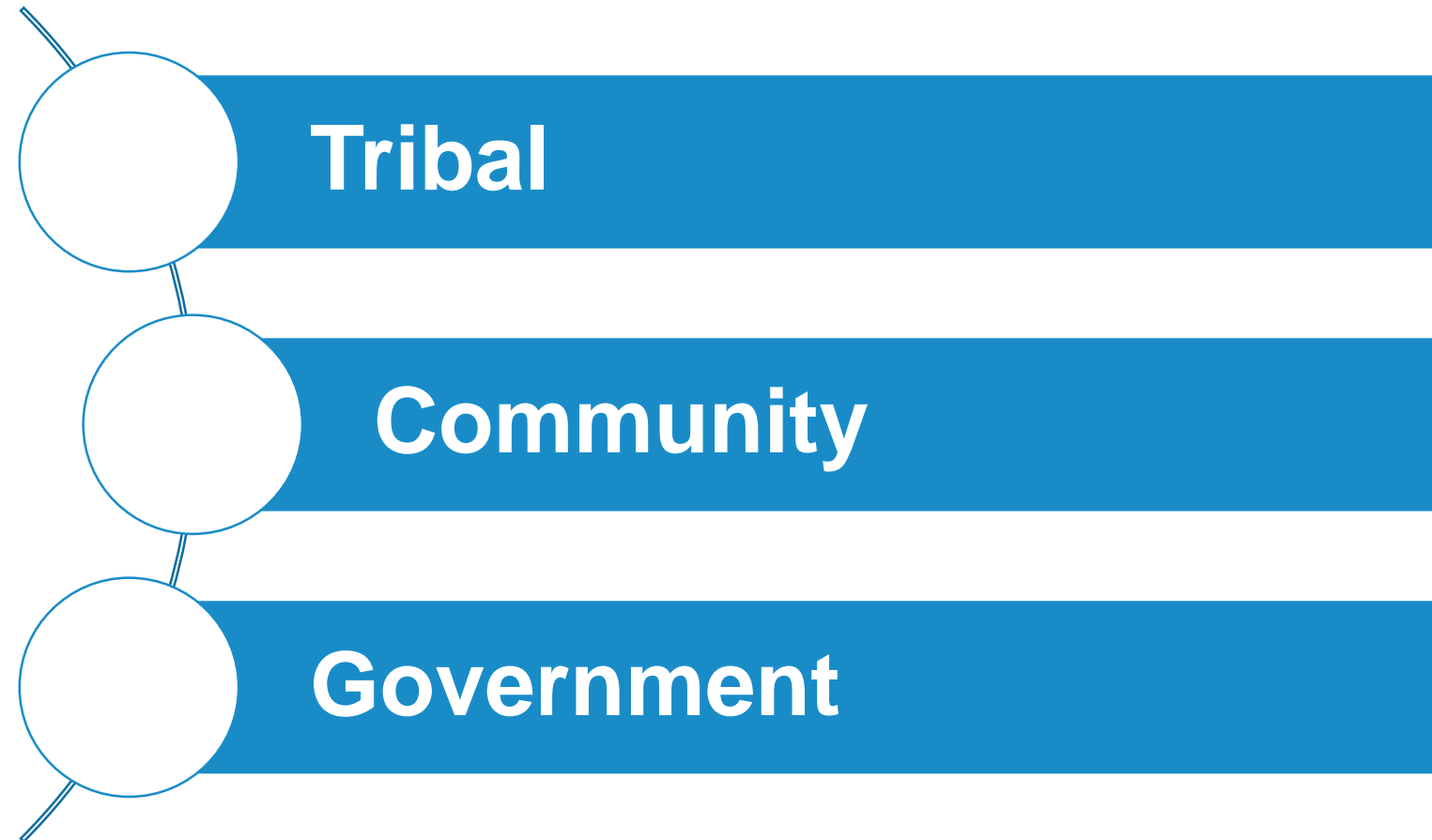


Thunderbird Relocation and Expansion

- Expand from 65 beds to 92 bed capacity
- Options for pregnant women and parents
- On-site Traditional Indian Medicine services
- Tribal partnerships

Policy Platform

We work across the **local**, **state**, and **national** levels with our partners.





Violence Against Native Women and Girls

OUR BODIES, OUR STORIES

94% had been raped or coerced in their lifetime.

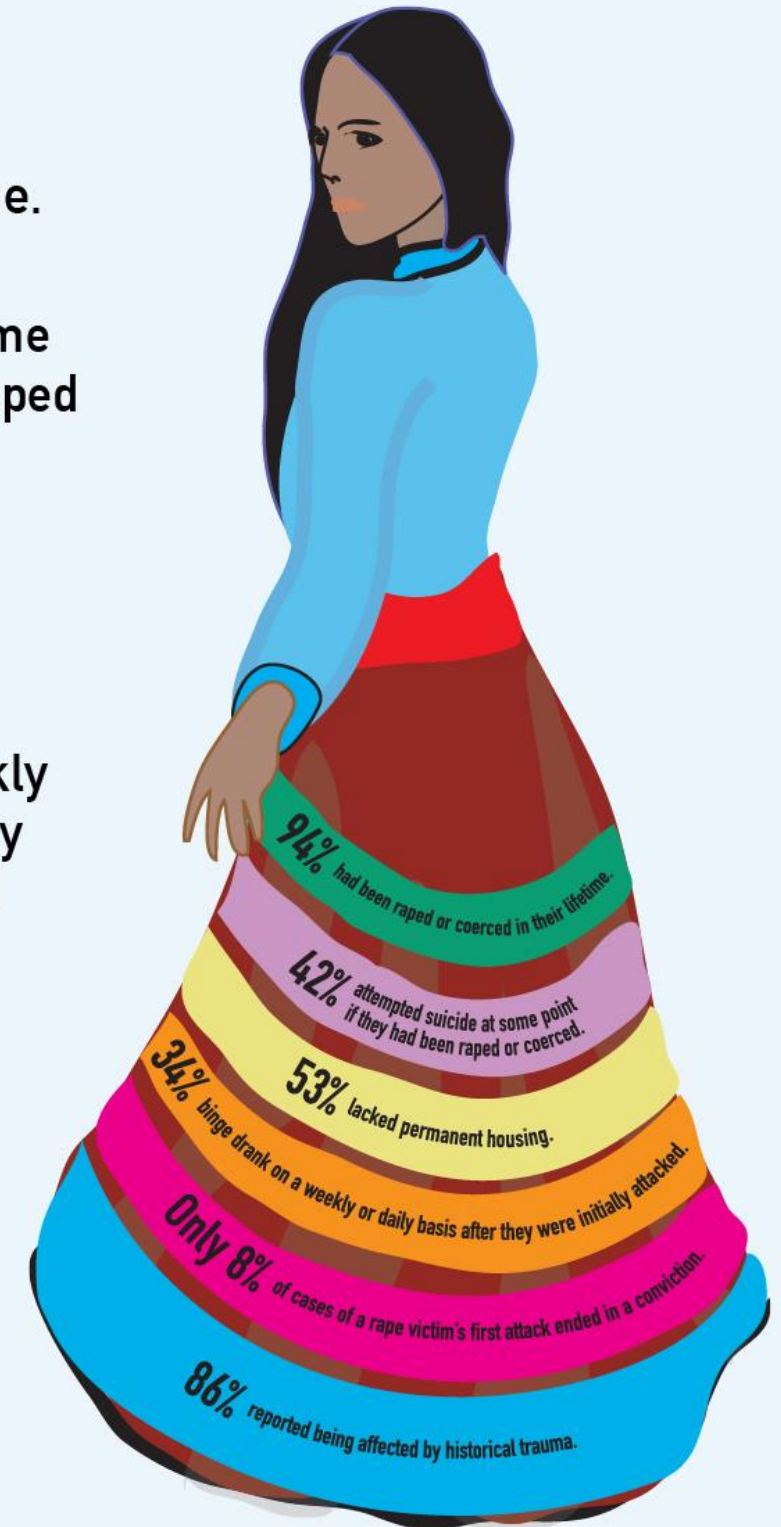
42% attempted suicide at some point if they had been raped or coerced.

53% lacked permanent housing.

34% binge drank on a weekly or daily basis after they were initially attacked.

ONLY 8% of cases of a rape victim's first attack ended in a conviction.

86% reported being affected by historical trauma.



**THIS IS AN UNDERCOUNT.
WE KNOW THERE ARE
MORE VICTIMS.**

506 MMIWG cases were identified
across 71 selected urban cities

128 were cases of missing
Indigenous women

280 were cases of murdered
Indigenous women

98 were cases with an
“unknown status”

29 The median age of
MMIWG victims

MISSING AND MURDERED *INDIGENOUS* WOMEN & GIRLS





THE INVISIBLE 153

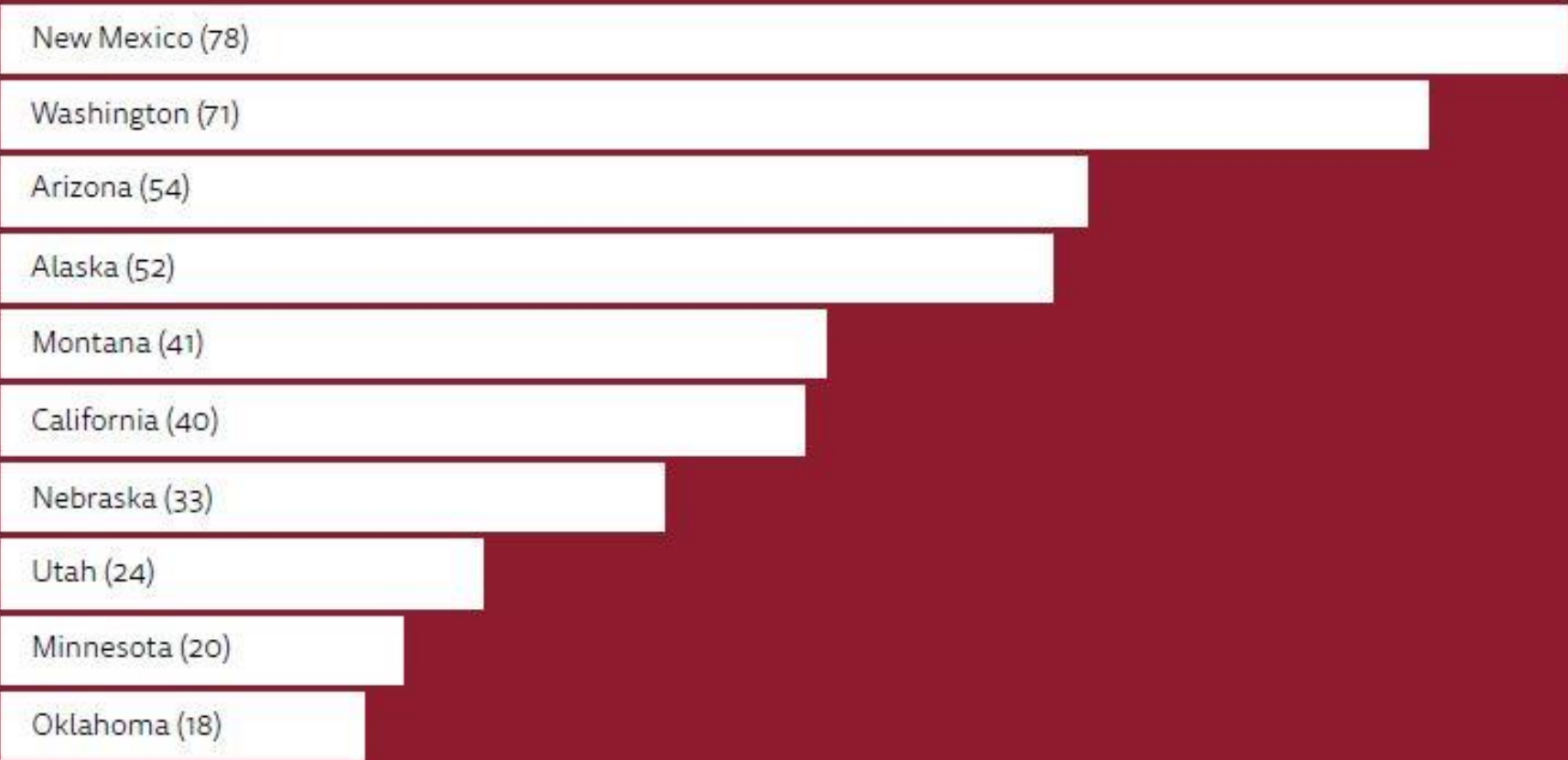
Number of cases
identified by UIHI that
currently **do not exist**
in law enforcement
records.

TOP 10 CITIES WITH HIGHEST NUMBER OF MMIWG CASES



See Appendix for data from all 71 cities surveyed.

TOP 10 STATES WITH HIGHEST NUMBER OF MMIWG CASES



Impact

Since we released our report, we have been involved in local, state, and federal policy efforts to address MMIWG.

- **2** federal bills – Savanna's Act and Not Invisible Act
- **\$250,000** budget proviso to convene a MMIWG statewide taskforce
- **Resolution 31900** – City of Seattle



The Future of Community- led MMIWG policy

MMIWG Local Policy Efforts

**JUSTICE FOR
MISSING AND
MURDERED
INDIGENOUS
WOMEN &
GIRLS**



RSVP SEPT 9, 2019 @ 2PM

Resolution 31900

- ▶ Address City data collection and reporting practices that inform and document the MMIWG crisis;
- ▶ Engage tribal and urban Indian communities in meaningful tribal consultations and confers; and
- ▶ Invest in Indigenous and community-led approaches to building community trust, addressing data challenges, and supporting Native communities impacted by violence.

MMIWG State Policy Efforts

The Data

- The rate for missing Native women in Washington State is **4.2 times higher** than that for white women

Community Defined Solutions

- Tribal and urban Indian communities have called for the formation of a **community-led statewide taskforce** to analyze and provide recommendations to address the MMIWG crisis

FY21 Supplemental Budget Ask

- \$250,000 budget proviso to convene a **MMIWG Statewide Taskforce**

Thank you

Contact Information:

Esther Lucero (Diné)
Chief Executive Officer
estherl@sihb.org
(206) 324-9369 Ext. 1103

Aren Sparck (Cup'ik)
Government Affairs Officer
arens@sihb.org
(206) 324-9360



**Seattle Indian Health
Board**
For the Love of Native People
611 12th Avenue South
Seattle, WA 98144
(206) 324-9360
www.sihb.org