

Seattle Community Safety Initiative

Public Safety and Human Services
Committee Meeting

January 26, 2021

Human Services Department



City of Seattle

Overview

1. Introductions
2. Background
3. Seattle Community Safety Initiative (CSI):
 - Partners
 - Model
 - Components
 - Performance Measures



Introduction

- Purpose of Seattle CSI:

To build and strengthen community connections and neighborhood safety for Black and Brown neighborhoods in Seattle and South King County.



Background

- The “Perfect Storm” of 2020
- Emergence of Black and Brown grassroots leadership
- The will to work together #MoveTogether



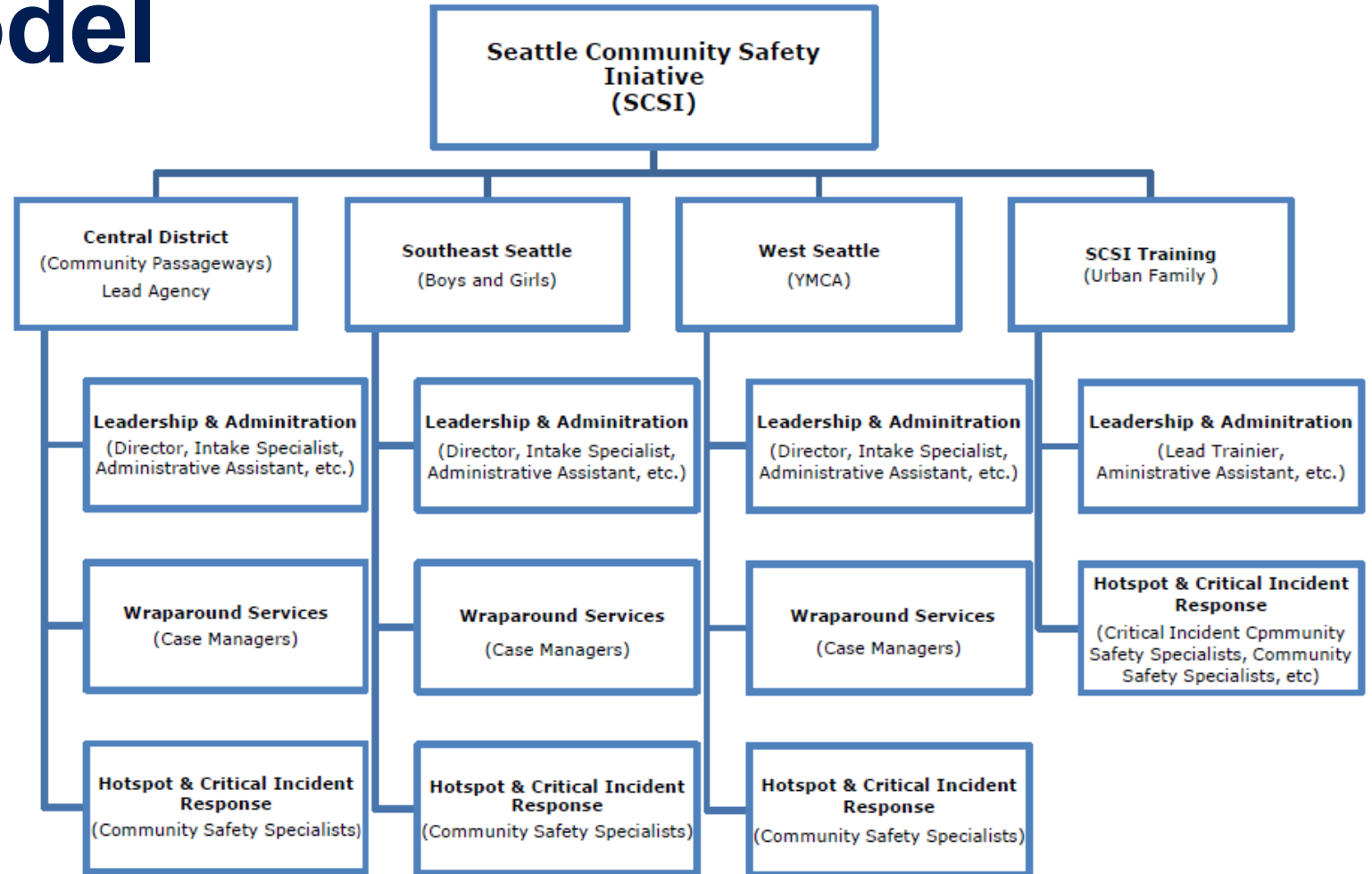
Seattle CSI Partners

- Shared vision of safety for the City and County
- Trusted Black and Brown leadership
- Credible and experienced organizations



Seattle CSI Model

- Crisis Incident Response
- Wrap-around Services
- Follow-up
- Outreach and Recruitment
- Continuous Training and Knowledge Sharing



Seattle CSI Key Components



Contract Performance Measures

- A. 300–750 unduplicated participants complete intake
- B. 210-525 unduplicated case management (CM) participants create a service/goal plan
- C. 150-369 unduplicated CM participants complete at least one goal
- D. 105-258 CM participants report decreased involvement in violence and general crime and/or report feeling safe
- E. 55 CM program referrals received from community sources

Contract Performance Measures Cont'

- F. 40 responses to hotspot/critical incidents dispatched by community
- G. 24 systems coordination meetings with Hub leadership
- H. 10 systems coordination meetings with Seattle Police Department
- I. Monthly staff trainings across all Hubs

Question and Answer

