

# Vacation of Portion of Diagonal Ave S

Presentation to City Council

Transportation and Utilities Committee

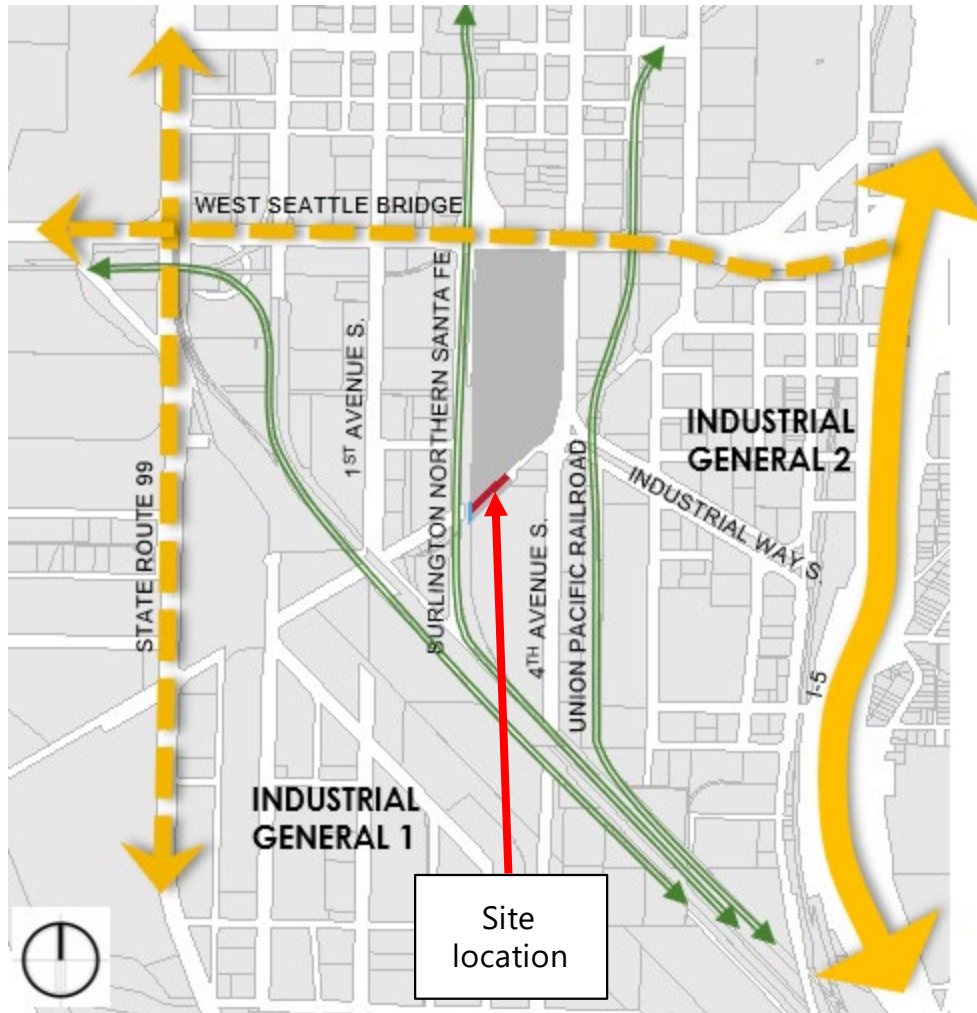
July 21, 2021



**Seattle City Light**

WE POWER SEATTLE

# Vacation Location: 4101 Diagonal Ave South



# Vacation Site Overview

---



# Vacation/No Vacation Comparison

---

|                    | <b>No-Vacation</b>  | <b>Vacation</b>  |
|--------------------|---|--|
| City Light Use     | <ul style="list-style-type: none"><li>• Keep street use permit</li><li>• Low investment / no improvements</li></ul> | <ul style="list-style-type: none"><li>• More efficient operation</li><li>• Investments in upgrades</li></ul> |
| SPU Infrastructure | <ul style="list-style-type: none"><li>• Sewer &amp; drainage lines &amp; future water main in ROW</li></ul>         | <ul style="list-style-type: none"><li>• Utilities preserved</li></ul>  |
| Public Benefit     | <ul style="list-style-type: none"><li>• None</li></ul>  | <ul style="list-style-type: none"><li>• Off-Leash Area and trail segment in Georgetown</li></ul>             |

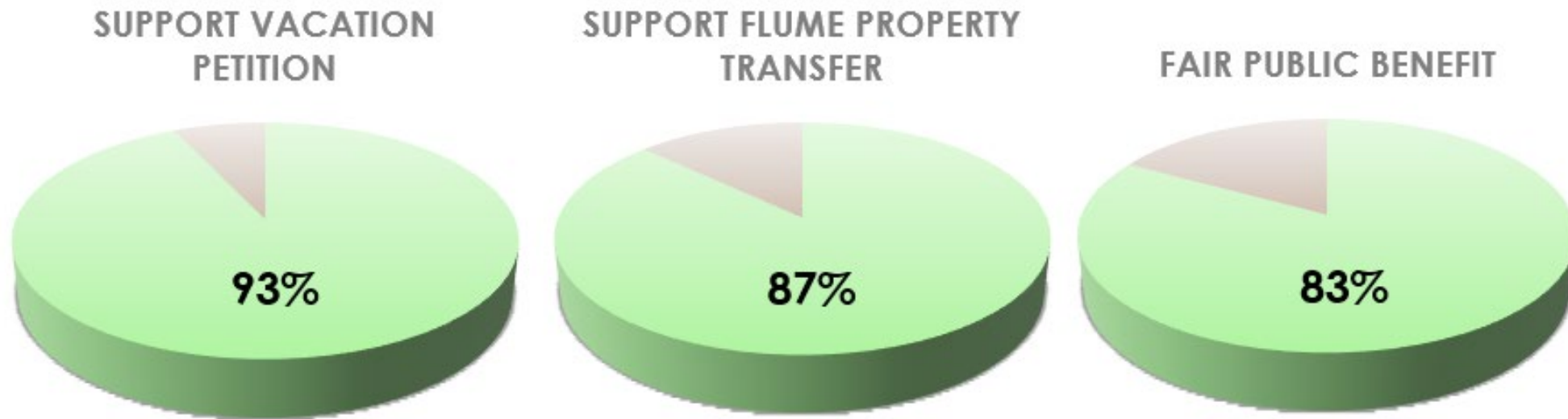
## Carried out DON-approved Community Engagement Plan

---

- Mass mailing
- Flyers in multiple languages
- Door to door
- 2 public meetings
- Met local groups and 4 community leaders
- Social media and website
- Survey

# Survey Showed Very Strong Community Support

---



## Community Engagement Results

---

- Strong Georgetown community support for vacation and public benefit of Off-Leash Area and trail segment
- Community-driven project improvements:
  - Trees
  - Water to the site
  - Lighting
  - Full funding secured

# Public Benefit: Off-Leash Area and Trail Segment in Georgetown

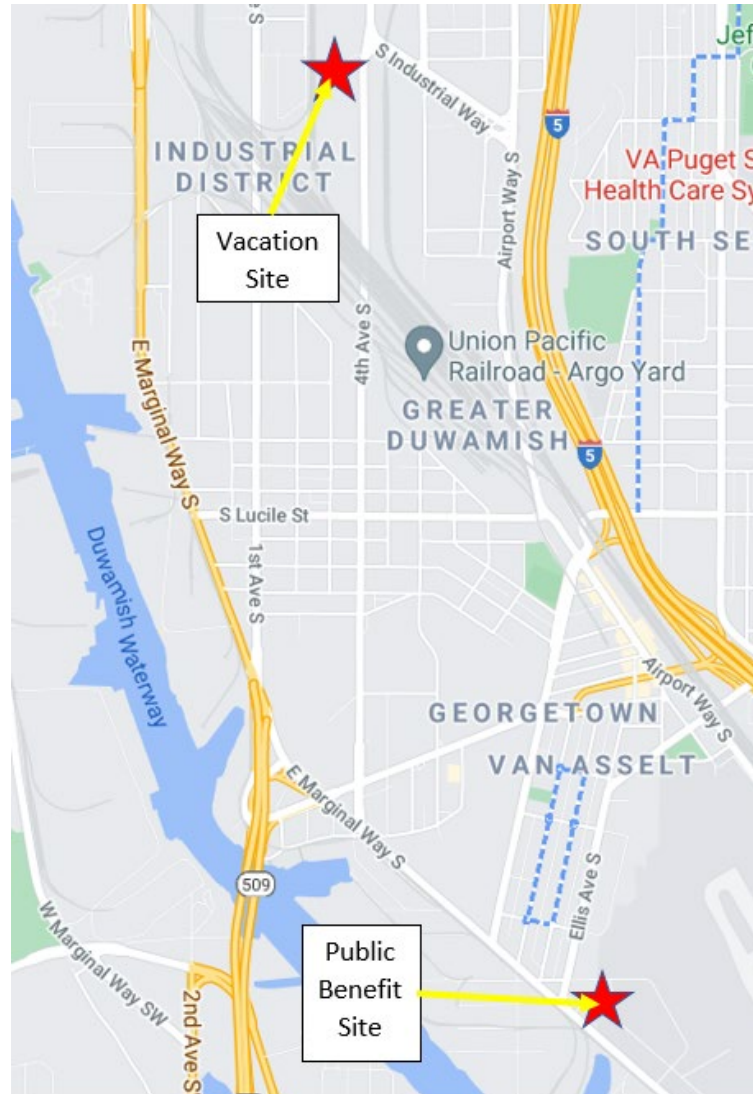
---





# Vacation Site & Location of Public Benefit

---





# Segment of Georgetown – South Park Connection

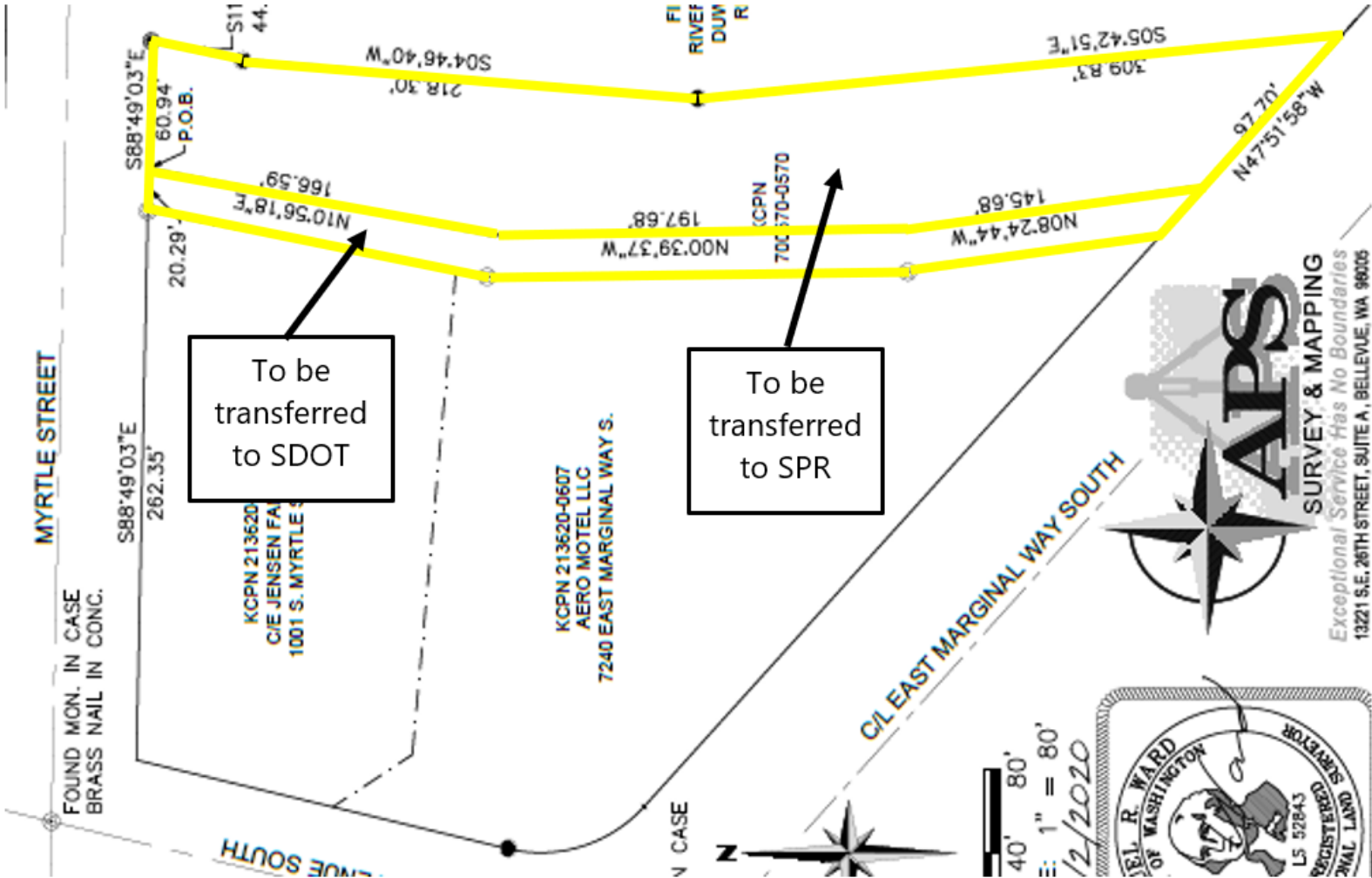


Property to be transferred

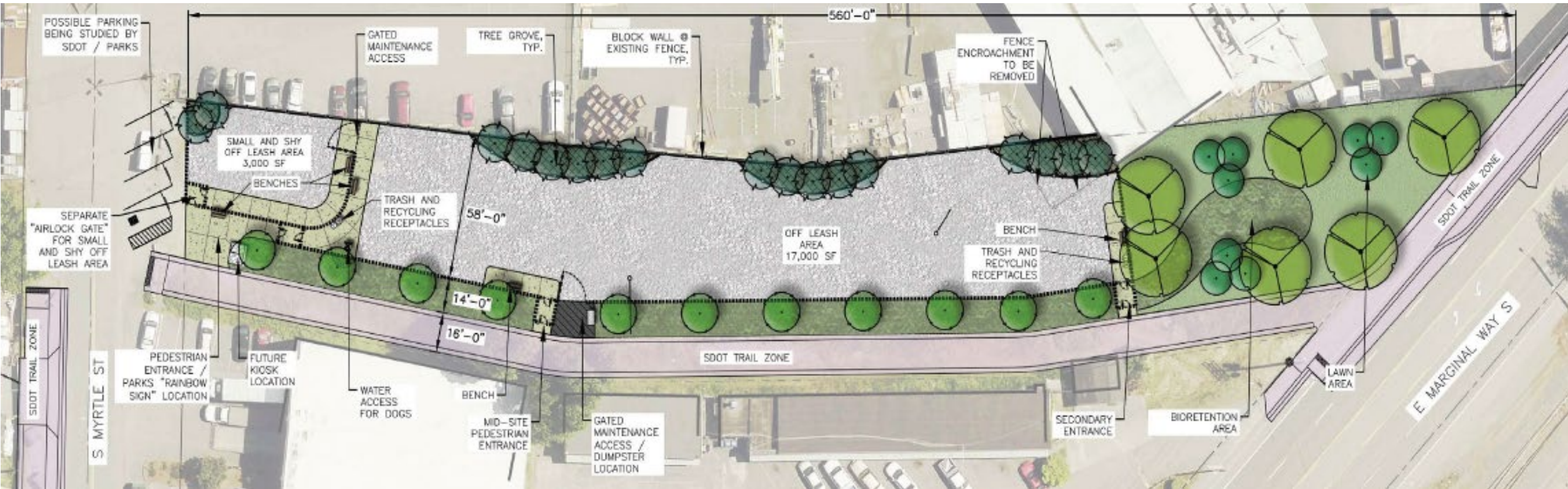
# Public Benefit Site Overview



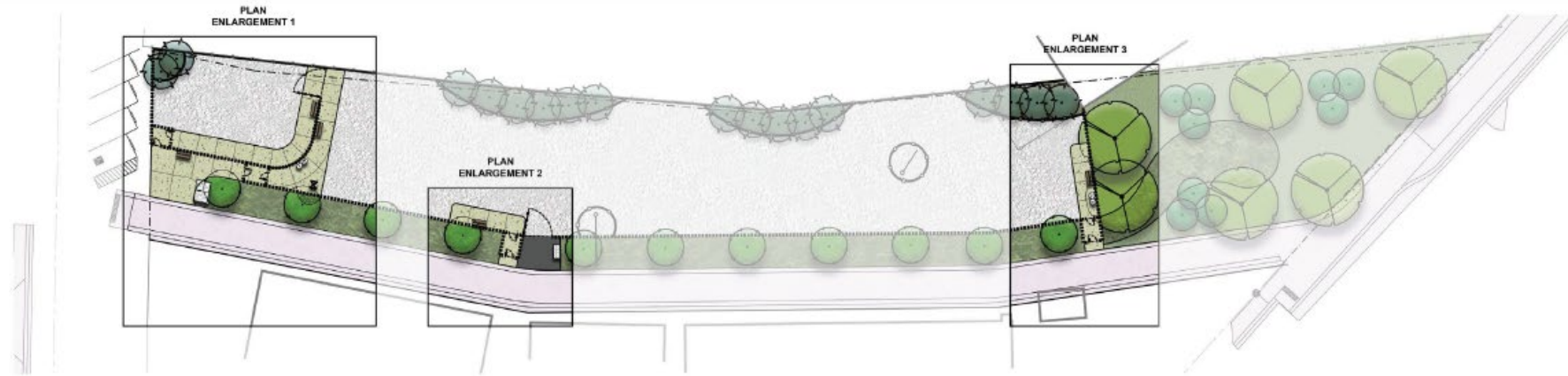
# Parcels to be Transferred



# Off Leash Area & Trail Segment



# OLA Design Details



**Plan Enlargements**

# Proposed Site Furnishings



Benches



Bike Racks



Water for Dogs



Airlock Gate



Parks Rainbow Sign



# Segment of Georgetown – South Park Connection



Property to be transferred

Example of shared use path design:



## Milestones

---

- Ordinance to transfer off-leash area/trail property from City Light to Parks and SDOT to be considered in the near future
- Plan to complete design this year
- Construction planned for next year

# Public Benefit Components and Departmental Responsibilities

| Public Benefit Element   | Department Obligations on Cost Sharing |        |          |          |
|--|--|--------|----------|----------|
|  | SPR                                    | SDOT   | SCL      | Total    |
| Site preparation   |  |        | \$480k   |          |
| Off Leash Area: <ul style="list-style-type: none"> <li>• Pedestrian access,</li> <li>• Benches,</li> <li>• Water to site,</li> <li>• 1/2 stormwater treatment</li> </ul>                             | \$400k                                 |        | \$195k   | \$595k   |
| Bike and Pedestrian Trail: <ul style="list-style-type: none"> <li>• Street improvements,</li> <li>• Lighting,</li> <li>• Trees,</li> <li>• 1/2 stormwater treatment</li> </ul>                       |  | \$400k | \$1.283M | \$1.683M |
| Total development costs  | \$400k                                 | \$400k | \$1.958M | \$2.758M |
| Property transfer: <ul style="list-style-type: none"> <li>• Approx.46,338 sq ft</li> <li>• Property to Parks for Off Leash Area</li> <li>• Property to SDOT for Bike and Pedestrian Trail</li> </ul> |  |        | \$1.854M | \$1.854M |
| Grand total  | \$400k                                 | \$400k | \$3.812M | \$4.612M |

# THANK YOU

---



**Seattle City Light**