

A low-angle, upward-looking shot of a white and blue Sound Transit train at a station platform. The train's windows reflect the sky and platform. A teal graphic element, resembling a stylized 'S' or a wave, is overlaid on the train's side. The text 'Seattle City Council' and 'April 11, 2016' is overlaid on a dark grey band across the middle of the image. The 'SOUNDTRANSIT' logo is visible on the blue lower section of the train.

Seattle City Council

April 11, 2016

SOUNDTRANSIT

Sound Transit Ballot Measures

1996



"Sound Move"

Key Projects

- 16 Miles of Central Link Light Rail
- 75 Miles of Sounder Commuter Rail
- 18 Express Bus Routes
- Operations & Maintenance Facility



2008



"ST2"

Key Projects

- 35 Miles of New Link Light Rail
- Sounder Expansion
- Express Bus Expansion
- System Access Improvements
- Operations & Maintenance Satellite Facility
- Plans for ST3



2016

"ST3"

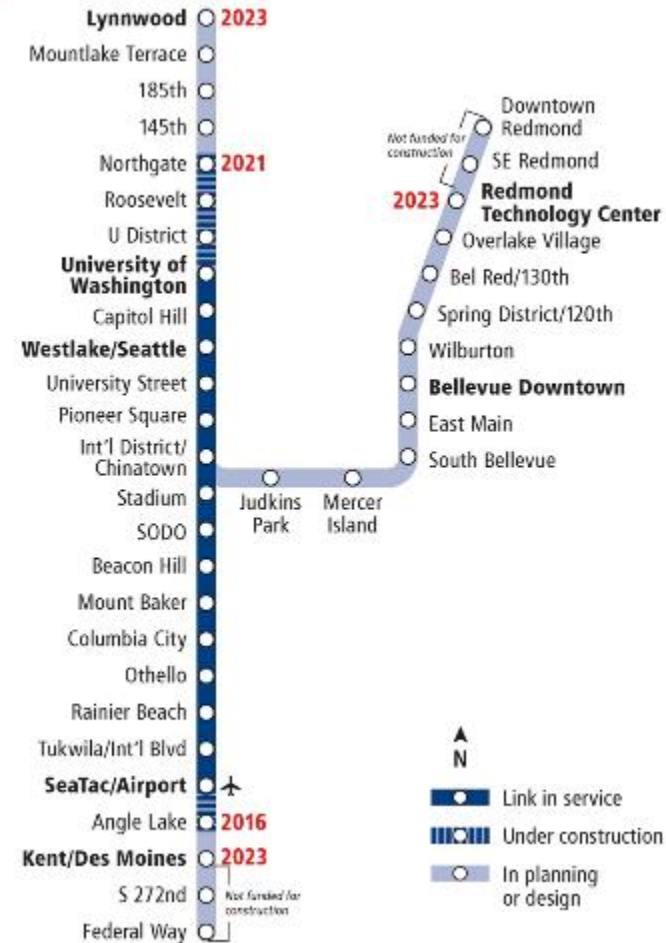
Key Projects

?

Regional Link light rail expansion



By 2023, Puget Sound will have 50+ miles of light rail, with 30+ stations, directly connecting 11 cities



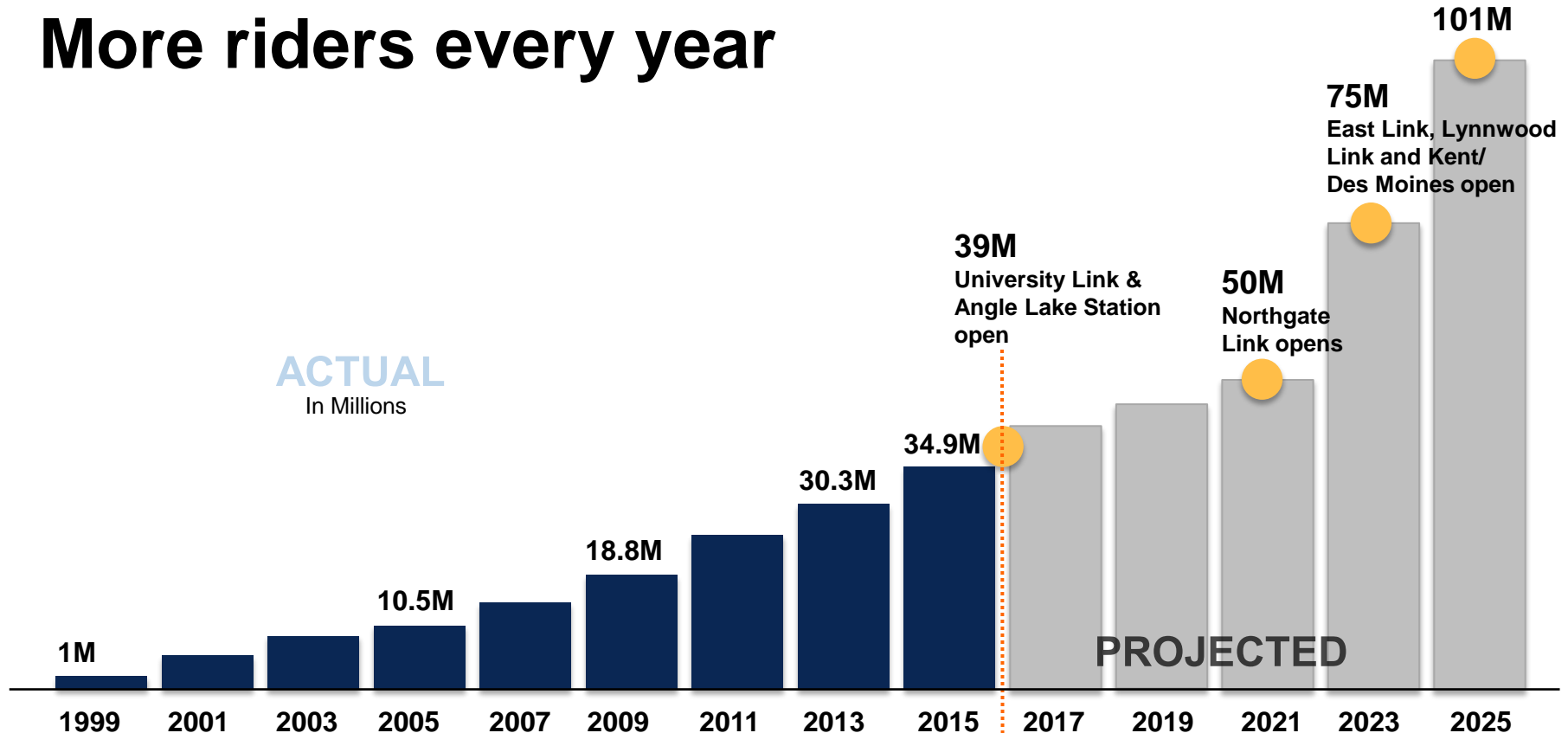
University Link Now Open!



Opening Ridership

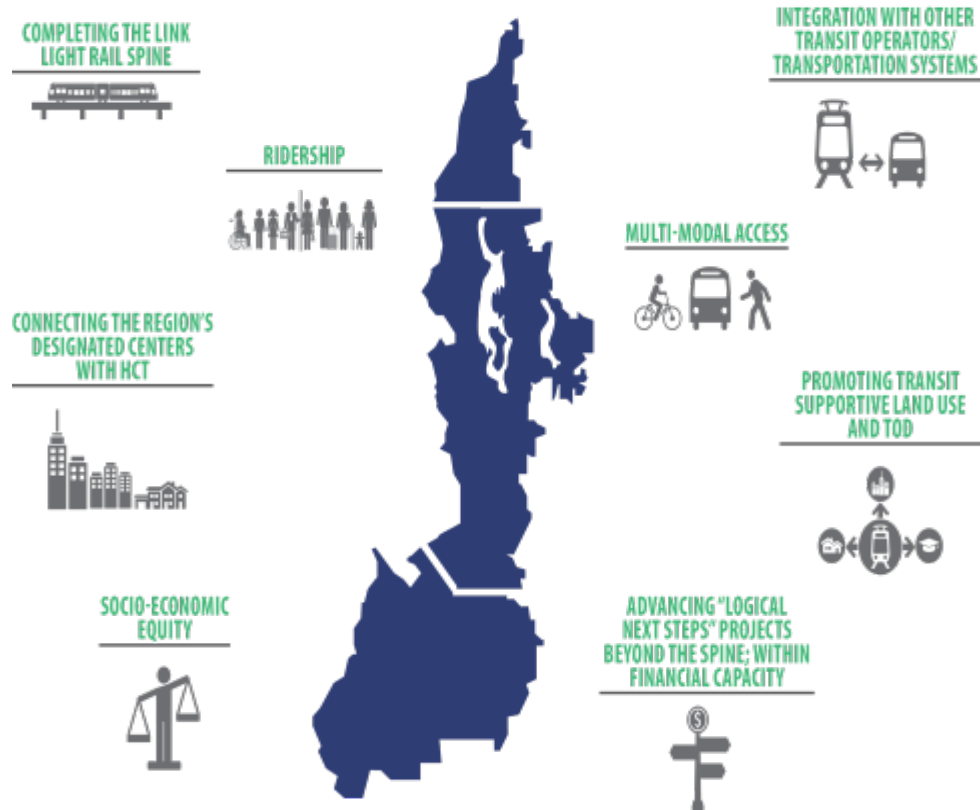
- Opening day – 67,000
- Sunday – 35,000
- Monday – 47,000
- Tuesday – 57,000

More riders every year



Source: Sound Transit ridership reports, service implementation plan and financial plan.

ST3 Core Priorities





7



DRAFT ST3 System Plan: Early Deliverables

Projects	Draft Schedule
<p>Early Deliverables to improve bus speed and reliability:</p> <ul style="list-style-type: none"> Bus on Shoulder Opportunities: I-5, I-405, SR 518, SR 167 Capital improvements for RapidRide C and D Routes Bus capital Improvements for Pacific Ave. (Tacoma) Bus capital improvements in East Pierce County <p>Early Deliverables to improve system access:</p> <ul style="list-style-type: none"> Parking on SR 522 in Kenmore, Forest Park, and Bothell I-405: Parking at Kingsgate and new transit center in South Renton with parking Parking for North and South Souder Passenger amenities, including pedestrian and bicycle improvements 	2019-2024



DRAFT ST3 System Plan: Light Rail

Projects	Draft Schedule
Redmond Technology Center to Downtown LRT	2028
Kent/Des Moines to Federal Way LRT	2028
Federal Way to Tacoma Dome LRT	2033
West Seattle to Downtown Seattle LRT	2033
Lynnwood to 128 th St. SW (Mariner) LRT	2036
Infill Light Rail Station: Graham Street	2036
Infill Light Rail Station: Boeing Access Road.	2036
Ballard to Downtown Seattle LRT (with new downtown rail tunnel)	2038
Tacoma Link Extension to Tacoma Community College	2041
128 th St. SW (Mariner) to Everett LRT via Southwest Everett Industrial Center and Evergreen Way	2041
Bellevue to Issaquah LRT	2041



DRAFT ST3 System Plan: BRT and ST Express

Projects	Draft Schedule
ST Express: <ul style="list-style-type: none"> Approximately 600K annual hours to continue providing interim express bus service in future HCT corridors 	On-going
I-405 BRT: Lynnwood to Burien	2024
SR 522 & 145th St. BRT: <ul style="list-style-type: none"> UW Bothell to 145th Light Rail Station Includes service from Woodinville 	2024

DRAFT ST3 System Plan: Sounder



Projects	Draft Schedule
Lakewood to DuPont Sounder	2036
South Sounder Capital Improvements Program:	2024-2036
<ul style="list-style-type: none"> Program to fund capital items as such as track improvements, platform extensions, and access projects to meet growing demand 	

- KEY**
- PROPOSED ST3 PROJECTS**
- Link Light Rail
 - Bus Rapid Transit
 - Souder Rail
 - Proposed shoulder-running buses / speed and reliability improvements
 - Environmental study
 - Future investment study
- CURRENT AND PLANNED SERVICE**
- Link Light Rail
 - Souder Rail
 - ST Express Bus
- STATIONS**
- New station
 - New station / added parking
 - Improved station
 - Major rail transfer
- NOTE: All routes and stations are representative.



DRAFT ST3 System Plan: Environmental and Future Investment Studies

Studies

HCT Environmental Study: Bothell to Bellevue via Kirkland

HCT Study: Northern Lake Washington

HCT Study: Light Rail extending from West Seattle to Burien, and connecting to Light Rail Spine

HCT Study: Connections from Everett to North Everett

HCT Study: Commuter Rail to Orting

Transit Integration



- Projects for transit partners
- Project allowances for funding bus/rail transfer facilities
- Concurrent long-range planning

Transit Oriented Development



- Project allowances for TOD Planning
- Regional Equitable TOD Fund: \$20m
- TOD Program: \$20m

System Access



- System Access: \$100m
- Innovation and Research \$75m
- Project allowances: Non-motorized access
- Parking



Time period: 25 years

Total Estimated Costs: \$50b

Costs per Adult: \$200/year or \$17/month

Revenue Sources:

- 0.5% new sales tax
- 0.8% MVET
- \$0.25 Property Tax
- Remaining available Sound Move and ST2 taxes
- Federal funds
- Fares
- Bonding



Draft ST3 funding

Revenue source <i>in billions, YOY</i>	15 years	25-year Draft ST3 Plan
Sales tax	9	17
License tabs	4	7
Property tax	2	3
Total taxes*	15	27
Other revenue	11	23
Total estimated sources of funds	\$26B	\$50B

* Current forecast for ST3: 0.5% sales & use tax, 0.8% MVET & 0.25% property tax

Public outreach

Objectives:

- Public awareness
- Action – take survey, attend meetings, comment on draft plan
- Web metrics – likes, shares, comments

Awareness generation

- News conference, news releases, media availability
- Mailer sent to a million households in 3 counties
- Sound Transit website & [soundtransit3.org](https://www.soundtransit3.org)
- Paid media
- Social media posts



Digital outreach

- ST3 website: draft plan content, meetings, public comment period
- Online survey at soundtransit3.org
- Social media promotion & reactive (response)
- Blog
- Rider Alert email



Public meetings

April 19*

Ballard High School – 5:30 pm

April 21

Evergreen State College, Tacoma - 5:30 pm

April 25

Everett Station - 5:30 pm

April 26*

West Seattle High School - 5:30 pm

April 27*

Old Redmond School House - 5:30 pm

April 28*

Todd Beamer H.S., Federal Way - 5:30 pm

April 28*

Union Station, Seattle – 11:30 am

**Coordination with King County Metro's LRP public outreach*

Speakers Bureau

35+ presentations across region during
March 29-April 29 comment period

- Cities & jurisdictions
- Chambers & business groups
- Neighborhoods
- Interest groups
- Professional organizations

Non-English and other communications

- Partnerships: OneAmerica, Puget Sound Sage, Forterra, Transportation Choices Coalition & others
- ST3 information translated into 6 languages:
 - Spanish
 - Somali
 - Traditional Chinese
 - Korean
 - Vietnamese
 - Tagalog

2016

Next steps



Winter/Spring

Sound Transit Board used public feedback and further analysis to develop a draft plan



We ask you if we got the draft plan right [JOIN IN](#)

Board modifies draft plan based on public input



Summer

June: Sound Transit Board adopts plan



November

Public vote on ST3 ballot measure



Connect with us

SOUNDTRANSIT3.ORG

Facebook.com/SoundTransit

Twitter.com/@SoundTransit

