

An aerial photograph of a city street intersection. A semi-transparent blue rectangle is overlaid on the upper portion of the image, containing the title text. The street below shows various vehicles including cars, vans, and a truck. Pedestrians are visible on the sidewalks. A green-painted bike lane with white directional arrows is visible on the right side of the road. The ground is covered with fallen yellow leaves, suggesting an autumn setting. The text "Bicycle Implementation Plan" is in a large, bold, white sans-serif font, and "2019-2024" is in a slightly smaller, regular weight of the same font below it.

# Bicycle Implementation Plan

## 2019-2024



# Presentation overview

- Recent progress
- Prioritization process
- Equity
- Risk assessment
- Outreach
- 2019-2024 Proposed Implementation Plan
- Next steps



# Seattle is an award-winning bike city

**2018:** #1 Bicycle City by Bicycling Magazine

**2018:** #1 New Bikeways—2<sup>nd</sup> Avenue Protected Bike Lane (PBL) by People for Bikes

**2016:** #1 New Bike Facility – Westlake PBL by People for Bikes

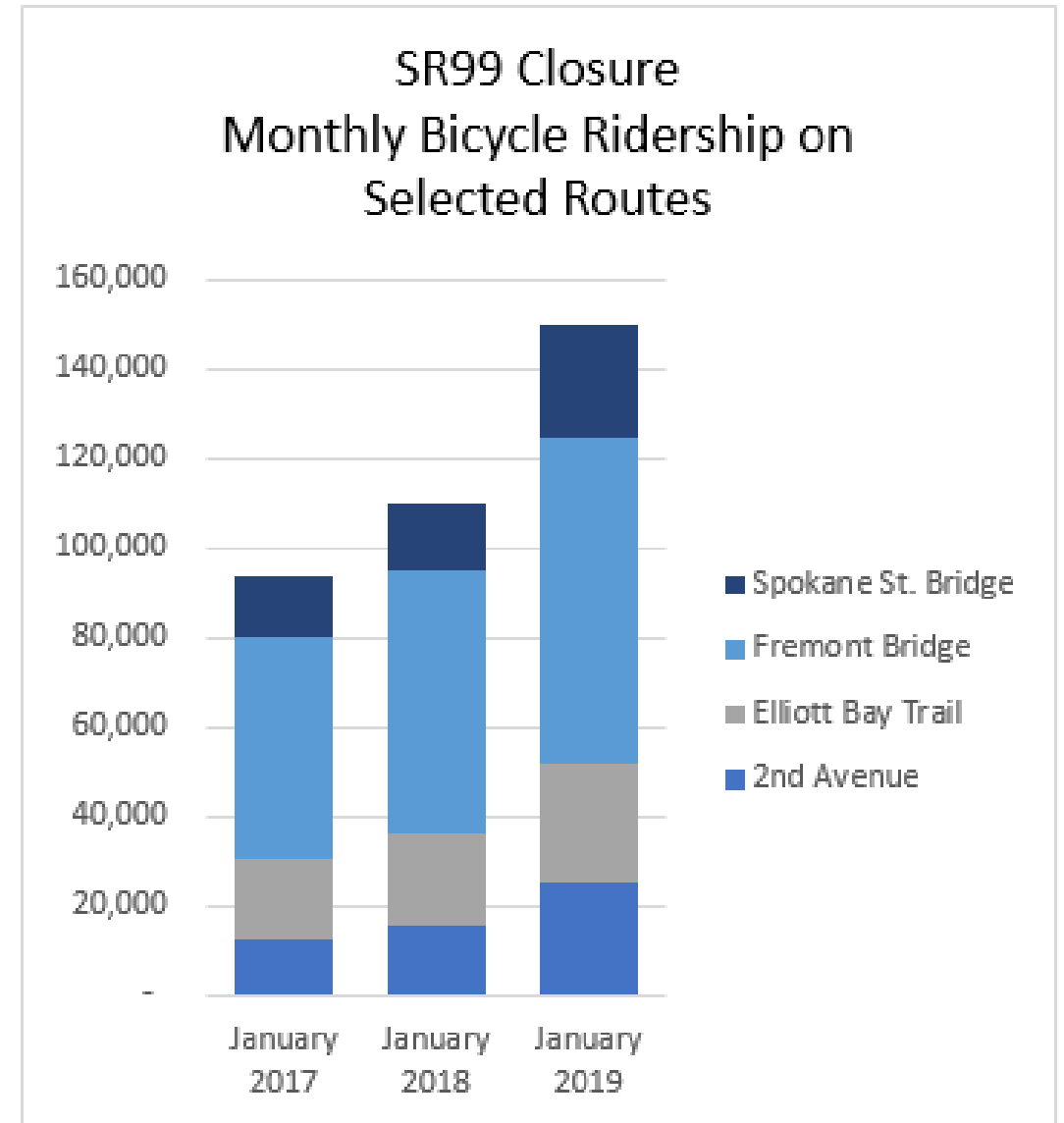
Westlake Protected Bike Lane Project



# Data shows more people are riding bikes

- 2018 bike ridership increased by 12% from 2017\*
  - 2nd Ave PBL increased 32%
- Bikes were a good travel option during the first chapter of the Seattle Squeeze

\* Data based on 4 permanent bike counters at Spokane St, Fremont Bridge, Elliot Bay, and 2<sup>nd</sup> Ave





# Progress in building a complete bike network

- Recently completed
  - West Seattle NGW
  - Columbian Way NGW
  - Rainier N-S NGW
  - 7<sup>th</sup> Ave PBL
- Under construction for completion in 2019
  - NE 65<sup>th</sup> St PBL
  - Columbian Way PBL
  - Wilson Ave S PBL
  - Swift/Myrtle/Othello PBL
- In design
  - Center City Bike PBL Network
  - Stone Way and Green Lake PBL
  - N 34<sup>th</sup> St PBL
  - E Marginal Way PBL
  - Delridge Way SW PBL
  - Eastlake Ave E PBL



# How we prioritize projects in the plan

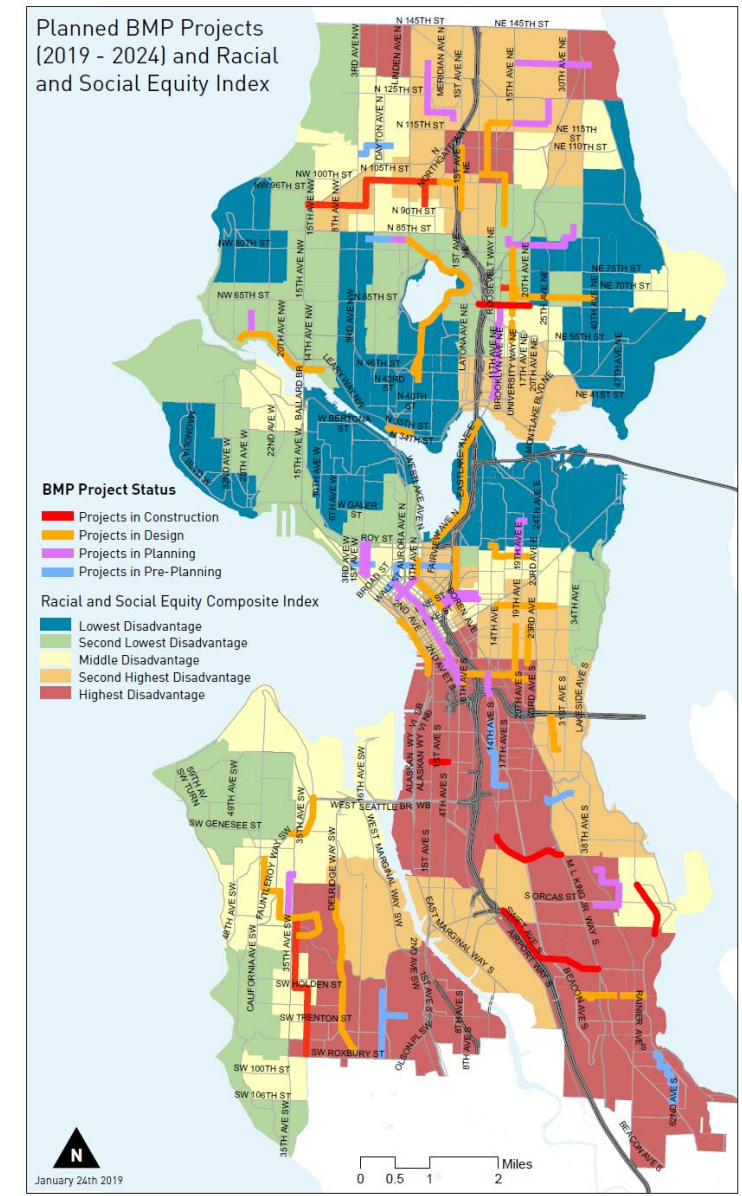
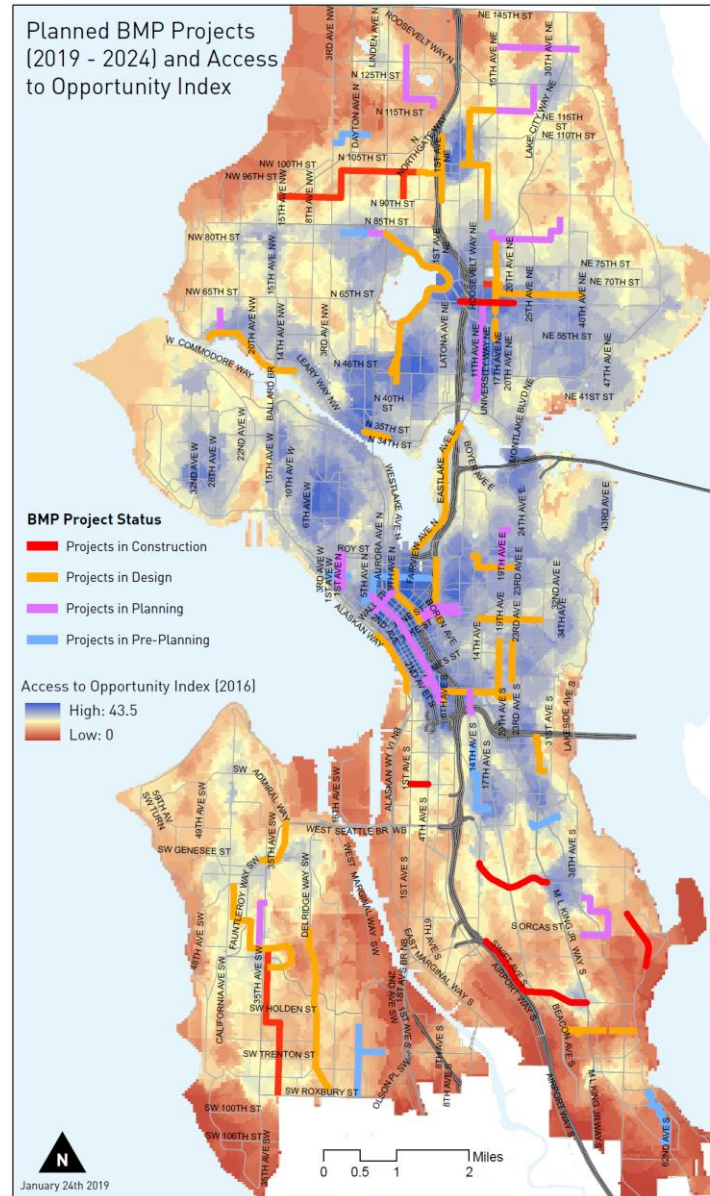
- Quantitative
  - Safety
  - Connectivity
  - Equity
  - Ridership
  - Livability
- Qualitative with Seattle Bike Advisory Board:
  - Leveraging opportunities
  - Project coordination
  - Geographic equity
  - Connectivity to light rail, transit, and Urban Villages
  - Funding availability per the Levy to Move Seattle reassessment





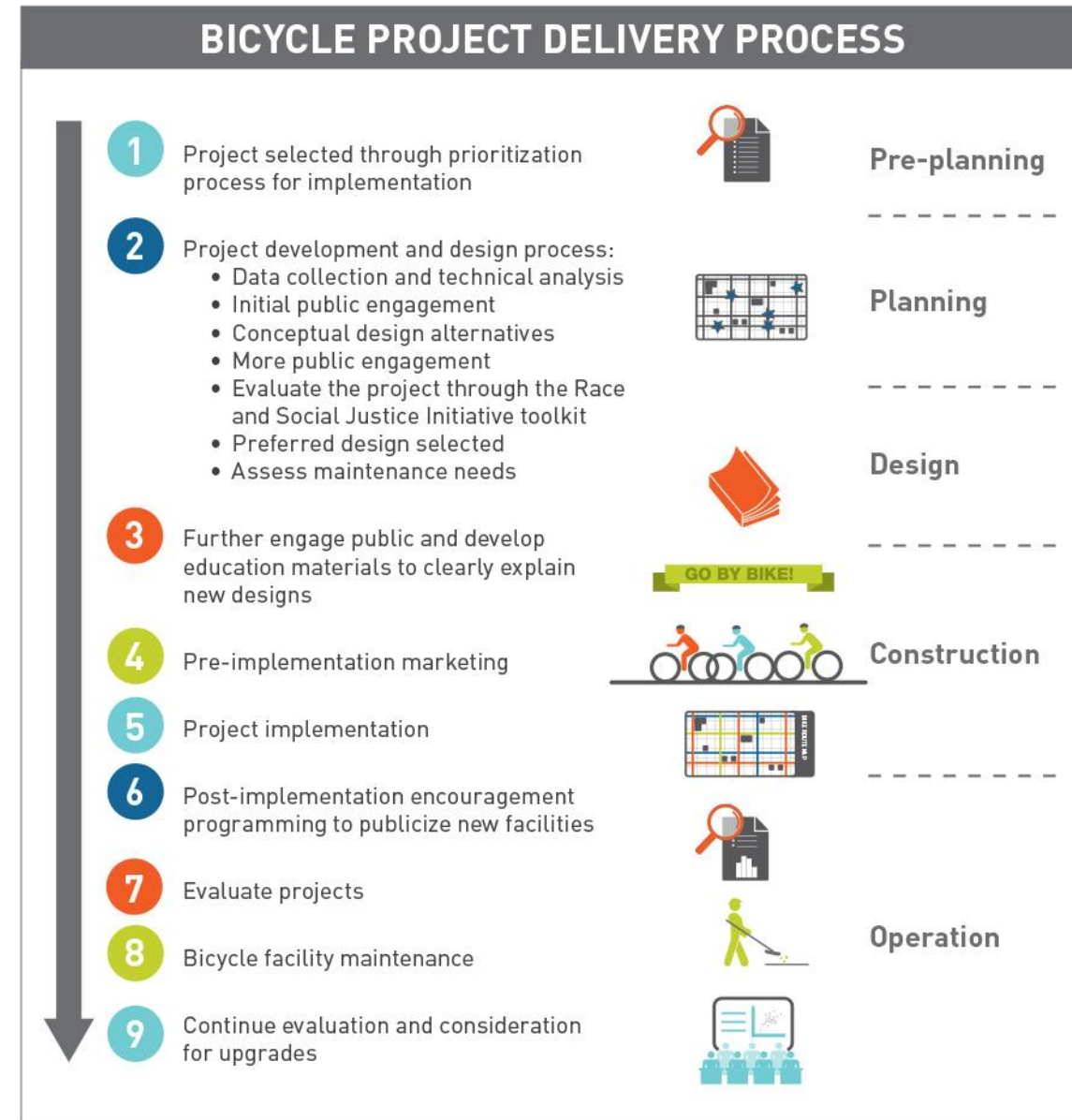
# A commitment to equity

- Projects reviewed for geographic balance, socioeconomic factors, health, and accessibility
- Incorporated into quantitative analysis and confirmed through qualitative prioritization processes



# Community engagement is welcome on each project

Once the implementation plan is finalized, outreach is conducted for each project at key planning, design and construction milestones





# New this year: a detailed risk assessment

- Objective: Increase transparency
- Considerations:
  - Design phase
  - Funding levels
  - Potential partnerships
  - Right-of-way requirements
- Next step—gather community input on projects in planning phase



# Getting the word out to a wider audience

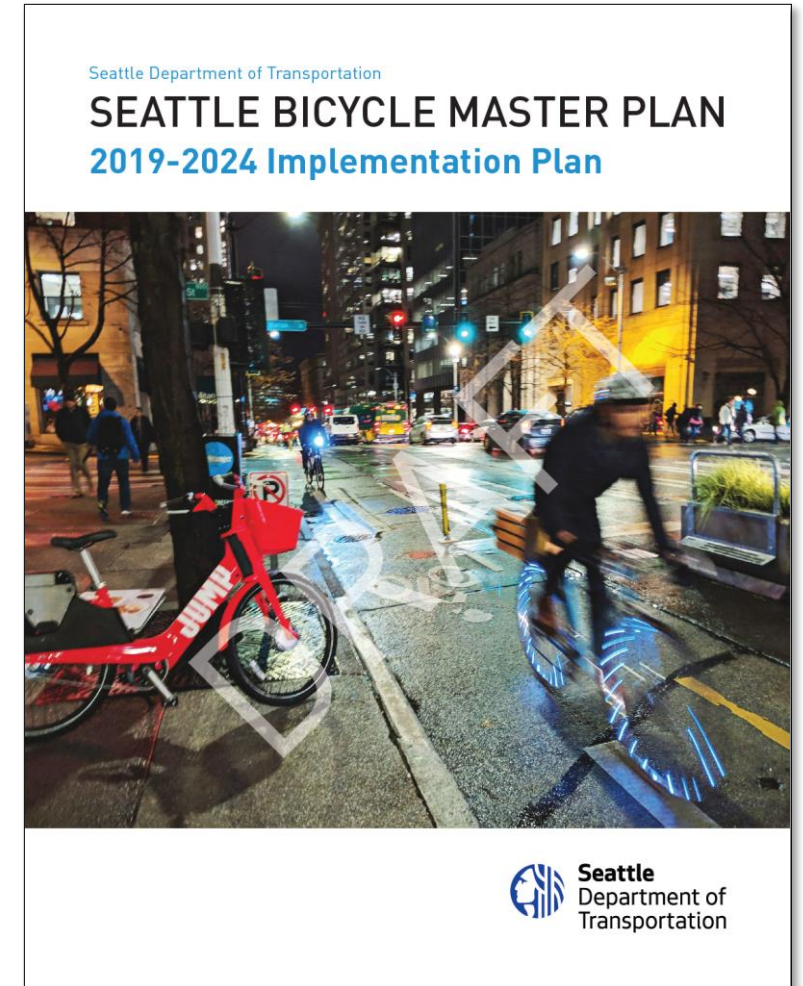
- Share value of a connected bike network and how projects were selected
- Discuss project list and gather feedback on projects in **planning phase**
  - April 2: Levy Oversight Committee
  - April 3: Seattle Bicycle Advisory Board (SBAB)
  - April 8 – 28: Outreach events in North, Central, and South Seattle
  - May: Report back to SBAB and Council





# 2019 – 2024 Implementation Plan basics

- Six-year plan to align with Levy to Move Seattle reassessment
- 62 miles of new bike facilities constructed and designed in current plan
- \$76.8 million in investments (\$63.9M is Levy funding)
- City's commitment to build a connected and safe bike network as Seattle grows



# Protected bike lanes, bike lanes, and trails

- Projects address potential safety issues identified in the *Bicycle and Pedestrian Safety Analysis*
- Connections made:
  - 22 to existing or proposed frequent transit network routes
  - 4 to existing or soon to be open LINK stations
  - 16 provide bicycle connections near schools





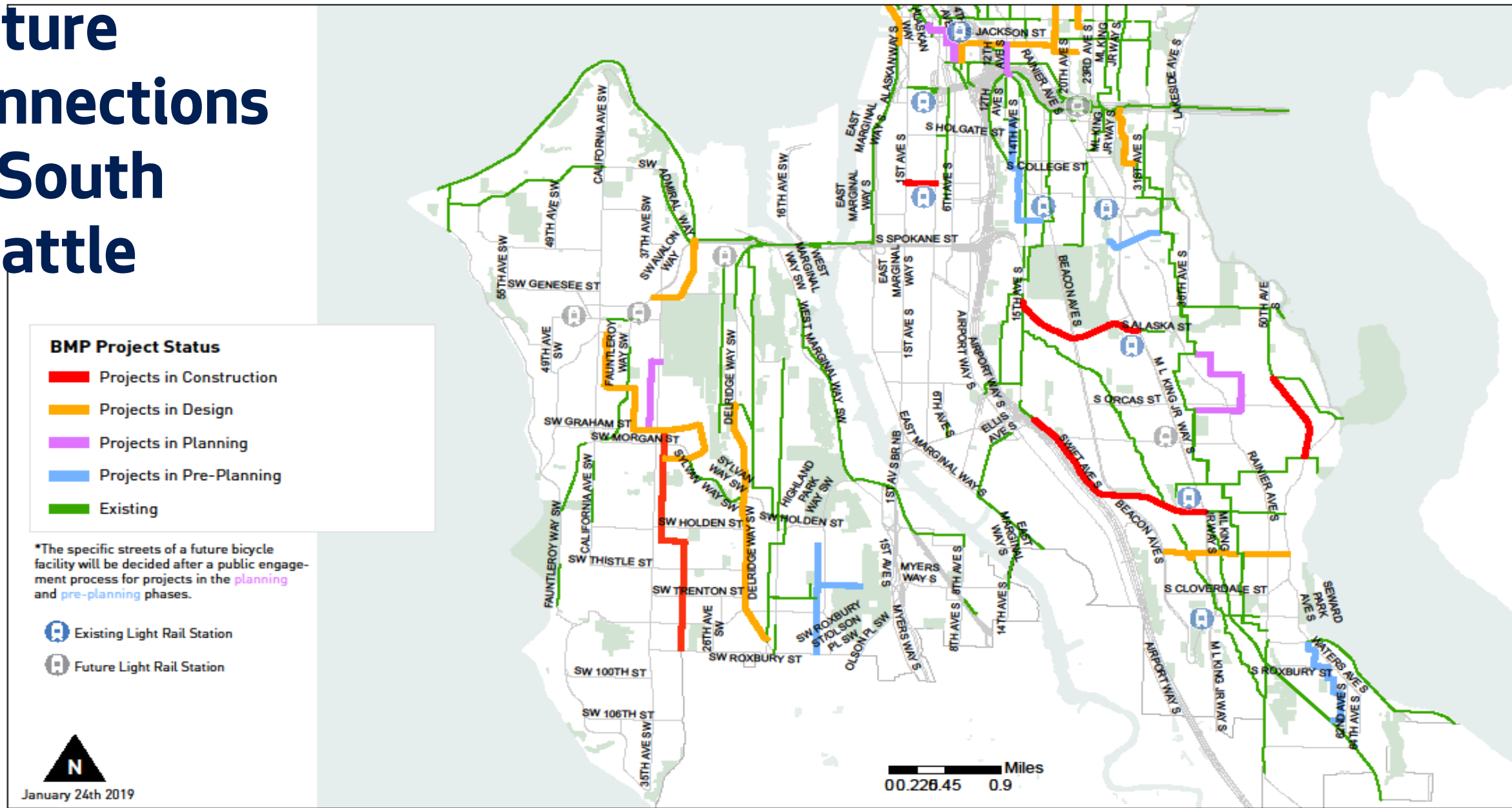
# Neighborhood Greenways

Connections made:

- 10 new Safe Routes to School connections
- 27 projects connect to frequent transit network routes
- 11 projects connect to existing or soon to be open LINK stations

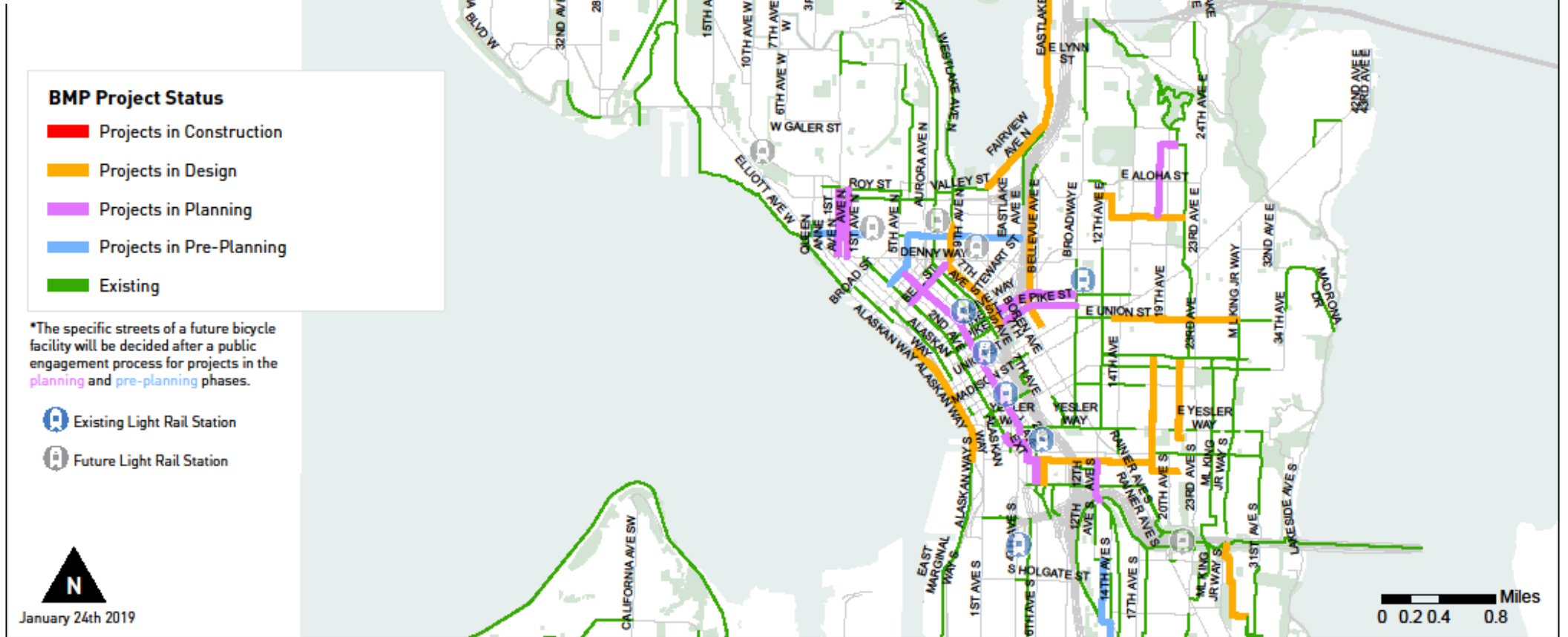


# Future connections in South Seattle

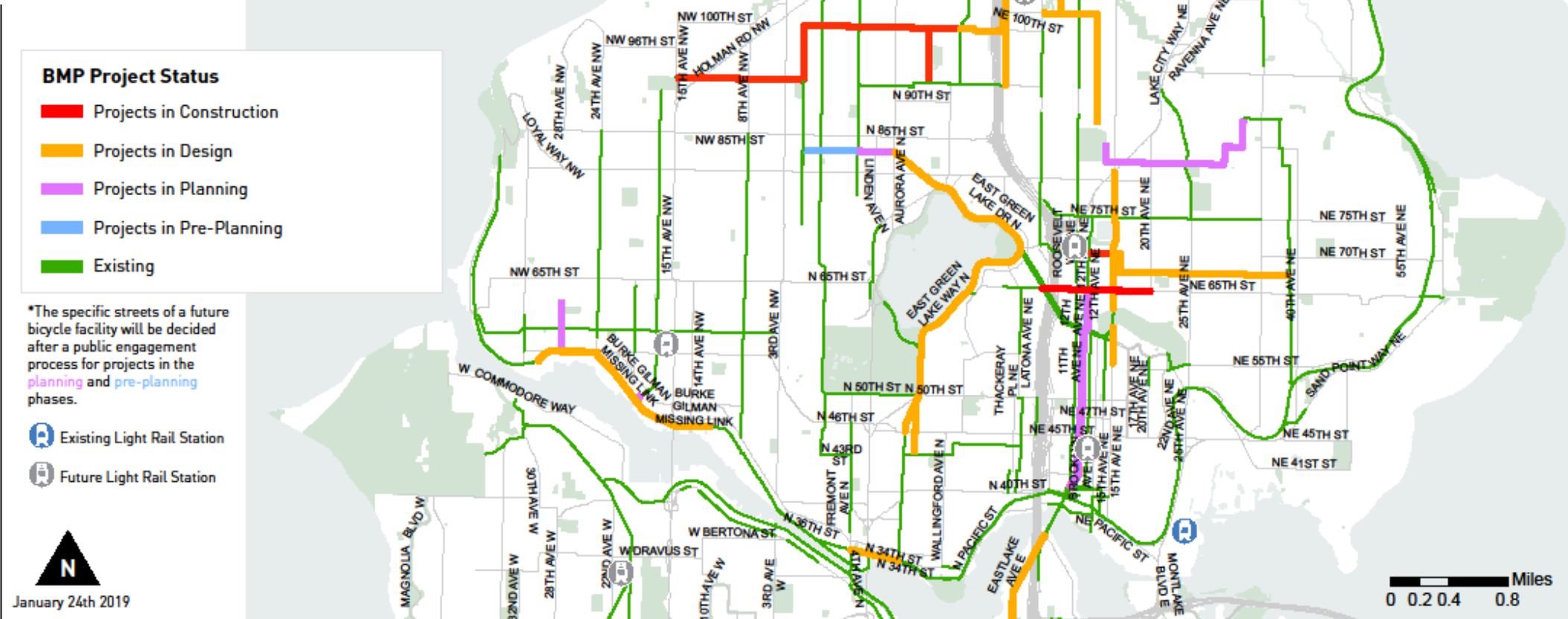




# Future connections in Central Seattle



# Future connections in North Seattle





# Next Steps

| Date         | Activity/action                           |
|--------------|---|
| April 2      | Council Transportation Committee briefing |
| April 2      | Levy Oversight Committee briefing         |
| April 3      | Seattle Bicycle Advisory Board update     |
| April 8 – 28 | Outreach events                           |
| May          | Final Plan transmitted to City Council    |
| Ongoing      | Project specific outreach                 |

# Questions?

[Jim.Curtin@Seattle.gov](mailto:Jim.Curtin@Seattle.gov)

[Monica.Dewald@Seattle.gov](mailto:Monica.Dewald@Seattle.gov)

[www.seattle.gov/transportation/document-library/citywide-plans/modal-plans](http://www.seattle.gov/transportation/document-library/citywide-plans/modal-plans)

[www.seattle.gov/transportation](http://www.seattle.gov/transportation)

