



# SEATTLE CITY COUNCIL

## Select Committee on Homelessness Strategies and Investments

### Agenda

Thursday, May 6, 2021

2:00 PM

### Special Meeting

Remote Meeting. Call 253-215-8782; Meeting ID: 586 416 9164; or  
Seattle Channel online.

Andrew J. Lewis, Chair

Lisa Herbold, Vice-Chair

M. Lorena González, Member

Debora Juarez, Member

Tammy J. Morales, Member

Teresa Mosqueda, Member

Alex Pedersen, Member

Kshama Sawant, Member

Dan Strauss, Member

Chair Info: 206-684-8807; [Andrew.Lewis@seattle.gov](mailto:Andrew.Lewis@seattle.gov)

[Watch Council Meetings Live](#) [View Past Council Meetings](#)

Council Chamber Listen Line: 206-684-8566

For accessibility information and for accommodation requests, please call  
206-684-8888 (TTY Relay 7-1-1), email [CouncilAgenda@Seattle.gov](mailto:CouncilAgenda@Seattle.gov), or visit  
<http://seattle.gov/cityclerk/accommodations>.



**SEATTLE CITY COUNCIL**  
**Select Committee on Homelessness Strategies**  
**and Investments**  
**Agenda**  
**May 6, 2021 - 2:00 PM**  
**Special Meeting**

**Meeting Location:**

Remote Meeting. Call 253-215-8782; Meeting ID: 586 416 9164; or Seattle Channel online.

**Committee Website:**

<http://www.seattle.gov/council/committees/homelessness-strategies-and-investments>

---

This meeting also constitutes a meeting of the City Council, provided that the meeting shall be conducted as a committee meeting under the Council Rules and Procedures, and Council action shall be limited to committee business.

*In-person attendance is currently prohibited per Washington State Governor's Proclamation 20-28.15, until the COVID-19 State of Emergency is terminated or Proclamation 20-28 is rescinded by the Governor or State legislature. Meeting participation is limited to access by telephone conference line and online by the Seattle Channel.*

Register online to speak during the Public Comment at the 2:00 p.m. Special Meeting of the Select Committee on Homelessness Strategies and Investments at  
<http://www.seattle.gov/council/committees/public-comment>.

Online registration to speak at the Special Meeting of the Select Committee on Homelessness Strategies and Investments will begin two hours before the 2:00 p.m. meeting start time, and registration will end at the conclusion of the Public Comment period. Speakers must be registered in order to be recognized by the Chair.

Submit written comments to Councilmember Lewis at  
[Andrew.Lewis@seattle.gov](mailto:Andrew.Lewis@seattle.gov).

Sign-up to provide Public Comment at  
<http://www.seattle.gov/council/committees/public-comment>.  
Watch live streaming video of the meeting at  
<http://www.seattle.gov/council/watch-council-live>.

Listen to the meeting by calling the Council Chamber Listen Line at  
253-215-8782 Meeting ID: 586 416 9164  
One Tap Mobile No. US: +12532158782,,5864169164#

*Please Note: Times listed are estimated*

**A. Call To Order**

**B. Approval of the Agenda**

**C. Public Comment**

**D. Items of Business**

1. **Briefing on Seattle's Street Sink Program**

Supporting Documents: [Updated Presentation](#)

**Briefing and Discussion**

**Presenters:** Mami Hara, General Manager, Seattle Public Utilities;  
Andres Mantilla, Director, Seattle Department of Neighborhoods; SPU staff

2. **Briefing and Discussion of Seattle's Homelessness Outreach and Provider Ecosystem (HOPE) Team**

Supporting Documents: [Presentation](#)

**Briefing and Discussion**

**Presenters:** Helen Howell, Interim Director, Tess Colby, Diana Salaza, and Tara Beck, Human Services Department

3. **Briefing and Discussion of Seattle's 2021 Shelter Investments**

Supporting Documents: [Presentation](#)

**Briefing and Discussion**

**Presenters: Presenters:** Helen Howell, Interim Director, Tess Colby, Diana Salaza, and Tara Beck, Human Services Department

**E. Adjournment**



## Legislation Text

---

**File #:** Inf 1805, **Version:** 1

---

Briefing on Seattle's Street Sink Program

# Hand Hygiene CBA Update

## Select Committee on Homelessness Strategies and Investments

May 6, 2021

Mami Hara, CEO/General Manager, Seattle Public Utilities  
Andrés Mantilla, Director, Department of Neighborhoods



**City of Seattle** 6



# City Council Directive

City Council included \$100,000 in the 2021 SPU Budget to develop a publicly-accessible street sink program, **“In order to increase access to hygiene and handwashing facilities for all residents in need of services”**

SPU was directed to:

- Develop a grant-style program for funding distribution
- Provide technical assistance to potential applicants on the challenges associated with developing street sinks

SPU also worked with Council to:

- Pilot grant as an idea/innovation challenge with a strong evaluation component
- Add \$50,000 in SPU funding to address food rescue, materials management
- Allow flexibility/opportunity for possible drinking water proposals





## Mutual Aid

*"A system of pooling together resources and providing supplies, food and organizing powers in response to a crisis."*

*Dean Spade, Seattle University Professor*



# Effort Milestones





# Innovation Program Focus



Seeking small-scale and rapid innovations in various settings



Looking for low-cost and most efficient solutions



SPU will provide metrics for each innovation area to use for evaluation purposes



Hope for long-term impacts from this work

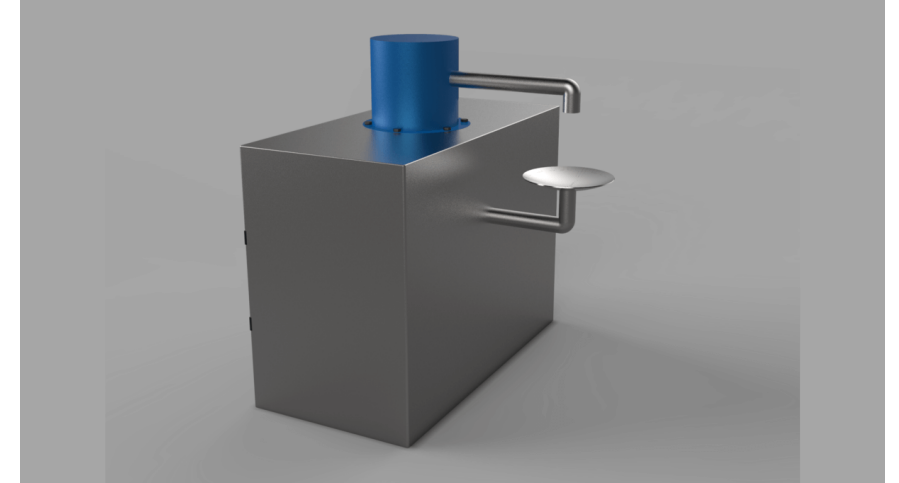
# Hand Hygiene Solutions

## Problem Definition

People experiencing homelessness may lack access to options to keep hands clean and prevent the spread of disease.

## Range of innovation possibilities

- No running water available – camp tubs, sanitation kits
- Running water available – sink models





# Hand Sink Technical Challenges

	Considerations & Challenges	Regulatory Authority
<b>Water Source</b>	<ul style="list-style-type: none"><li>• Source water should be potable and avoid cross contamination with non-potable sources</li><li>• Continuous supply</li><li>• Freeze protection</li><li>• Adequate flow / volume for need</li></ul>	<ul style="list-style-type: none"><li>• <a href="#">Seattle Plumbing Code</a>, 602.2, Cross-Contamination</li></ul>
<b>Greywater</b>	<ul style="list-style-type: none"><li>• Discharge to the sanitary or combined sewer system</li><li>• Avoid human and vector contact (including possibility of consumption) with greywater or contaminated surfaces / materials</li></ul>	<ul style="list-style-type: none"><li>• Washington Department of Health, <a href="#">WAC-246-274-011</a></li><li>• <a href="#">Seattle Plumbing Code</a></li></ul>
<b>Accessibility</b>	<ul style="list-style-type: none"><li>• New facilities must be ADA compliant</li><li>• Access routes must be clear of obstructions, on firm, smooth surfaces, and the proper grade.</li><li>• Not flooded with greywater</li></ul>	<ul style="list-style-type: none"><li>• <a href="#">Americans with Disabilities Act</a>, Section 201.3 Temporary and Permanent Structures; Section 213 Toilet and Bathing Facilities; Exception 3</li><li>• Chapter 3, Building Blocks, Sections 302, 303, 308, 309</li></ul>
<b>Durability and Location</b>	<ul style="list-style-type: none"><li>• Expect high levels of vandalism</li><li>• Models should be durable against cutting, fire, breakage, theft; easy and inexpensive to repair; resistant to intentional contamination, particularly water supply</li><li>• Locations should be open, public, monitorable and well-lit, not create hazards (tripping)</li><li>• Plan for removal after funding period ends</li></ul>	<ul style="list-style-type: none"><li>• <a href="#">Americans with Disabilities Act</a>, Section 305 Clear Floor or Ground Space</li><li>• <a href="#">Seattle Plumbing Code</a>, 601.3, Identification of a Potable and Non-Potable System</li></ul>
<b>Maintenance</b>	<ul style="list-style-type: none"><li>• Likely highest cost</li><li>• How and who will perform?</li><li>• Short-term vs long-term commitment?</li><li>• Must consider the total life-cycle cost</li></ul>	

# Waste Prevention Solutions

## Problem Definition

The City has seen an increase in food insecurity, litter, illegal dumping, and trash remediation since the start of the pandemic.

## Range of innovation possibilities

- Focused on food rescue and other materials, including litter
- Sharing, reusing, repairing, repurposing interventions



# SPU & DON

- Part of an ongoing, larger partnership between the two departments
- DON contributions to grant development and community engagement efforts
- Ongoing technical assistance to partners interested in this work, including informational webinar on April 22

# Thank You!

For more information or questions:

- Contact **Kate Morrison**
- [Catherine.Morrison@seattle.gov](mailto:Catherine.Morrison@seattle.gov)



## Additional Information: Other City Efforts

- Similar efforts around the country are addressing hand hygiene needs, including in Atlanta, Denver, and Houston
- Face similar challenges in meeting greywater and accessibility requirements
- Successful sinks efforts:
  - Partner with faith and community-based organizations as hosts
  - Independent and community-driven fundraising
  - Strong volunteer support





## Legislation Text

---

**File #:** Inf 1806, **Version:** 1

---

Briefing and Discussion of Seattle's Homelessness Outreach and Provider Ecosystem (HOPE) Team

# HOPE Team and New Shelter Update

Select Committee on Homelessness Strategies and Investments

May 6, 2021

# Overview

- HOPE Team
  - HOPE Team Overview
  - HOPE Team Referral Process
- New Shelter Resources
  - Hotel Program
  - Tiny House Villages
  - Enhanced Shelter
  - 2021 Pipeline

# HOPE Team

- HOPE Team Overview
- HOPE Team Referral

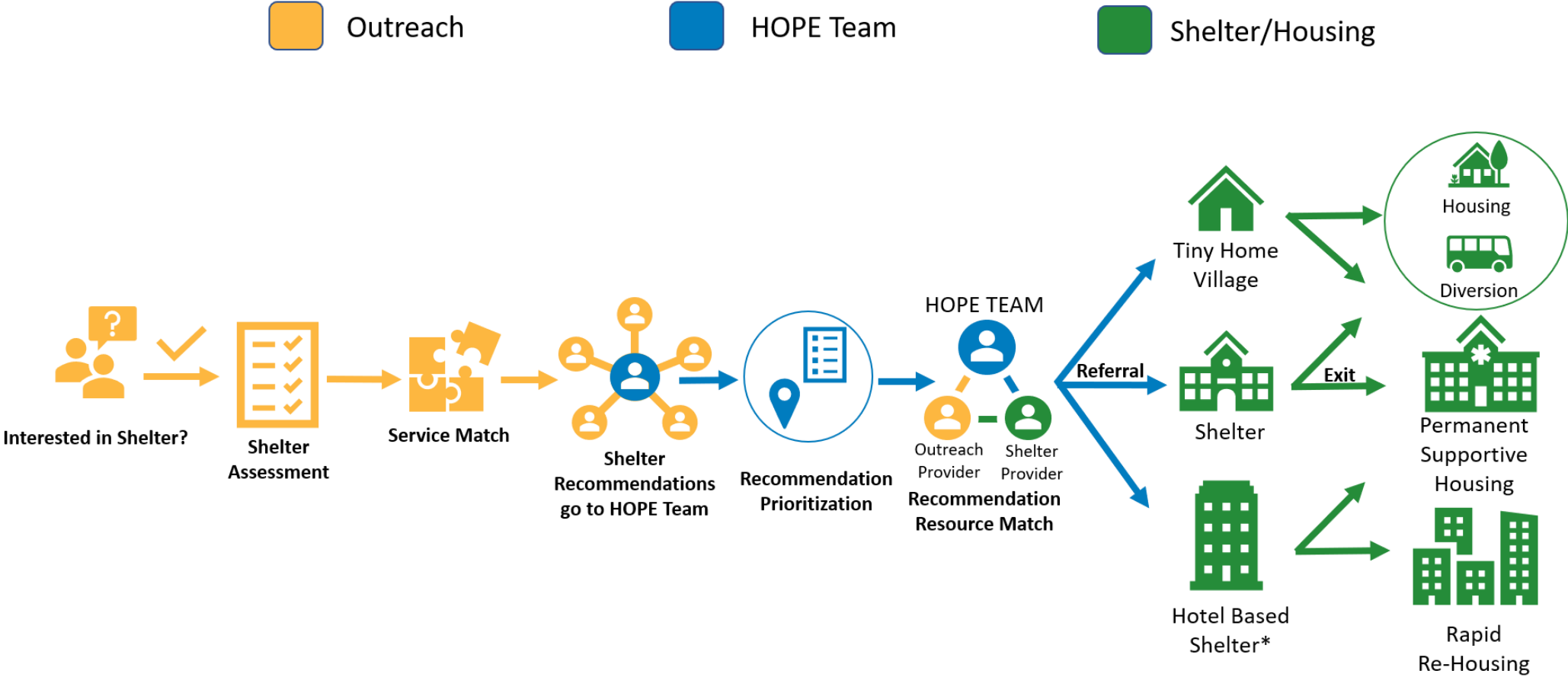
# HOPE Team Overview

- HSD led team that coordinates outreach and referrals to City funded shelter resources
  - Coordinates efforts by outreach, shelter providers, City departments, and community to help people living unsheltered in Seattle
  - Directs outreach to City department-identified high-priority areas
  - Makes referrals, based on recommendations from outreach providers, to City-funded shelters
- Provides on-site support for outreach providers at high-priority sites
- Partners with City departments on encampment litter and debris mitigation efforts through the **Clean City initiative**
- Does not lead encampment removal operations

# Referral Process

- Outreach providers work with unsheltered person to assess needs
- HOPE Team provides real-time shelter vacancy reports (for HOPE Team "set-aside" beds only)
- HOPE Team receives person-centered shelter recommendations from outreach providers
- HOPE Team connects those recommendations to open beds (when a match is made a recommendation becomes a referral)

# Referral Process Flow Chart



*\*COVID Risk Prioritization factors: Age (65+), Pre-Existing Medical Conditions, Race & Ethnicity, and Pregnancy*

# New Shelter Resources from 2021 Budget

- Hotel Program
- Tiny House Villages
- Enhanced Shelter
- 2021 Pipeline

# Hotel Program

- Executive Pacific Hotel, operated by Low Income Housing Institute (LIHI)
  - 139 units
  - Opened March 24, 2021
  - Occupancy of 109 units serving 129 clients and operating at 78% capacity as of April 29
  - RRH program operated by Catholic Community Services (CCS)
- Kings Inn, operated by Chief Seattle Club (CSC)
  - 58 units
  - Opened March 29, 2021
  - Serving 68 clients and operating at 100% capacity as of April 19
  - CSC operates RRH program

# Tiny House Villages

- Three new Tiny Home Villages confirmed in 2021 with approximately 120 units:
  - **Rosie's Tiny Home Village (University District)**
    - Partnership with Sound Transit
    - Anticipated opening in June
  - **Friendship Heights Tiny Home Village (North Seattle)**
    - LIHI pursuing religious sponsorship
    - Anticipated opening June/July
  - **Interbay Tiny Home Village expansion**
    - Partnership with Port of Seattle
    - Expected open date in Summer 2021

# 24/7 Enhanced Shelter

- First Presbyterian Church, operated by WHEEL
  - New enhanced low barrier shelter for women
  - Providing 60 spaces
  - Ramping up to 24/7 services starting May 31
    - Provider capacity has remained a challenge
  - Onsite case management and housing navigation, showers, dining area, nurse's station, case manager's office and storage.

# 2021 HSD Pipeline

- Seeking provider for third hotel option
- Releasing RFP for more tiny home village providers
- Exploring opportunities for remaining shelter beds
- Provider capacity continues to be a challenge to opening new shelters quickly

# Question and Answer



## Legislation Text

---

**File #:** Inf 1807, **Version:** 1

---

Briefing and Discussion of Seattle's 2021 Shelter Investments

# HOPE Team and New Shelter Update

Select Committee on Homelessness Strategies and Investments

May 6, 2021

# Overview

- HOPE Team
  - HOPE Team Overview
  - HOPE Team Referral Process
- New Shelter Resources
  - Hotel Program
  - Tiny House Villages
  - Enhanced Shelter
  - 2021 Pipeline

# HOPE Team

- HOPE Team Overview
- HOPE Team Referral

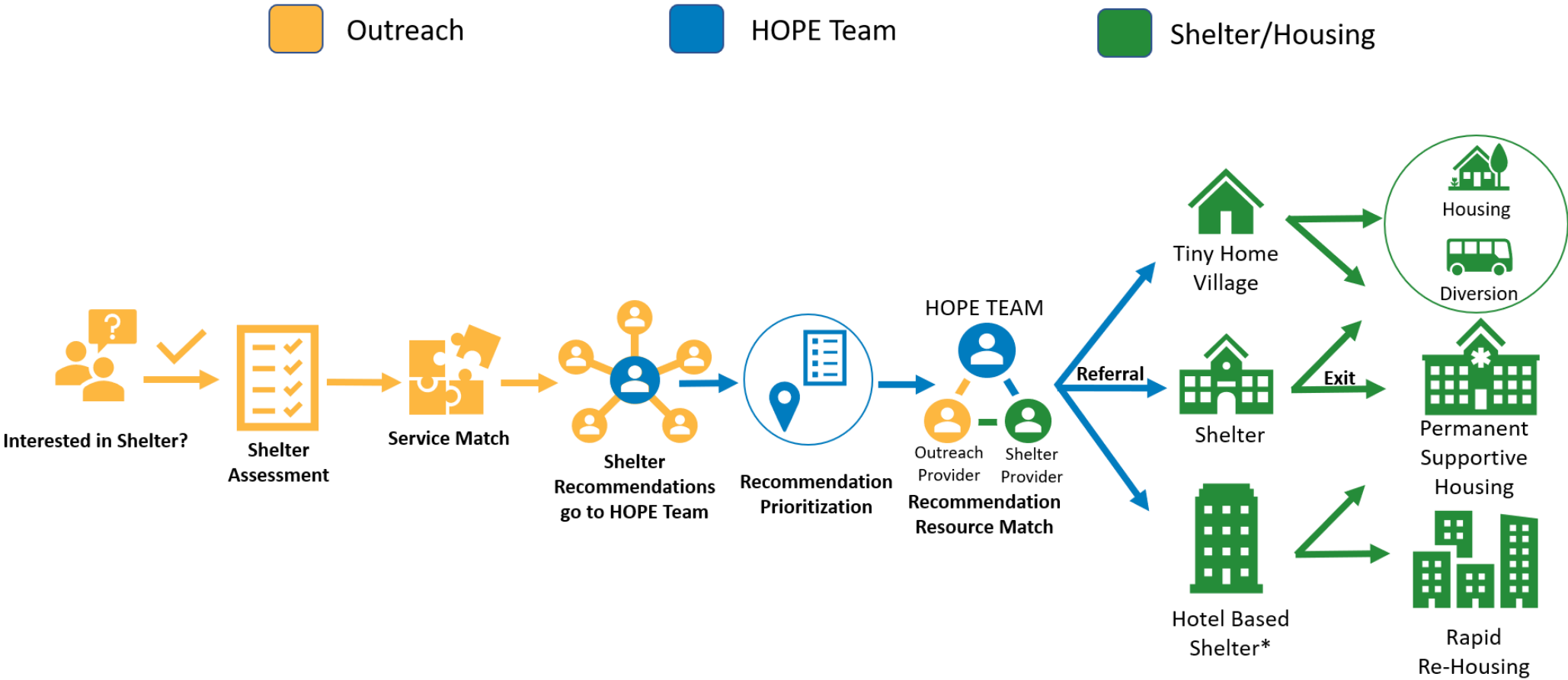
# HOPE Team Overview

- HSD led team that coordinates outreach and referrals to City funded shelter resources
  - Coordinates efforts by outreach, shelter providers, City departments, and community to help people living unsheltered in Seattle
  - Directs outreach to City department-identified high-priority areas
  - Makes referrals, based on recommendations from outreach providers, to City-funded shelters
- Provides on-site support for outreach providers at high-priority sites
- Partners with City departments on encampment litter and debris mitigation efforts through the **Clean City initiative**
- Does not lead encampment removal operations

# Referral Process

- Outreach providers work with unsheltered person to assess needs
- HOPE Team provides real-time shelter vacancy reports (for HOPE Team "set-aside" beds only)
- HOPE Team receives person-centered shelter recommendations from outreach providers
- HOPE Team connects those recommendations to open beds (when a match is made a recommendation becomes a referral)

# Referral Process Flow Chart



*\*COVID Risk Prioritization factors: Age (65+), Pre-Existing Medical Conditions, Race & Ethnicity, and Pregnancy*

# New Shelter Resources from 2021 Budget

- Hotel Program
- Tiny House Villages
- Enhanced Shelter
- 2021 Pipeline

# Hotel Program

- Executive Pacific Hotel, operated by Low Income Housing Institute (LIHI)
  - 139 units
  - Opened March 24, 2021
  - Occupancy of 109 units serving 129 clients and operating at 78% capacity as of April 29
  - RRH program operated by Catholic Community Services (CCS)
- Kings Inn, operated by Chief Seattle Club (CSC)
  - 58 units
  - Opened March 29, 2021
  - Serving 68 clients and operating at 100% capacity as of April 19
  - CSC operates RRH program

# Tiny House Villages

- Three new Tiny Home Villages confirmed in 2021 with approximately 120 units:
  - **Rosie's Tiny Home Village (University District)**
    - Partnership with Sound Transit
    - Anticipated opening in June
  - **Friendship Heights Tiny Home Village (North Seattle)**
    - LIHI pursuing religious sponsorship
    - Anticipated opening June/July
  - **Interbay Tiny Home Village expansion**
    - Partnership with Port of Seattle
    - Expected open date in Summer 2021

# 24/7 Enhanced Shelter

- First Presbyterian Church, operated by WHEEL
  - New enhanced low barrier shelter for women
  - Providing 60 spaces
  - Ramping up to 24/7 services starting May 31
    - Provider capacity has remained a challenge
  - Onsite case management and housing navigation, showers, dining area, nurse's station, case manager's office and storage.

# 2021 HSD Pipeline

- Seeking provider for third hotel option
- Releasing RFP for more tiny home village providers
- Exploring opportunities for remaining shelter beds
- Provider capacity continues to be a challenge to opening new shelters quickly

# Question and Answer