



City of Seattle
Edward B. Murray, Mayor

Department of Transportation
Scott Kubly, Director

Director's Report for Transportation Committee
February 24, 2015

CURRENT ISSUES

Alaskan Way Viaduct Replacement:

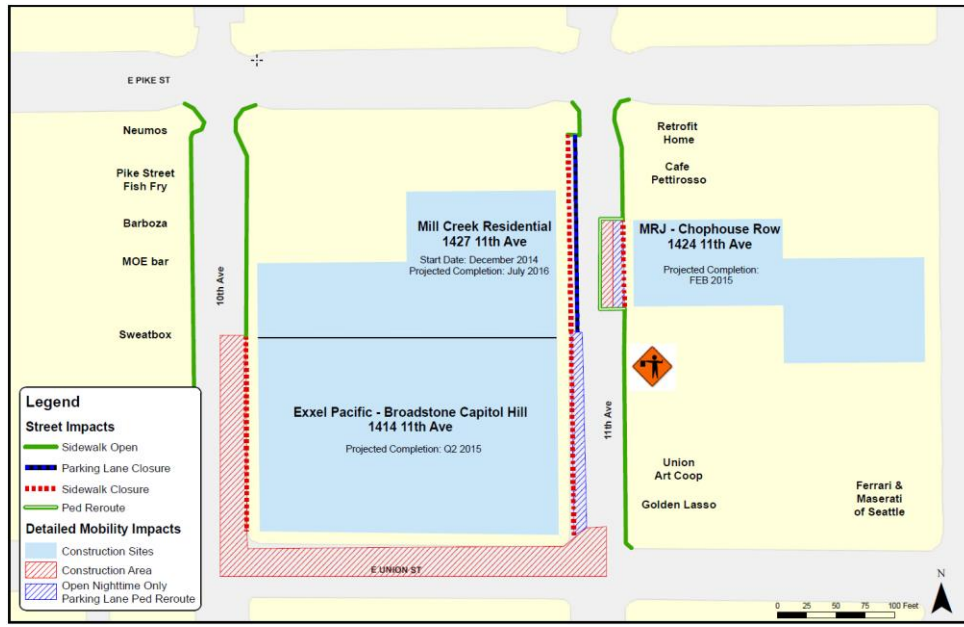
- AWV – Viaduct Independent Evaluation
 - Initial consultant scope, to be completed by early to mid-March, focuses on technical review of 2010-2014 studies of the viaduct and serviceability/safety for use of the viaduct structure.
- AWV Construction – Bertha is moving slowly into the rescue shaft



- Aurora Avenue N. lane closures: WSDOT plans to close one northbound and one southbound lane on Aurora around the clock for approximately two months beginning March 7.

11th Ave E—Capitol Hill:

- Three projects on this small street. We are actively engaged with all of the projects and working hard to maintain appropriate pedestrian access.



DIVISION UPDATES

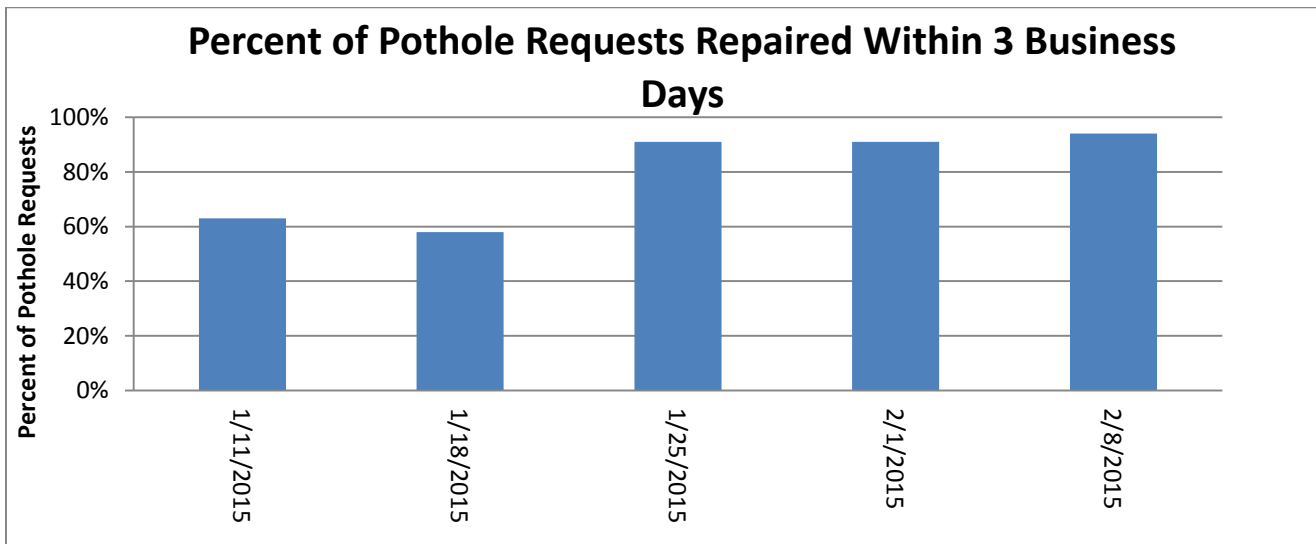
Organizational Change:

- We will soon be interviewing for a Street Use Division Director; Brian dePlace is currently the Acting Division Director

PERFORMANCE DATA

Pothole Repairs:

- Maintenance Operations responded and filled 94% of Potholes within 72 hours



Urban Forestry - Landscape Crew

- The crew restored tree pits on S Cloverdale St from 14th Ave S to 5th Ave S.
 - 80 tree pits and 4 curb bulbs were renovated
 - 10 trees were pruned
 - 8.5 yards of mulch was spread
 - The community gave high praise to the crew for their great efforts on this restoration project
- 2nd Ave curb bulbs restoration was completed from Cedar to Lenora

- Pacific & Eastern landscape clean up



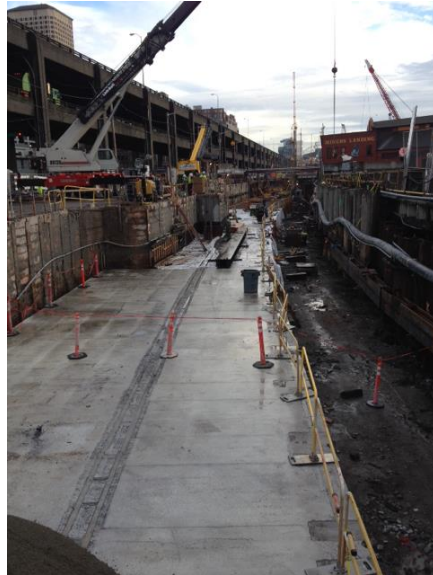
PROGRAM/PROJECT UPDATES

Seawall:

- Jet grout rig occupies space where the driveway bridges to the piers are typically located



- The fourth cast-in-place slab was cast adjacent to Waterfront Park this week. The first season two face panels are scheduled to be placed on this slab next week
- Please let us know if the committee and any other councilmember would like a tour of the Seawall project



Access Seattle:

Improved Pedestrian Access at 665 S King St

- 665 S King St Pedestrian Pathway Installation, after development had fenced off the sidewalk
- Preferred method was a pedestrian re-route in the parking lane
- Worked with contractor Marpac to install the pedestrian re-route on February 3





47th & Admiral Signal:

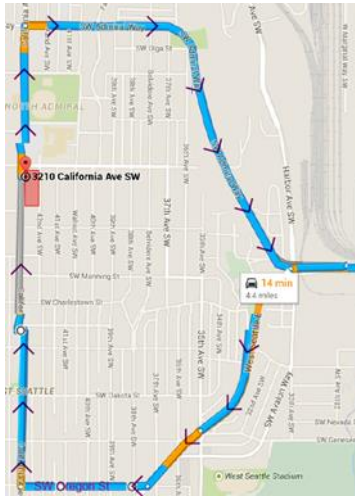
- Project staff attended Admiral Neighborhood Association meeting on February 10th
- Pre-construction scheduled for February 24
- NTP for project is anticipated for the 2nd week of March

Westlake Cycle Track:

- 90 Percent Design completed February 9, 2015
- Last DAC meeting scheduled for March 4, 2015

3210 California Ave SW in West Seattle:

- Construction activity in first phase has sidewalk and parking lane closed the next 11 weeks for this 4- and 5-story mixed-use building with approximately 134 residential units
- Anticipated completion – April 2016
- Site challenges:
 - Contractor unable to obtain crane easement from neighbors – no flyover rights
 - Unopened alley
 - Arterial frontage only



Coordinated Street Furniture:

- RFP was published February 6 with good media coverage (Seattle Times, KING-5, KOMO, and Q-13)
- Three companies have contacted us to express their intent to respond

Roosevelt Paving and Safety Project:

- Outreach
 - Met with the Roosevelt Business Association on February 4
 - Concerns include: lack of public input into where the PBL should be located; loss of on-street parking and potential impacts to businesses; ensuring their neighborhood vision is included in city planning/projects
 - Both Roosevelt Business Association/Neighborhood Association and the NE District Council are preparing letters outlining their concerns. The draft NEDC letter focuses on lack of genuine community involvement as opposed to parking loss
 - We're scheduled to meet with the Roosevelt Neighborhood Association and Roosevelt Neighborhood Alliance the evening of February 24.

BMP Implementation:

- Both of the trail segments due in 2015 are complete
- We've installed 110 bike parking spaces
- The 2015 BTG deliverable for bike lanes is 7 miles; we have nearly 11 miles in design and 7.5 miles planned for installation
- The 2015 BTG deliverable for neighborhood greenways is 12 miles; we have 12.1 miles in design and planned for construction
- We'll have a full report for you in March

Rainier Avenue S Road Safety Corridor Project:

- Dates for our second round of Rainier meetings have been set, February 26 and March 3
- The purpose of these meetings will be to review potential design alternatives for the corridor and solicit feedback

35th Avenue SW Road Safety Corridor Project:

- Dates for our second round of 35th meetings have been tentatively set for March 4 and 5

- The purpose of these meetings will be to review potential design alternatives for the corridor and solicit feedback

SW Roxbury Street Road Safety Corridor Project:

- Staff aiming to release recommendations to the public on March 10 or 11 and highlight improvements aligning with Vision Zero

Alaskan Way Viaduct near Seneca Street:

- Bridge engineers responded to a report that concrete had fallen off the Alaskan Way Viaduct near Seneca Street
- No significant defect was noted and it appears to be the continued minor deterioration of the aging structure

Cowen Park Bridge:

- Bridge maintenance crews are beginning a multiple week effort to repair some of the most severely deteriorated cross beams on the Cowen Park Bridge
- The extensive maintenance work is necessary to preserve the bridge until major rehabilitation funding can be secured
- Our recent request to the Federal bridge rehab and replacement program was not successful

Bike Share Helmet Bin Upgrades Delayed:

- Due to a delay in delivery of one of the locking mechanism components, the helmet bin upgrade scheduled for February 15 is postponed – likely until the first week of March

Ninety attendees representing over 45 companies to attend February 12 CTR Awards Breakfast:

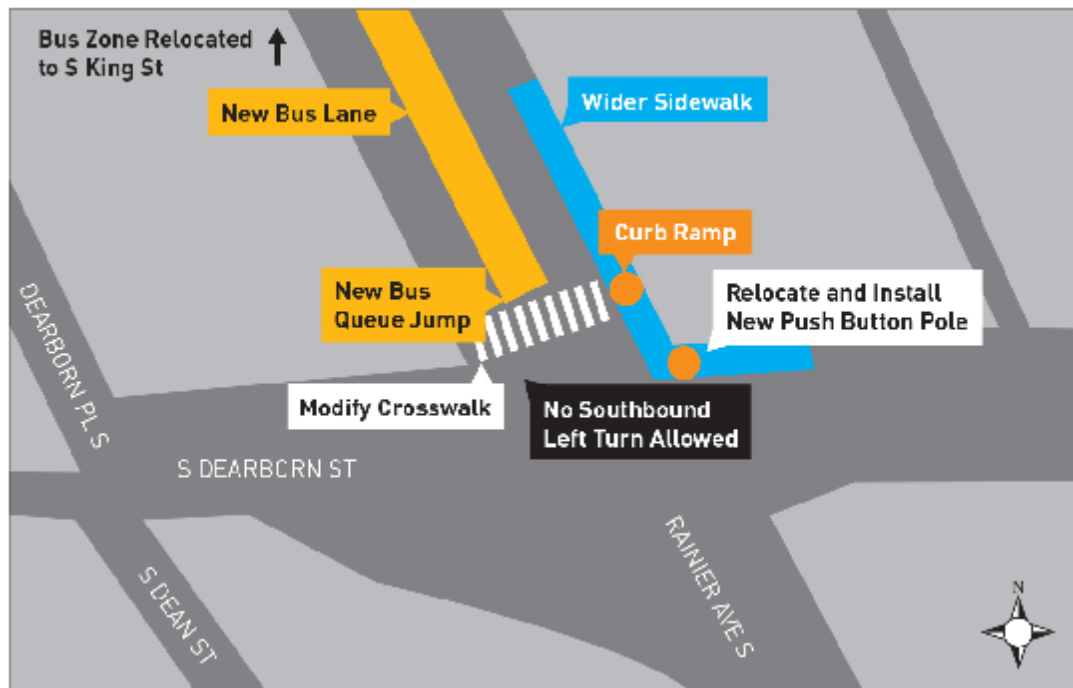
- The event's purpose is to acknowledge the importance of strong employee commute programs and recognize companies that provide outstanding programs through trip reduction performance, direct services/products to their employees, and active engagement.

King Street Station:

- SDOT and OED met with the Alliance for Pioneer Square, Chinatown BIA and SCIDpda to discuss the leasing of space in King Street Station
- The parties all agreed that food and beverage uses at the King St level and northwest side of the plaza level are desired to activate those spaces, while office uses generating revenue to support the build-out of the tenant spaces are the priority for the remaining second and third floor spaces
- The community organizations are interested in taking on a more active role in the marketing and leasing of these spaces, using their existing retail recruitment resources. They plan to draft a proposal for an agreement toward this end

Rainier and Dearborn Southbound Queue Jump and Bus Bulb:

- The 100% design plans for the bus bulb at Rainier Avenue and Dearborn Street are complete. Staff met with adjacent business owners to discuss the upcoming construction schedule and activities.
- Bids have been submitted for constructing the bus bulbs portion of this project. Project is scheduled to tentatively begin in March 2015 with planned completion in June 2015



Sound Transit 3 (ST3) – System Plan:

- On February 5, Sound Transit presented the ST3 System Plan timeline to the Executive Committee. Key efforts of the work plan are shown below:
 - Develop System Plan Core Priorities (Jan. – Feb. 2015)
 - Develop Methodology and Initial Evaluation Measures (Feb. – Mar. 2015)
 - Evaluate Conceptual System Expansion Scenarios (Apr. – May 2015)
 - Develop Priority Projects List / Public Involvement (June – July 2015)
 - Testing and Evaluation of Priority Projects List (July – Dec. 2015)
 - Develop Draft System Plan / Public Involvement (Jan. – Mar. 2016)
 - Final System Plan Development (Apr. – May 2016)
 - Adopt System Plan (June 2016)
 - Possible Vote on System Plan (Nov. 2016)

New Parking Pay Stations:

- The first IPS retrofit parking pay station, the Rev1, was received January 22
- Testing continues on the Rev 1 as well as the previously received brand new MS1 pay station
- The schedule continues to show the first installations occurring in early Q2 in Pioneer Square

First Hill Public Realm Action Plan:

- Interim designs qualified for funding from the Stim Bullitt Excellence Fund through the Seattle Parks Foundation
- The project could receive up to \$80,000 in funding toward implementation of interim designs this summer
- First Hill Improvement Association submitted a grant to the Department of Neighborhoods to develop a programming and maintenance plan for the Interim Designs; this funding would include activation events and the development of performance metrics

Fauntleroy Boulevard Project:

- The project team met with two businesses last week to discuss the 60% design and impacts to their property frontage
- In addition, the project team met with SPU to discuss project drainage requirements
- One property owner has continually expressed his disagreement with the bicycle facility and reduction in left-turn access for small businesses
- The project manager is meeting with SCL to determine cost and scope of designing the civil improvements associated with the undergrounding of the power distribution
- The design is on hold until cost of SCL undergrounding is resolved

Transportation Operations Center (TOC) – 16 Hour Operations:

- SDOT TOC extended coverage to 16 hours per day on weekdays (6am – 10pm) and 8 hours on weekends (10am – 6pm) in December
- Beginning January 5, 2015, the TOC further extended hours to 16 hours/day (6 am – 10 pm), seven days/week and also remained available during the off hours to achieve 24/7 capability
- The total number of incidents that were monitored and managed increased by approximately 40% in December over the previous months' average and another 40% in January

WMBE:

- Although SDOT may have fewer consulting type prospects for 2015, we will have an increased focus on key drivers for our performance. These drivers include, but are not limited to:
 - Continued Goal Monitoring and Enforcement
 - WMBE performance monitoring on existing contracts that will still be active in 2015– our present monitoring and enforcement practices were not standard for the whole year in 2014
 - New tools (Consulting)
 - Revised *Consultant Contract Request Form* now prompts for WMBE availability assessment at procurement request – this wasn't standard practice in 2014
 - New tools (Purchasing)
 - WMBE Opportunity Review form will be piloted in Quarter 2 and will prompt WMBE availability at procurement request– – this wasn't standard practice in 2014
 - External Outreach & Engagement
 - Aside from presence at regular events, we have launched our own *Working with SDOT 101* event series to inform the community of opportunities with SDOT and how to engage with us – this did not exist in 2014
 - Internal Training
 - WMBE Advocate Program will strengthen inclusion message within SDOT – this did not exist in 2014

SDOT Outreach and Important Dates

- Bike Youth Summit: February 13
- West Duwamish Trail opening
- Pedestrian Master Plan update
- Delridge Way SW pedestrian improvements
- SDOT Dashboard launch
- Shoreline street end at 51st Ave NE construction
- Architectural and Engineering Consultant Business Opportunities forum: February 25

- Move Seattle launch
- 23rd Avenue Corridor Project's March 5 open house (tree removal)
- North Beacon Hill Pedestrian Improvements
- Construction start for 47th & Admiral signal
- Central Area Greenway construction start
- Construction start for Rainier and Dearborn Route 7 improvements
- Lake City Way and 24th NE safety improvements for pedestrians and transit
- SW Roxbury St Road Safety Project announcement of recommended alternatives
- Access Seattle hackathon (Hack the Commute)
- Georgetown Festival Street construction