

East Marginal Way North Segment

City Council Transportation &
Seattle Public Utilities Committee

Megan Hoyt, Project Manager

December 5, 2023

Our Vision, Mission, Values, & Goals

Seattle is a thriving equitable community powered by dependable transportation. We're on a mission to deliver a transportation system that provides safe and affordable access to places and opportunities.

Core Values & Goals:

Equity, Safety, Mobility, Sustainability, Livability, and Excellence.

Agenda

- Project overview
- Proposed legislation
 - CB 120723 Accepts deed for street purposes from King County
 - CB 120715; CB 120713 Revises franchise agreements granting railroad rights in the Whatcom Yard



North Segment

East Marginal Way S



North Segment Project Goals



Improve freight mobility and access



Promote efficiencies in freight movements



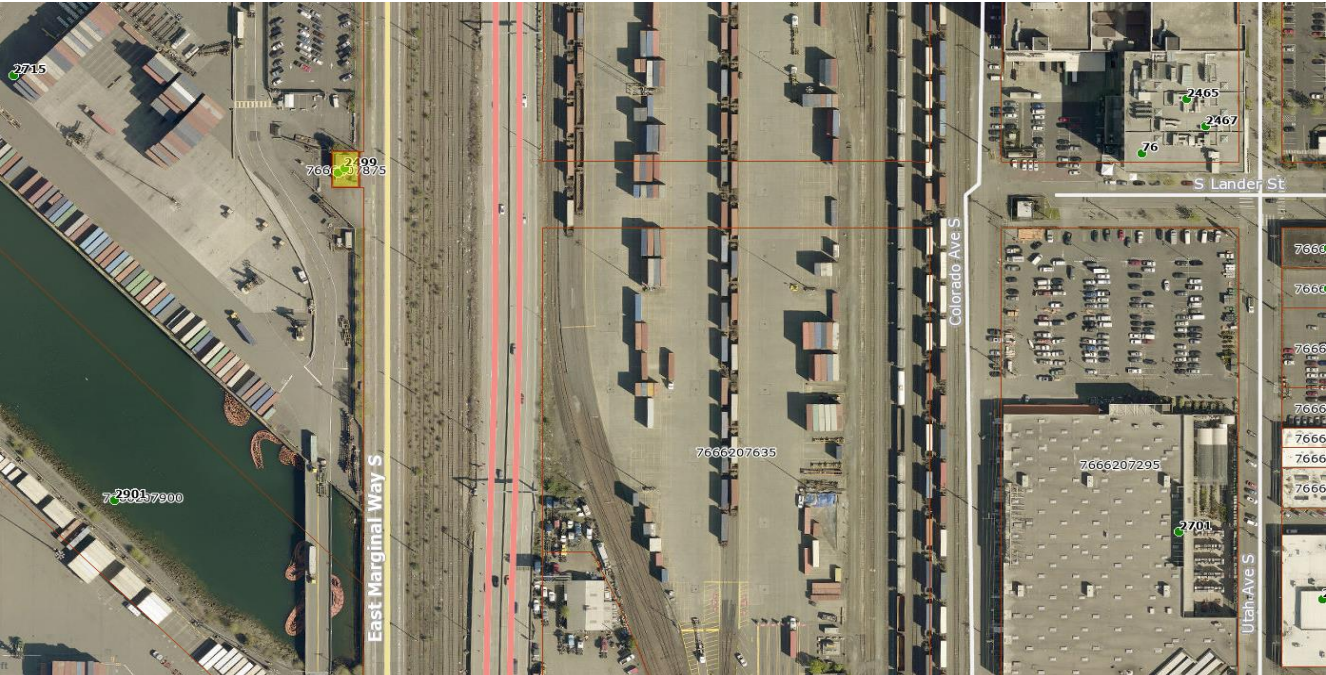
Enhance separation for people walking and biking



CB 120723 East Marginal Way South Deed Acceptance

The proposed legislation:

- Accepts a deed for street purposes from King County
- Places the deed under SDOT's jurisdiction
- Incorporates ("lays off") the property as City right-of-way



Property Acquisition

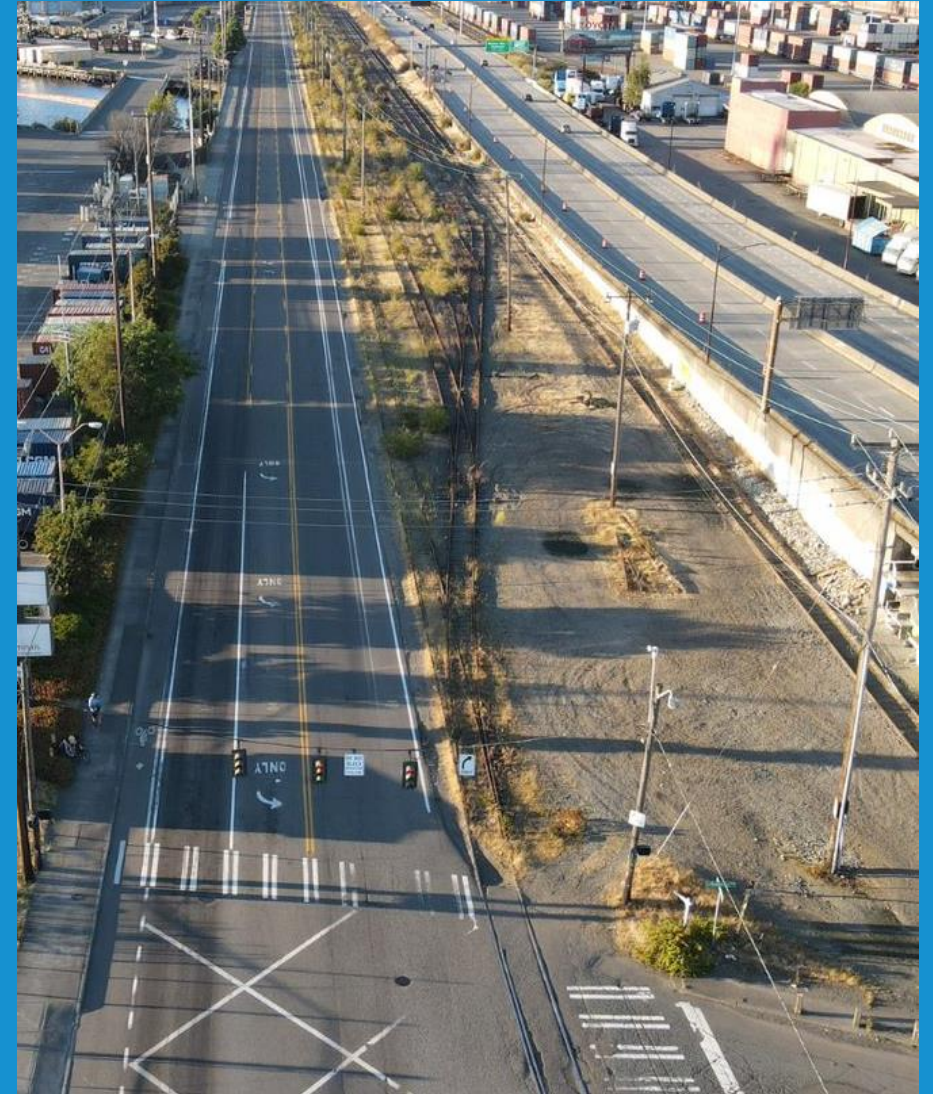
- The acquired property totals approximately 275 square feet and abuts East Marginal Way S in the vicinity of Pier 30
- The acquisition formally transfers property to the City that is currently being utilized as an existing sidewalk and lays it off as right-of-way.
- The City paid King County \$28,400 for the property



Whatcom Yard Franchise Agreements CB 120715, CB 120713

The proposed legislation amends the legal descriptions of two railroad franchise agreements:

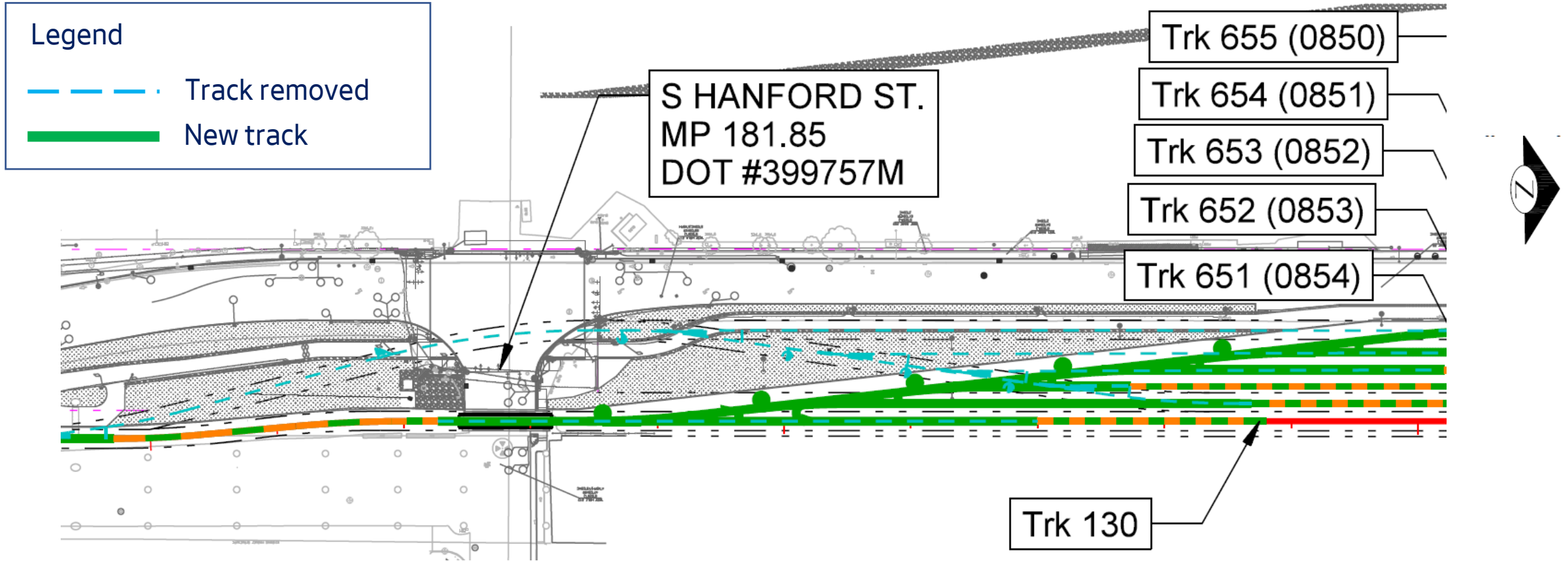
- Removes areas that no longer have railroad track
- Revises areas that will be reconfigured by the project



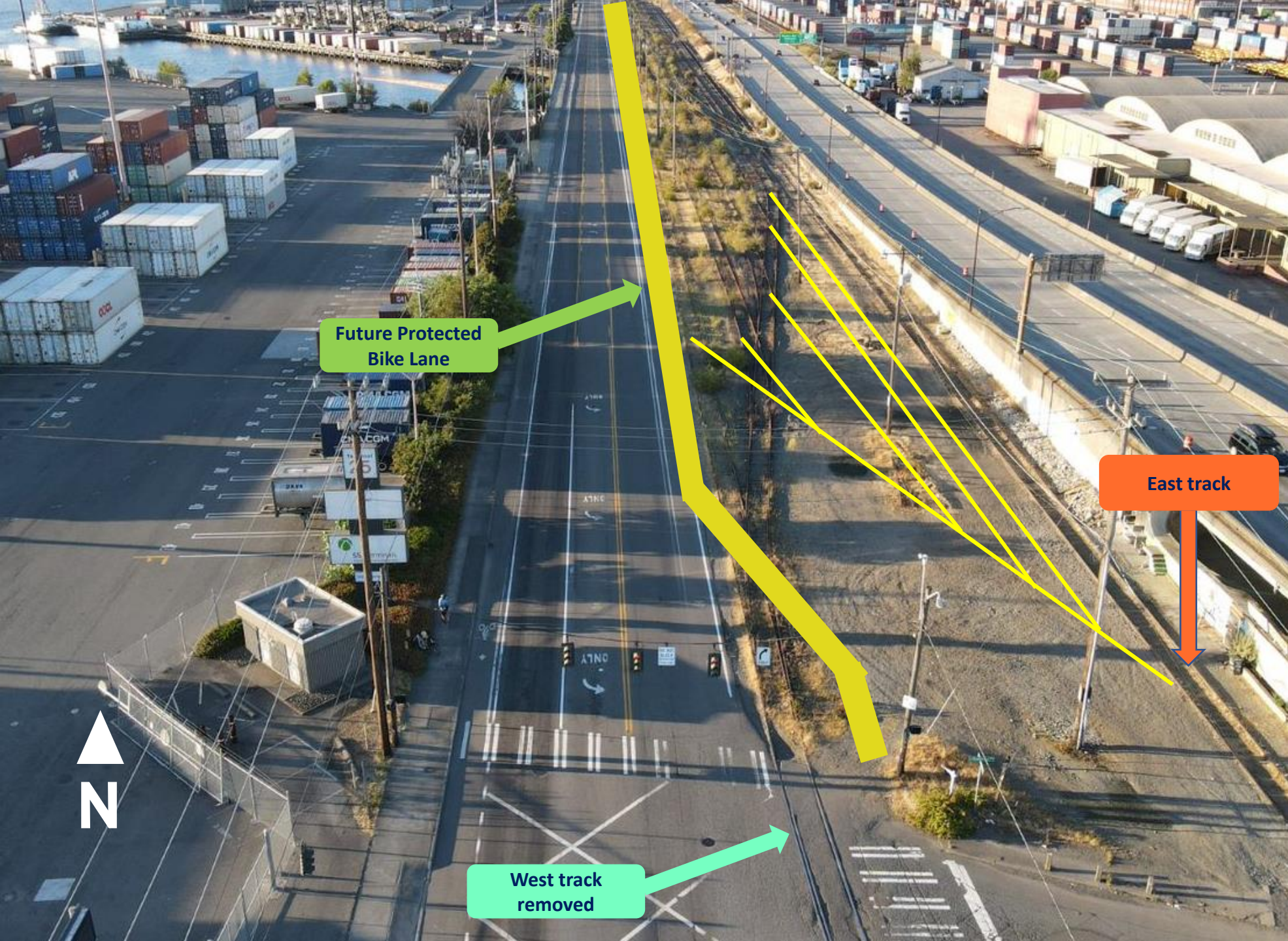


Franchise agreement limits amended to match future track locations
Franchise rights removed because track has been removed

Whatcom Yard reconfiguration



Whatcom Yard redesign triggered by safety improvements at S Hanford St



Future Protected Bike Lane

West track removed

East track



Questions?

Stay in touch:



EastMarginal@seattle.gov



206.257.2263



seattle.gov/transportation/eastmarginalway

From the entire SDOT Team:
Thank you!

