

# Office of Arts & Culture RSJ Update

Neighborhoods, Education, Civil Rights & Culture Committee  
Chair: Councilmember Tammy Morales

Friday, September 23, 2022

9/20/2022

ARTS

ARTS RSJ Strategic Framework



City of Seattle

# Overview

- Office of Arts & Culture (ARTS) RSJ Strategic Framework
- Impact and Assessment of ARTS RSJ Investments

## Presenting:

- royal alley-barnes, Acting Director
- Maritza Rivera, Deputy Director



# ARTS RSJ Strategic Framework

## Racial Justice:

Systematic fair treatment of people of all races, resulting in equitable opportunities and outcomes for all.

## Social Justice:

- Seeks fair (re)distribution of resources
- Challenges the roots of oppression and injustice
- Empowers all people to exercise self-determination
- Builds social cohesion



Rise Up, 2017. Yvonne Chan. Print, Inkjet Print (created with digital vector). Seattle Public Utilities 1% for Art Portable Works Collection

## ARTS Strategic Framework

- Awareness
- Capacity Building
- Action

# SOCR's RSJ Guiding Anti-Racist Principles

'People's Institute for Survival and Beyond'

- Analyzing power
- Developing leadership
- Gatekeeping
- Identifying and analyzing manifestations of racism
- Learning from history
- Maintaining accountability
- Networking
- Sharing culture
- Undoing internalized racial oppression
- Undoing racism



# Awareness - An ongoing process of listening

- **Community Connections = Positive RSJ Outcomes**
  - ARTS CAP Report: 30 Ideas for the Creation, Preservation and Activation of Cultural Space (2013)
  - ARTISTS UP Report (2015-2017)
  - Inclusive Creative Economy Report (2019)
  - ArtsFund State of the Arts Sector (2022)
  - PSRC Arts and Culture Economic Recovery Strategy (2022)
  - American for the Arts': Arts & Economic Prosperity 6 (2023)

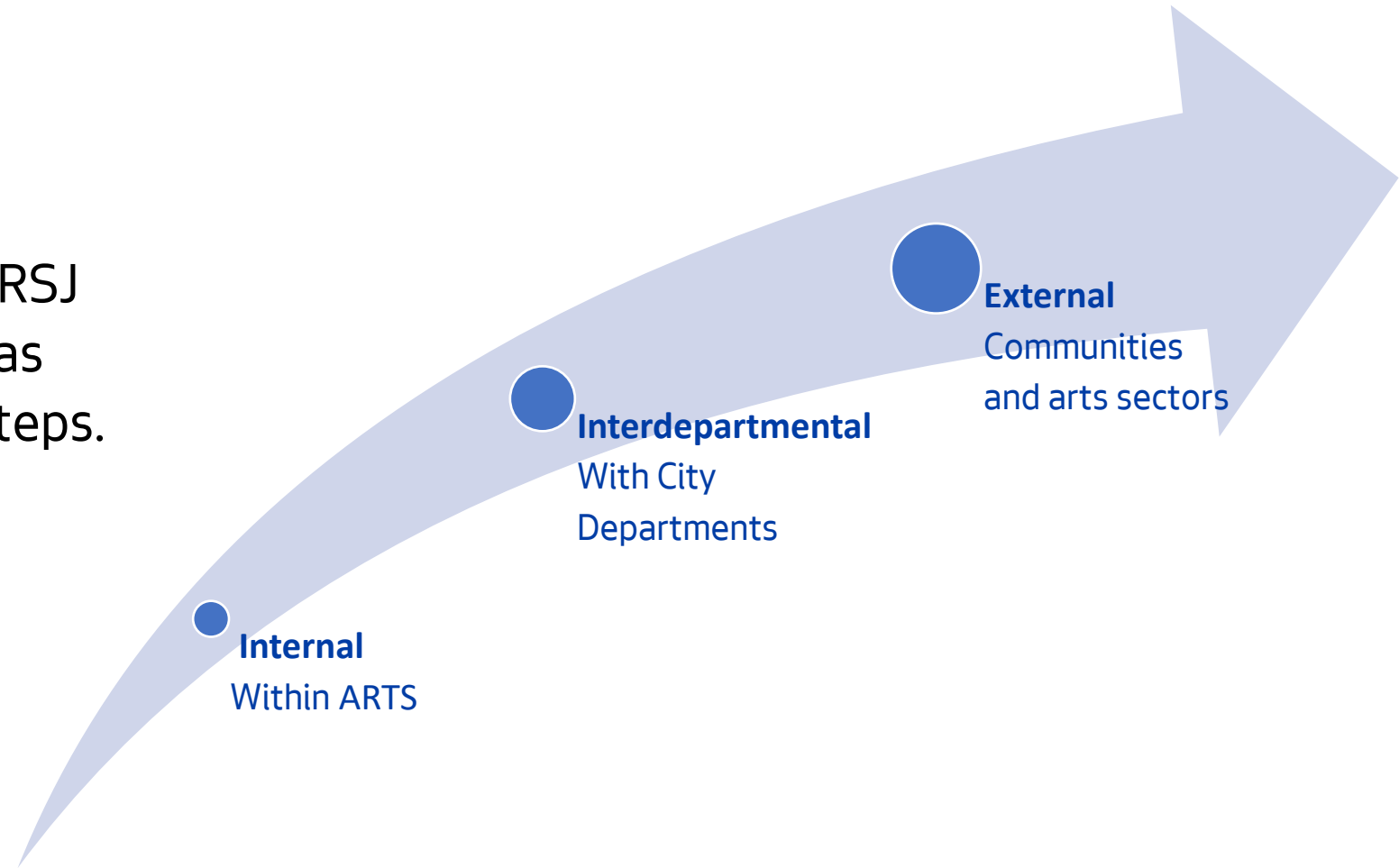


The Creative Advantage Summer Institute, 2019.  
Photo courtesy Seattle Office of Arts & Culture

# Capacity Building – An interdependent commitment

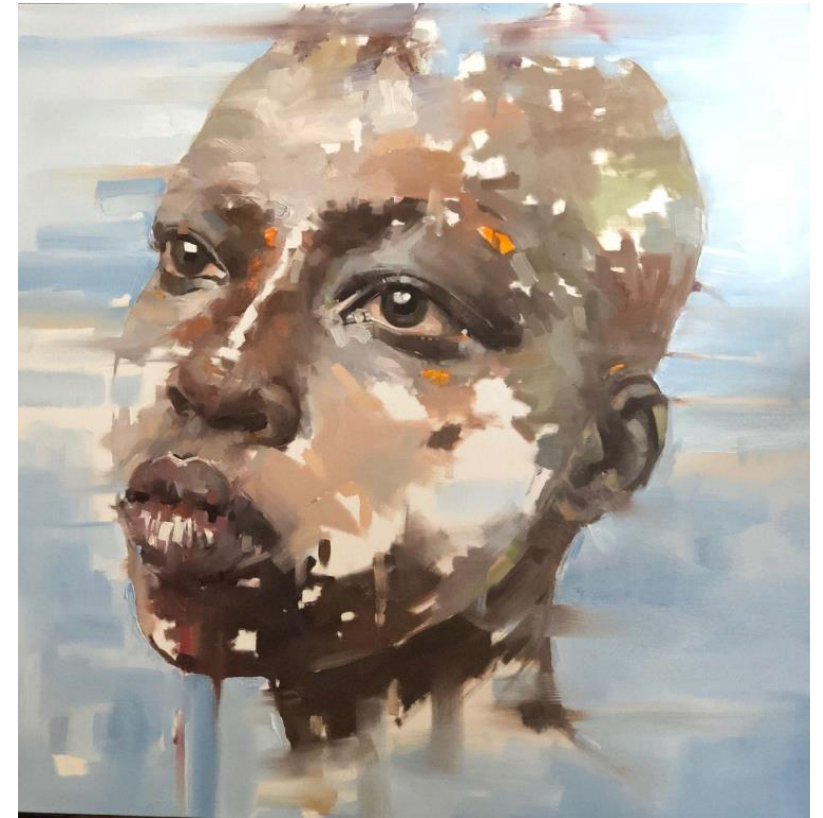
## 2022-2023

Operationalizing ARTS RSJ Strategic Framework has three interconnected steps.



# Capacity Building – Internal Connections

- ARTS' Indigenous Land Acknowledgement creates continual awareness for people and place
- RSJ staff focuses and guides ARTS RSJ trajectory
- RSJ training for all staff as a collective commitment
- BLU Matrix embedded as an equity guidepost
- Race-aligned caucus groups are engaged and maintained
- Community-based mission driven funding is a priority
- Continue assessing demographic information for RSJ impacts



**Beneath the Colors and Beyond the Strokes,**  
2018. Tsehaye. Painting, oil color on canvas. Seattle City  
Light 1% for Art Portable Works Collection

# Capacity Building - Interdepartmental Connections



- **OCR** - RSJ trainings
- **Capital Departments** - 1% for Art (SCL, SPU, SDOT, SPR)
- **OED** - Economic opportunities
- **DEEL** - Youth arts education
- **FAS** - WMBE
- **OPCD** - Strategic Investment Fund

Jenga (South Lake Union), 2016. Julia Chamberlain. Glass.  
Seattle Public Utilities 1% for Art funds



# Capacity Building - External Connections

- **Participatory** grant making with community members
- **Mentoring** and social cohesion for artists
- **Redesigning** application processes to remove barriers
- **Awarding** recovery ARPA and CLFR funding, with a focus on underserved communities
- **Collaborating** with art funding partners



Eight Builders, 1982. Jacob Lawrence. Painting, gouache on paper. Seattle City Light 1% for Art Portable Works Collection

# Action - Leading with Race

## ARTS 2020-2021 RSJ Program Analysis

**Leading with Race** requires intentional BIPOC and broader community connections.



Alignment, 2018. Maya Milton, mixed media. Seattle Public Utilities 1% for Art Portable Works Collection



Top: Raven Moon, 2019. Patrick Amos. Red cedar, paint, cedar bark. Seattle City Light 1% for Art Portable Works Collection



Top Left: Bound 2, 2010. Diem Chau. Porcelain plate, organza, cotton fabric and thread. Seattle City Light 1% for Art Portable Works Collection



Bottom Left: Looking North Being Pushed South, 2019. Nico Inzerella. Wheat paste on wood panel. Seattle Public Utilities 1% for Art Portable Works Collection

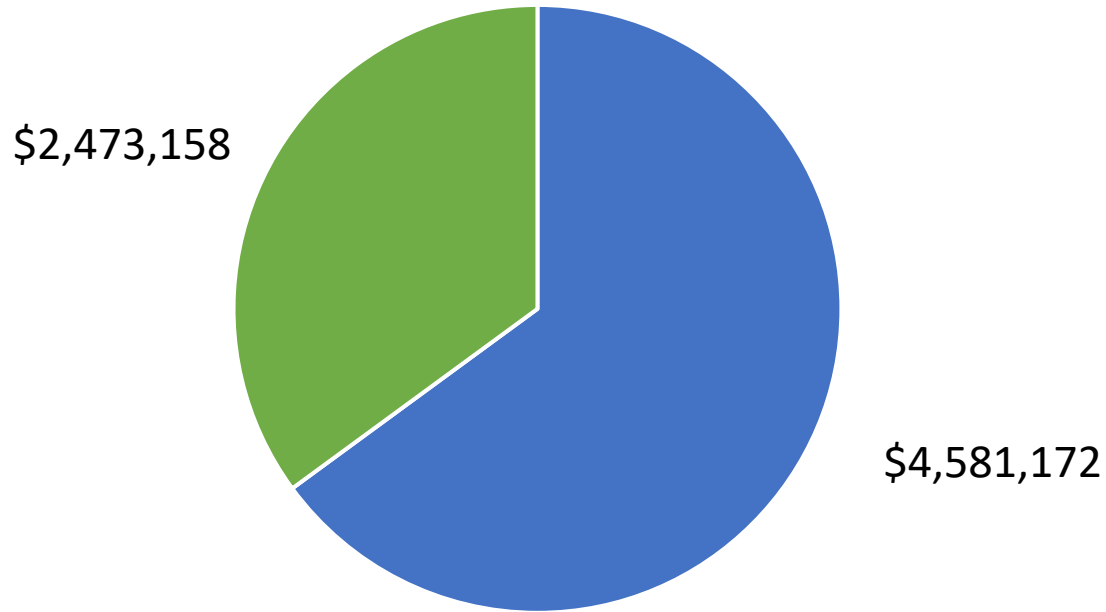
# Grantmaking and Public Art Commissions

Cumulative Awarded Dollars in Year 1 of the Pandemic

**\$7,054,330**

**(March 2020- March 2021)**

**457 Individual Artists**  
\$2,473,158  
(35%)



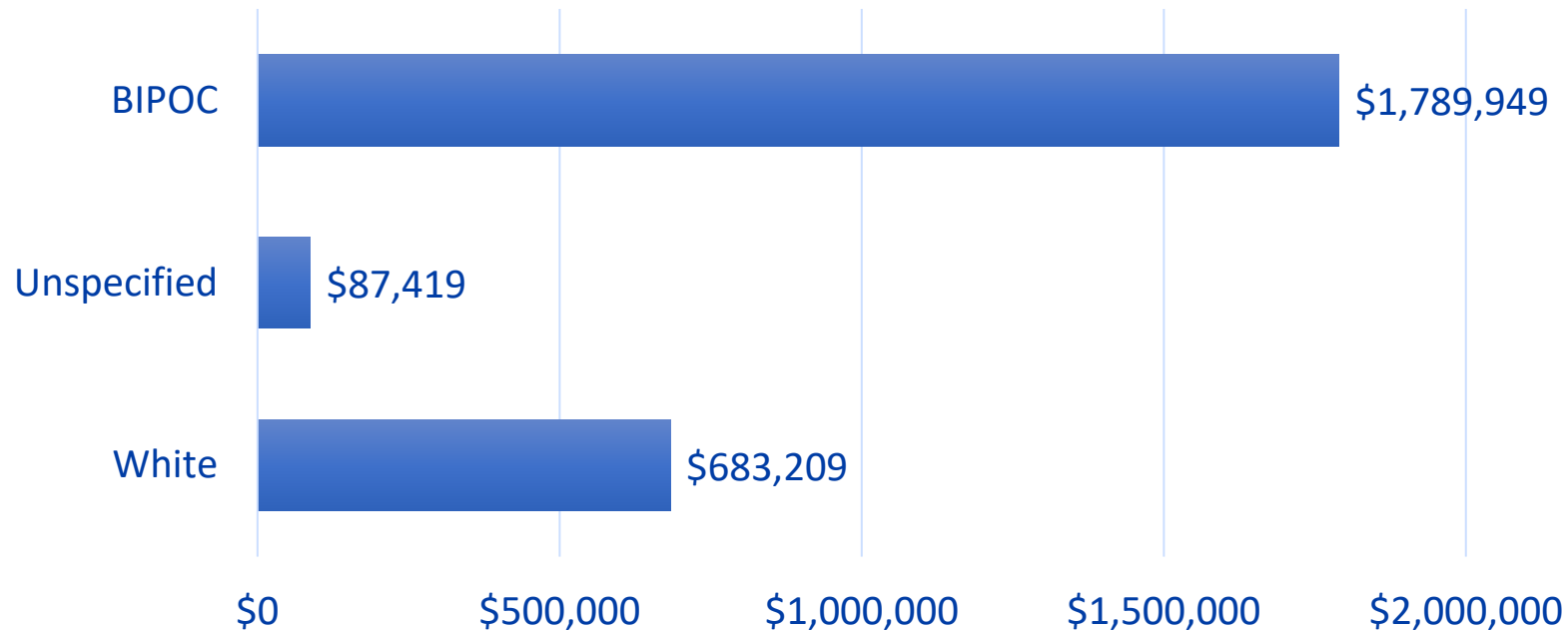
**565 Cultural Organizations\***

\$4,581,172  
(65%)

*\*Within these organizations, tens of thousands of creative workers and vendors/contractors are additionally employed as a result of ARTS funding.*



## Cumulative Awarded Dollars to Individual Artists (March 2020-March 2021)



- 77% awarded to 354 BIPOC individual artists
- \$1.79M cumulatively awarded to BIPOC individual artists

# WMBE Eligible Artists and Arts Organizations 2021



My Ancestors Got My Back,  
2019. Jake Prendez. Oil on  
canvas. Seattle Public Utilities 1%  
for Art Portable Works Collection

**WMBE eligible artists and arts organizations need mentoring to complete the necessary steps for WMBE status.**

## Consultant Contracts

- 50.1% of dollars awarded to women-owned or minority-owned firms
- 2.1% awarded to WMBE certified consultants

## Purchasing Contracts

- 25.15% of dollars went to women-owned or minority-owned firms
- 1.78% went to WMBE certified firms

## 2022-2023 Action

ARTS is continuing to work with FAS to create mentoring sessions for WMBE eligible artists and arts organizations to support them in completing WMBE certification

# Action – Cultural Humility

**Cultural Humility** - valuing the differences presented by and within a wide range of cultures.



ARTS at King Street Station, photo by Trevor Dykstra

## Galleries

- Emuseum Seattle Civic Art Collection
- ARTS at King Street Station Gallery
  - City Hall Lobby & Anne Focke Galleries
    - Seattle Municipal Tower Gallery
      - Ethnic Heritage Gallery
        - Power Station Pedestrian Gallery

## 1% for Art



- 1% for ART puts artists' works into public spaces
- 1% of eligible city capital improvement projects

Black Sun, 1969. Isamu Noguchi. Brazilian black granite. Gift to the city of Seattle from the Seattle Foundation with additional support from the National Endowment for the Arts

# ART's RSJ Narrative is more than Statistics

## 'A Note to Remember from the American for the Arts'

- Nonprofit (*and for profit*) Arts and Culture Organizations are businesses
- The Arts Drive Commerce to Local Businesses
- Arts Travelers are Ideal Tourists
- Small investments - Big Returns



**Thank you for being on  
this journey with us.**

**Coffee on my Mind, 2009. Mary Ellen Bowers. Up-cycled  
credit cards, library cards and retail gift cards  
Seattle Public Utilities 1% for Art Portable Works Collection**

