

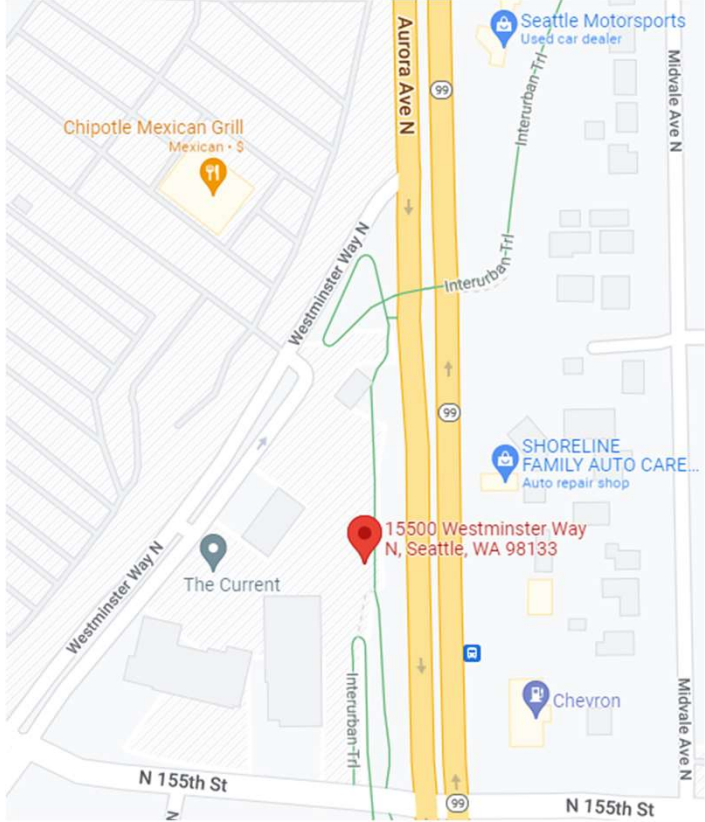
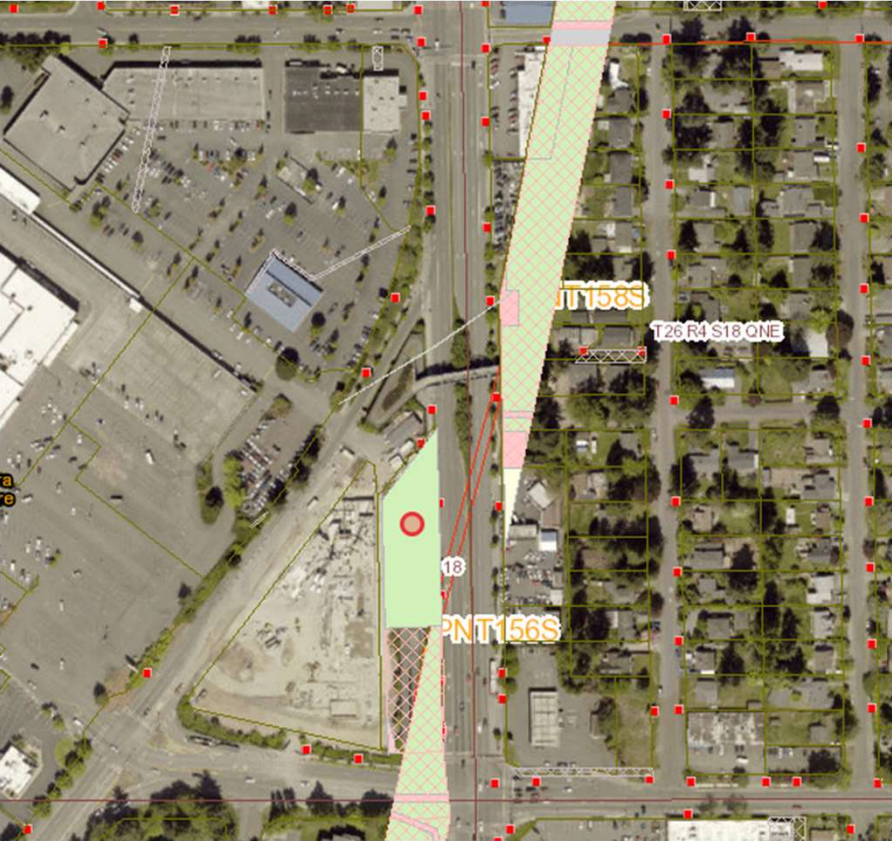


Shoreline Easement Ordinance

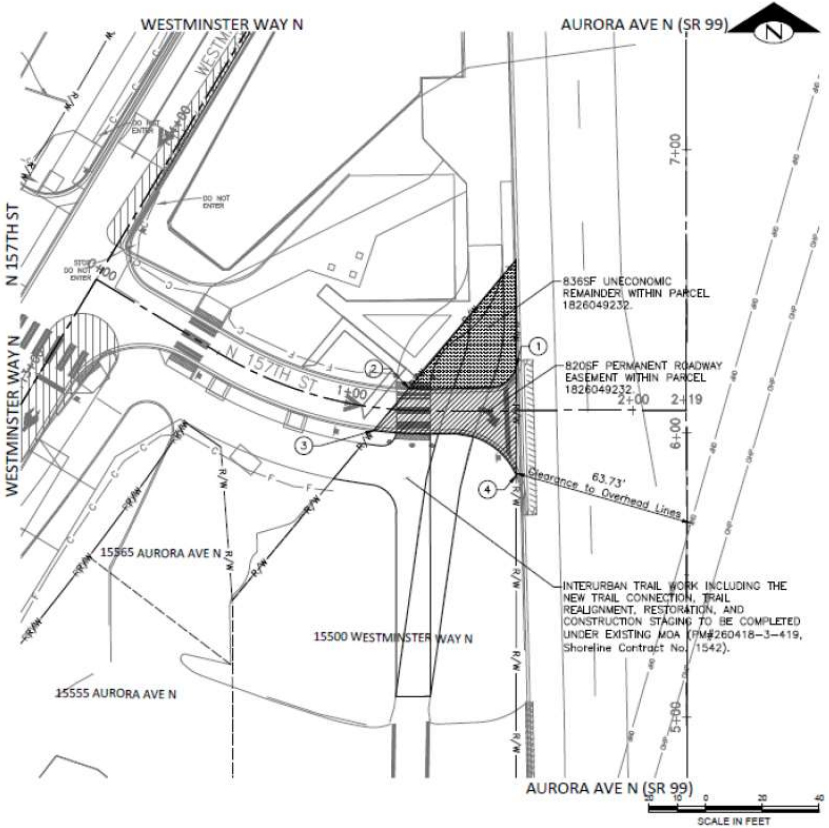
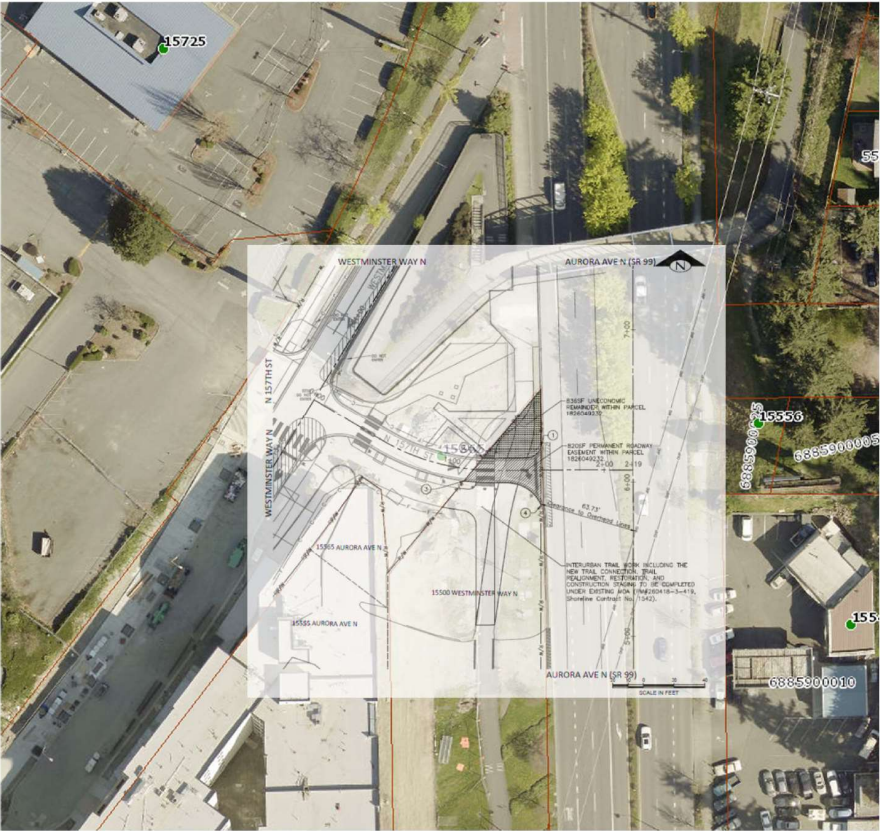
Economic Development, Technology & City Light Committee

December 14, 2022

Easement Location – City of Shoreline



Easement Purpose



Easement Summary

- Easement area is a portion of City Light's existing transmission corridor within the City of Shoreline
- Preserves City Light's rights necessary for safe and reliable transmission of electricity
- The easement area will be used by the City of Shoreline as part of its roadway system
- Increases the safety and functionality of the inter-urban trail with a revised connection for non-vehicular passage over Aurora Ave N

What the Ordinance Does

- Declares easement area surplus to City Light's exclusive use.
- Authorizes granting of easement and acceptance of payment in the amount of \$33,000 from the City of Shoreline.

THANK YOU



Seattle City Light