

City Hall Park Intergovernmental Land Transfer

Seattle City Council Public Assets and Homelessness committee meeting

July 6, 2022

2:00 PM

King County Council Motion 15955

In concert with direction from the council, Executive Constantine worked with then Mayor Durkan to propose a transfer of City Hall Park to the county in exchange for county owned property within the Seattle city limits.

The King County Council adopted this proposed transfer through Ordinance 19379 on December 14, 2021.

Photo of Property to be received by King County

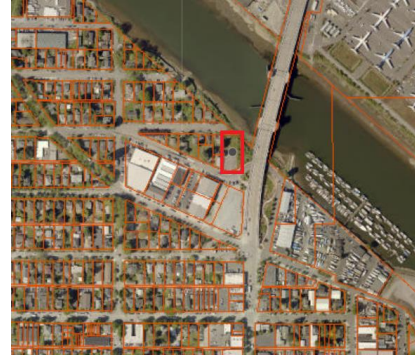


Address of Property to be Received by King County:

400 Third Avenue, Seattle

Photo of Parcels to be Received by City of Seattle:

Roads Property: 1239 S Rose Street, KCPN 218500-0895



Wastewater Property: Cesar Chavez Park: 700 S Cloverdale St, KCPN 788360-3130



Metro Property: 1403 NW 54th Street, KCPN 276830-0455

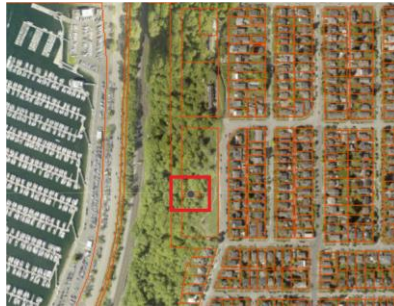


Tax Title and Facilities Properties:

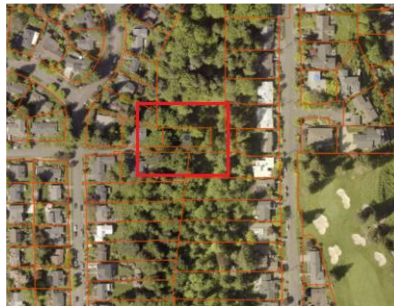
Cesar Chavez Fragment 8401 7th Ave S, KCPN 788360-2915



Sunset Hill Viewpoint Park, KCPN 047200-1460



Inverness Ravine, KCPN342604-9188



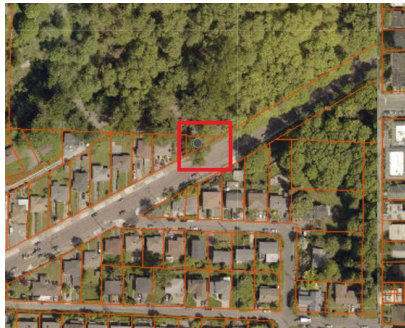
W Duwamish GB – SW Othello, KCPN 211520-0100



E Duwamish GB – S Massachusetts, KCPN 539260-0080



Cheasty Green Space – S Columbian Way, KCPN 417460-0014



E Duwamish GB – 10th Ave S, KCPN 395940-1891



Burke Gilman Greenway – S, KCPN 735220-0730



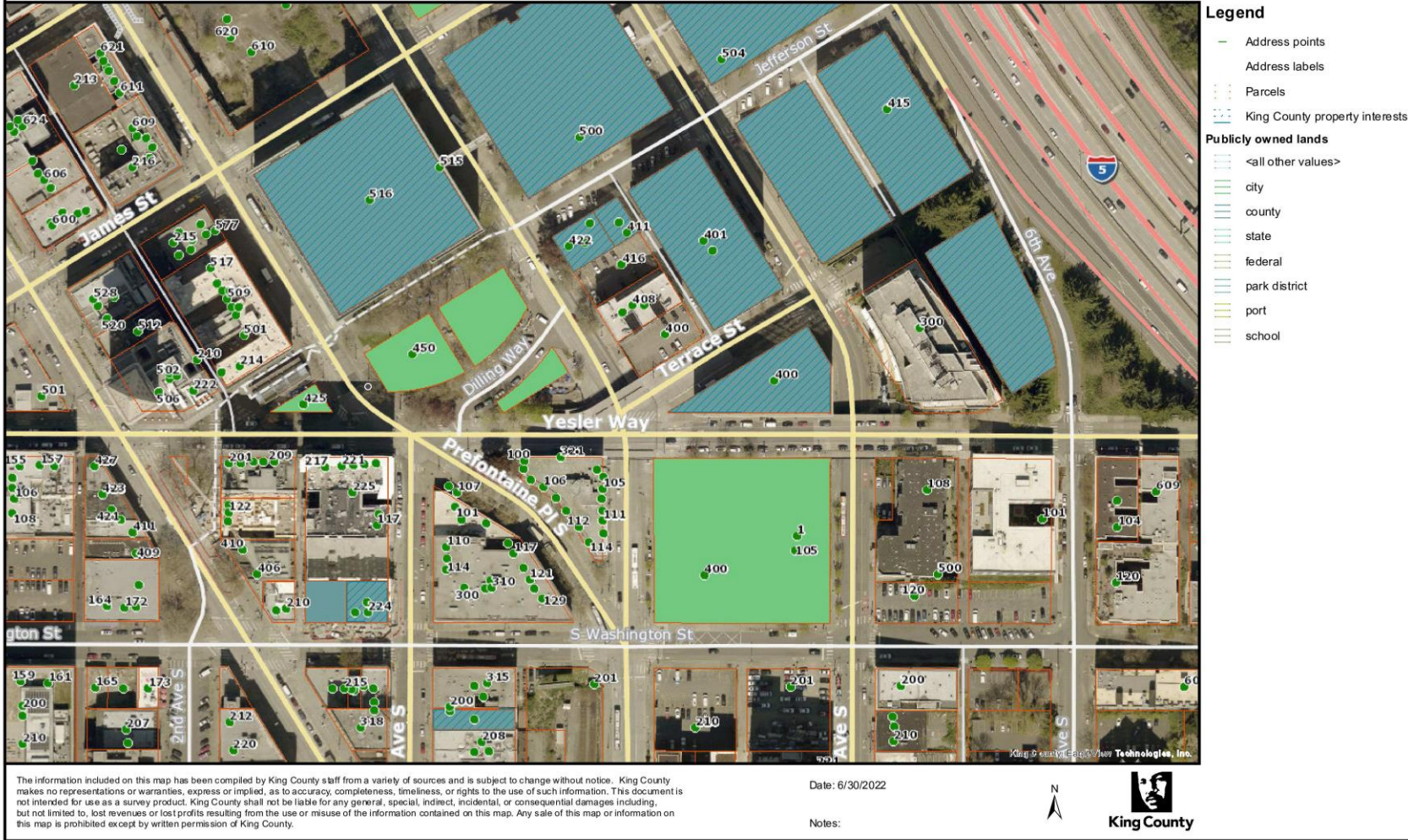
Burke-Gilman Greenway – N, KCPN 882090-2280



Duwamish Head GB – SW Walker St, 915160-0735



King County iMap



Upon transfer, King County's first priority is the safe reopening of City Hall Park. The county is committed to a public process prior to activation of the park, and it will remain green space.

The acquisition of City Hall Park by the County would inform and relate to the current civic campus planning initiative by offering a consistent ownership framework with a range of strategies aimed at increasing the viability of the City Hall Park as part of a holistic, safe, and welcoming urban environment.

We will work with community partners to develop and evaluate options for park activation, and the potential revival of the Courthouse south entrance.



Circa 1949



Circa 2018

