

Duwamish Basin Steward ILA

Transportation and Seattle Public Utilities Committee

December 6, 2022

SEATTLE
CITY HALL



Today

Seeking approval to authorize execution of a new Interlocal Agreement:

- cost-share a new Duwamish Basin Salmon Recovery Steward
- With King County, City of Tukwila and Port of Seattle



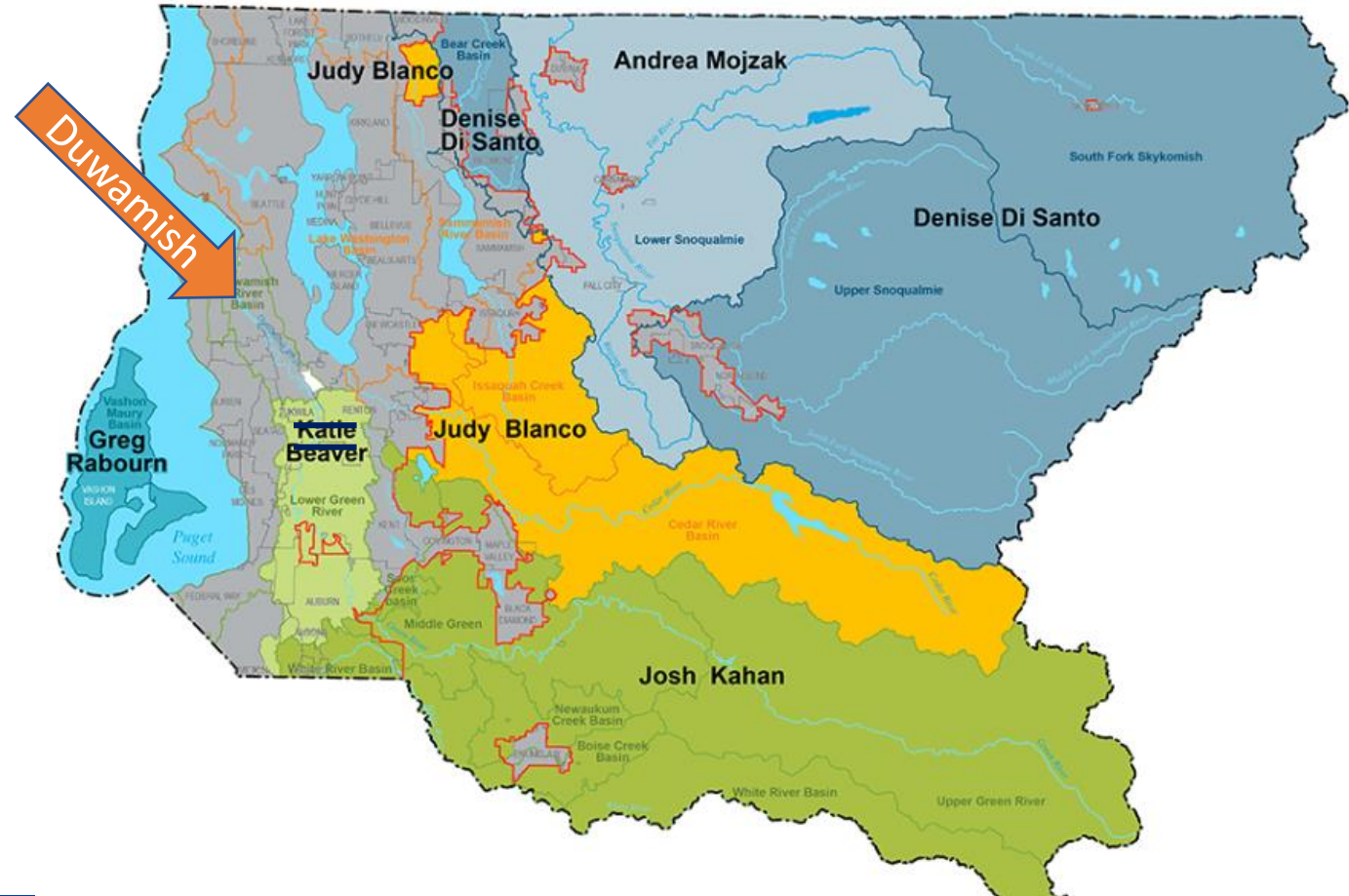
King County Basin Stewards

Water and Land Resources Division

Basin Stewards

- Advance implementation of salmon habitat plans
- Improve community engagement and partner coordination
- Amplify positive outcomes
 - Leverage resources
 - Accelerate project delivery
 - Prioritize and plan habitat restoration projects
 - Work with public and private partners, including landowners
 - Pursue grant funding

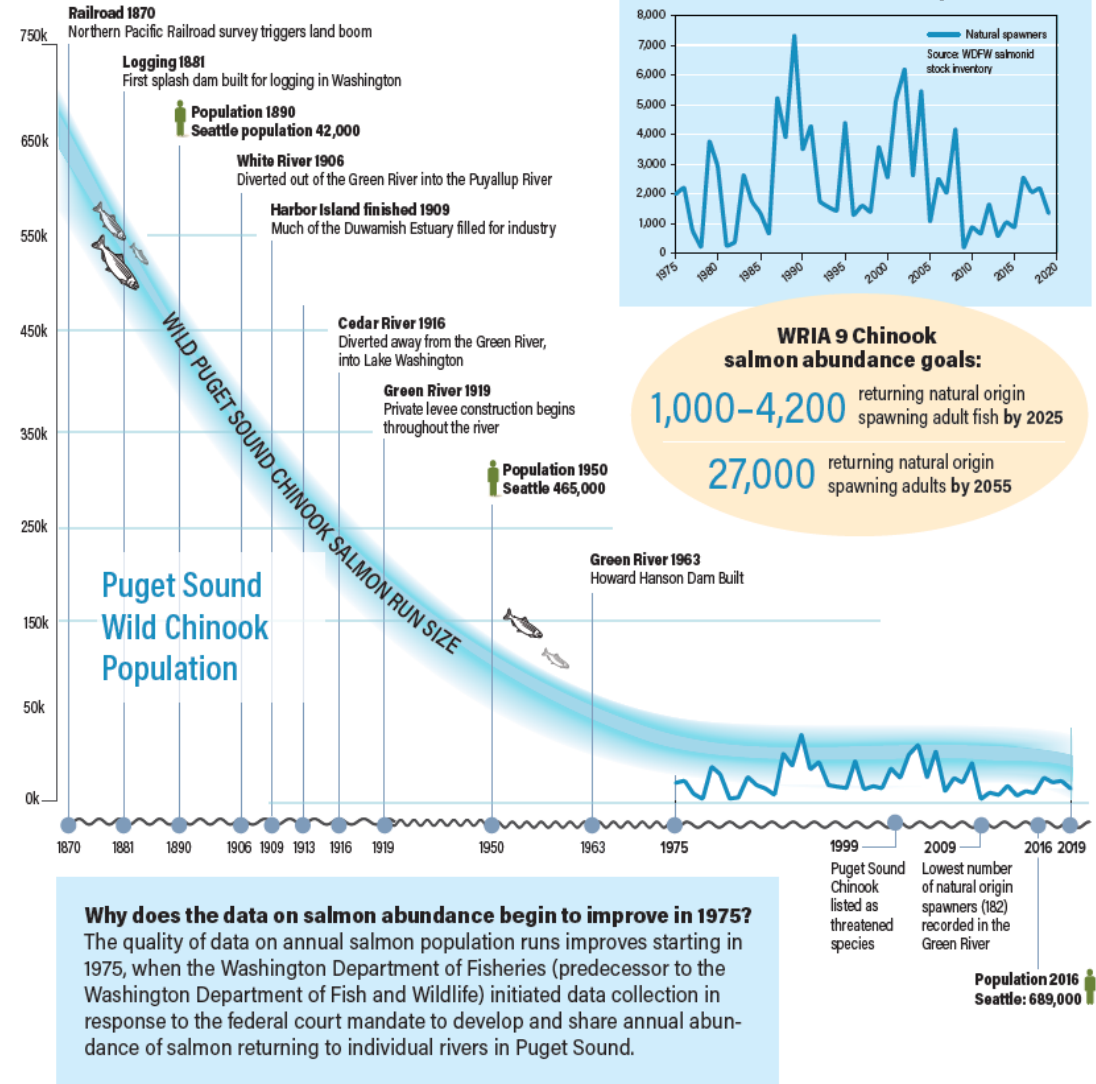
Who are the Basin Stewards?



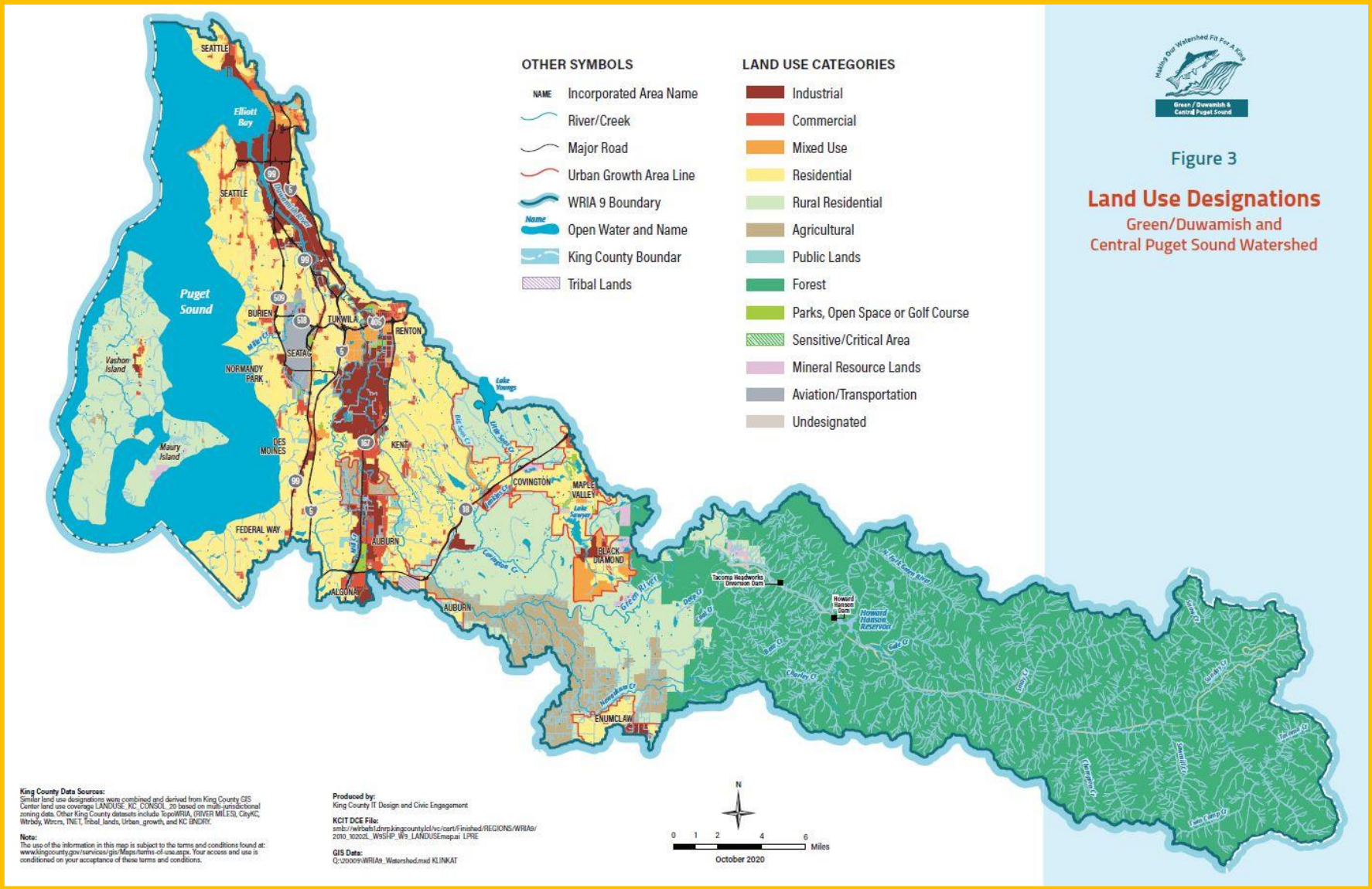
Chinook Recovery Overview

- 1999 - ESA Listing of Puget Sound Chinook
- 2001 WRIA 8 (Cedar-Sammamish) and 9 (Green-Duwamish) interlocal agreements first signed
- 2001 Seattle Urban Blueprint for Salmon Habitat Protection and Restoration (City of Seattle)
- 2005 WRIA 8 and WRIA 9 Recovery Plans
- 2007 Puget Sound Regional Recovery Plan (NOAA approved)
- 2021 - WRIA 9 updated Salmon Habitat Plan to guide work

Chinook Salmon Recovery Timeline



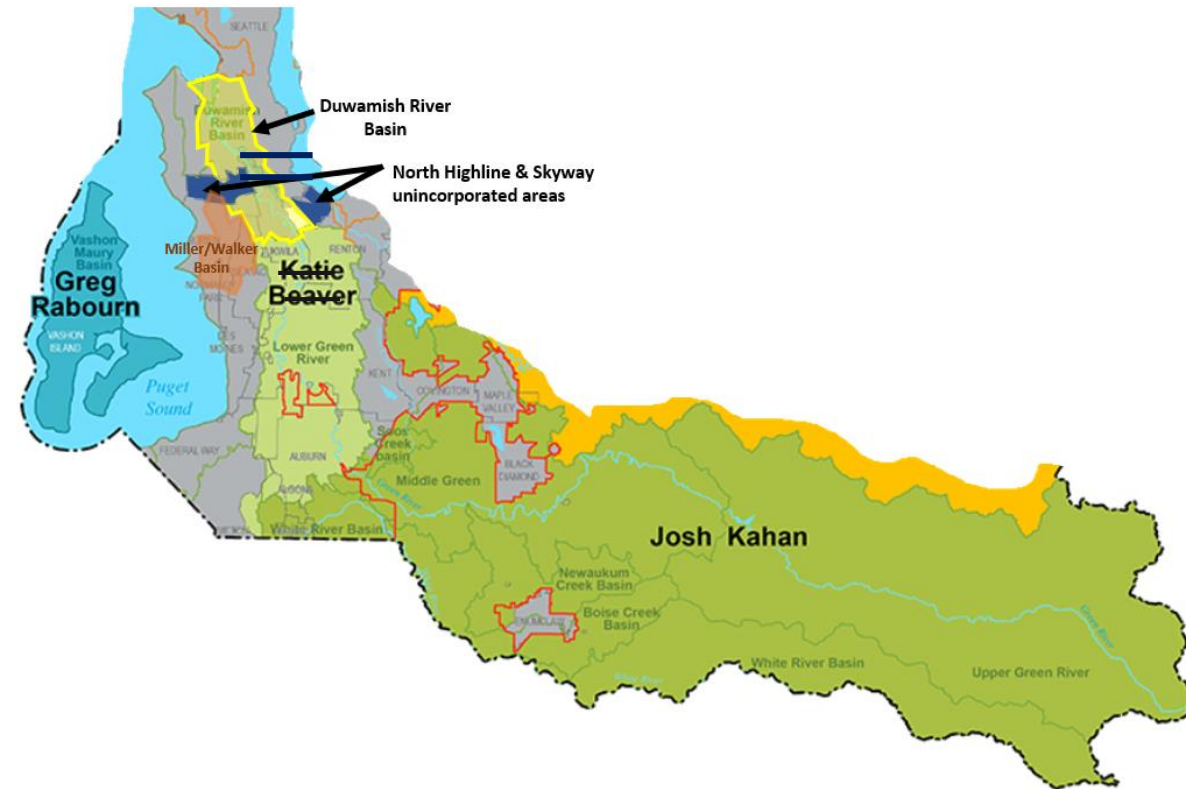
WRIA 9 - A Watershed Approach



- 575 square miles
- 17 local governments
- 5 sub-watersheds
- Watershed Ecosystem Forum
 - CM Herbold Forum co-chair
- Seattle dues
 - \$147,674K for 2022
 - 100% Drainage Fund

New Duwamish Basin Steward

- A coordinated salmon recovery and habitat protection approach for the Duwamish
- A point person
 - Unique and complex basin
 - Multiple efforts – Seattle, King County, Port of Seattle, City of Tukwila, community organizations, private sector
 - Equity and social justice
 - Broad community support
 - Collaboration, coordination and leverage to maximize benefits
 - Helps support Green Stormwater Infrastructure and climate resilience efforts



The Details

Interlocal Agreement

- 4 Parties
- Cost-share
- Duwamish Basin Management Team to develop work plan and budget
- Through 2026, can extend
- Encourages future cost-sharing partners

Day-to-Day

- Part of the King County Basin Steward program

2022 Adjusted Cost-Share

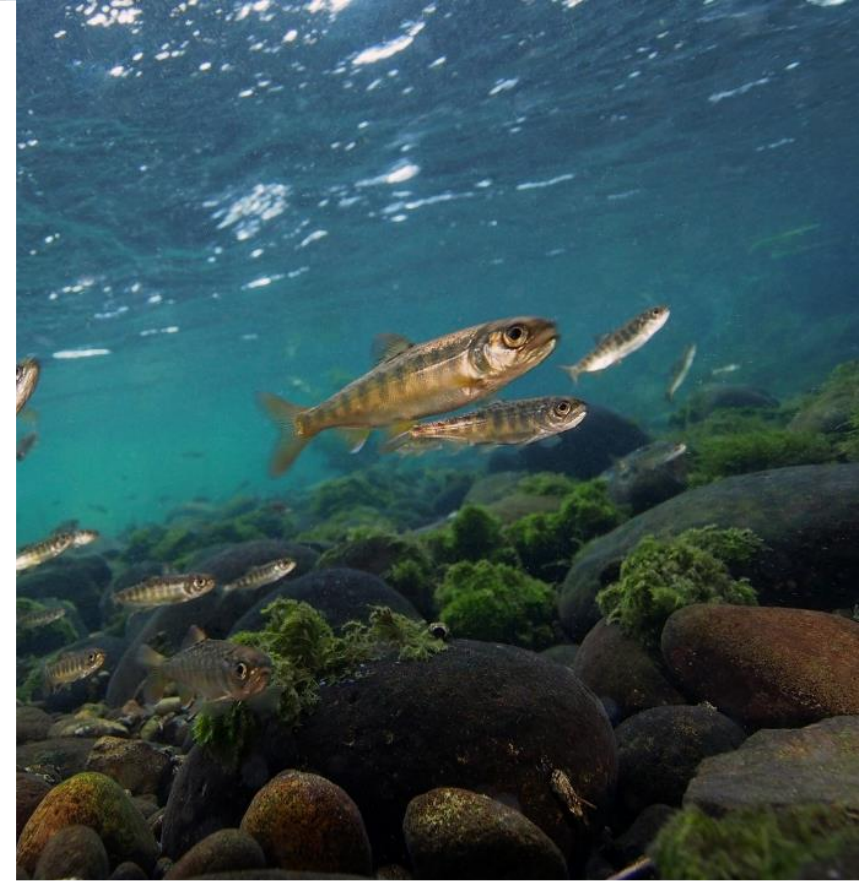
ILA Party plus WRIA 9	Cost share	%	Base %
King County	\$66,500	32%	38%
Seattle	\$66,500	32%	38%
Port of Seattle	\$26,000	12%	12%
City of Tukwila	\$26,000	12%	12%
WRIA 9	\$26,000	12%	
TOTAL	\$210,000	100%	

For 2023, WRIA 9 is funding 0.25 of the Duwamish Steward FTE for about \$50,000



Duwamish & Nearshore Sub-watersheds Priorities

- Protect, restore & enhance marine shorelines
- Restore and enhance estuarine habitat
- Improve sediment and water quality
- Revegetate riparian corridors



Thank You and Questions