

DNR Aquatic Lands Easement

Seattle City Council
Transportation & Seattle Public Utilities
Committee

6/7/2022

Seattle Public Utilities



City of Seattle

Purpose of Legislation

- This legislation will accept an easement for a sanitary sewer line within the Shilshole Bay Waterway. The pipe was installed in 2019 and the easement was executed in 2020.

Pump Station 43 Emergency Force Main Replacement Project

- In late 2017 SPU discovered a damaged sewer line through Shilshole Bay Waterway in Ballard
- SPU immediately stopped using the existing sewer line to prevent sewage from entering the waterway
- SPU attempted an emergency repair with underwater divers but was unsuccessful
- SPU explored options and alignments for replacing the sewer line and initiated the Emergency Replacement Project



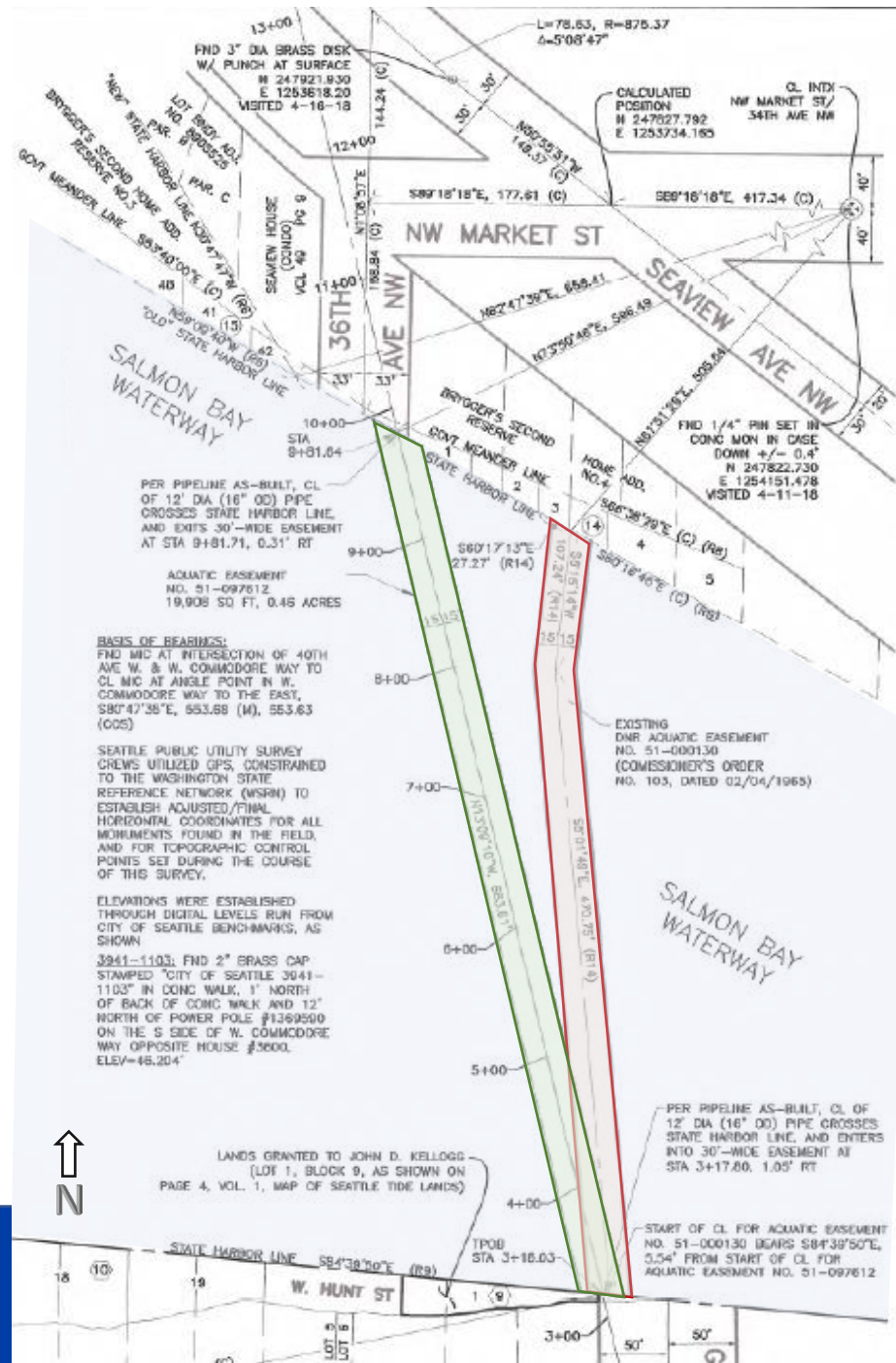
Pump Station 43 Emergency Force Main Replacement Project

- Old pipe installed via barge and alignment is through two USACE piers
- Open trenching along existing alignment across waterway not feasible
- Preferred alignment from City ROW to City ROW avoided additional easements from private residents
- New pipe installation via Horizontal Directional Drilling
- SPU to acquire a new easement from DNR.



Easements

- Installation of pipe was completed in March 2019
- Easement from DNR recorded in February 2020
- Why keep old easement? Because pipe was abandoned in place.
- Fee for easement limited to administrative fees of \$1,510



Existing easement for abandoned pipe (DNR 51-00103)

New easement for new Force Main (DNR 51-097612)

Questions?

