

Glacier and Boulevard Park Wellfield Parcels

Seattle City Council
Transportation & Seattle Public Utilities
Committee

7 June 2022

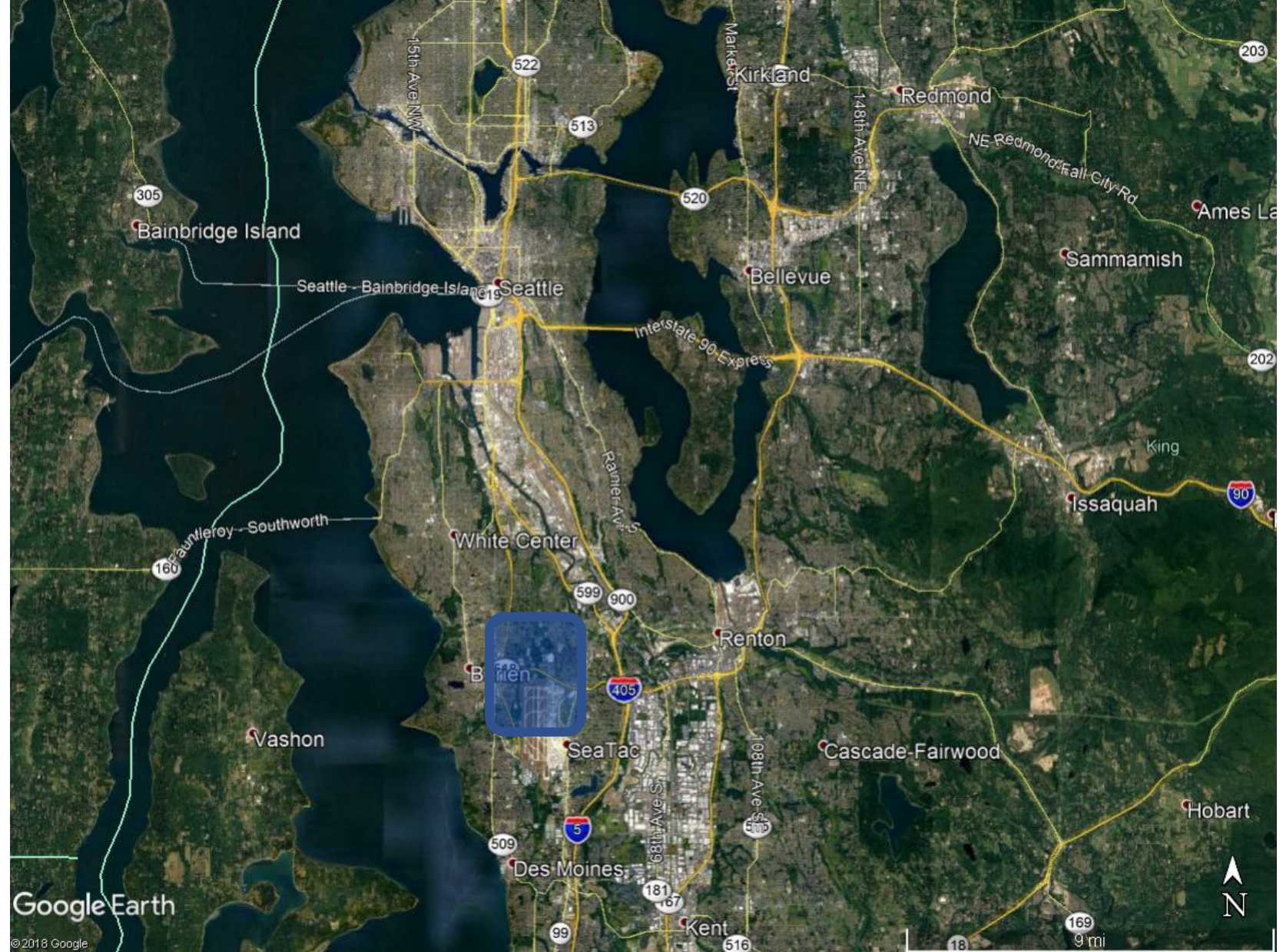


Purpose of Legislation

- This legislation will accept two deeds for real property acquisitions where SPU has installed, tested, and operated ground water wells in connection with the Highline Well Field project.

Project Location

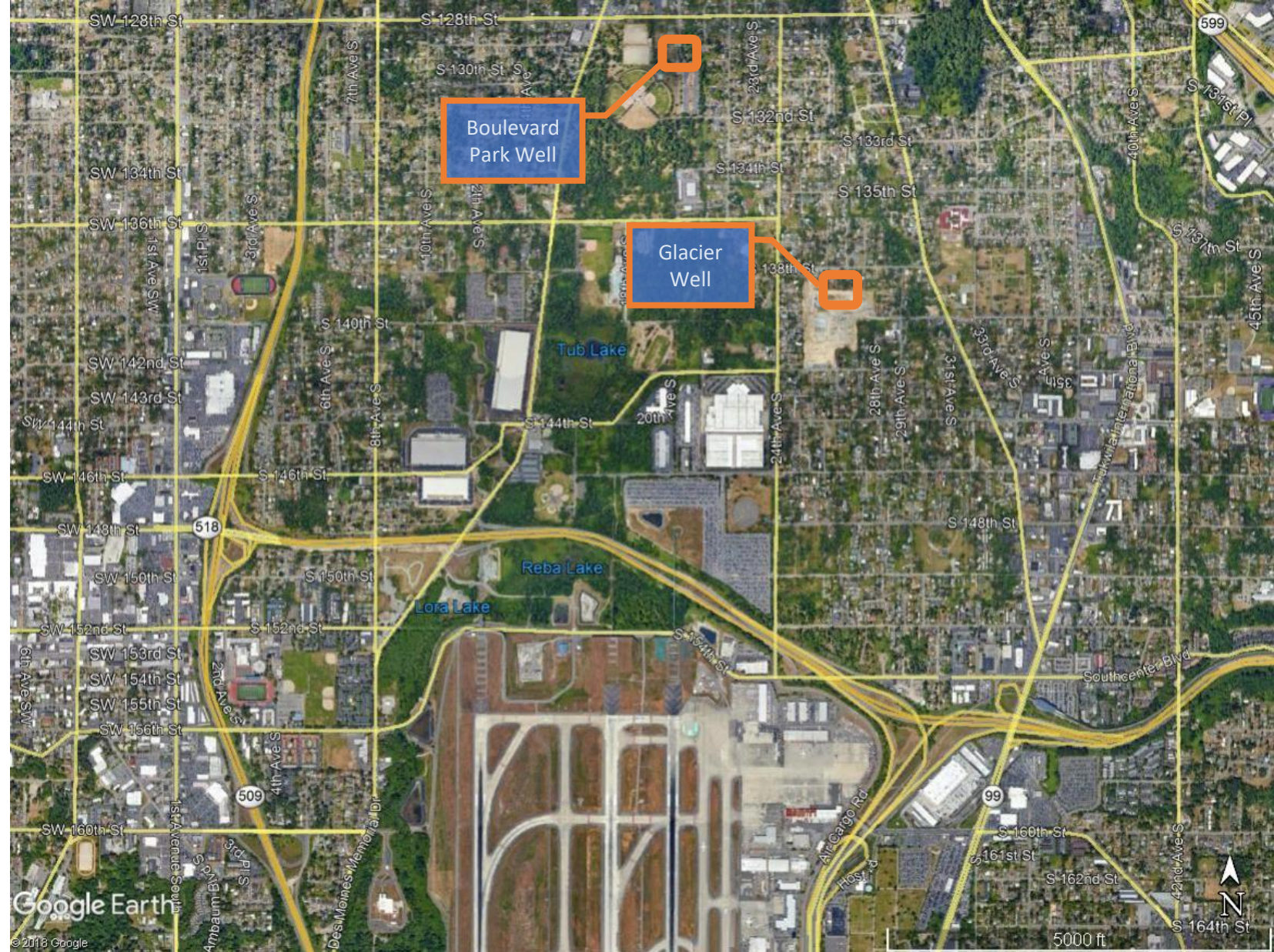
City of SeaTac



Wells

Boulevard Park Well
Glacier Well

- SPU uses Blvd Park Well for drinking water supply
- Glacier Well is maintained and monitored for potential future use
- Both wells are for emergencies and limited term uses



Property Acquisitions

- The City purchased properties from the Highline School District in 1986
- Boulevard Park Well: Purchase Price \$80,350
- Glacier Well: Purchase Price \$59,600



Benefits

- Clarifies ownership for Highline School District
- Updates SPU Real Property Records
- Meets City of Seattle Municipal Code requirements
- Prepares for potential future uses

Questions?

