

Document Path: O:\POOL\PRIVATE\EAD\GIS21\Projects\GIS210\JAN2016_04 Property Ordinances\1_MXD\2016_0406_Rights to be Acq Mapbook.mxd




Seattle City Light

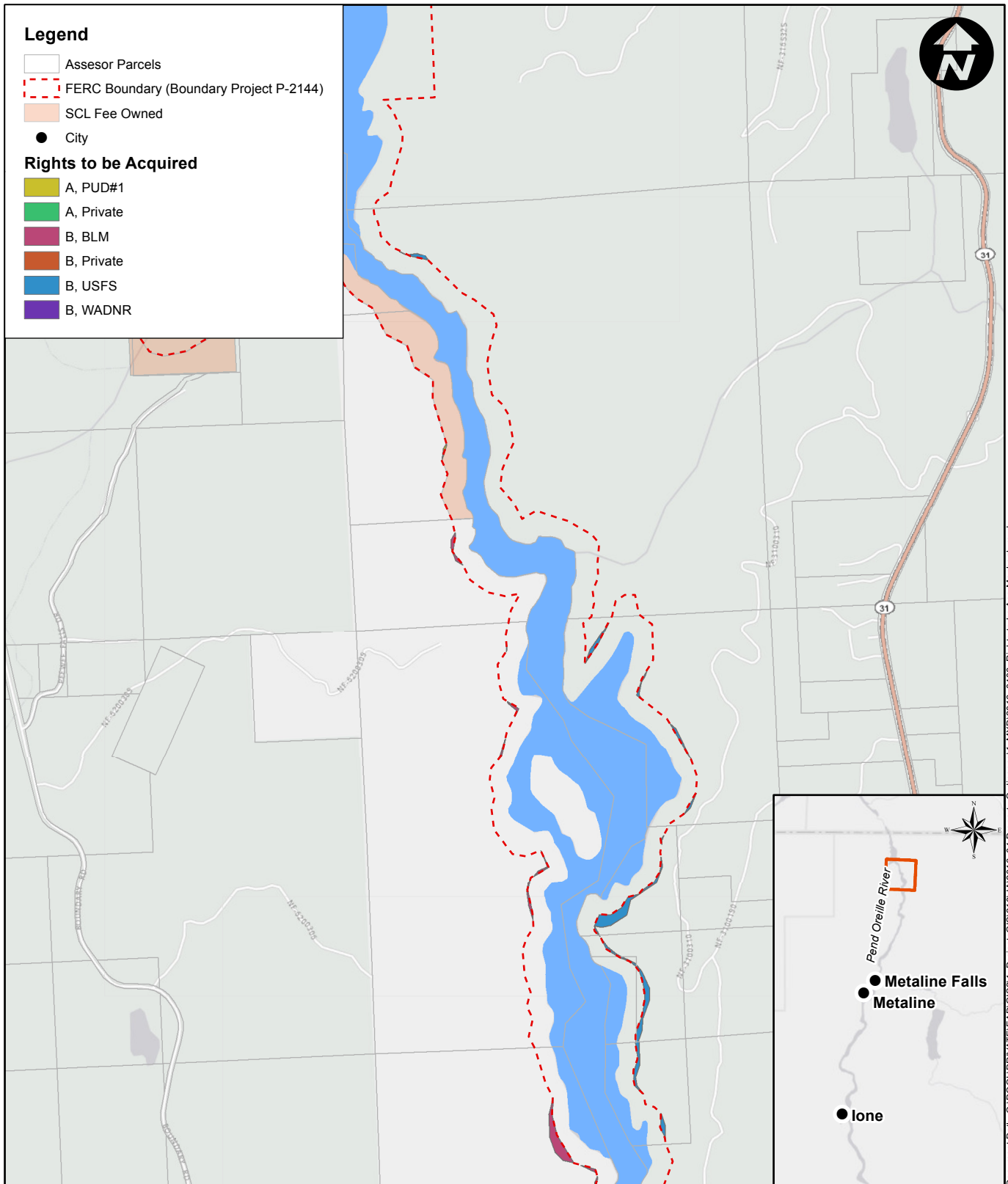
Created 4/8/2016 by Seattle City Light,
Environmental Affairs & Real Estate Division.
SCL provides no warranty, expressed or implied, as to
the accuracy, reliability or completeness of this data.

Rights To Be Acquired in Fee

Service Layer Credits: Esri, HERE, DeLorme,
MapmyIndia, © OpenStreetMap contributors, and
the GIS user community

0 0.125 0.25 0.5
Miles





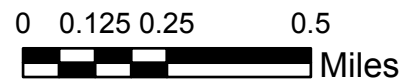
Document Path: O:\POOL\PRIVATE\HEAD\GIS21\Projects\GIS210\JAN2016_04 Property Ordinance\1_MXD\2016_0406_Rights to be Acq Mapbook.mxd

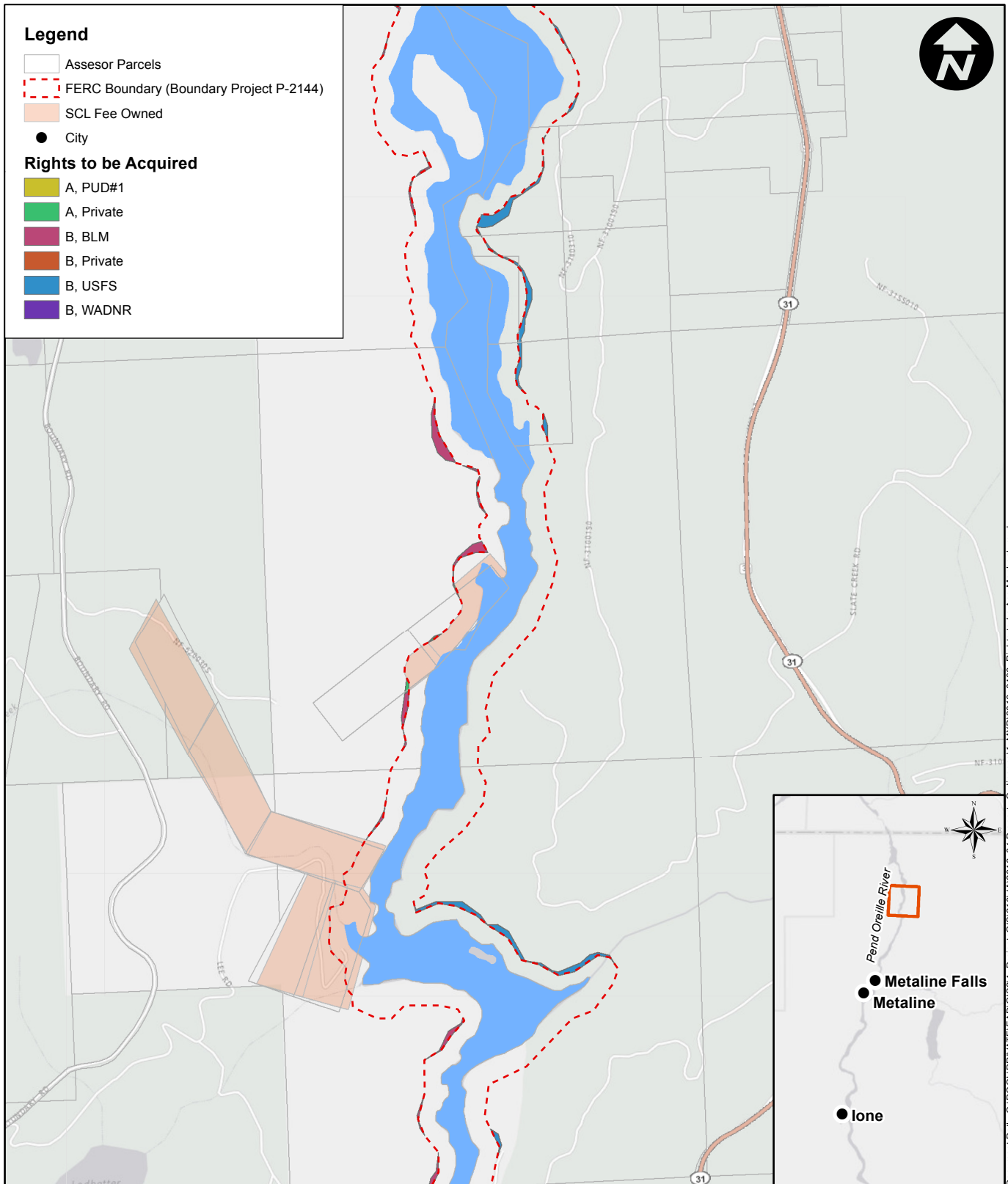


Created 4/8/2016 by Seattle City Light,
Environmental Affairs & Real Estate Division.
SCL provides no warranty, expressed or implied, as to
the accuracy, reliability or completeness of this data.

Rights To Be Acquired in Fee

Service Layer Credits: Esri, HERE, DeLorme,
MapmyIndia, © OpenStreetMap contributors, and
the GIS user community

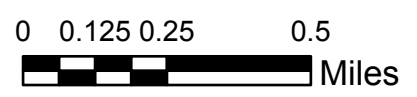


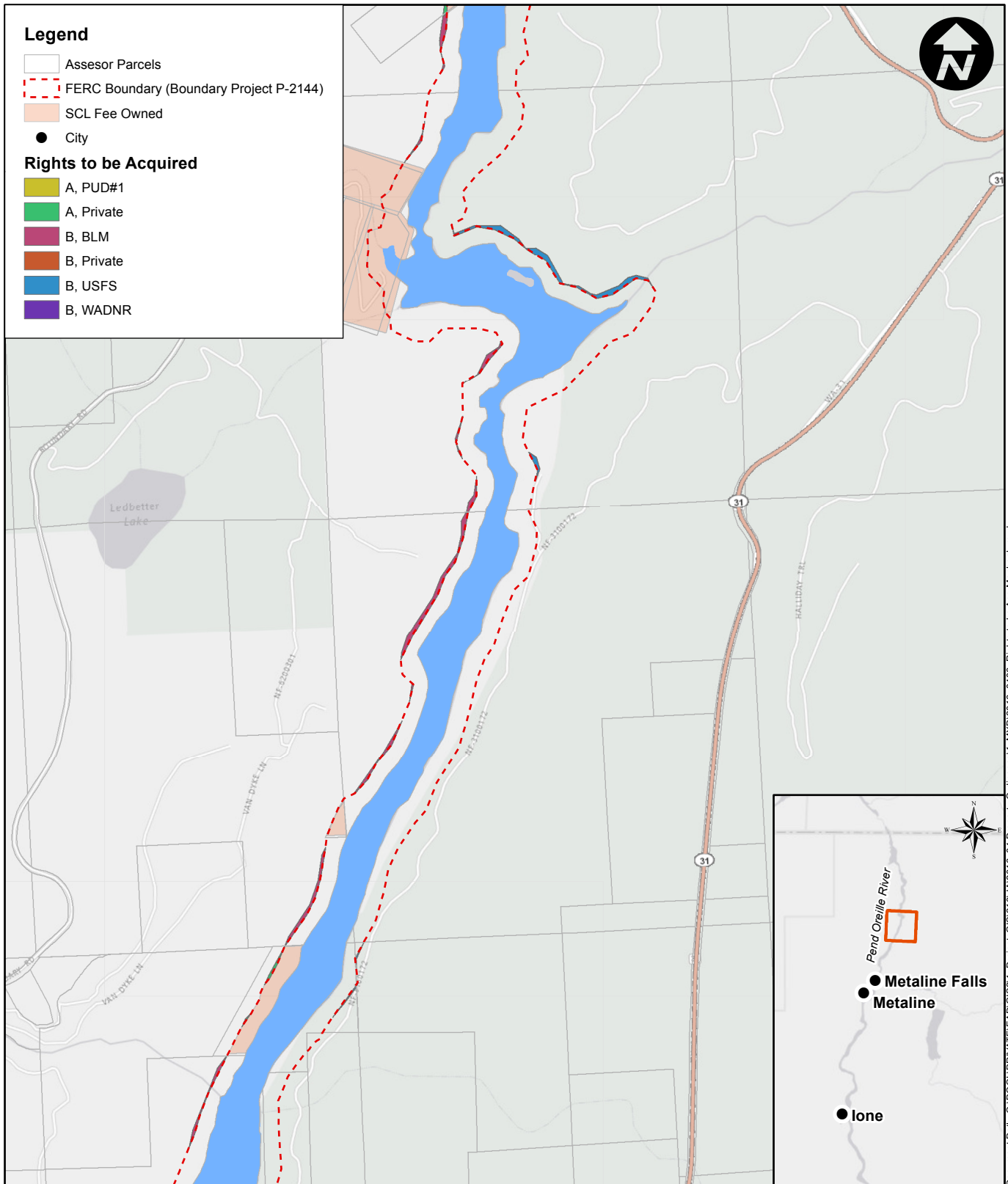


Created 4/8/2016 by Seattle City Light,
Environmental Affairs & Real Estate Division.
SCL provides no warranty, expressed or implied, as to
the accuracy, reliability or completeness of this data.

Rights To Be Acquired in Fee

Service Layer Credits: Esri, HERE, DeLorme,
MapmyIndia, © OpenStreetMap contributors, and
the GIS user community





Document Path: O:\POOL\PRIVATE\EAD\GIS2\T_Projects\GIS2\T0\JAN2016_04_Property_Ordinance\T_MXD\2016_0406_Rights to be Acq Mapbook.mxd




Seattle City Light

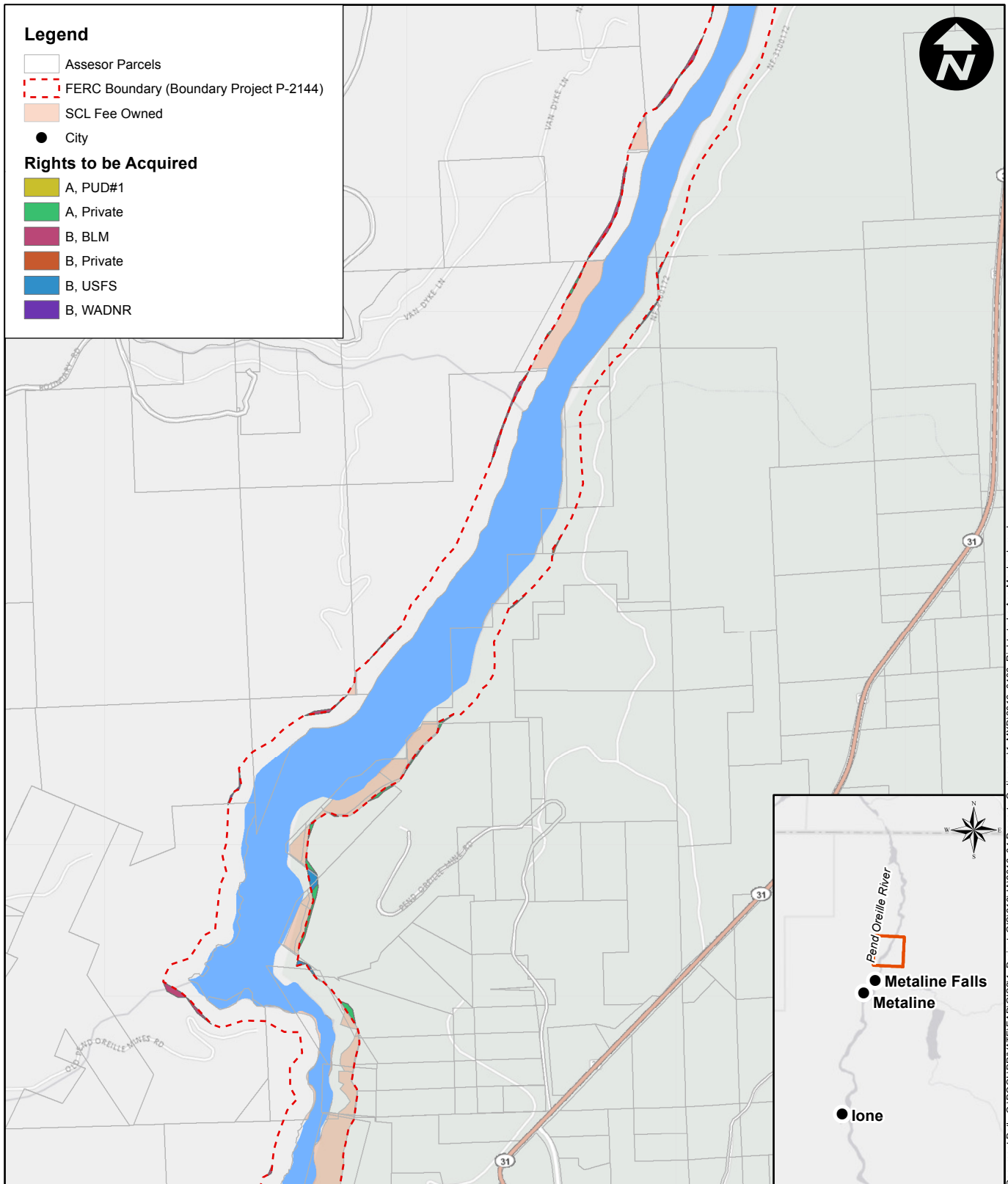
Created 4/8/2016 by Seattle City Light,
Environmental Affairs & Real Estate Division.
SCL provides no warranty, expressed or implied, as to
the accuracy, reliability or completeness of this data.

Rights To Be Acquired in Fee

Service Layer Credits: Esri, HERE, DeLorme,
MapmyIndia, © OpenStreetMap contributors, and
the GIS user community

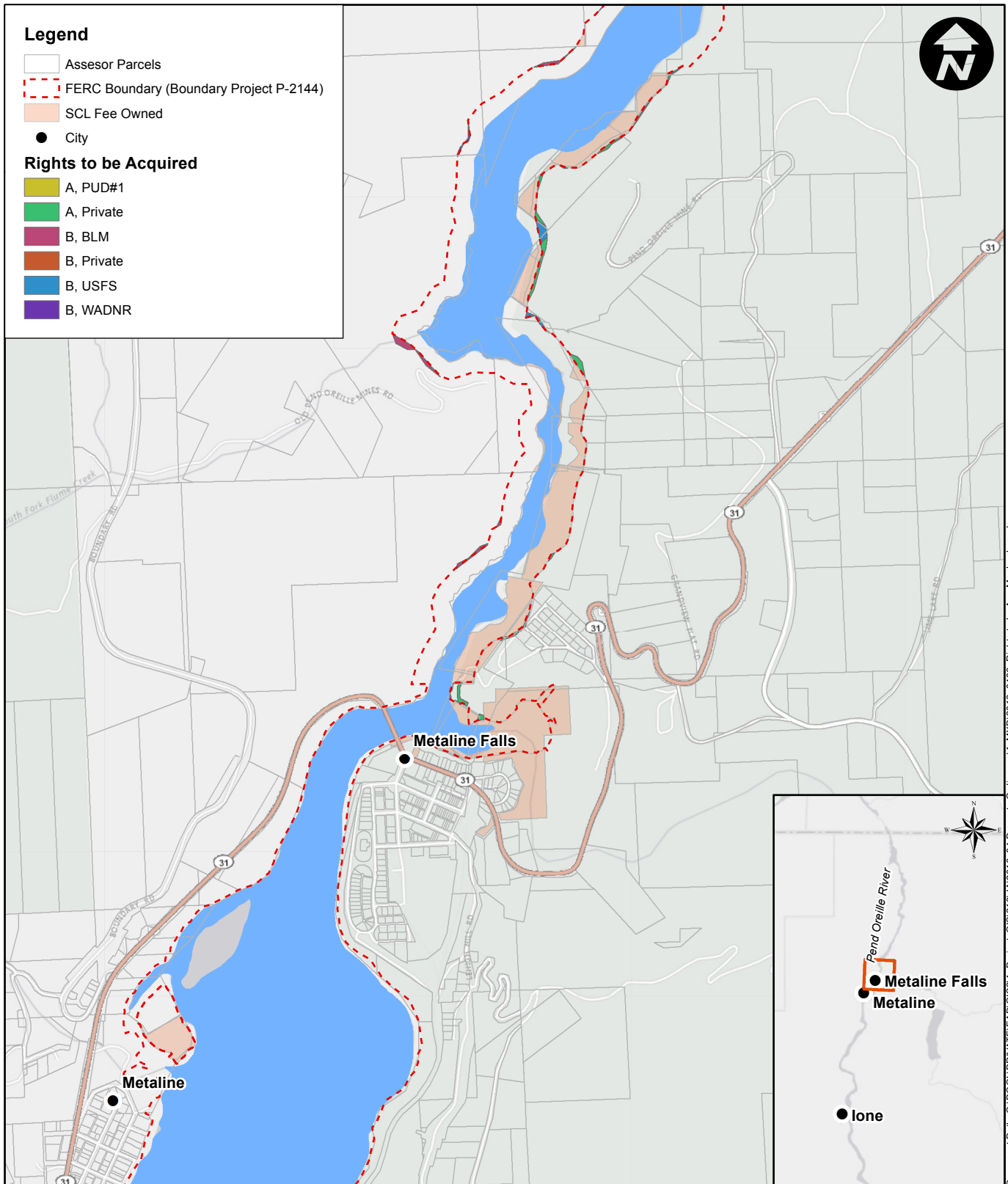
0 0.125 0.25 0.5
Miles





Document Path: O:\POOL\PRIVATE\EAD\GIS21\Projects\GIS210\JAN2016_04 Property Ordinance\1_MXD\2016_0406_Rights to be Acq Mapbook.mxd

	<h2>Rights To Be Acquired in Fee</h2>	<p>Service Layer Credits: Esri, HERE, DeLorme, MapmyIndia, © OpenStreetMap contributors, and the GIS user community</p>
<p>Created 4/8/2016 by Seattle City Light, Environmental Affairs & Real Estate Division. SCL provides no warranty, expressed or implied, as to the accuracy, reliability or completeness of this data.</p>		<p>0 0.125 0.25 0.5 Miles</p>



Document Path: O:\POOL\PRIVATE\EAD\GIS2\T_Projects\GIS2\T0\JAN2016_04_Property_Ordinance\T_MXD\2016_0406_Rights to be Acq Mapbook.mxd



Created 4/8/2016 by Seattle City Light,
Environmental Affairs & Real Estate Division.
SCL provides no warranty, expressed or implied, as to
the accuracy, reliability or completeness of this data.

Rights To Be Acquired in Fee

Service Layer Credits: Esri, HERE, DeLorme,
MapmyIndia, © OpenStreetMap contributors, and
the GIS user community

