

Climate Justice Priorities

QA

Matt Remle and Rachel Heaton, Mazaska Talks
Debolina Banerjee, Puget Sound Sage
Deepa Sivarajan, Climate Solutions
Jess Wallach, 350 Seattle

Energy Justice

Climate concerns

- Poor air quality
- Reduced access to healthy and affordable food
- Lack of affordable housing
- Climate disasters have disproportionate impacts

Recommendations

- Expand public transit, reduce fares, and electrify buses
- Meet the need for low-income bill assistance and efficiency updates
- The transition to renewable energy must provide local benefits
- A promise of good jobs must be backed by real access and collective bargaining



Powering the Transition

COMMUNITY PRIORITIES FOR A RENEWABLE AND EQUITABLE FUTURE



Energy Justice

Cutting basic needs

FIGURE 28. IF YOUR TOTAL ENERGY COSTS WENT UP BY \$50 A MONTH, WHICH OF THE FOLLOWING ARE YOU MOST LIKELY TO DO? (PERCENT OF RESPONDENTS, CHOOSING UP TO TWO ANSWERS)



Low-Income Bill Assistance

FIGURE 30. DO YOU RECEIVE LOW-INCOME ENERGY ASSISTANCE OFFERED BY THE CITY, COUNTY OR YOUR UTILITY?

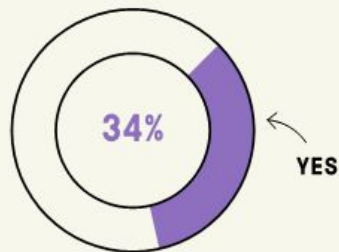
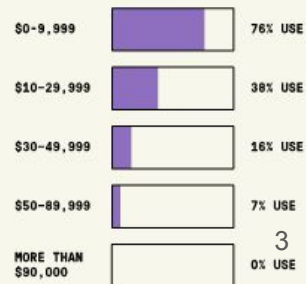
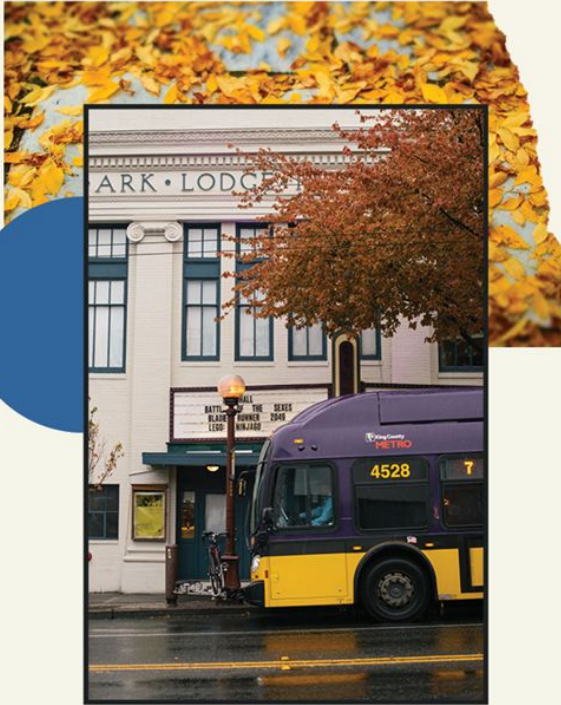


FIGURE 31. RATE OF LOW-INCOME BILL ASSISTANCE USE BY INCOME



Energy - Transportation - Housing



- Expand Public Transit
- Reduce Fares
- Electrify Buses
- Shift electrification priorities from Single Occupancy Vehicle to Public Transit
- Shift from Driving to Mode Choice
- Pair transportation policies with Anti displacement policies

Intersectional Analysis and Organizing



PSE purchases fracked gas from producers in BC, Alberta and Rocky Mountain states.

- Canada's Inquiry on Missing and Murdered Indigenous Women (MMIW) found that fracked gas extraction sites are ground zero for MMIW
- Methane is more potent greenhouse gas and contributes to our emissions

Green Infrastructure Investments

Creative solutions: water turbines

<https://youtu.be/SFLCJvDj9xM>

Green infrastructure

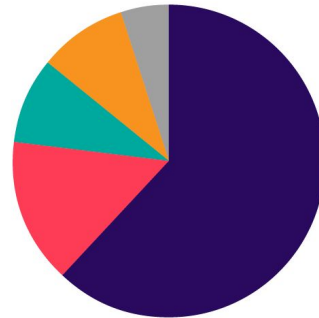


Funding Priorities: JumpStart / Amazon Tax

**JumpStart
Seattle**

**Long-Term
Spending
Plan**

\$214+ MILLION
total each year



5% for administrative costs

funding for

62% Housing

Affordable housing, homeownership programs, & a community investment fund

15% Small Business

Small business assistance to ensure economic recovery and resiliency

9% Green New Deal

Fund the GND Advisory Committee and invest in communities most impacted by climate change

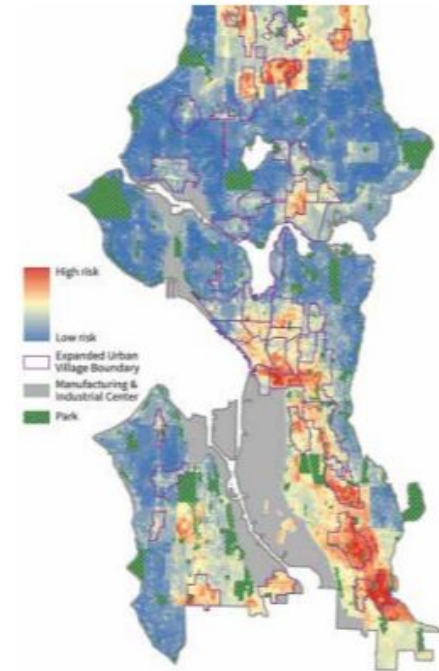
9% Equitable Development Initiative

Community-initiated projects that fight displacement & build community wealth

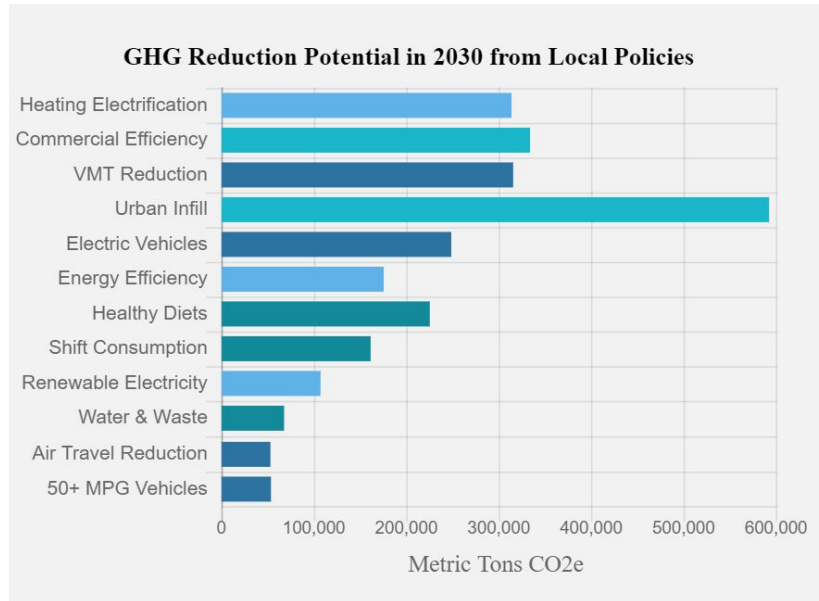
Affordable Housing

Seattle's housing crisis is pushing folks out of the city, and all this extra driving is literally **driving up our climate pollution.**

Map 1. Displacement Risk Index
Source: Seattle Comprehensive Plan



Affordable Housing



Analysis: San Francisco climate strategies. Source: Cool Climate Network

When we can all live in the places where we work, go to school, shop and connect with our communities, our climate pollution slows and our climate resilience grows.

Portland's Residential Infill Project

Re-legalizing "middle housing" citywide

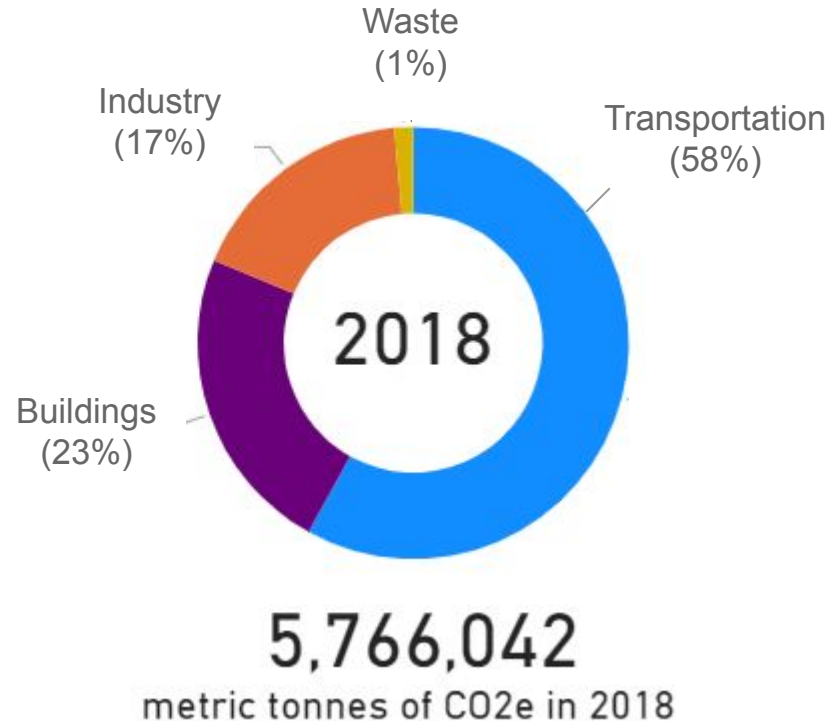


Sightline
INSTITUTE

Building Electrification

To mitigate our greenhouse house emissions, we need to **stop using fossil fuels** to heat and power our buildings.

- Buildings are the second-highest and fastest-growing source of emissions in Seattle
- As our electricity gets cleaner, we need to stop using fossil fuels like gas and oil for space and water heating



Buildings and Air Pollution

Combusting gas releases dangerous pollutants inside and outside our buildings and homes, including carbon monoxide, particulate matter, nitrogen oxide, lead, and formaldehyde.

- Children have a 42% increased risk of experiencing asthma symptoms with the use of gas stoves indoors
- WA's residential appliances release more than 2x as much NO_x outside as all WA gas power plants combined
- Small increases in exposure to these pollutants have been correlated with a higher death rate from COVID-19



Safety

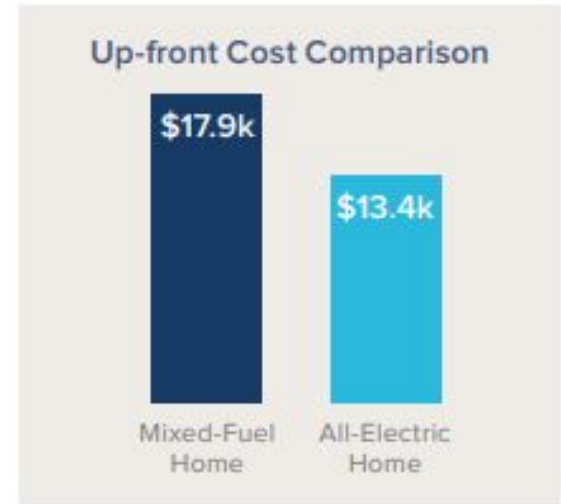
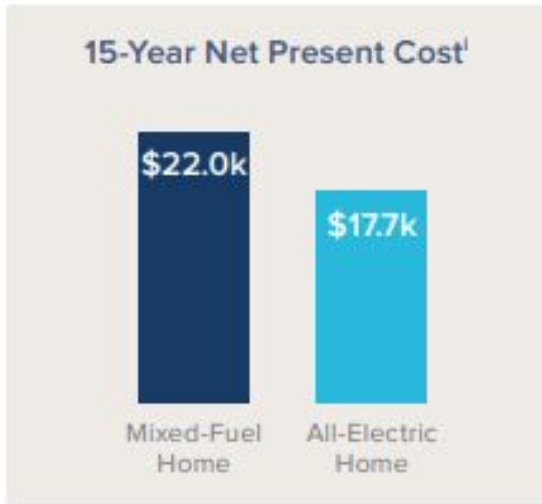
Pipeline **leaks and explosions** pose a risk to our communities.

- In Seattle, a resident calls 911 an average of once every three days about a suspected gas leak, odor, or fire
- Earthquake risk makes Washington particularly vulnerable because highly pressurized gas pipelines run a high risk of exploding during earthquakes



Cost-Savings with Electrification

All-electric buildings can save money for both builders and residents. In Seattle, RMI found that an all-electric home saves \$4,300 in lifecycle costs and 28 tons of CO2 emissions over a 15-year period.



Current Electrification Efforts

Local policies

- Requirements for 100% clean new buildings
- Public utility electrification programs
- Funding for existing building retrofits

State level policies

- State energy code changes
- Removing state gas preferences
- Gas utility transition plans

Regulatory policies

- Requires investigation of pathways for gas utilities to meet state GHG targets
- Must consider impacts to highly impacted communities
- Line extension policies

