



driveclean

s e a t t l e



Briefing Overview

1. Drive Clean Seattle Resolution
2. Overview of Drive Clean Seattle Report
3. Implementation Strategy
4. Actions to-date
5. Report Conclusions and Next Steps



Drive Clean Seattle Resolution

- Identifies transportation electrification as key climate strategy
- Sets a goal for the City to have 30% EV by 2030
- Adopts Drive Clean Seattle as City's comprehensive plan to accelerate EV deployment and requests report on implementation strategies

STRATEGY

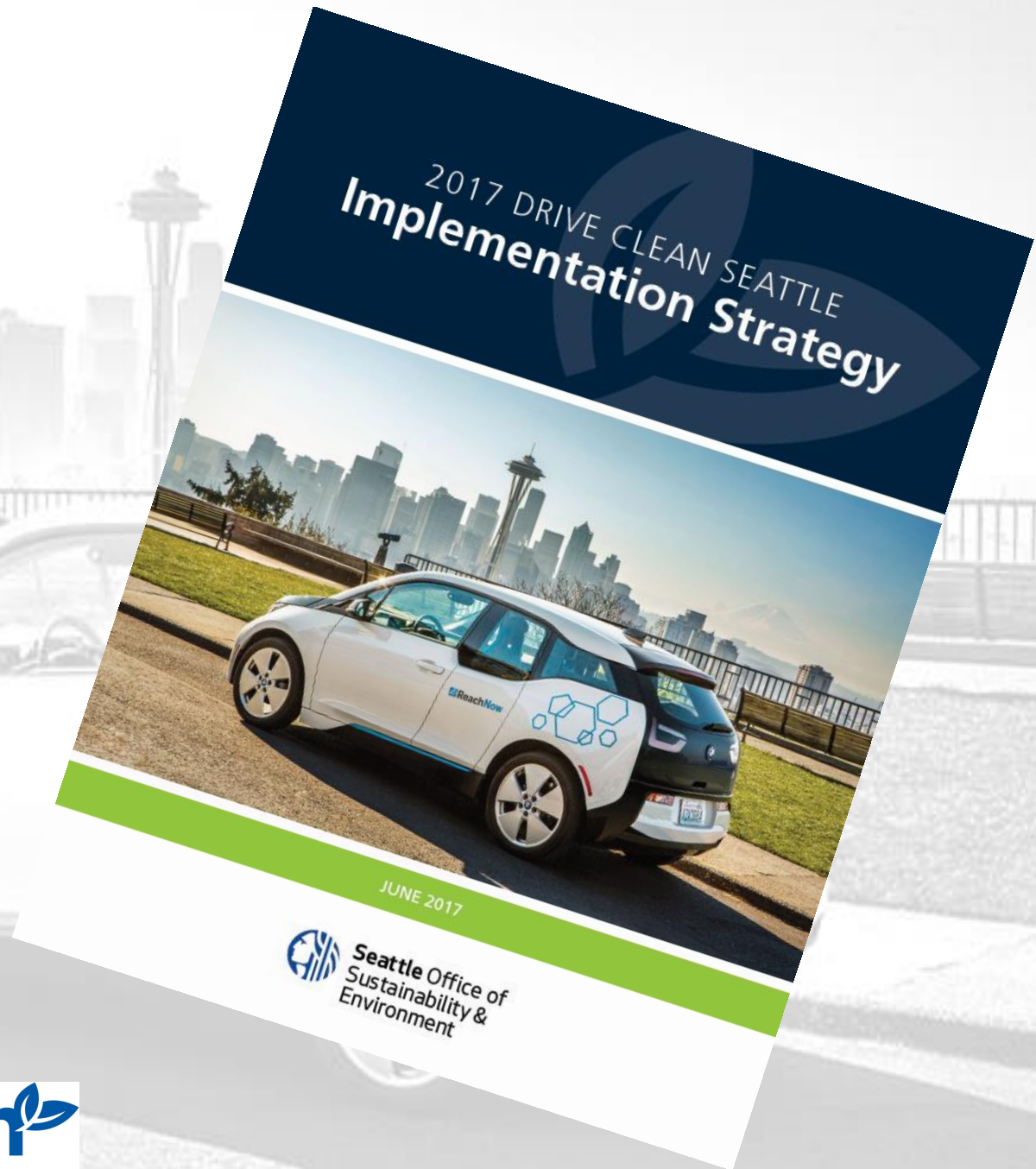
Smart Cities: Leverage technology to advance the goals of a shared, clean and equitable transportation system.

Race and Social Justice: Maximize the benefits of a clean transportation system for those most impacted by the air pollution of the current system.

EVs and EV Charging: Increase the adoption of electric vehicles by facilitating access to charging.

City Leadership: Electrify the city's fleet to demonstrate best practices.

Outreach and Awareness: Increase consumer exposure to electric vehicles and awareness about the benefits of electrification.



driveclean
seattle

Tremendous EV growth in Seattle

- 5th largest market share of major U.S. cities
- Largest non-California market
- 5550 EVs in Seattle through June, 2017*

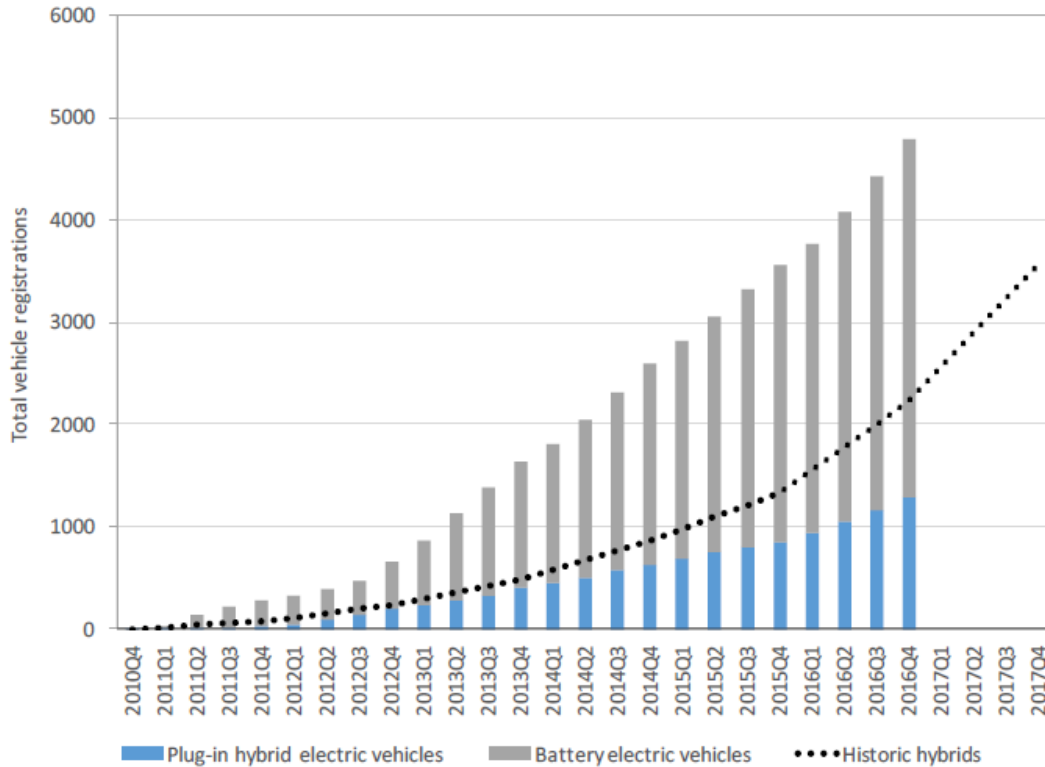
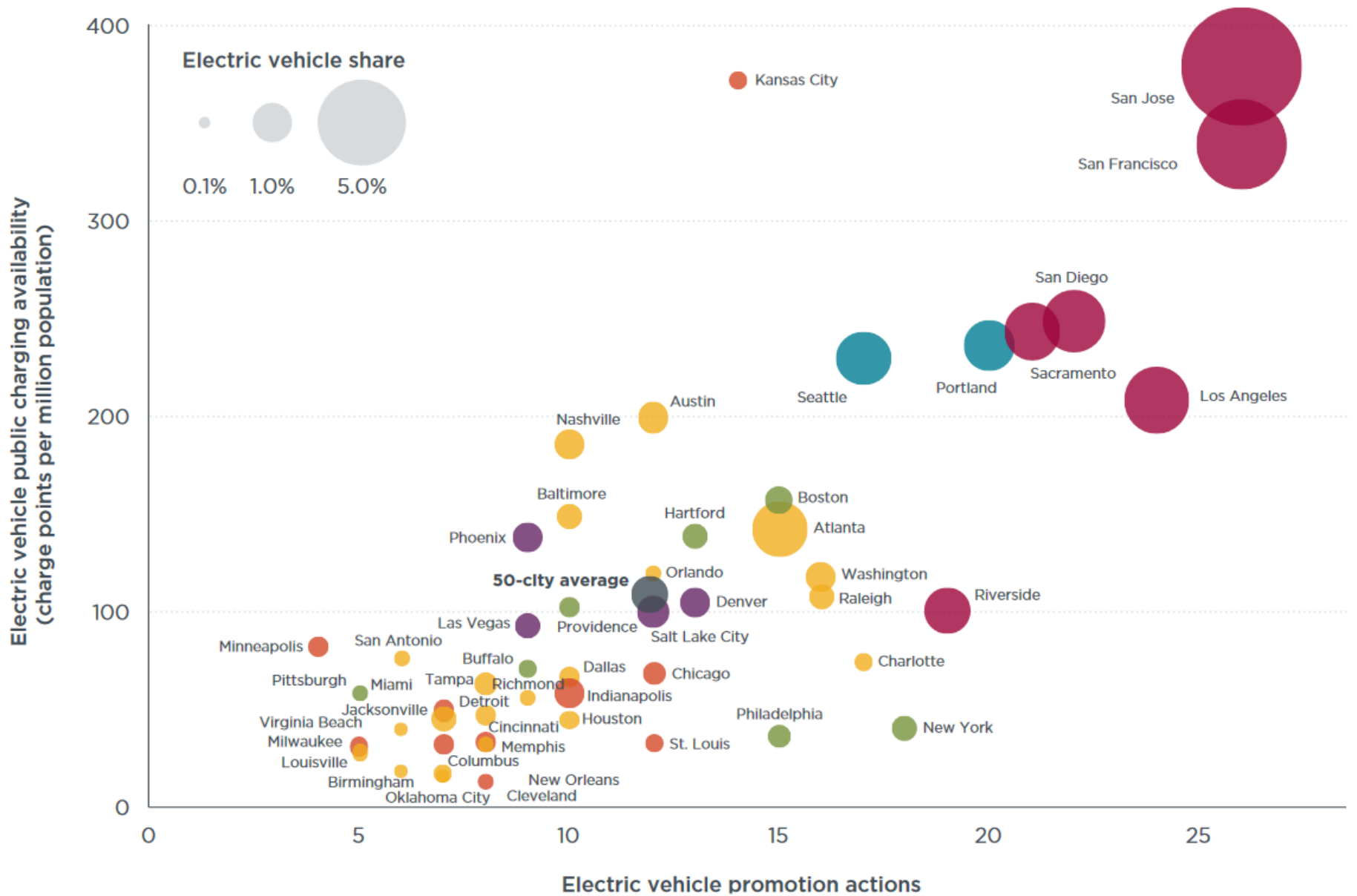
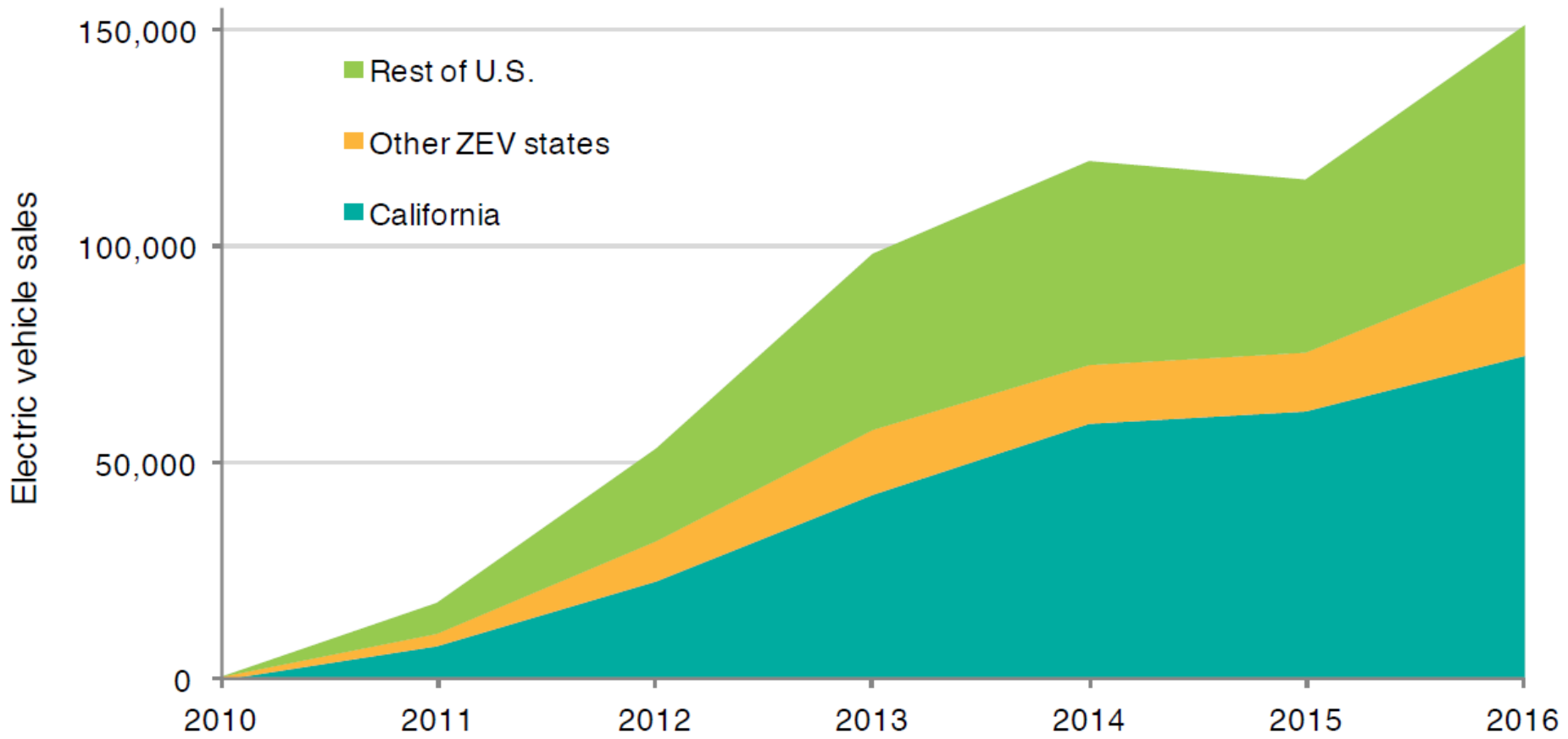


Chart courtesy of the Electric Power Research Institute.





<http://www.theicct.org/ev-markets-calif-cities-sept2016>



driveclean

s e a t t l e

Drive Clean Seattle is a broad initiative to accelerate the transformation of the region's transportation sector away from oil and to City Light's carbon-neutral electricity.

Racial Equity Outcomes

1. Improve air quality in the places where EEl communities live, learn, work and play.
2. Bring economic benefit to EEl communities through an increase in green transportation jobs and a decrease in transportation costs.
3. EEl communities have equitable access, accountability, and decision-making power in Drive Clean Seattle.
4. Highlight the clean transportation stories and experiences of EEl communities.



driveclean

s e a t t l e

Key Actions Moving Forward

- Utilize creative, culturally relevant strategies and foster community cohesion by connecting EV and transportation programs to cultural anchors. *Ex. City Light DC fast charging stations*
- Understand more about how code and policy changes which could increase EV infrastructure may unduly burden EEI populations and have unintended consequences around displacement and gentrification.
- Partner directly with community-based organizations, work in close collaboration with the EEI, and build partnerships with service industry anchors to develop a suite of policy and program actions which will work in tandem to address racial equity in transportation electrification
- Racial equity analysis for each major project within Drive Clean Seattle with nested outcomes of the broader DCS toolkit.

Strategies to Accelerate Deployment

- Cost
 - Purchase Incentives
 - Operating Incentives
- Convenience
 - Public Charging
 - Home Charging
 - Workplace Charging
- Consumer Awareness
 - Fleets
 - Public Outreach and Engagement



2017-2018 Drive Clean Implementation Strategy

STRATEGY	IMPLEMENTATION ACTION	LEAD DEPARTMENT
Smart Cities: Leverage technology to advance the goals of a shared, clean and equitable transportation system.	Advance electric shared mobility at Shared Mobility Hubs by developing infrastructure implementation roadmap for Shared Mobility Hubs.	SDOT
	Develop a policy framework for autonomous vehicles to encourage investment in electric vehicle technologies and shared mobility.	SDOT
Race and Social Justice: Maximize the benefits of a clean transportation system for those most impacted by the air pollution of the current system.	Partner with the Environmental Justice Committee to implement projects in EEI communities which deliver racial equity outcomes identified in the Drive Clean Seattle Racial Equity Toolkit.	OSE
	Complete additional racial equity toolkits for major Drive Clean Seattle projects and policies.	Various
EVs and EV Charging: Increase the adoption of electric vehicles by facilitating access to charging.	Advocate for Volkswagen settlement funding from both the State Mitigation Fund and the ZEV Investment Fund to accelerate EV adoption in Seattle and benefiting Seattle residents.	OSE
	Develop a network of off-street charging station clusters by developing an off-street EVSE cluster plan.	SDOT
	Explore pathways to allow electric vehicle charging in the right-of-way.	SDOT
	Install 20 DC fast chargers as part of City Light DCFC pilot project in 2017 and 2018	City Light
	Launch City Light residential charging pilot project to install at least 200 EV chargers in customer's homes.	City Light
	Develop EV ready code packages to ensure buildings and parking infrastructure can accommodate electric vehicles.	OSE
City Leadership: Electrify the city's fleet to demonstrate best practices.	Launch a workplace charging program for City of Seattle employees.	OSE
	Install 200 new charging stations for fleet vehicles in 2017/18 and achieve 40% electrification of current light duty municipal fleet.	FAS
	Partner with the Electric Power Research Institute (EPRI) to test a range of charging technologies on the City's fleet vehicles at the SeaPark Garage. The project will help City Light (and the City's Fleet Management Division) understand ways to leverage managed charging technology to mitigate the need for utility and customer infrastructure upgrades.	City Light/FAS
	Foster public-private partnerships with electric vehicle industry partners to facilitate investment in charging infrastructure and electric shared transportation.	OSE/FAS
Outreach and Awareness: Increase consumer exposure to electric vehicles and awareness about the benefits of electrification.	Develop website to provide residents and businesses information about electric vehicles and electric vehicle charging and to promote electric transportation.	OSE
	Participate in National Drive Electric Week and other EV Showcase and Ride & Drive events and activities.	OSE



2017 Progress Report



- ✓ Awarded DOE EV Shared grant
- ✓ Growing partnership with the EJC
- ✓ Electrify America investment - \$11M – second largest region
- ✓ Launched EVCROW Pilot Program
- ✓ City Light charging pilot projects
- ✓ Drive Clean Seattle Executive Order
- ✓ SMT EVSE install in progress
- ✓ EPRI project in scoping phase
- ✓ National Drive Electric Week event at Denny Park

What's next?

- Preparing for upcoming statewide funding opportunities – VW state mitigation fund and Clean Energy Fund
- Seeking funding to support low and middle income EV deployment and creative EV car share projects
- Pursuing state/local partnerships to align AV deployment principles to favor low and zero emission vehicles
- EV Readiness Codes
- Workplace Charging
- Big upcoming fleet purchase



driveclean

s e a t t l e

