

Jackson Park – NE 130th Street Transfer of Jurisdiction

Seattle Parks and Recreation (SPR)
Seattle Department of Transportation (SDOT)

City Council Public Assets and Homelessness Committee

Jackson Park – NE 130th Street

Transfer of Jurisdiction: Overview

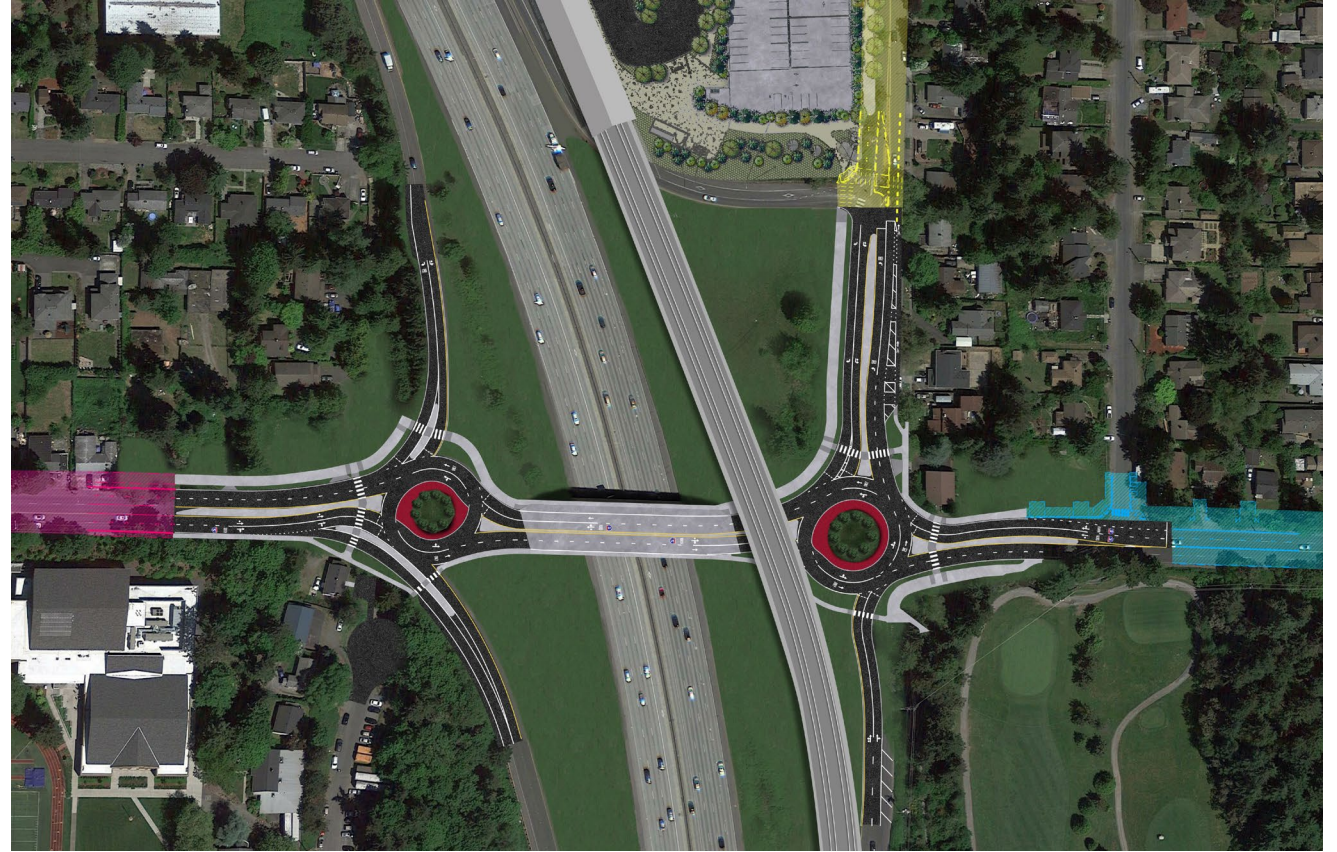
- Legislation authorizes property exchange between SPR and SDOT within Jackson Park.
- The City of Shoreline will be constructing street improvements along NE 145th Street including a widened sidewalk on current SPR property.
- In exchange, SPR would receive larger property on NE 130th St near the south end of Jackson Park (adjacent to the Licorice Fern Natural Area).
- Exchange complies with Initiative 42, which helps preserve City parkland.

Shoreline I-5 Interchange Project & Need For Transfer of Jurisdiction

City of Shoreline I-5 Interchange project at NE 145th St (roundabouts)

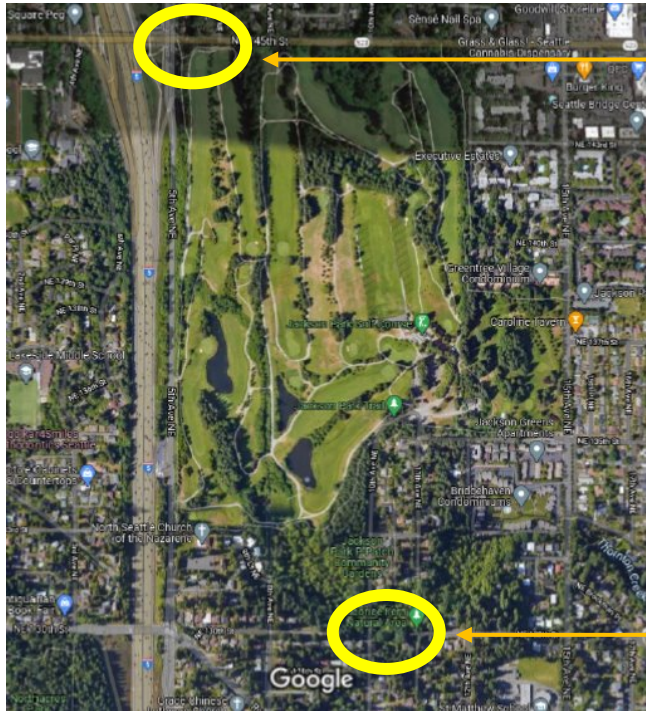
Sidewalk widening at approach to new Sound Transit Shoreline South/NE 148th Street Station

Avoids impacts to Jackson Park operations, enhances the park loop trail and replaces trees removed



Jackson Park – NE 130th Street Exchange

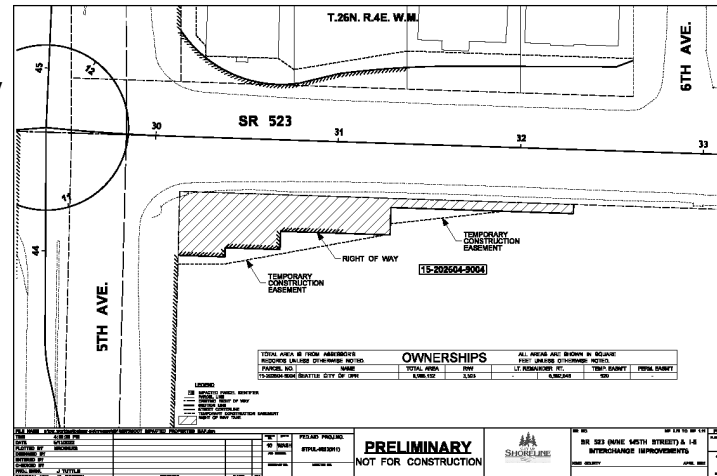
Current jurisdiction



SPR
property

SDOT
ROW

SPR Jackson Park NE 145th St frontage



SDOT NE 130th St (at Licorice Fern NA)



Questions?