

# ALL ABOARD

## SEATTLE TRANSPORTATION BENEFIT DISTRICT YEAR 2 PERFORMANCE REPORT

JUNE 2016 – JUNE 2017



Sustainability & Transportation Committee  
Andrew Glass Hastings & Rachel VerBoort  
January 19, 2018



**Seattle**  
Department of  
Transportation

# Our mission, vision, and core values

**Mission:** deliver a high-quality transportation system for Seattle

**Vision:** connected people, places, and products

Committed to **5 core values** to create a city that is:

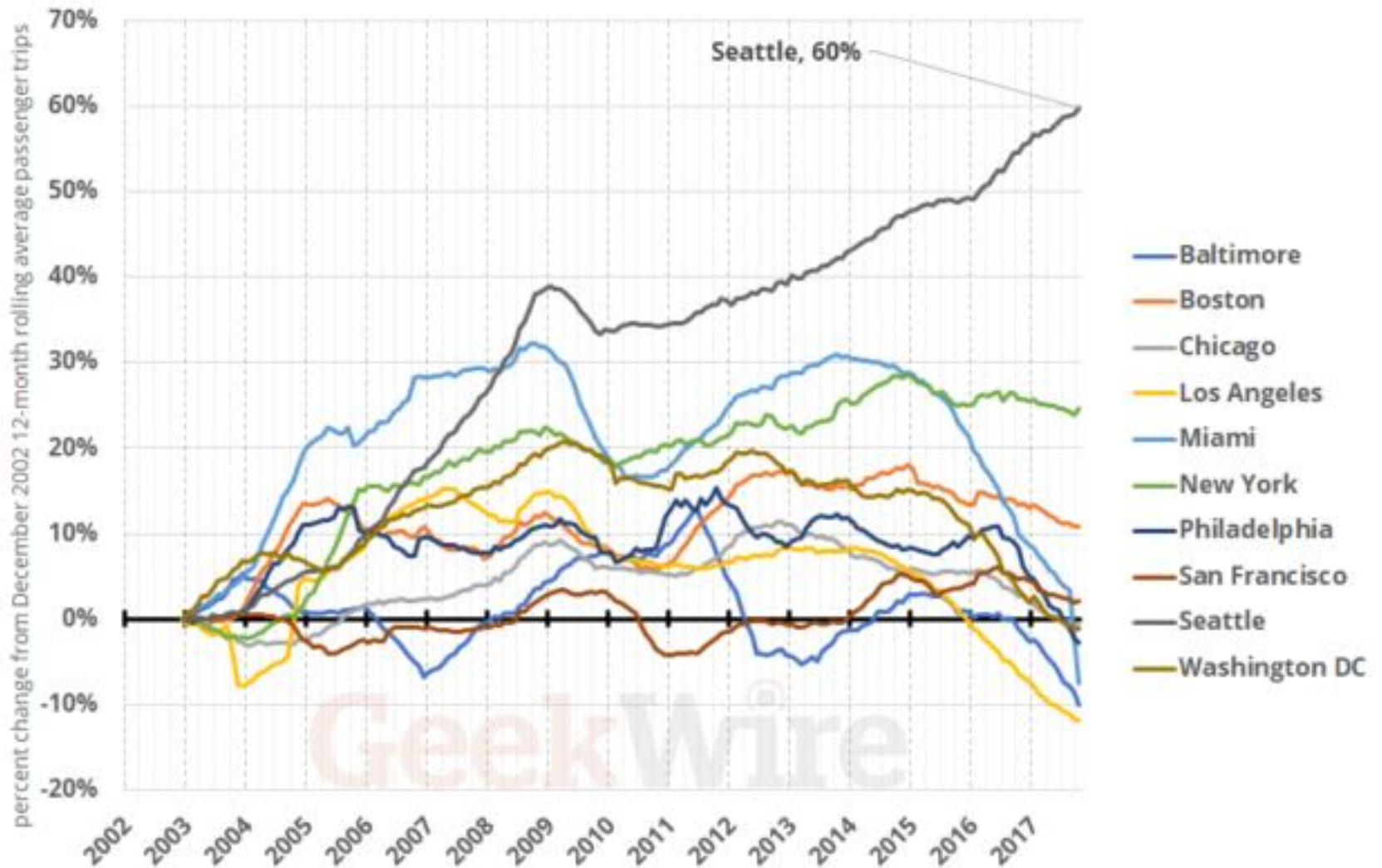
- Safe
- Interconnected
- Affordable
- Vibrant
- Innovative

For **all**

# Presentation overview

- Seattle Transportation Benefit District Overview
- Transit Service Investments
  - Performance
- Transportation Equity
  - Youth ORCA
  - ORCA LIFT
- Transit Advisory Board





# Change in Bus + Rail Ridership

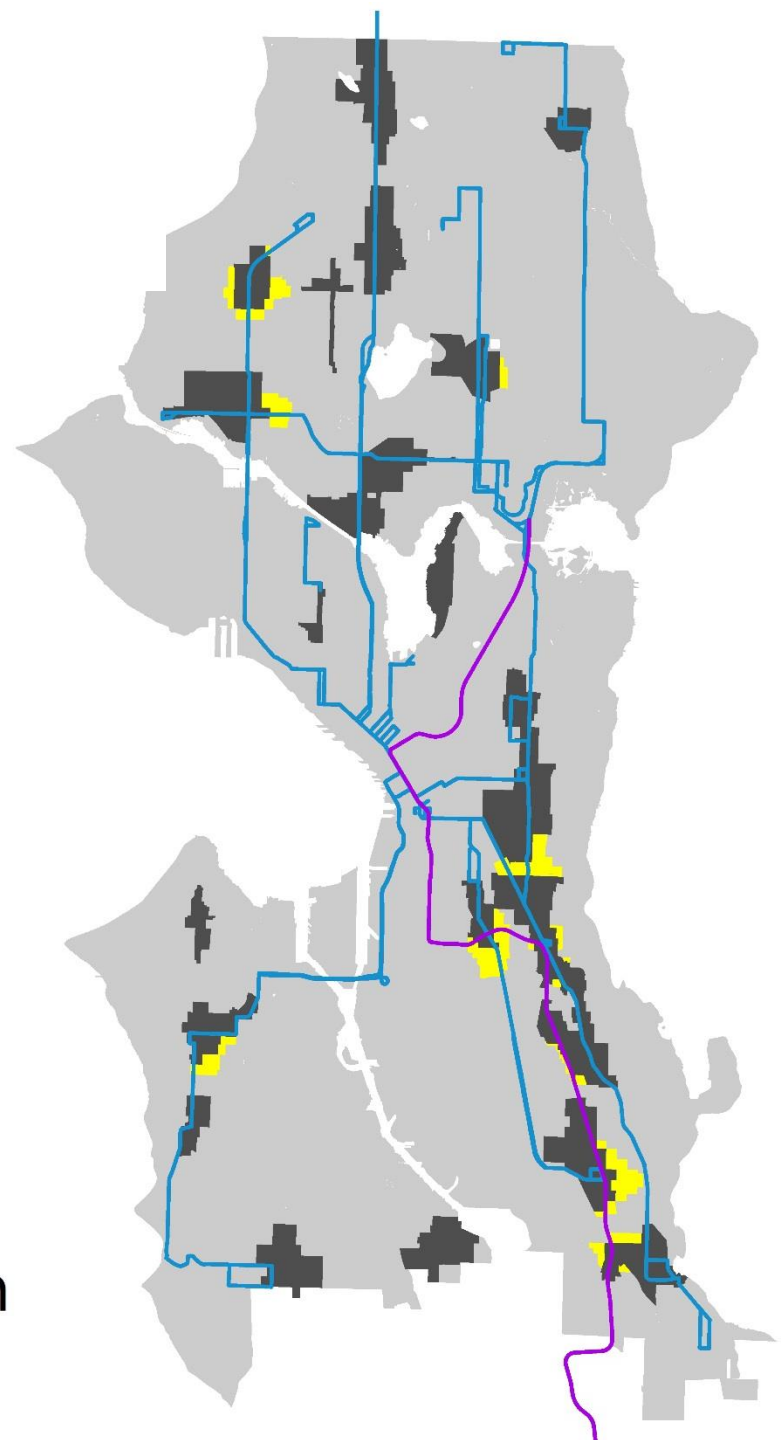


data via Federal Transit Administration's National Transit Database - <https://www.transit.dot.gov/ntd>

# The 10-Minute Network

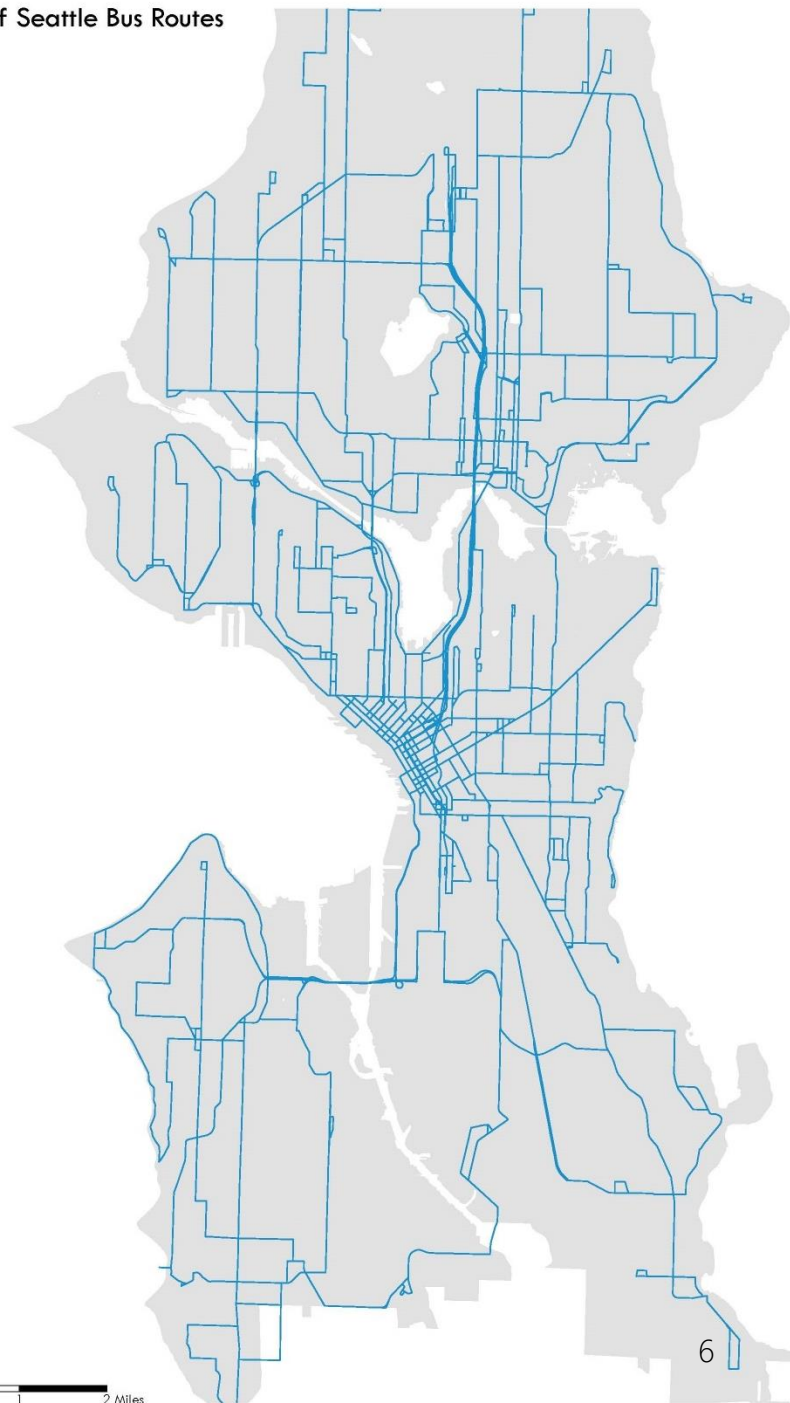
## Legend

-  Link Light Rail
-  10-Minute Network
-  Urban Villages
-  Urban Village Expansion



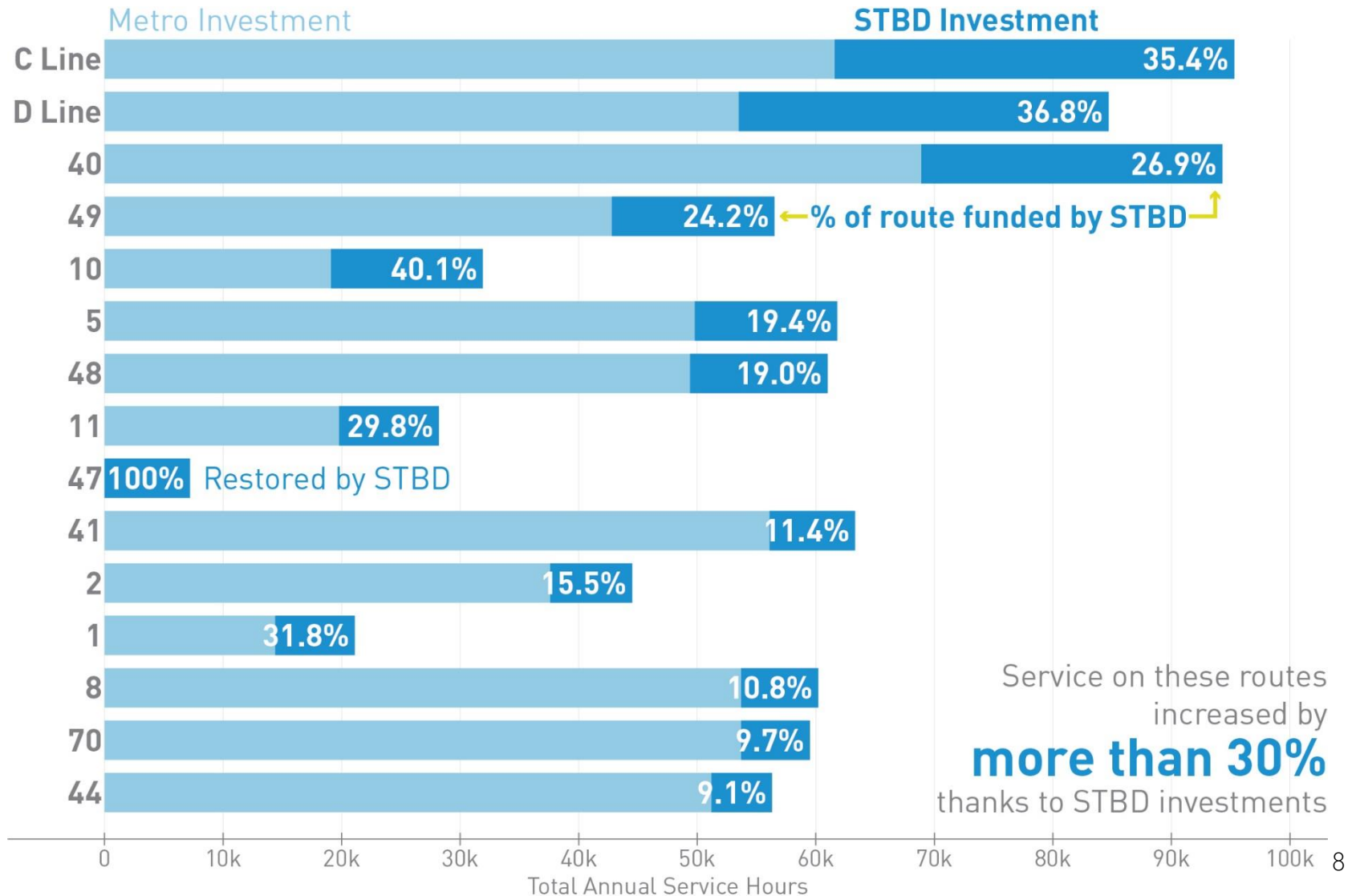
# STBD Overview

- Expand bus service across Seattle
- Improve equitable access to transit through Transportation Equity Program
- Funded through a 0.1% sales tax increase and additional \$60 annual car tab fee
- Investments guided by Seattle Transit Master Plan and Metro Service Guidelines



# Transit Service Investments

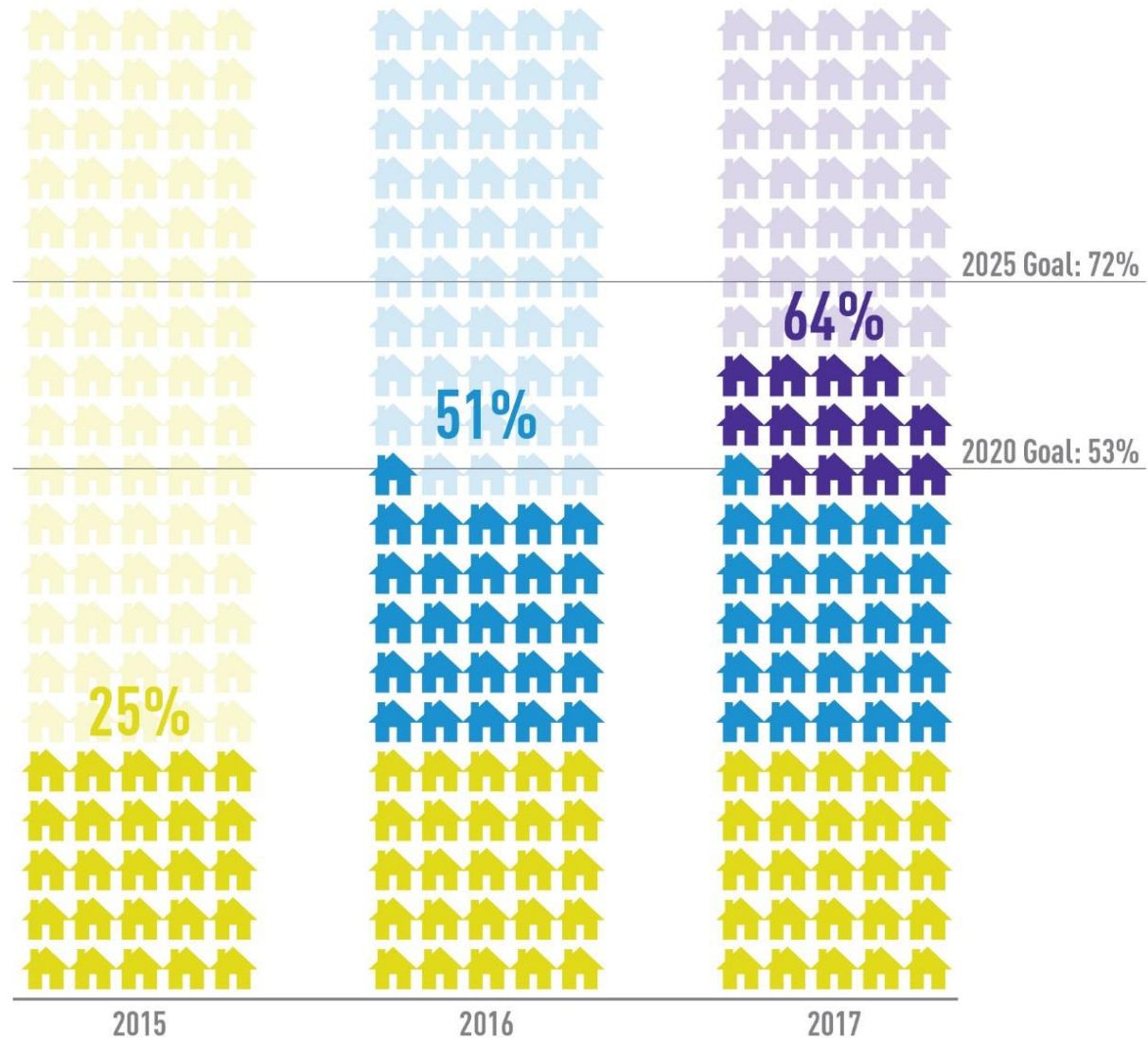
# Top 15 Service Investments



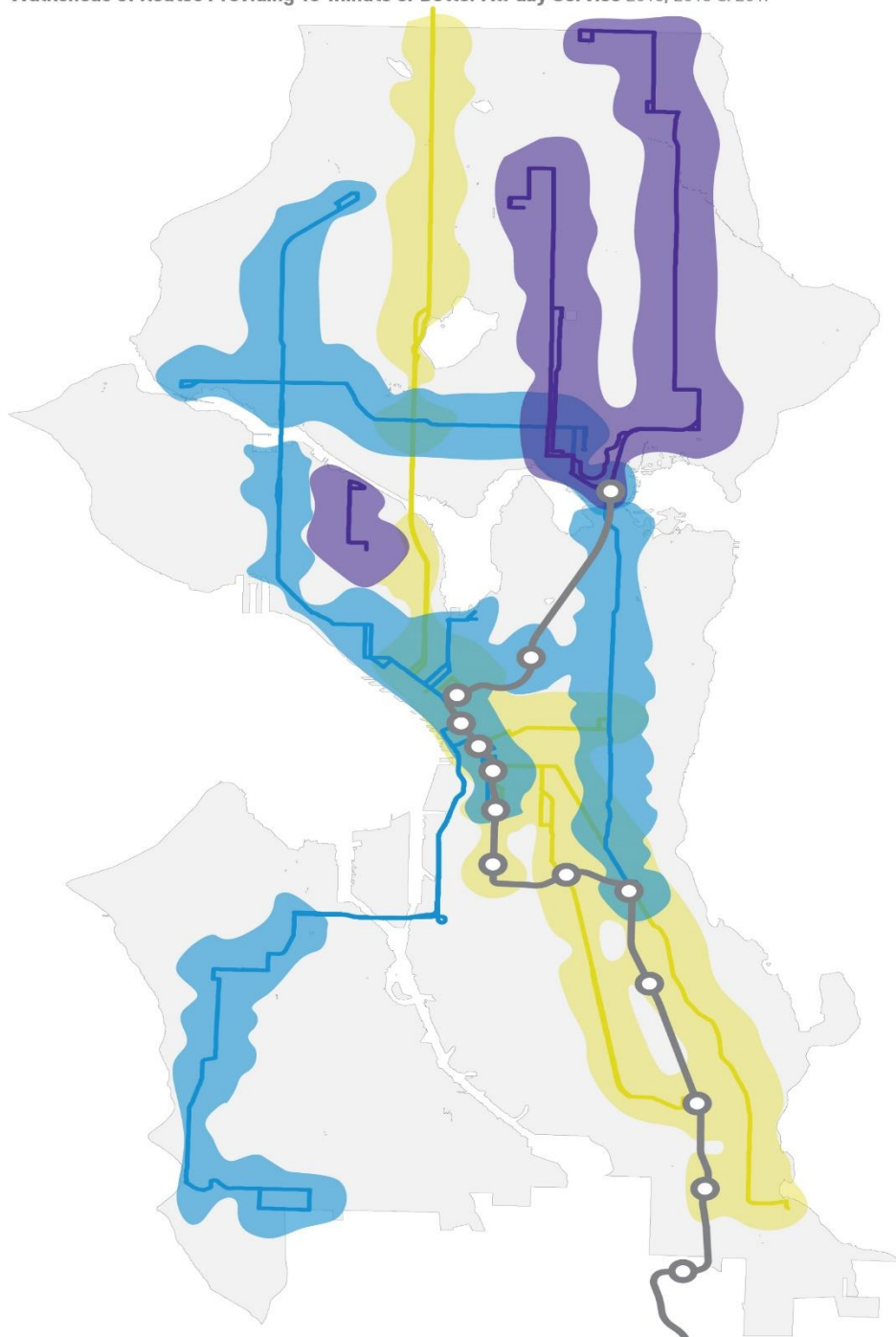
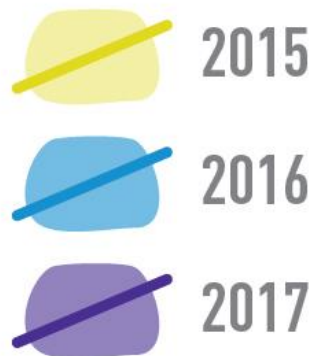


# More Access to Frequent Transit

Percent of Households within a 10-minute walk of 10-minute or better Transit Service

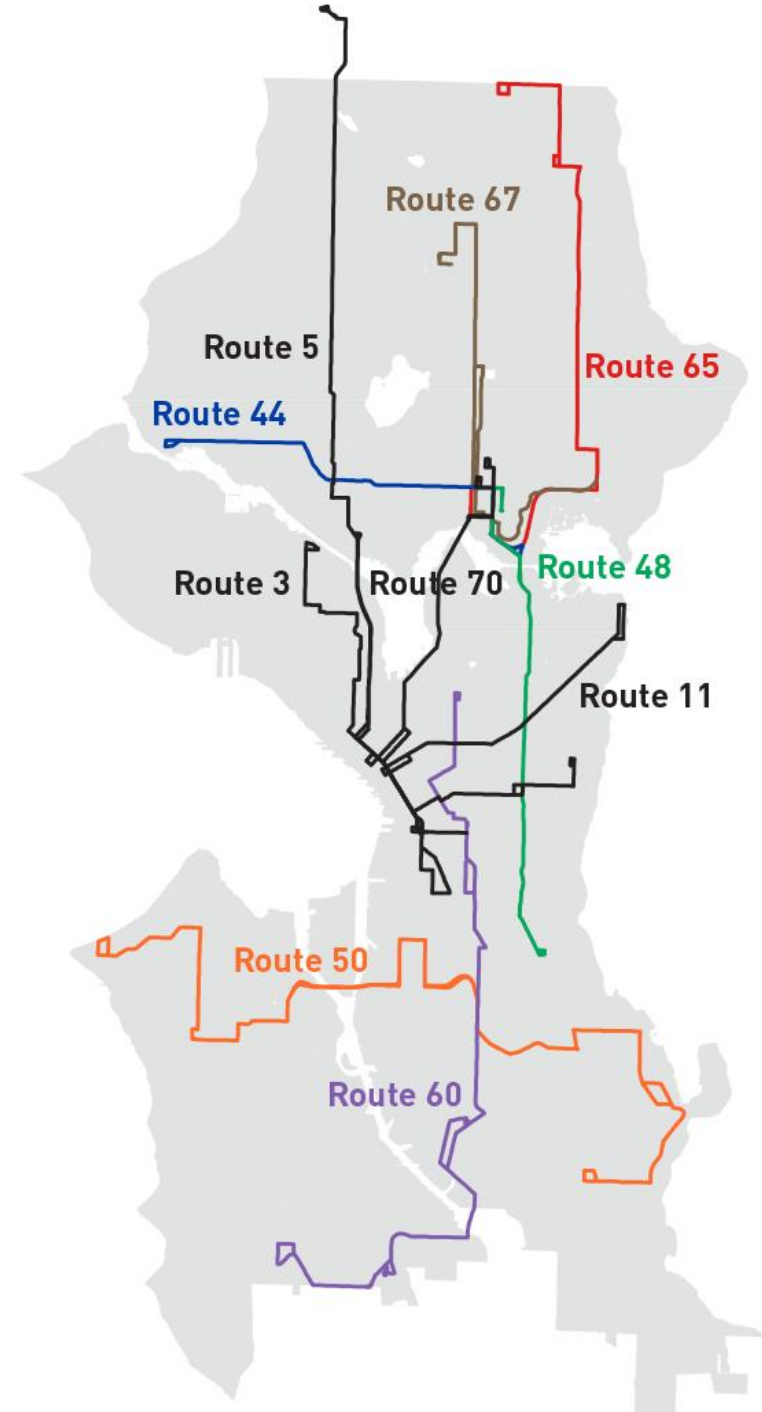


# 10-minute service expanded throughout Seattle



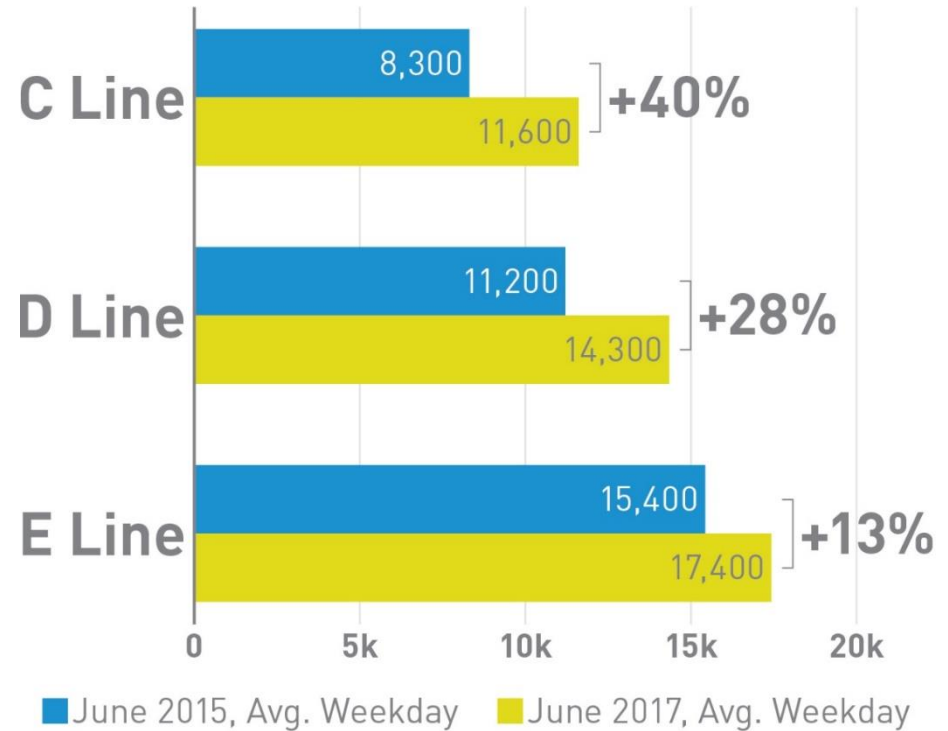
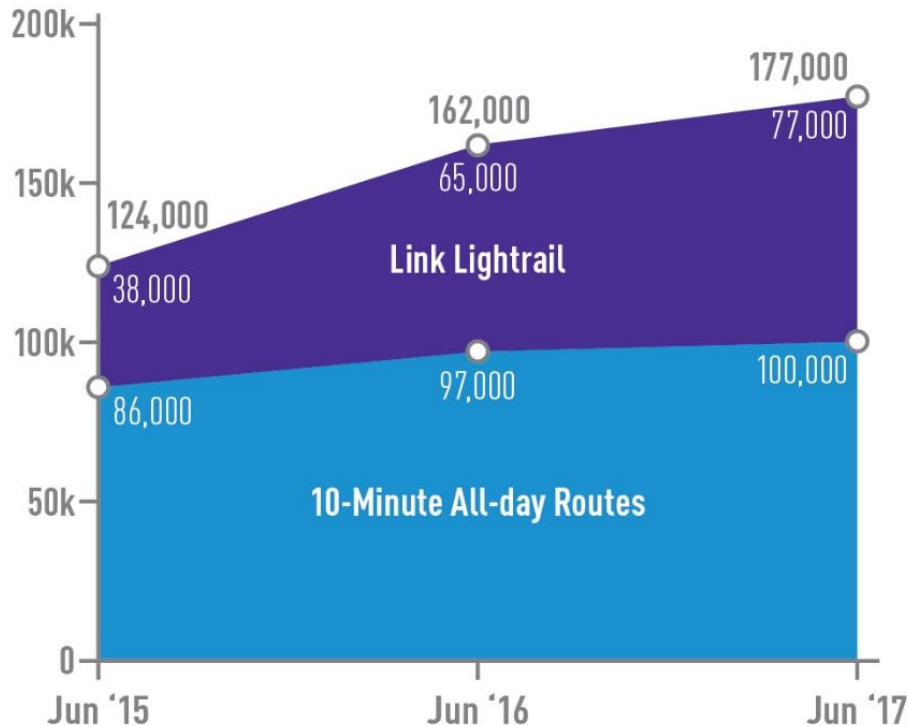
# September 2017 Investments Added

- **30-minute** service on all current & future FTN routes
- **15-minute** service to more Urban Villages
- Address results of Racial Equity Analysis
- Replace existing Night Owl and expand late night service on eight routes throughout

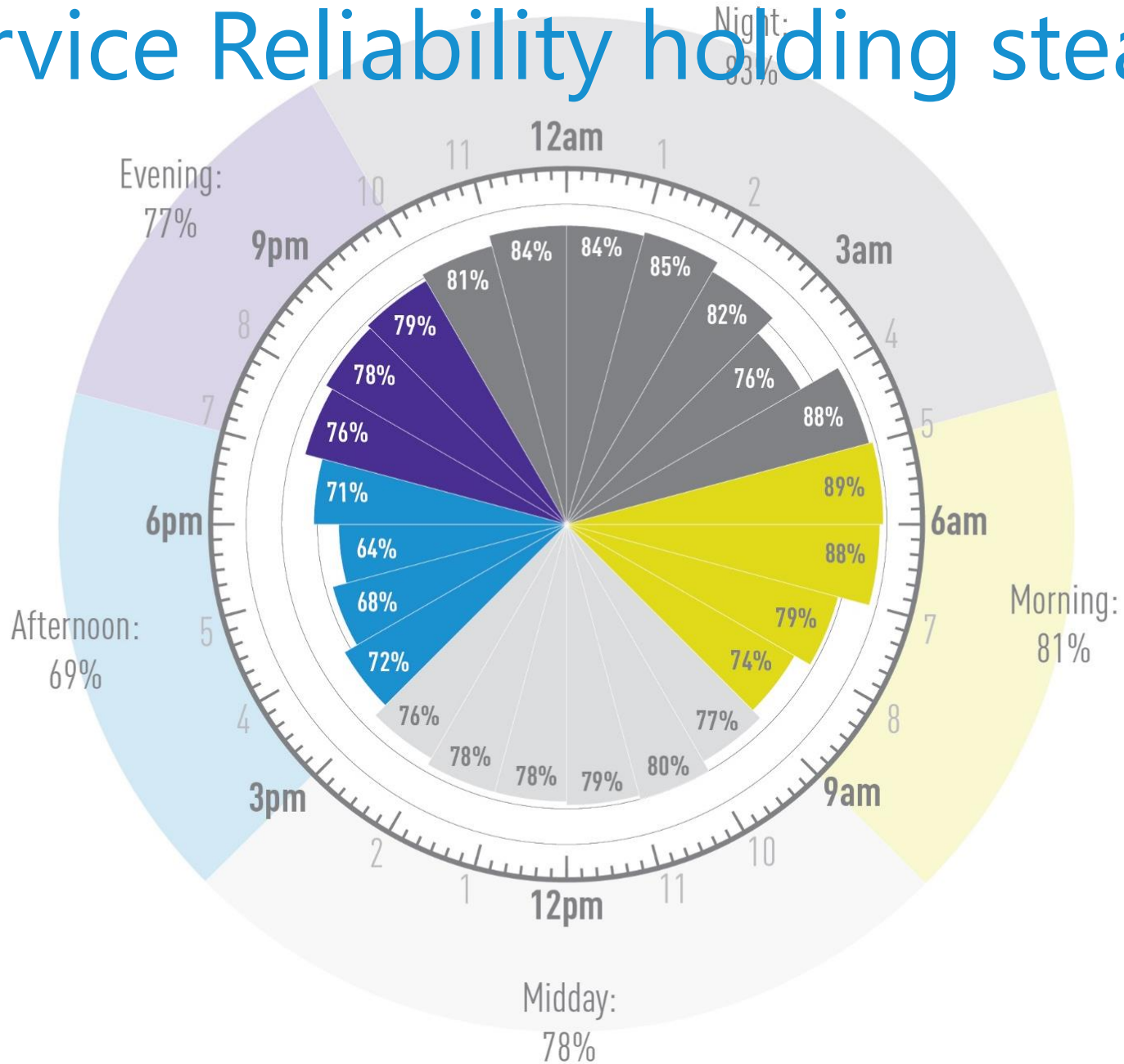


# Seattle Ridership Increasing

Daily Average Ridership on Routes with 10-minute All-Day Service & Link Light Rail 2015 - 2017



# Service Reliability holding steady



# Transportation Equity Program

Established in 2017 to increase safe, accessible, environmentally sustainable, and affordable transportation options.

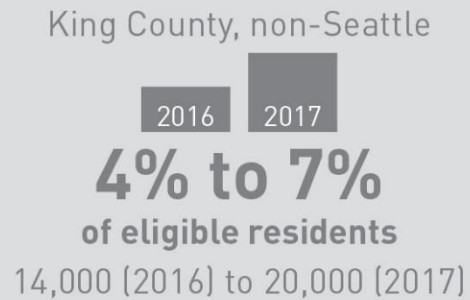
- Low-income access to transit (ORCA LIFT)
- Youth ORCA Program
- Car Tab Rebate Program
- Ambassadors Program
- Mobility Fairs
- Income eligible car share



# ORCA LIFT Ridership

- 12,225 pre-loaded cards purchased through STBD
- 68% distributed; 57% of those have been reloaded
- 886,600 total boardings; 692,754 on King County Metro services
  - 2016 to present

# ORCA LIFT Distribution





# Youth ORCA Program

June 2016 – June 2017

(12 months)

**2,680 Cards**

Distributed to low-income high school and middle school students

**440,000 Trips**

Taken by students with City of Seattle Youth ORCA cards

**\$648,000 Saved**

In bus fare by participants of the Youth ORCA program



July 2017 – Jan 2018

(6 months)

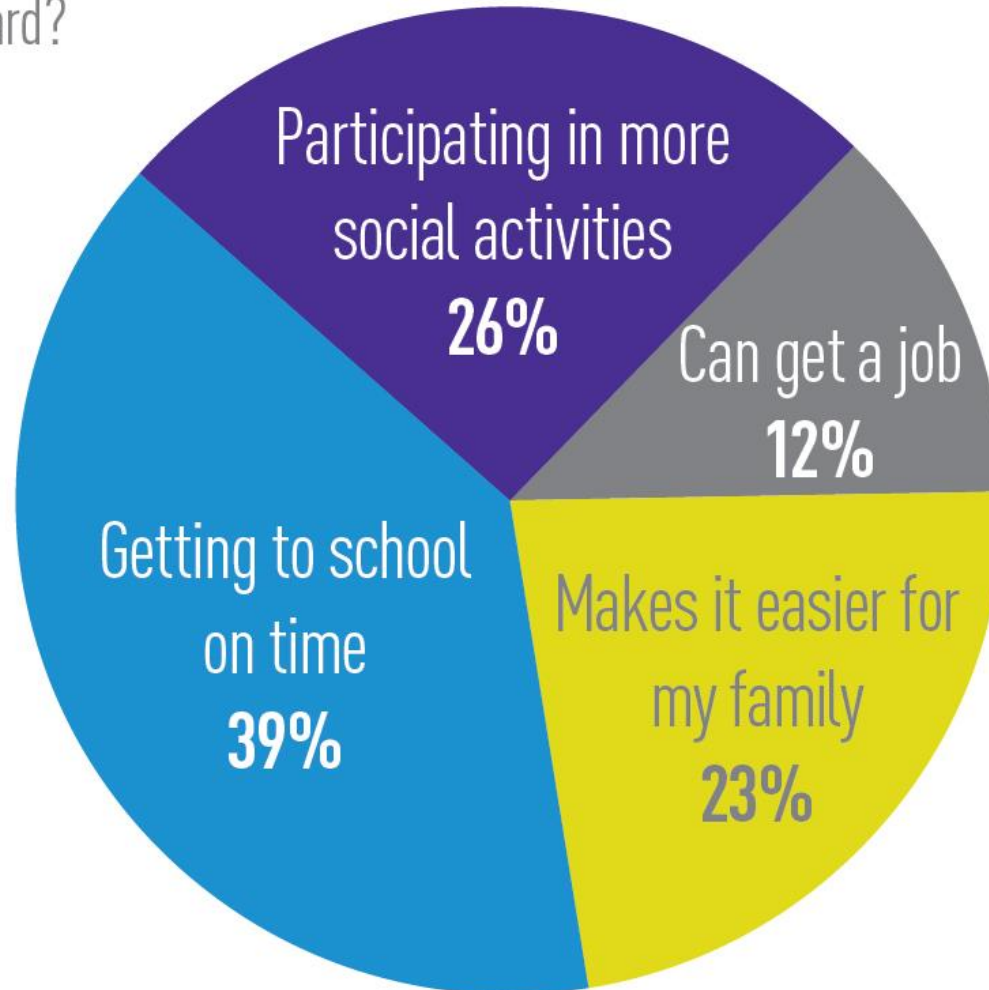
**2,974 Cards**

**247,000 Trips**

**\$330,000 Saved**

# Youth ORCA Summer 2016 Survey Results

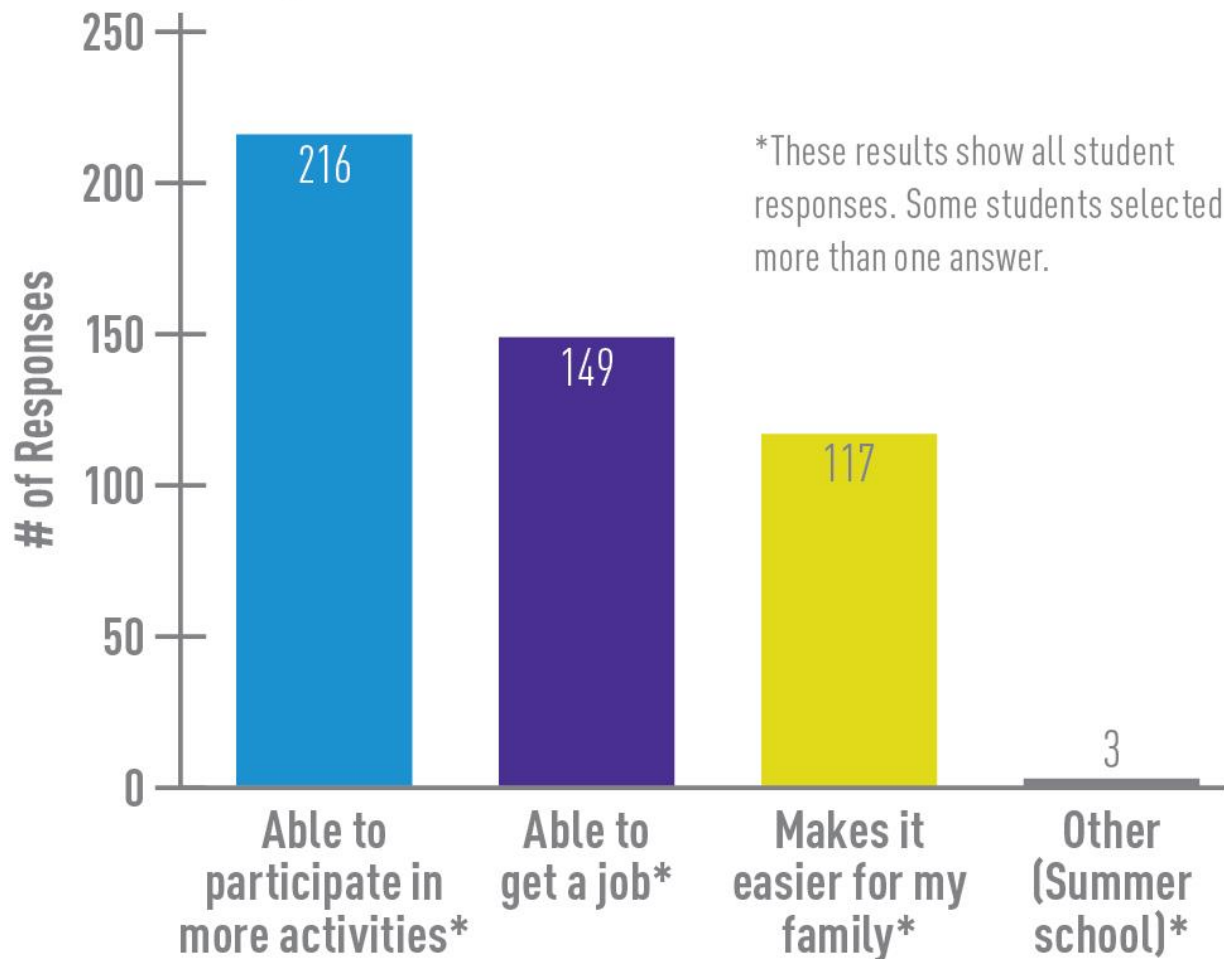
**Survey Results** - What is the most significant benefit of having an ORCA card?



\*Most students provided multiple answers

# Youth ORCA Summer 2016 Survey Results

**Survey Results** - What do you think will be the most significant benefit of having an ORCA card over the summer?



# Transit Advisory Board

# Questions?

Rachel.VerBoort@seattle.gov | (206) 684-5019  
[www.seattle.gov/transit](http://www.seattle.gov/transit)

[www.seattle.gov/transportation](http://www.seattle.gov/transportation)



**Seattle**  
Department of  
Transportation