

Seattle Department of



Landmark Designation

May 12, 2015

# Designation Standards

In order to be designated, the building, object, or site must be at least 25 years old and must meet at least one of the six standards for designation outlined in the Seattle Landmarks Preservation Ordinance ([SMC 25.12.350](#)):

- a) It is the location of, or is associated in a significant way with, a historic event with a significant effect upon the community, City, state, or nation; or
- b) It is associated in a significant way with the life of a person important in the history of the City, state, or nation; or
- c) It is associated in a significant way with a significant aspect of the cultural, political, or economic heritage of the community, City, state or nation; or
- d) It embodies the distinctive visible characteristics of an architectural style, or period, or a method of construction; or
- e) It is an outstanding work of a designer or builder; or
- f) Because of its prominence of spatial location, contrasts of siting, age, or scale, it is an easily identifiable visual feature of its neighborhood or the city and contributes to the distinctive quality or identity of such neighborhood or the City.

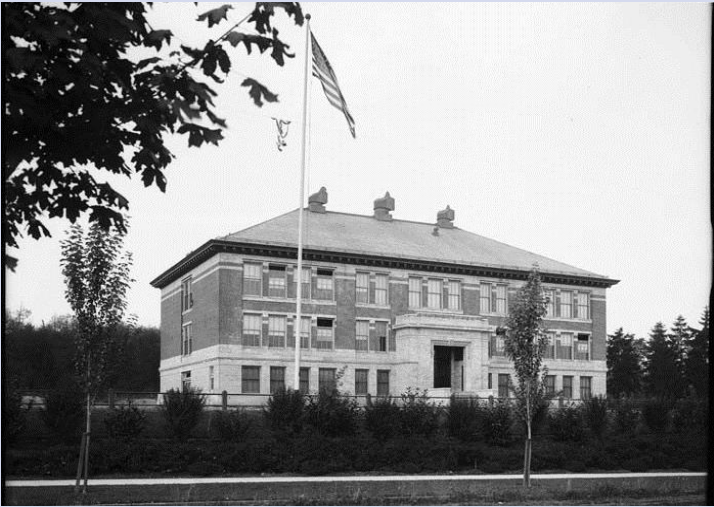
In addition to meeting at least one of the above standards, the object, site, or improvement must also possess integrity or the ability to convey its significance.

# McGilvra Elementary School

## 1617 38<sup>th</sup> Avenue East

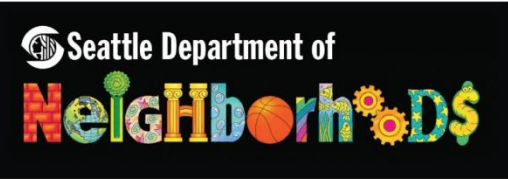
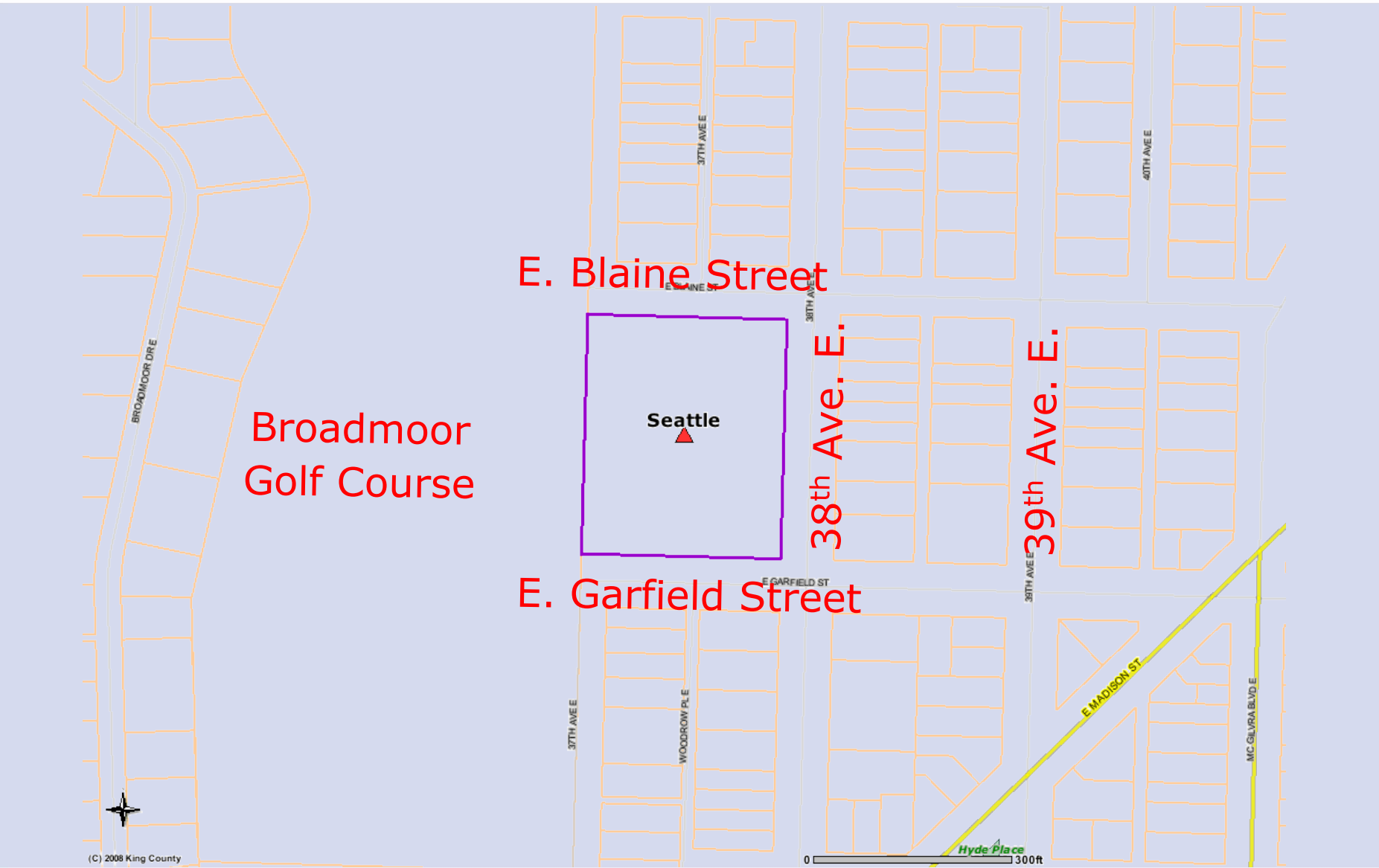


Contemporary photo, 2014



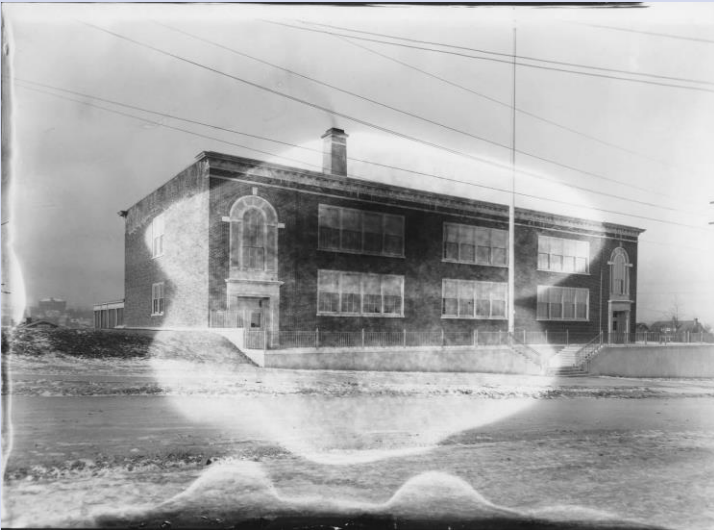
Historic photo, 1915

- **Date of Designation:**  
**October 15, 2014**
- **Designation Standards:**  
**C, D and F**
- **Controlled features:** the site; the exterior of the school; and classrooms, halls and stairs
- **Date Built:** 1913
- **Architect:** Edgar Blair





Contemporary photo, 1995

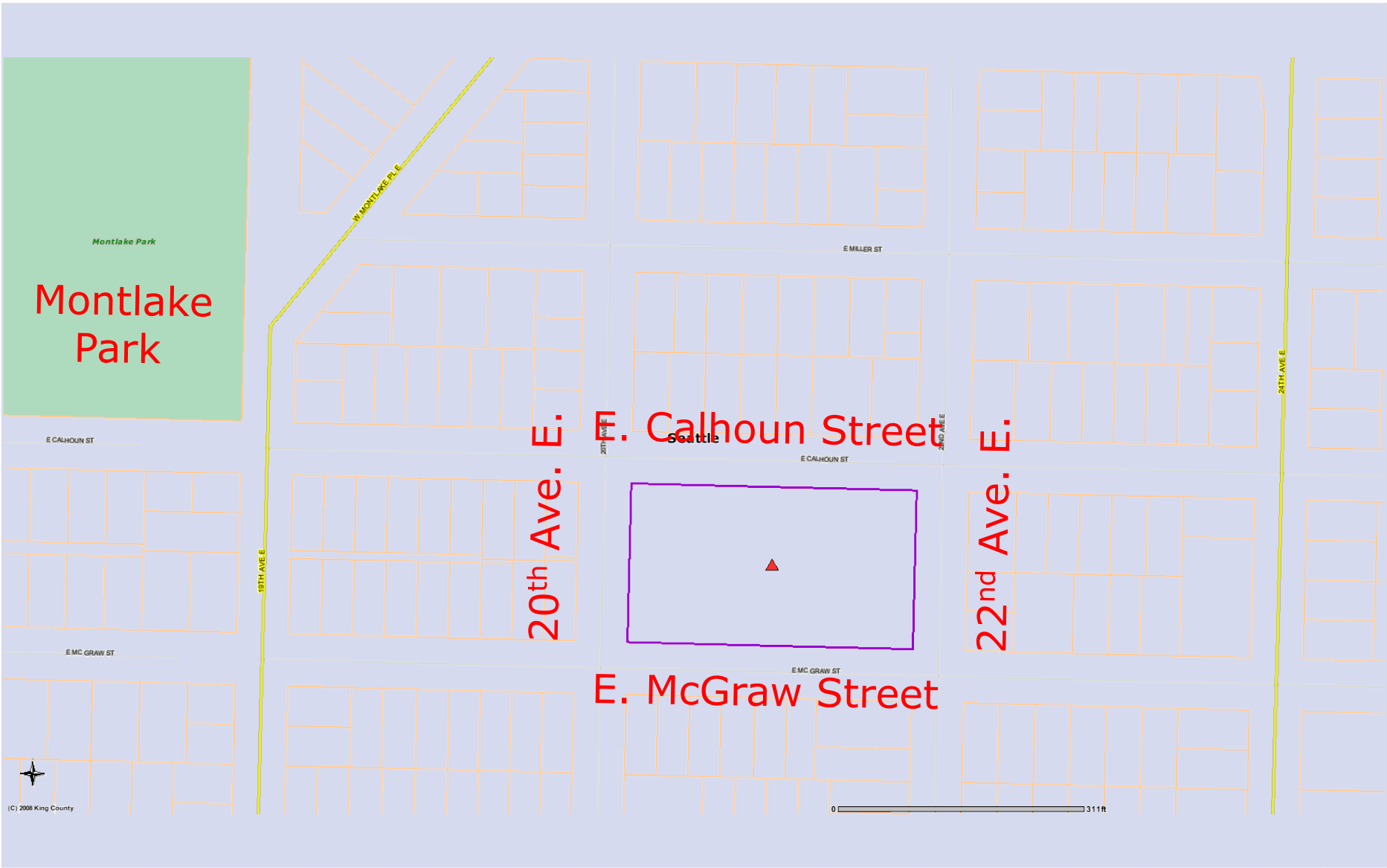


Historic photo, 1924

# Montlake Elementary School

## 2409 22<sup>nd</sup> Avenue East

- **Date of Designation:**  
**June 5, 2013**
- **Designation Standards:**  
**C, D and F**
- **Controlled features:** the site; the exterior of the main school building and covered play areas; and classroom interiors
- **Date Built:** 1924
- **Architect:** Floyd Naramore



Montlake  
Park

E. Calhoun Street  
E. McGraw Street  
20th Ave. E.  
22nd Ave. E.



(C) 2008 King County

0 311ft

