

# Equitable Development Initiative (EDI)

*OPCD's Mission: We lead collaborative planning, advance equitable development, and create great places.*

---

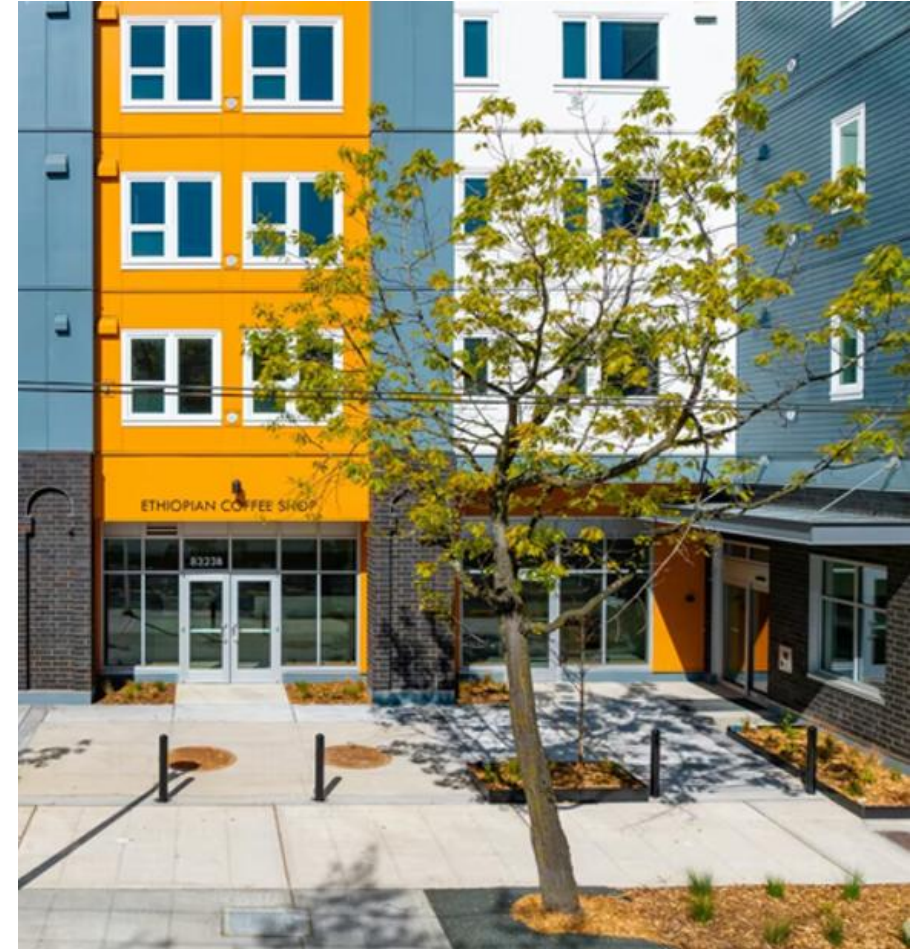
*2026 Board Reappointments*



**Seattle**  
Office of Planning &  
Community Development

# EDI Advisory Board – Purpose and Role

- The Equitable Development Initiative Advisory Board was established to:
  - Advise and provide recommendations to the City in connection with its equitable development strategies and goals.
  - Provide guidance and recommendations for the allocation of funds.
  - Promote access to opportunity for historically marginalized communities, including people of color, immigrant communities, LGBTQ+ communities, and people with disabilities within Seattle.
- Administrative support is provided to the Board by Office of Planning & Community Development staff.



Ethiopian Community of Seattle  
Ethiopian Village

# EDI Advisory Board - Terms and Appointments

- **13 Members:** Pursuant to Ordinance 126173, *all* members subject to City Council confirmation
- All EDI Advisory Board terms shall be for 3 years
- No member shall serve more than two consecutive terms
- **3** City Council-appointed
- **3** Mayor-appointed
- **7** Advisory Board-appointed



Tubman Center for Health and Freedom

# EDI Advisory Board - Current Reappointments

Position 10, 8, and 13 are up for reappointment.

All three positions are board appointed.

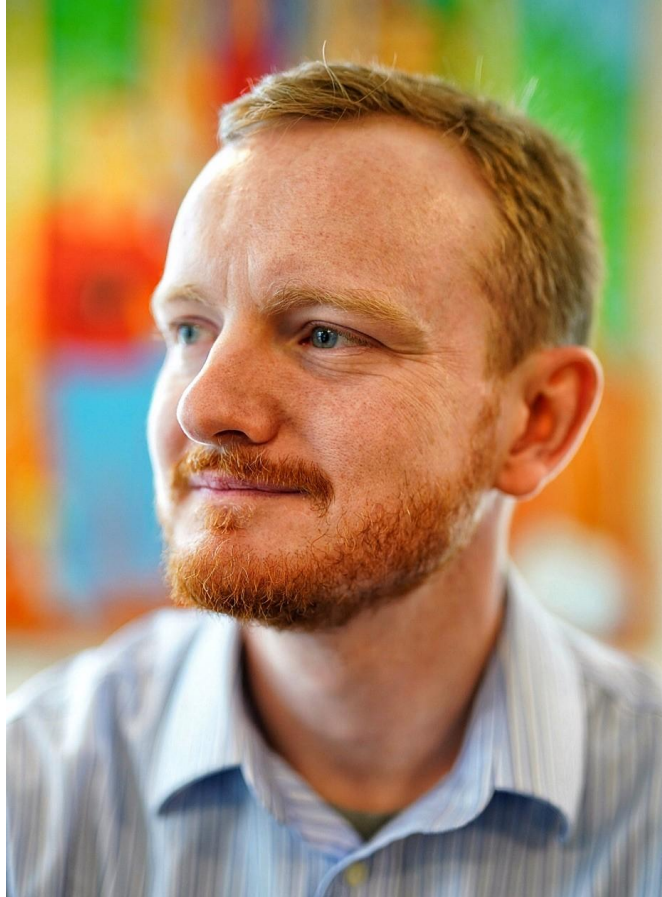
The board members have completed their first term and will be reappointed to their second term.

# Diana Paredes - Position 10



- A native-born Ecuadorian who has called Seattle home since 2015. Has worked with local nonprofits in applied research and evaluation focused on equitable development, civic engagement, and leadership development programs for underrepresented communities.
- Holds a Bachelor's in International and Global Studies from The University of California and a Master's in Social Work from the University of Washington.
- Is currently employed with King County Children, Youth & Young Adults Program within DCHS as an evaluator.

# James "Jamie" Madden - Position 8



- Originally from Boston, Jamie moved to Seattle in 2016. As a real estate project manager at The Community Builders, Inc, he oversaw a variety of development projects including low-income, middle-income, and market-rate housing; new construction, acquisition and preservation; rental, homeownership, and retail.
- He directed Enterprise Community Partners' Pacific Northwest Market office in Seattle, where he launched the Home & Hope initiative to transform public properties into housing and early learning centers and founded the WA Early Learning Loan Fund.
- He is currently a principal of Madden-Kim Consulting and is a Housing Developer at Beacon Development Group.
- He recently wrote a book titled "Bittersweet Lane: How We Create Homes. Focus on affordable housing crisis."

# Sophia Benalfew - Position 13



- Sophia born and raised in Ethiopia, moved to the US in 2013. She is the Executive Director for Ethiopian Community in Seattle (ECS). Prior, Sophia worked for Oxfam and CARE.
- At Oxfam, Sophia was a lead for a global program named R4 Rural Resilience based in Addis Ababa, Ethiopia and later in Boston, MA. The program, implemented in four countries in Africa, has now become a major component of World Food Program's Climate Risk Management Approach.
- At CARE, Sophia worked as a senior Technical Advisor on Climate Change and Resilience. Supported the design and implementation of various programs in Africa, Asia and Latin America.
- To her the key to designing and implementing sustainable and equitable programs is to recognize the wealth of knowledge in communities served and partner with them.