

Accepting Tieback Easement Private Property adjacent to Seward Park

City Council

Seattle Public Utilities and Neighborhoods

Committee

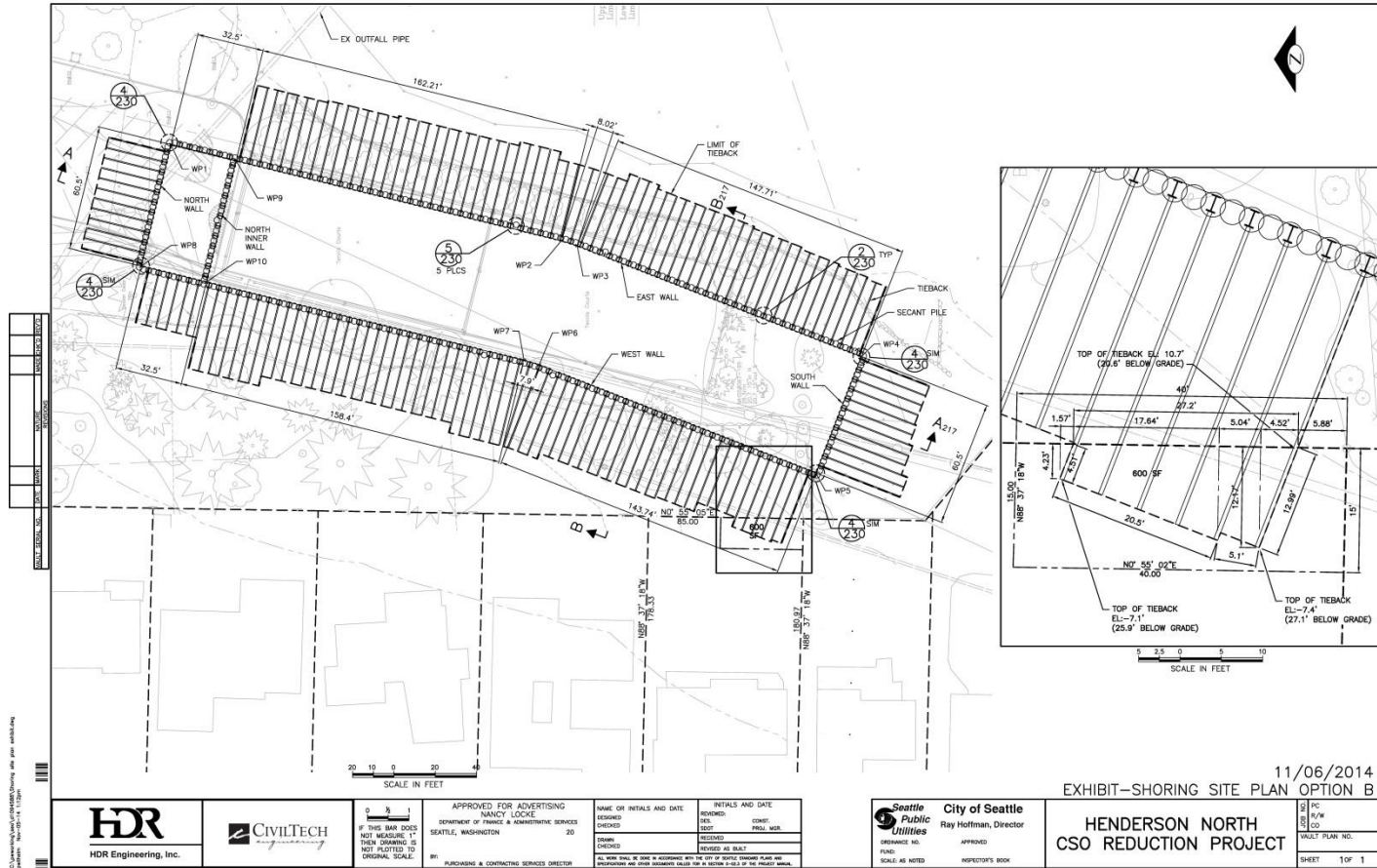
November 19, 2015

Seattle
 Public
Utilities

Overview

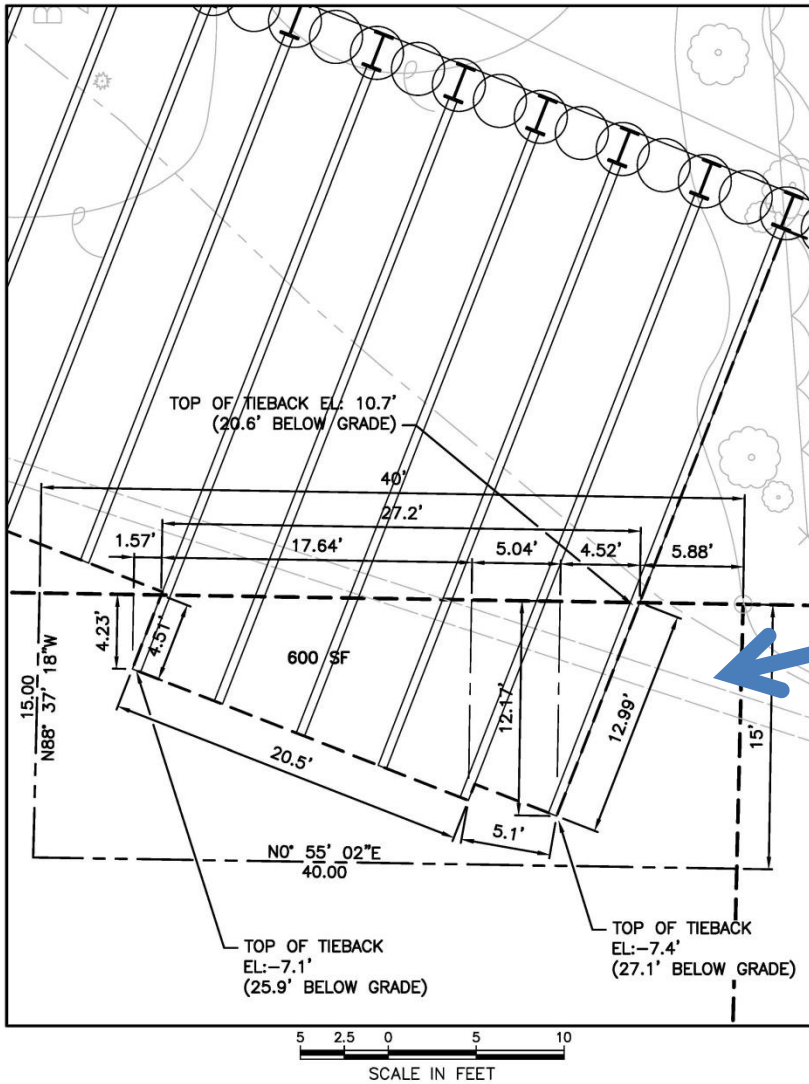
- Underground Combined Sewer Storage Tank under construction in Seward Park
- Use of tiebacks extending into private property reduce tank construction costs by \$205,000
- Property owner granted SPU a tieback easement for \$26,472

Engineering Plan



 HDR Engineering, Inc.	 CIVILTECH	APPROVED FOR ADVERTISING NANCY LOCKE DEPARTMENT OF FINANCE & ADMINISTRATIVE SERVICES SEATTLE, WASHINGTON 20	NAME OF INITIALS AND DATE DESIGNED CHECKED DRAWN REVISIONS AS BUILT	INITIALS AND DATE REVIEWED DATE COMMENTS PREP. WORK REVISIONS AS BUILT	 City of Seattle Ray Hoffman, Director	LICENSE NO. APPROVED FUND SCALE AS NOTED	INSPECTOR'S BOOK	SHEET 1 OF 1
		PURCHASING & CONTRACTING SERVICES DIRECTOR	PURCHASING & CONTRACTING SERVICES DIRECTOR	PURCHASING & CONTRACTING SERVICES DIRECTOR	PURCHASING & CONTRACTING SERVICES DIRECTOR	PURCHASING & CONTRACTING SERVICES DIRECTOR	PURCHASING & CONTRACTING SERVICES DIRECTOR	PURCHASING & CONTRACTING SERVICES DIRECTOR

Detail showing tiebacks in private property



Today's Legislation

- Accepts Tieback Easement
- Places it under the jurisdiction of Seattle Public Utilities

Questions?