

Power Supply Briefing

Sustainability, City Light, Arts & Culture Committee

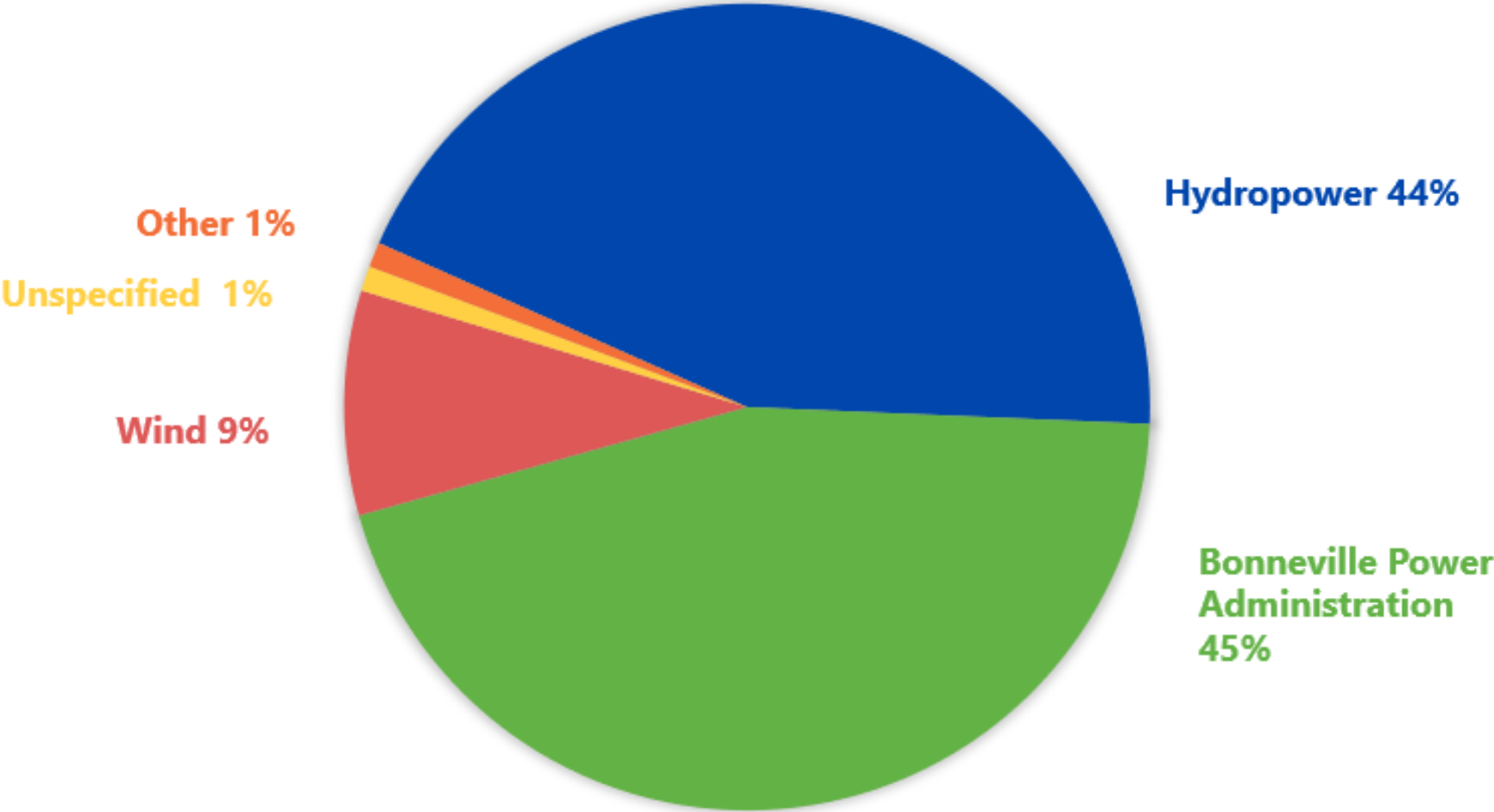
July 11, 2025



Seattle City Light



WE POWER SEATTLE

2024 City Light Power Resources



The BPA's federal hydropower network

Bonneville Power Administration sells electricity from 31 federal dams. In all, the dams can generate up to 22,060 megawatts of electricity, but in an average year generate 8,716 megawatts, nearly enough to supply more than seven Seattle-sized cities.

-  BPA service area
-  Federal dam

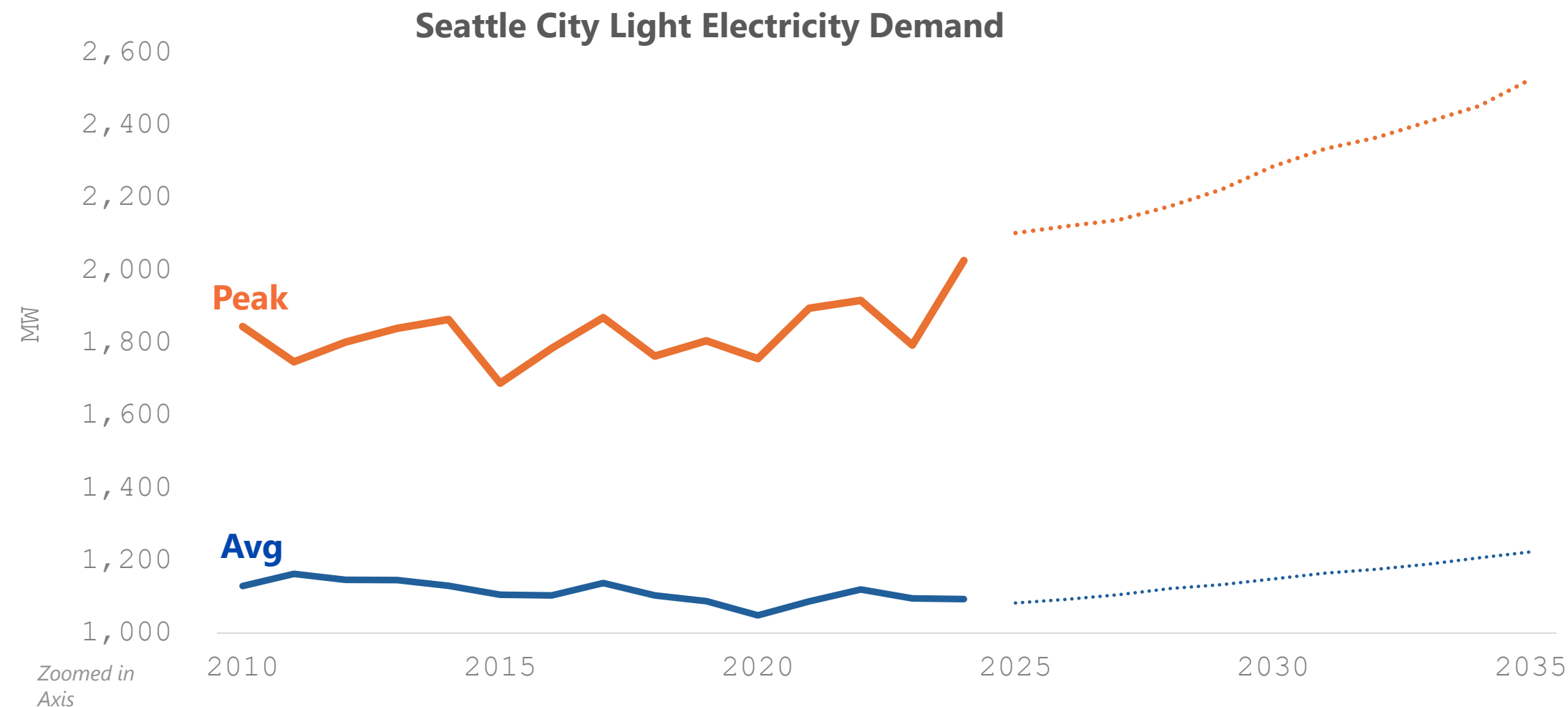
**The BPA also markets electricity from the Energy Northwest nuclear-power plant near Richland. It has the capacity to generate 1,207 megawatts.*



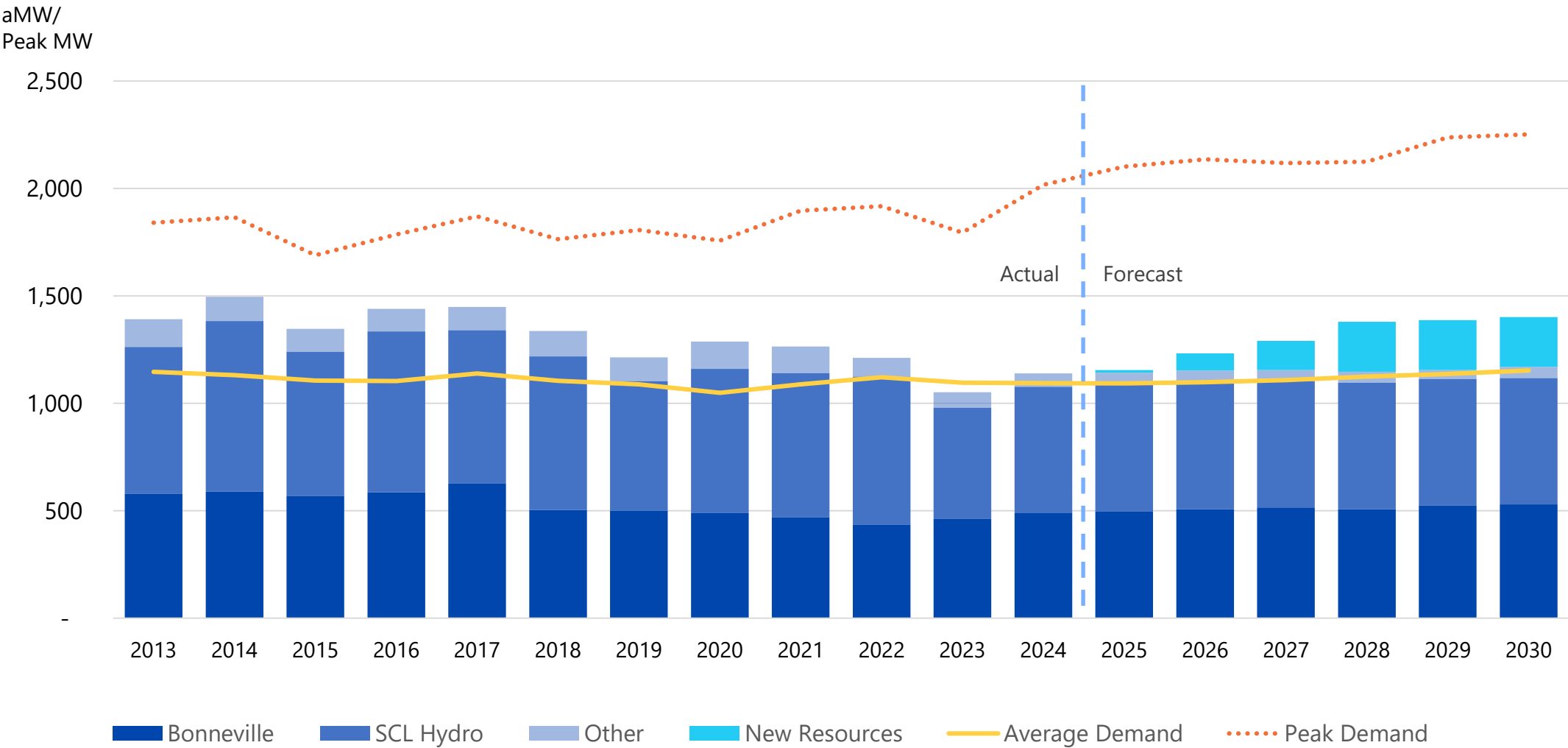
Sources: Esri, Bonneville Power Administration

MARK NOWLIN / THE SEATTLE TIMES

Growth in Electricity Use



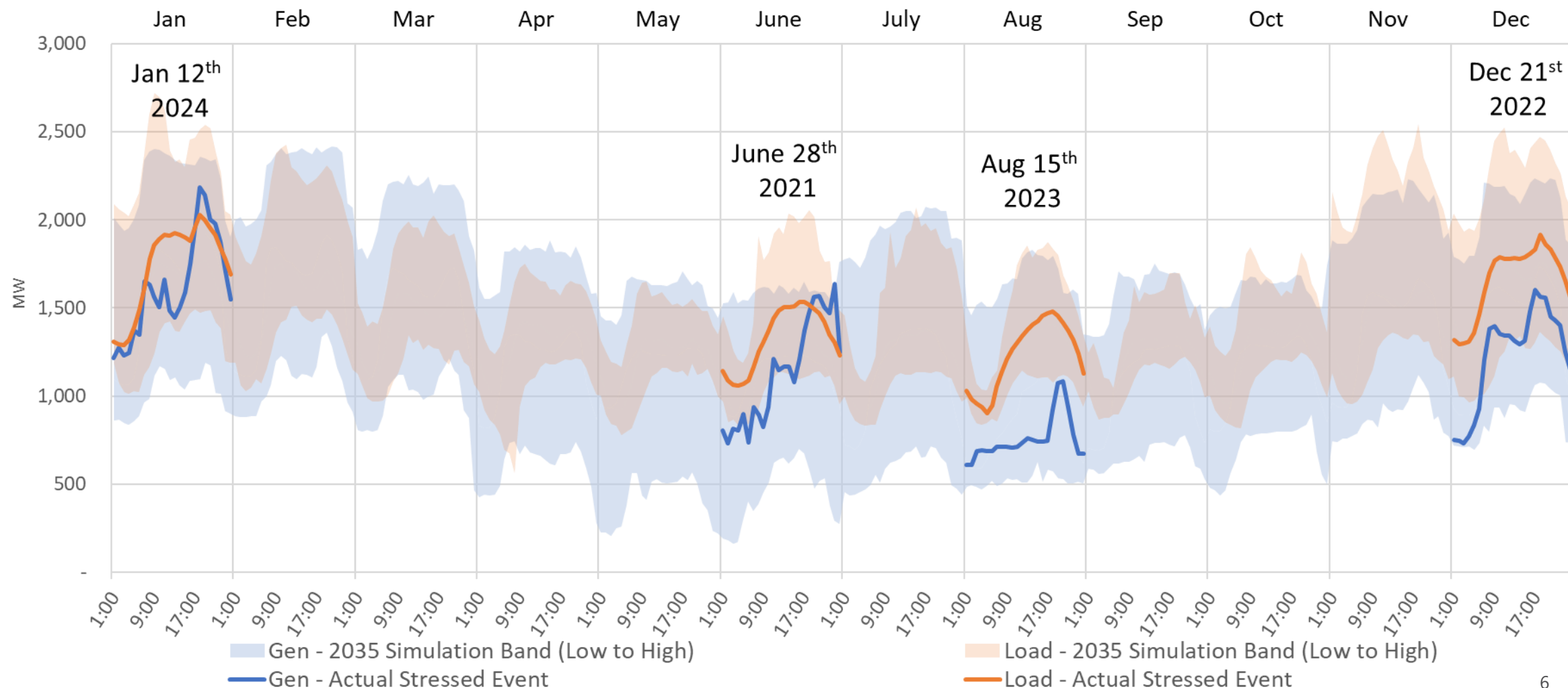
Meeting Growing Electricity Demand



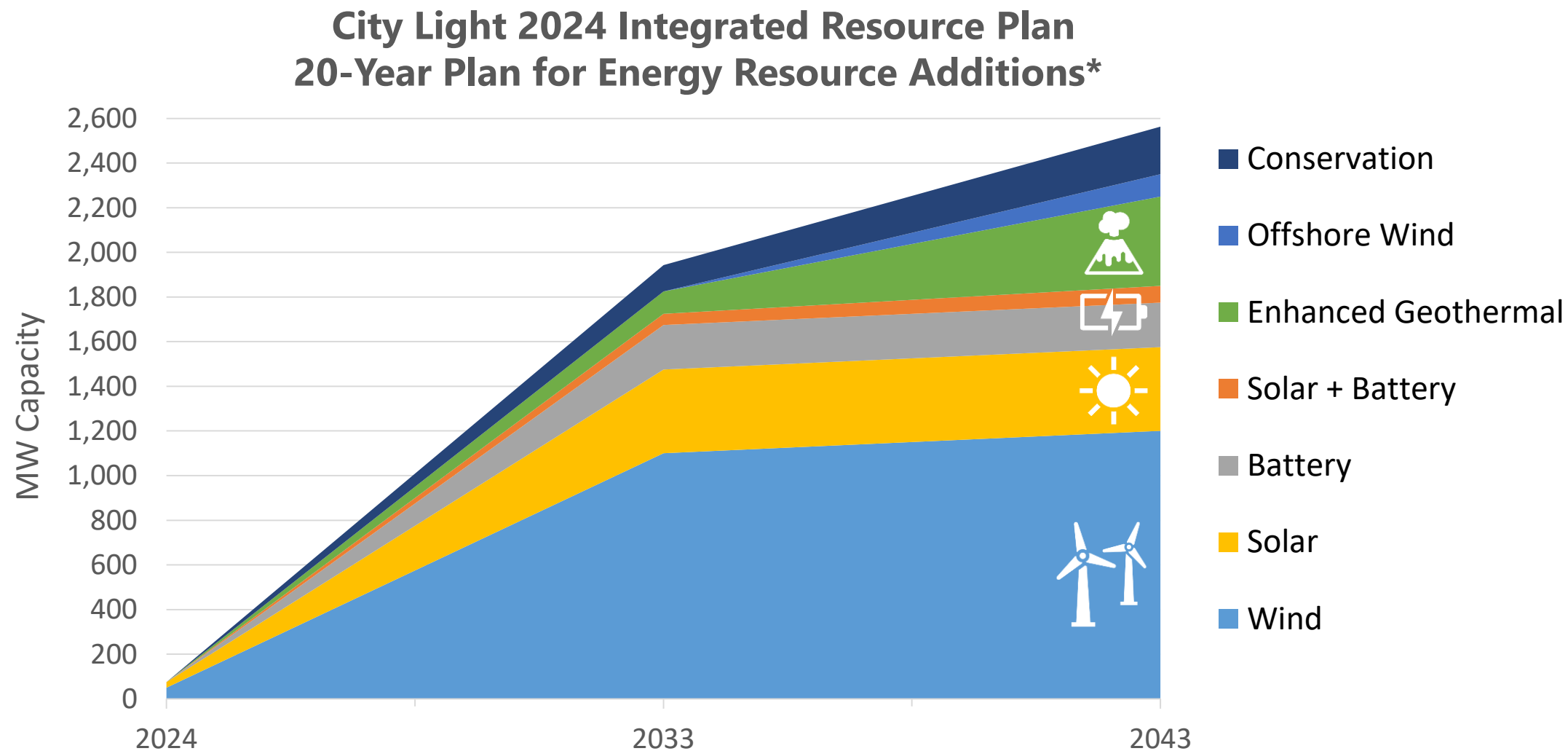
Source: Seattle City Light Department, Finance Division

Comparing Simulation Ranges to Stressed Events

Stressed Conditions vs 2035 Simulated Load & Resource Balance

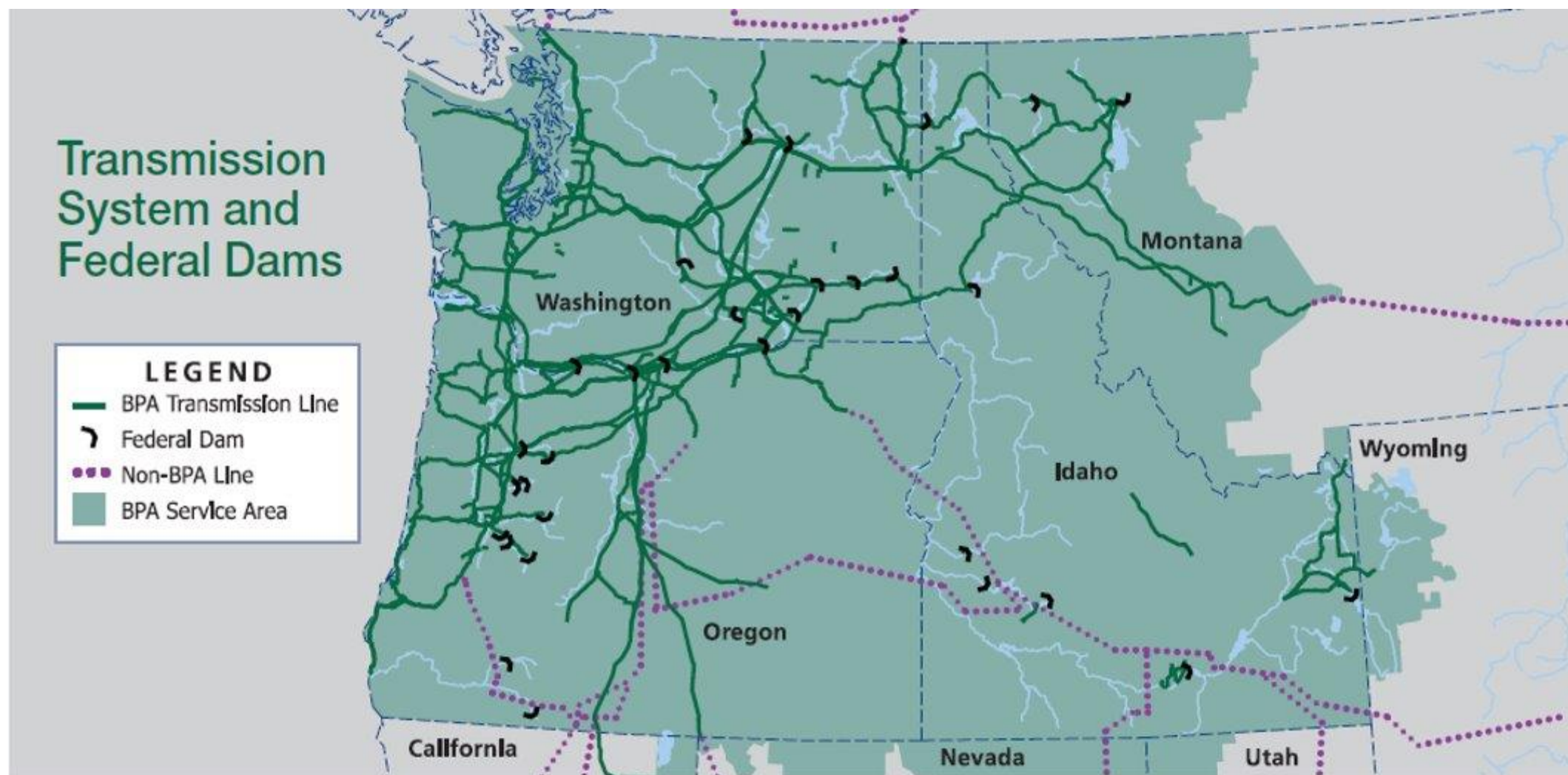


Planning Acquisitions for Future Clean Energy Needs



* Source: [2024 Seattle City Light IRP Progress Report](#)

No Transition Without Transmission



Regional Collaborations To Address Challenges

- Western Resource Adequacy Program
- Energy Northwest
- WestTEC
- PPC Long Range Planning
- NW Power Conservation Council
- Public Generating Pool – Resource Adequacy Study
- WA Clean Energy Siting Council
- WA Energy Facility Site & Evaluation Council



THANK YOU



Seattle City Light