

RACE AND SOCIAL EQUITY IN SEATTLE'S COMPREHENSIVE PLAN



Equitable Development Initiative

Together we can leverage our collective resources to create communities of opportunity for everyone, regardless of race or means

- **COMPREHENSIVE PLAN** updated with race and social equity framework
- **STRATEGIC IMPLEMENTATION** to prevent displacement by providing economic opportunity
- **COMMUNITY BUILDING** creating the place and structure to support equitable participation and decision making

Comprehensive Plan Race and Social Equity Resolution

- Race and Social Equity as a Core Value
- Equity goals and policies
- Equity analysis of growth scenarios
- Equity measures
- Inclusive public stewardship



Equity Analysis of Growth Alternatives

How can we grow while making sure everyone has what they need to succeed and thrive?

- Are different distributions of growth more or less likely to have an impact on displacement of marginalized people and/or affect their access to opportunity?
- What mitigation strategies and investments are necessary to address the impacts of growth and maximize opportunities for equitable development?

Displacement Risk Index

Vulnerability

- Nonwhite population
- Low English-speaking ability
- Low educational attainment
- Rental tenancy
- Housing cost burden
- Income below 200% of poverty

Amenities

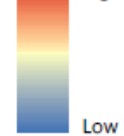
- Proximity to frequent bus service
- Proximity to current or future Link light rail and streetcar
- Proximity to regional job center
- Proximity to already-gentrified or affluent neighborhood
- Proximity to core businesses (grocery, pharmacy, restaurant/cafe)
- Proximity to civic infrastructure (school, community center, park, library)

Development capacity and rent

- Residential parcels with high development potential
- Below-average median rent

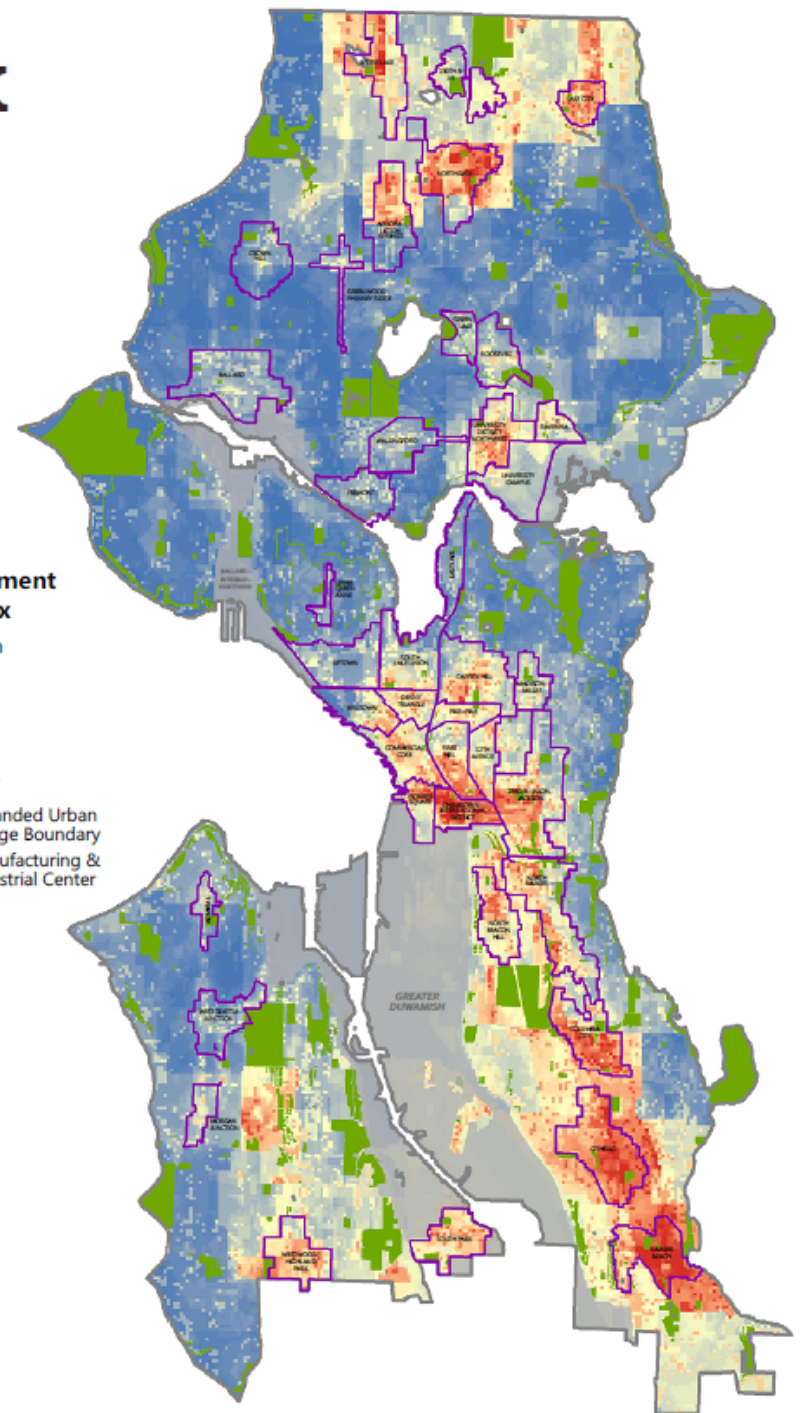
Displacement risk index

High



Low

- Expanded Urban Village Boundary
- Manufacturing & Industrial Center



Access to Opportunity Index

Education

High-performing elementary / middle school
(reading and math)

Above-average high school graduation rate

Transit time to university / college

Proximity to library

Economic opportunity

Number of jobs within two-mile radius

Change in median home value 2000-2013

Transit access

Proximity to frequent bus service

Proximity to current/future light rail/streetcar

Civic infrastructure

Proximity to community center

Proximity to park

Health

Proximity to public health facility

Proximity to store with fresh produce

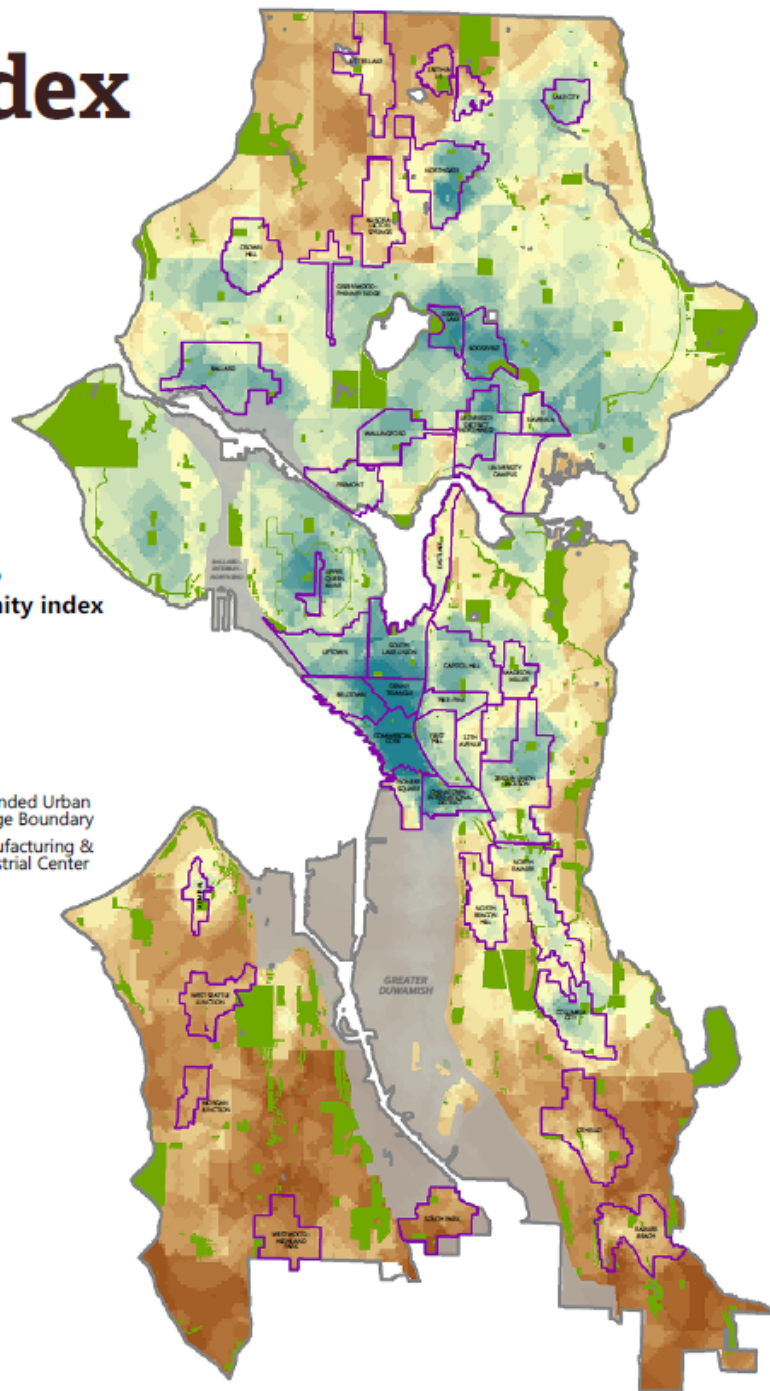
Access to opportunity index

High

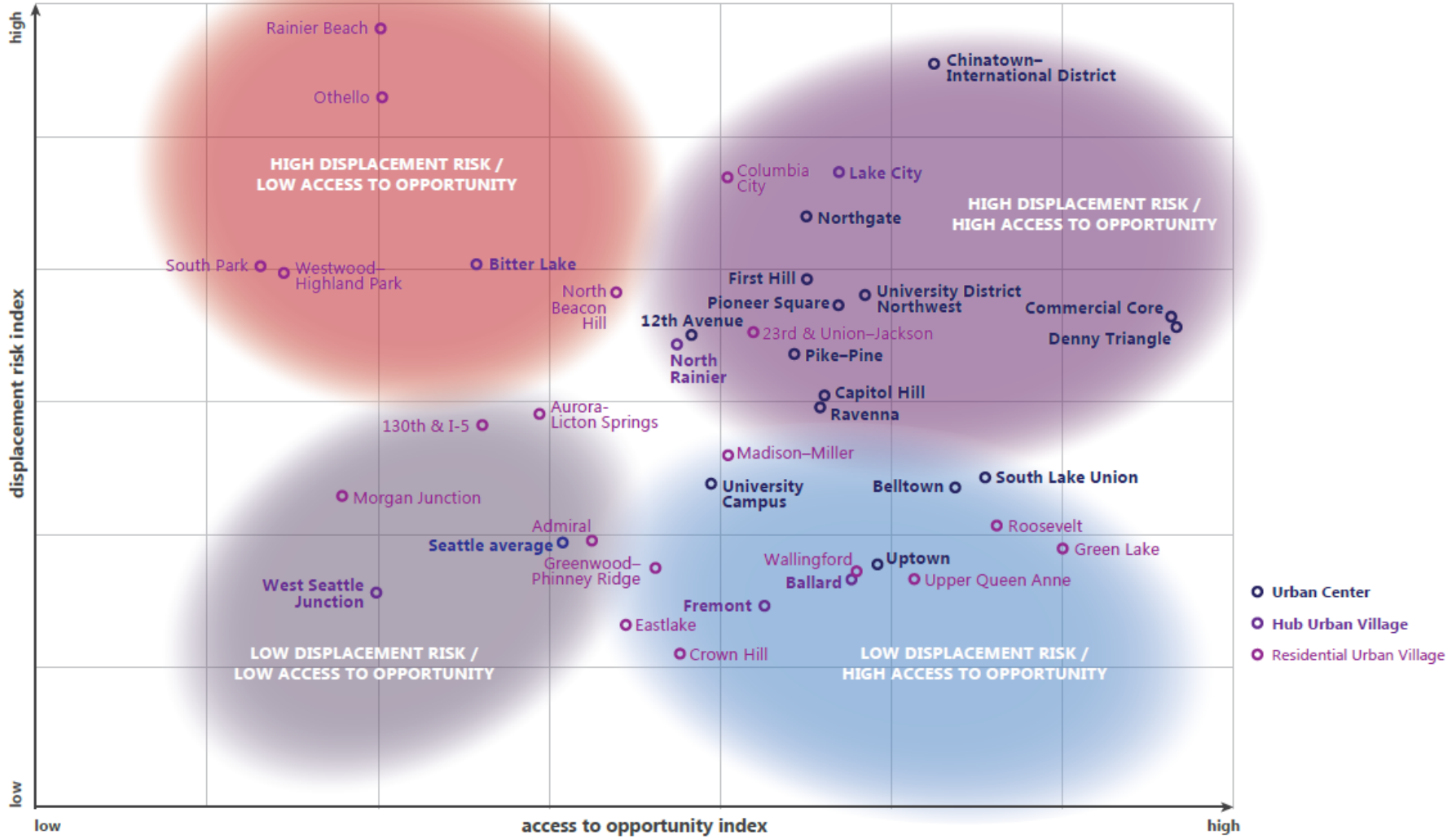
Low

Expanded Urban Village Boundary

Manufacturing & Industrial Center



Equitable Development Typology



Equitable Development Framework: Strong People, Strong Communities

Strategies to achieve community stability and resilience in the face of displacement, and great neighborhoods with access by all:



**Advance economic
mobility and opportunity**



**Promote transportation
and connectivity**



**Prevent residential, commercial
and cultural displacement**



**Develop healthy and safe
neighborhoods**



**Build on local
cultural assets**



**Equitable access to all
neighborhoods**

Findings Across Alternatives

1. Access to opportunity for marginalized populations is unevenly distributed now and will continue to be limited under any alternative.
2. Displacement risk is high now and will continue to be an issue under any alternative.
3. The alternatives differ in the level of growth projected in areas where displacement risk is high.
4. All alternatives present tradeoffs with the equitable development approach.
5. Different alternatives will require different levels of mitigation and public investment to address the important equity issues of displacement and opportunity.