



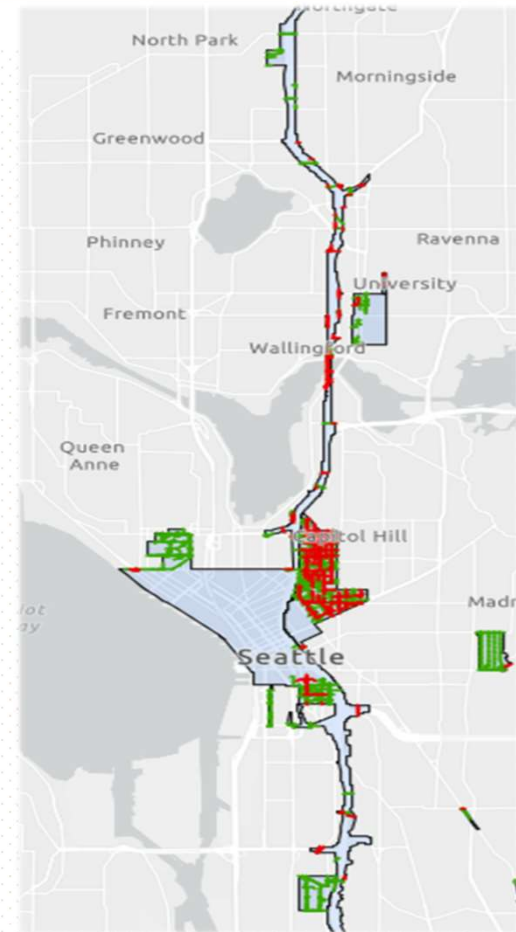
City Light First Hill Underground Ordinance Legislation

Economic Development, Technology & City Light Committee
June 14, 2023

Mandatory Underground Districts (established in 1969)

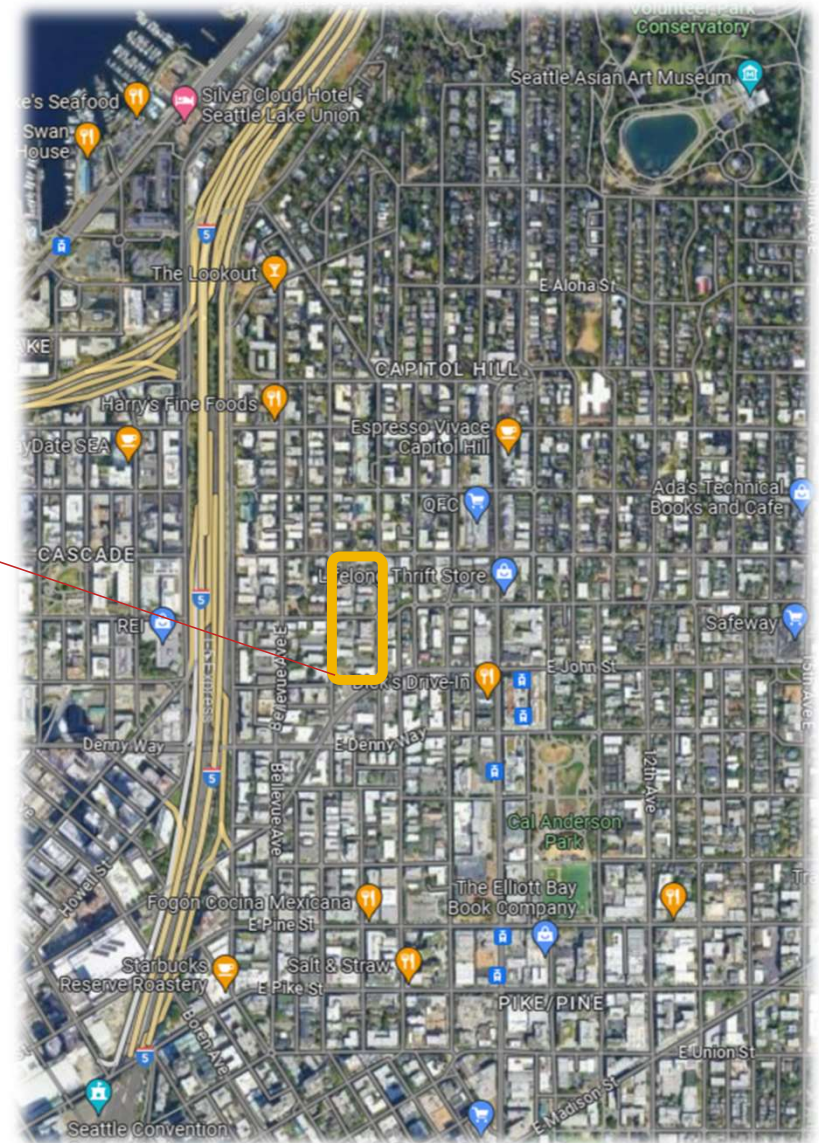
Status of Districts:

- Central Area-University District (mostly complete)
- South Seattle (complete)
- First Hill (only 20% complete)
- Leschi (complete)

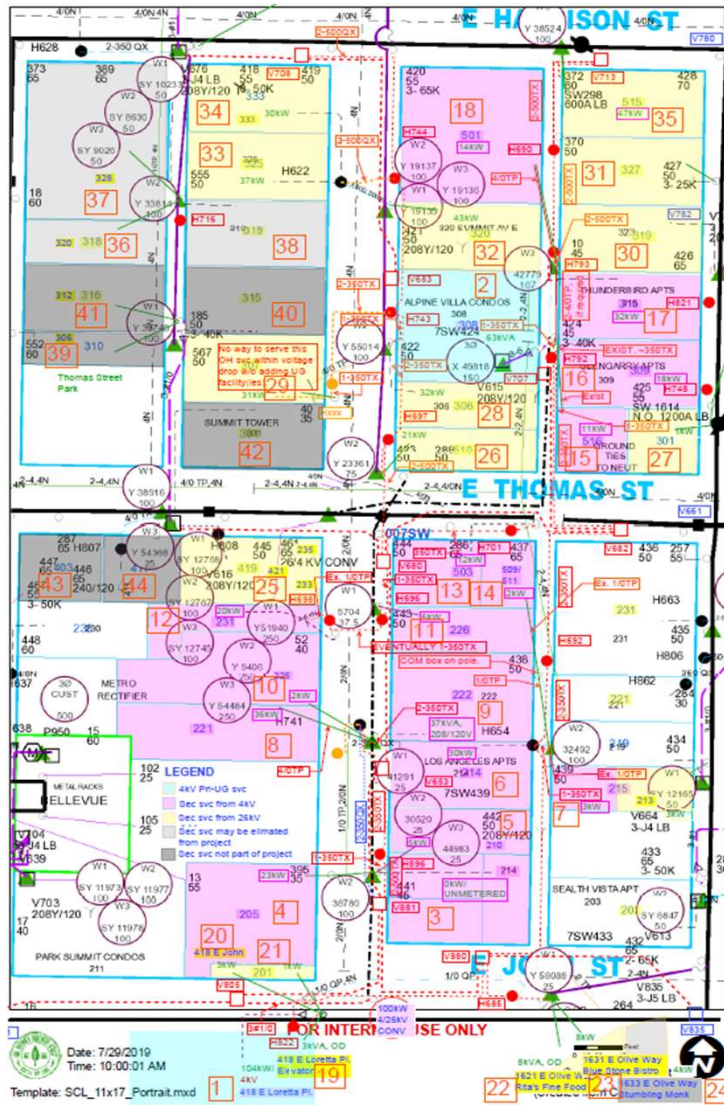


Why Now?

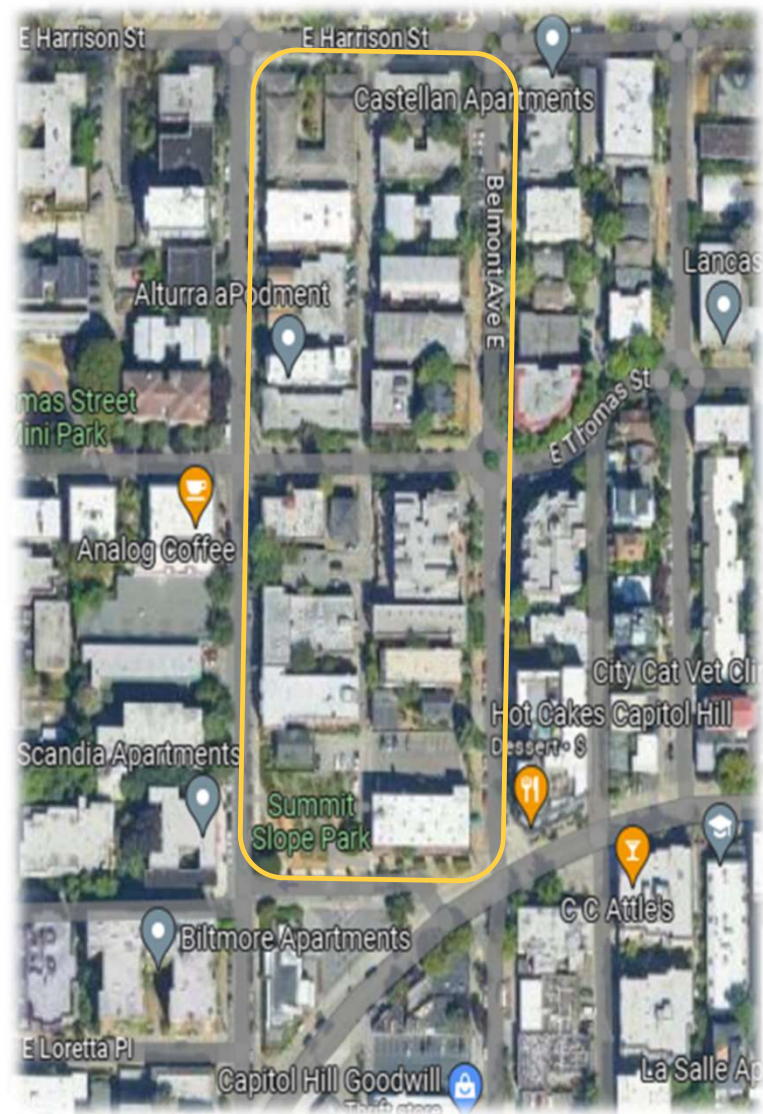
- 4kV cable needs conversion to 26kV
- ~four blocks impacted-between East Harrison Street and East John Street
- ~40 separate service addresses impacted
- ~650 customer accounts impacted



Summit Ave East



Belmont Ave East



Alley



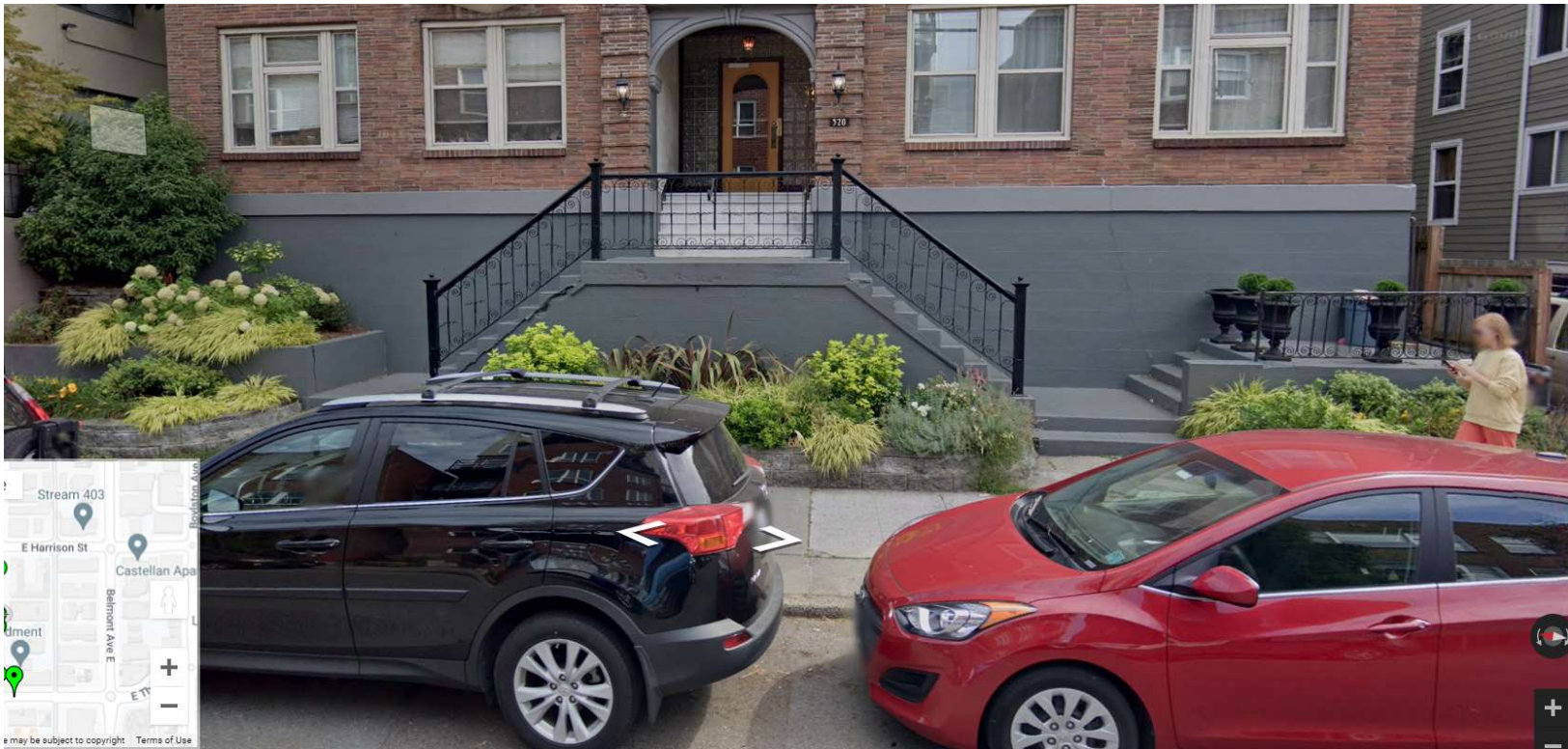
Harrison



Consequences of Mandatory Undergrounding

- District treated differently than other neighborhoods in the City without basis.
- Greater costs passed onto the general ratepayers.
- District customers must, at their expense, trench to underground hand hole electrical box.
- Service drops must move.
- Poles with communication lines and redundant system likely to remain.
- Greater loss of parking and use of streets.

Example on Summit Receiving Overhead 26kV



Ordinance Amends SMC to Allow SCL to

- Assess Overhead Facilities Consistent with Engineering Standards
- Develop Plan Consistent with Engineering Standards
- Discretion to Determine Disposition of Telecommunication Poles
- Lead Coordination with Affected Owners/Operators of Telecommunication Companies
- Set Schedule for Facility Removal and Establish Communications Down to Customers

THANK YOU



Seattle City Light