



# Seattle Transportation Plan

## A Vision for the Future of Transportation in Seattle

# Agenda

- Timeline
- What is the STP
- Engagement update
- What we're hearing
- Next steps



# Timeline

**WE ARE HERE**



# What is the Seattle Transportation Plan?

*The plan will:*

- 1. Collectively reimagine our transportation vision**
- 2. Plan for people first, connecting you to the places that matter most to you**
- 3. Remain grounded in our steadfast values**
- 4. Meet the moment with inclusive engagement**



# Why does Seattle need this plan now?



**To address  
urgent and  
emerging  
challenges**



**To inform  
future  
transportation  
funding**



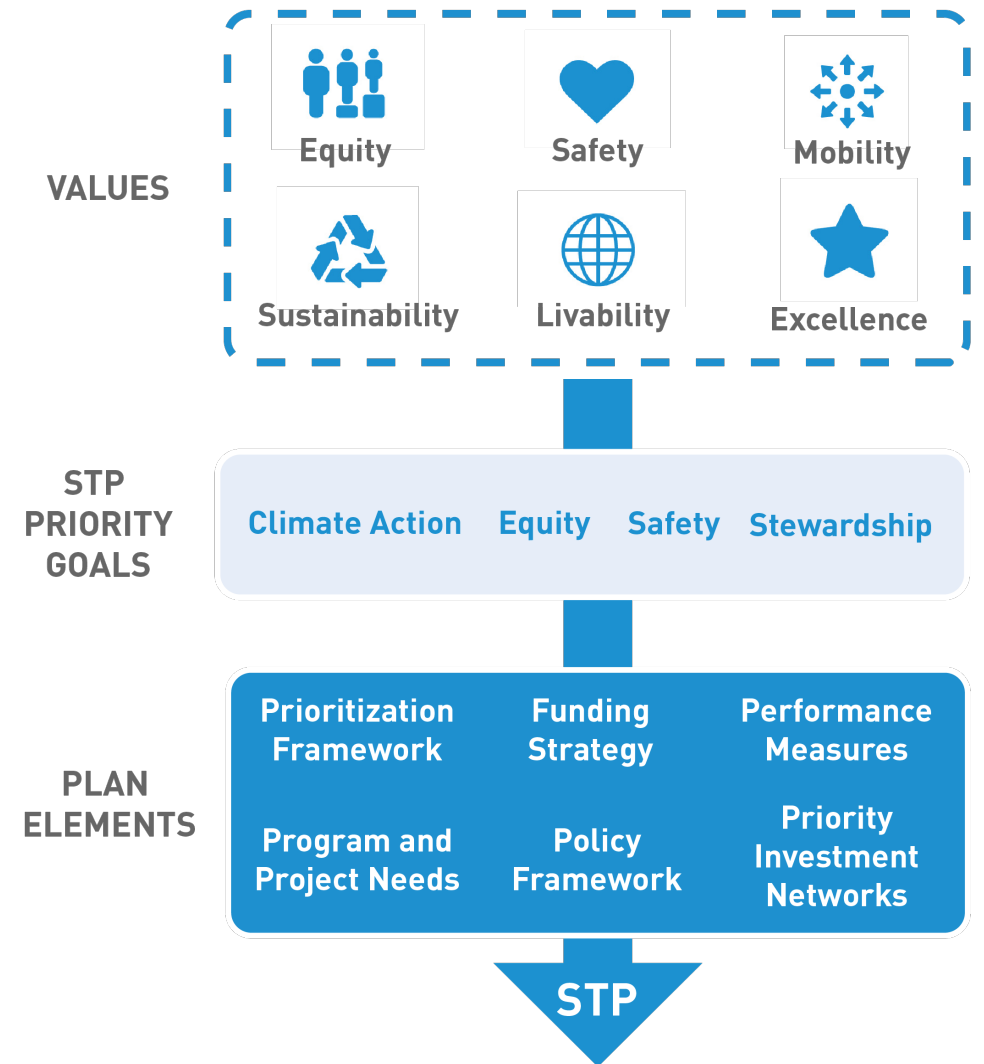
**To align  
with Seattle  
Comprehensive  
Plan Update**



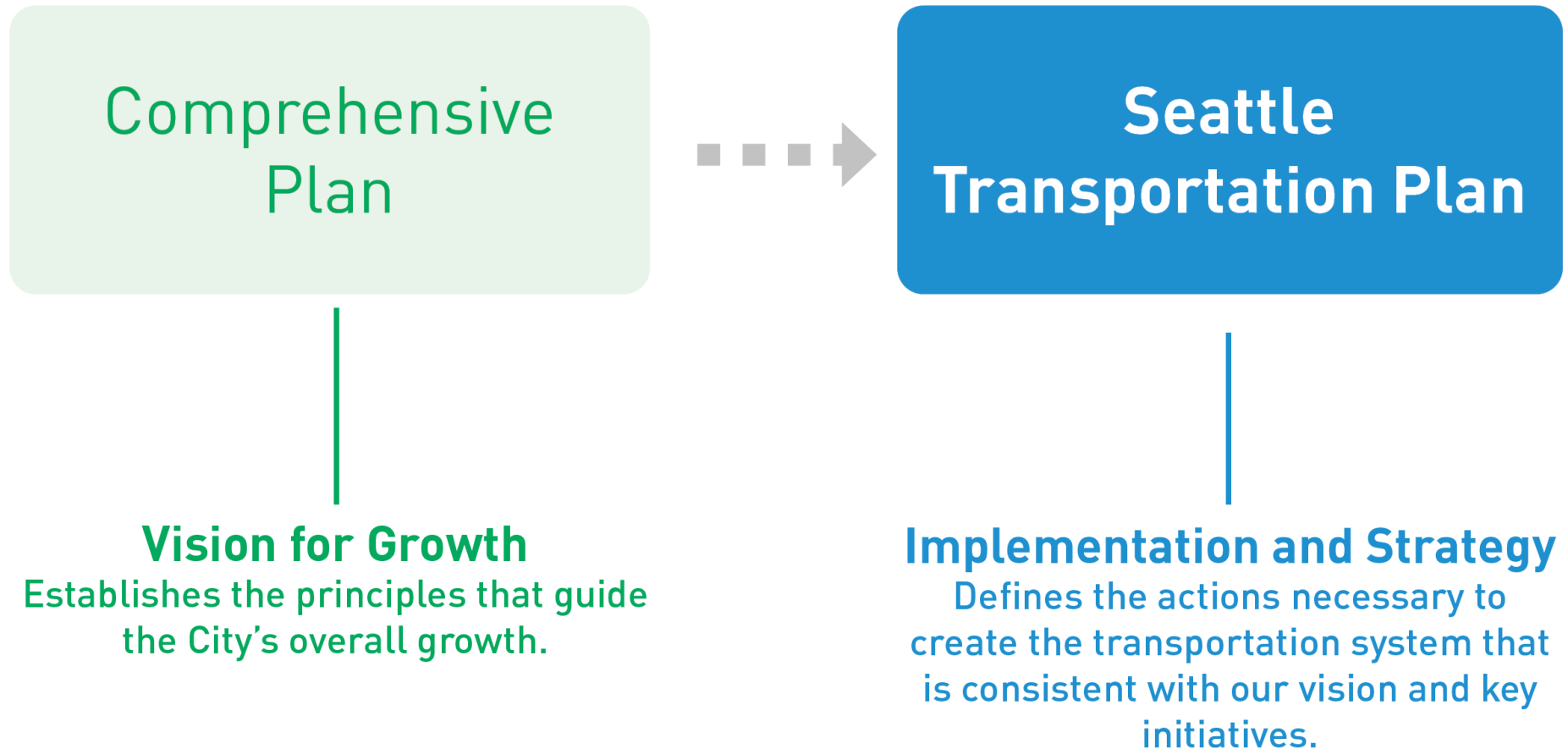
**To plan the limited  
space in our  
right-of-way**  
(streets, sidewalks,  
and other public  
spaces)

# What values drive our transportation vision?

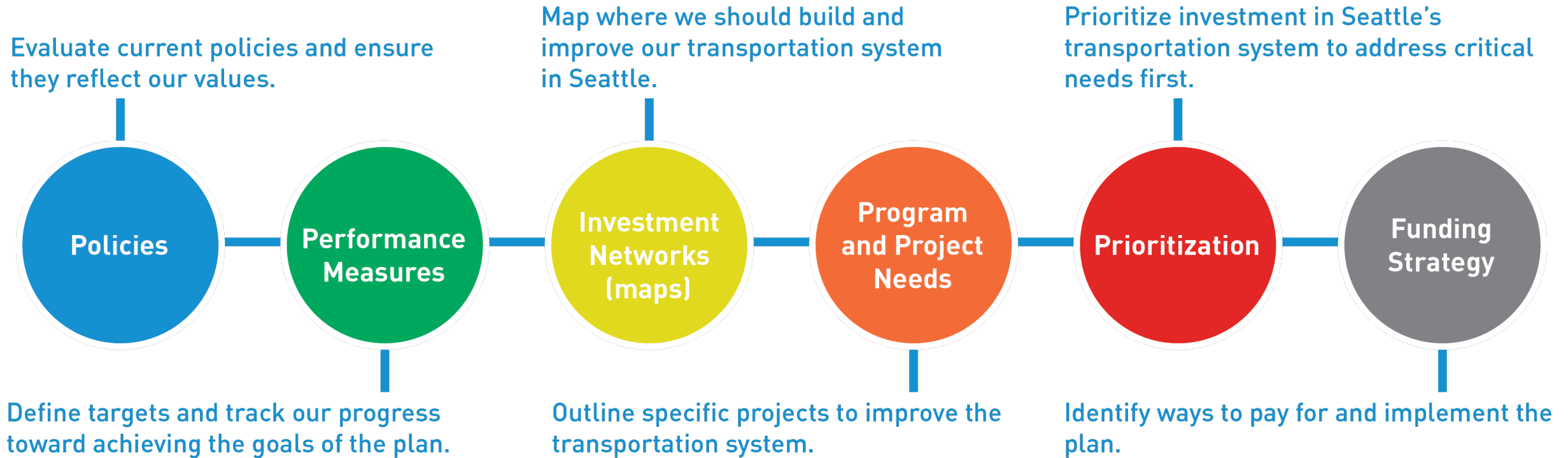
- Our organizational values feed the goals and the technical elements of the STP
- Community engagement informed the STP Priority Goals and will influence all elements of the STP



# How does the STP relate to other plans?



# What will be in the STP?





# Outreach at-a-glance

## Seattle Transportation Plan Engagement



**61K**

Total data points collected (Phases 1 & 2 to date)



**28K+**

Total visits to the STP online engagement hub



**7K+**

Comments placed on the interactive maps



**6K+**

People engaged at outreach events



**9K+**

Responses to surveys



**95**

Social media posts



**68**

Community events



**45**

Meetings and briefings



# Engagement led by community-based organizations

- Asian Pacific American Labor Alliance\*
- Central Area Collaborative
- Duwamish Valley Sustainability Association\*
- Estelita's Library\*
- Khmer Community of Seattle King County\*
- Legacy of Equality Leadership and Organizing
- Smash the Box

\* = also contracted to work with OPCD on the One Seattle Comprehensive Plan



# Engagement led by community-based organizations



Celebration event with Khmer elders and youth



DVSA developed walk in South Park



Smash the Box tableting at community festivals



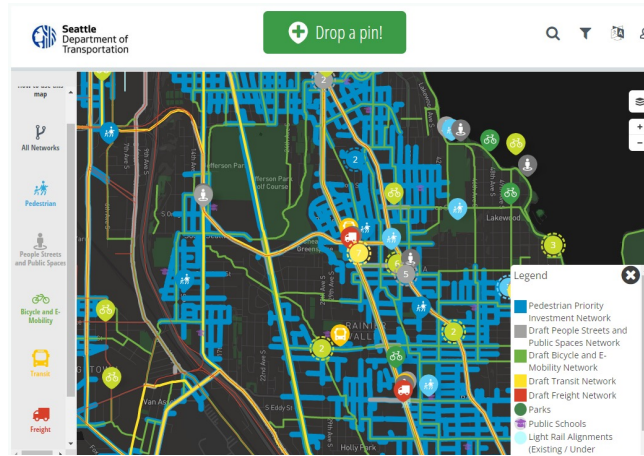
Estelita's Library held events and created an impact report

# Engagement (Phase 2)

## Questions we asked:

- a) Let's create our transportation maps together. Are we on the right track?
- b) Do the Seattle Transportation Plan draft **vision, goals, and objectives** feel right to you?
- c) What **future of transportation** in Seattle do you want to see?
- d) What **actions** should we take to achieve our goals?

## First Draft Transportation Maps



## Menu of Actions



## CONSIDER THESE THREE "FUTURES OF TRANSPORTATION" FOR SEATTLE.

### FUTURE A

*Stay the Course*



- We incrementally change our transportation system
- We make progress towards our goals, but many remain out of reach

**Is this the future you want to see?**

+43 -565

### FUTURE B

*Moderate Pace*



- We accelerate changes to our transportation system
- Some of our goals may be within reach

**Is this the future you want to see?**

+62 -442

### FUTURE C

*Rapid Progress*



- We make transformational changes to our transportation system
- We are best positioned to achieve our goals

**Is this the future you want to see?**

+739 -46

# What we're hearing

**Seattle Transportation Plan**  
A Vision for the Future of Transportation in Seattle

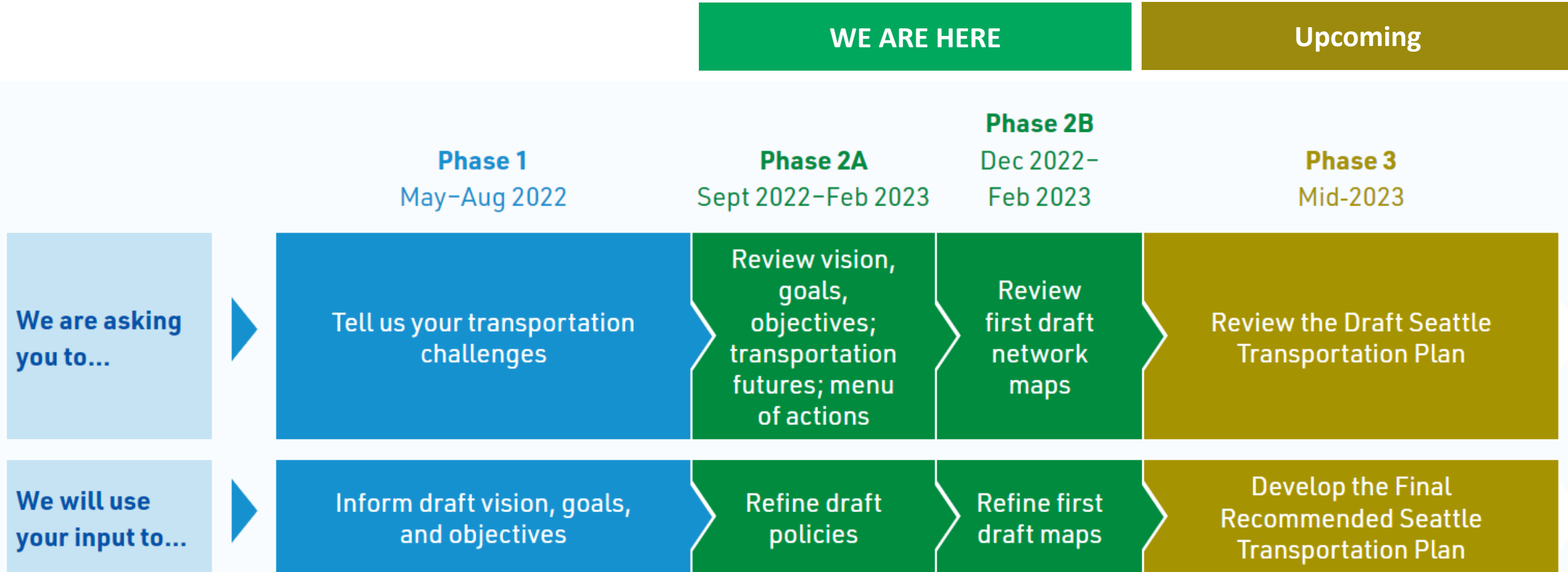


## STP PHASE 1 ENGAGEMENT SUMMARY

September 2022

- 1 There is a need to increase affordable transportation choices and options
- 2 Focus investment in communities which have historically seen less affordable transportation options, but would highly benefit from increased choice in transportation
- 3 Safety is a major concern and is a barrier to achieving equitable transportation
- 4 People want to reallocate street space to repurpose some of our existing traffic lanes into spaces for bikes, transit, sidewalk cafes, etc., while also keeping essential traffic moving
- 5 Maintenance of our existing transportation system is critically important to people
- 6 Improvements are needed to provide better access to transit, and safety is a big concern at transit hubs, stations, and bus stops
- 7 For our BIPOC communities, safety and access to affordable transportation were the most common themes

# Next steps



# How Can I Get Involved?



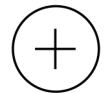
[STP@seattle.gov](mailto:STP@seattle.gov)



[\(206\) 257-2114](tel:(206)257-2114)



<https://seattletransportationplan.infocommunity.org/>

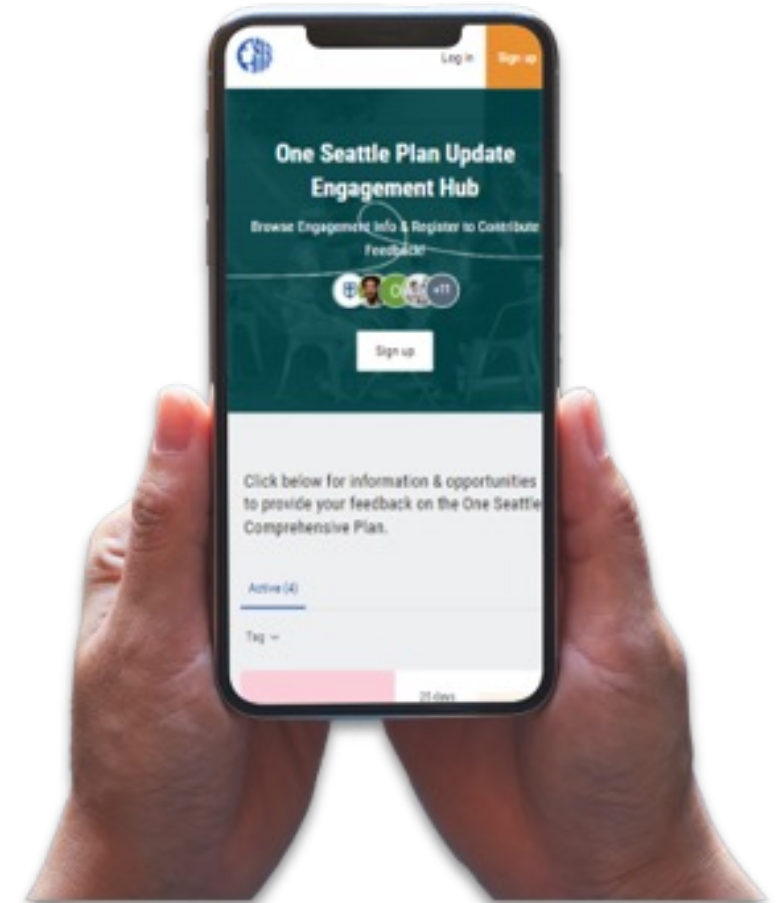


Joanna Valencia and Jonathan Lewis (Project Managers)

Sign up on the website to subscribe for project updates



# Get involved with the One Seattle Comprehensive Plan Update!



 **Seattle**  
Office of Planning &  
Community Development

[engage.oneseattleplan.com](https://engage.oneseattleplan.com)





# Thank you!