

Seattle Parks & Recreation Department Overview

Seattle City Council Parks, Public Utilities and Technology Committee
AP Diaz, Superintendent | March 13, 2024



Seattle
Parks & Recreation

Healthy People, Thriving Environment, Vibrant Community



#SeattleShines

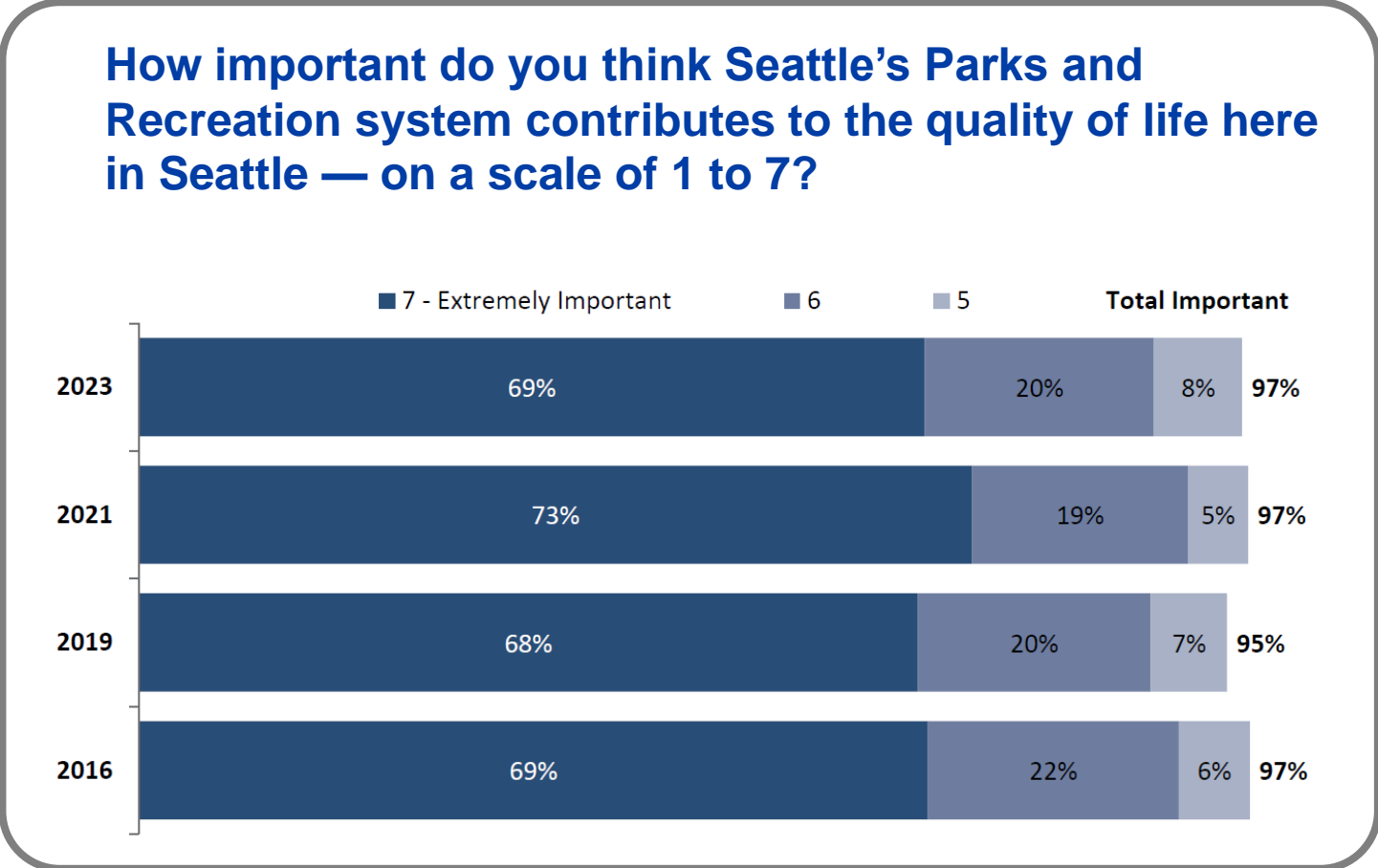


Seattle Residents Value Parks & Recreation!

Seattle Parks and Recreation (SPR) regularly conducts a statistically valid survey of Seattle residents' views on our parks and recreation system.

Key findings from 2023:

- ✓ 97% of residents report that our system is important to Seattle's quality of life
- ✓ 65% of residents gave the system an A or B grade, an increase from 54% in 2021
- ✓ 93% of residents report visiting a park or recreation facility at least twice in 2023, and 73% reported visiting 10 or more times a year.



Today's Presentation

- SPR Mission & Affirmation
- Land Acknowledgment
- System Overview
- RSJI Commitment
- Department Motto
- Leadership and Organization
- Budget and Funding
- What We Do
- Partners



Our Mission

Seattle Parks and Recreation equips employees and the public for well-being as we support healthy people, a thriving environment and vibrant community.

We provide safe and accessible spaces for residents and visitors to work, recreate, rejuvenate and to enhance quality of life and wellness for children, teenagers, adults and seniors.



Organizational Affirmations

Healthy People



Thriving Environment



Vibrant Community



Land Acknowledgment

Seattle Parks and Recreation acknowledges and affirms the indigenous Coast Salish as the original caretakers of our waters and landscape, who nurtured and shaped today's parkland. We honor their legacy with gratitude and appreciation and will safeguard their knowledge and stewardship as enduring treasures to promote community welfare, cultivate inclusive expressions of nature and recreation and commit to land acknowledgment for each ensuing generation.



System Overview

- 6,441-acre park system (12% of city land area)
 - ~ 500 parks and extensive natural areas
 - 99% live within 10-minute walk to park
-
- 207 athletic fields
 - 160 tennis courts
 - 5 dedicated pickle ball courts
 - 151 play areas
 - 120 miles of trails
 - 25 miles of boulevards
 - 25 community centers
 - 9 beaches
 - 8 indoor swimming pools, 2 outdoor pools
 - 4 golf courses
 - 2 environmental education centers
 - 2 boating centers
 - An outdoor stadium
 - Aquarium and the Zoo
 - Washington Park Arboretum
 - Specialty Gardens & Much More!



RSJI Commitment

Race and Social Justice Initiative (RSJI)

SPR embraces the City of Seattle's long-term commitment to end institutional and structural racism and to achieve equity in our programs, projects and community contributions.

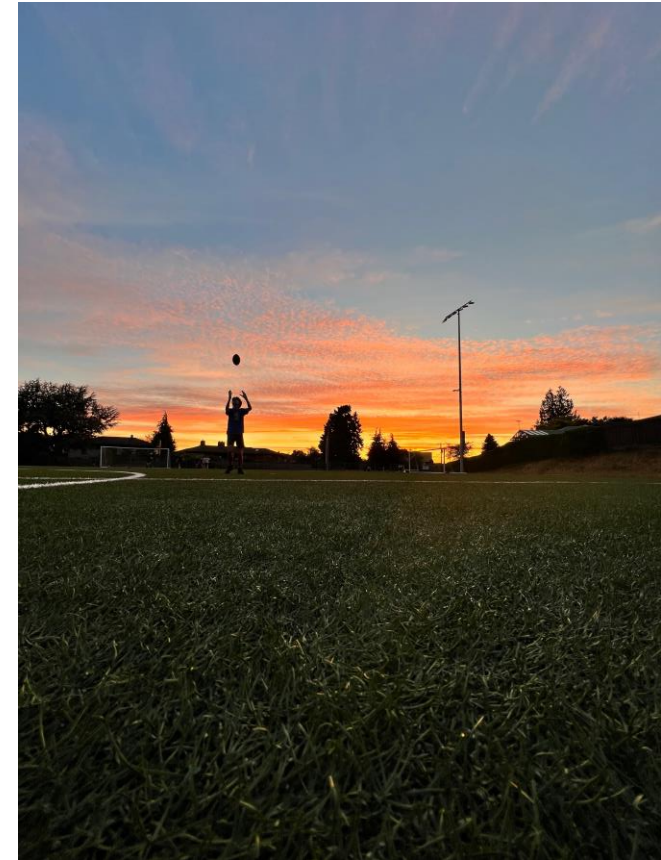
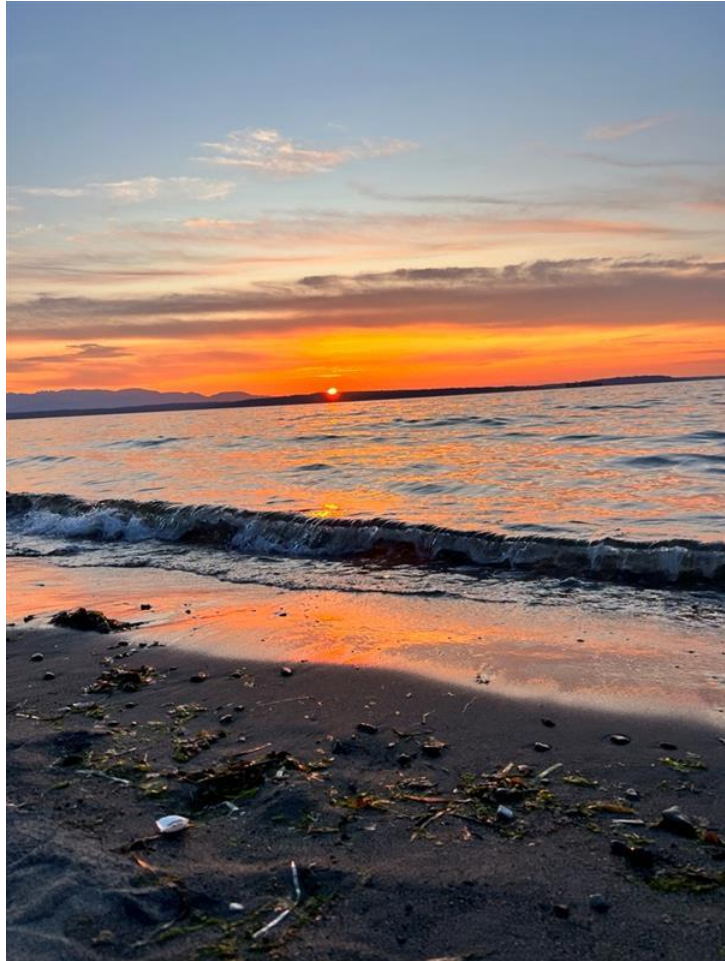


SPR Equity & Inclusion Vision Statement

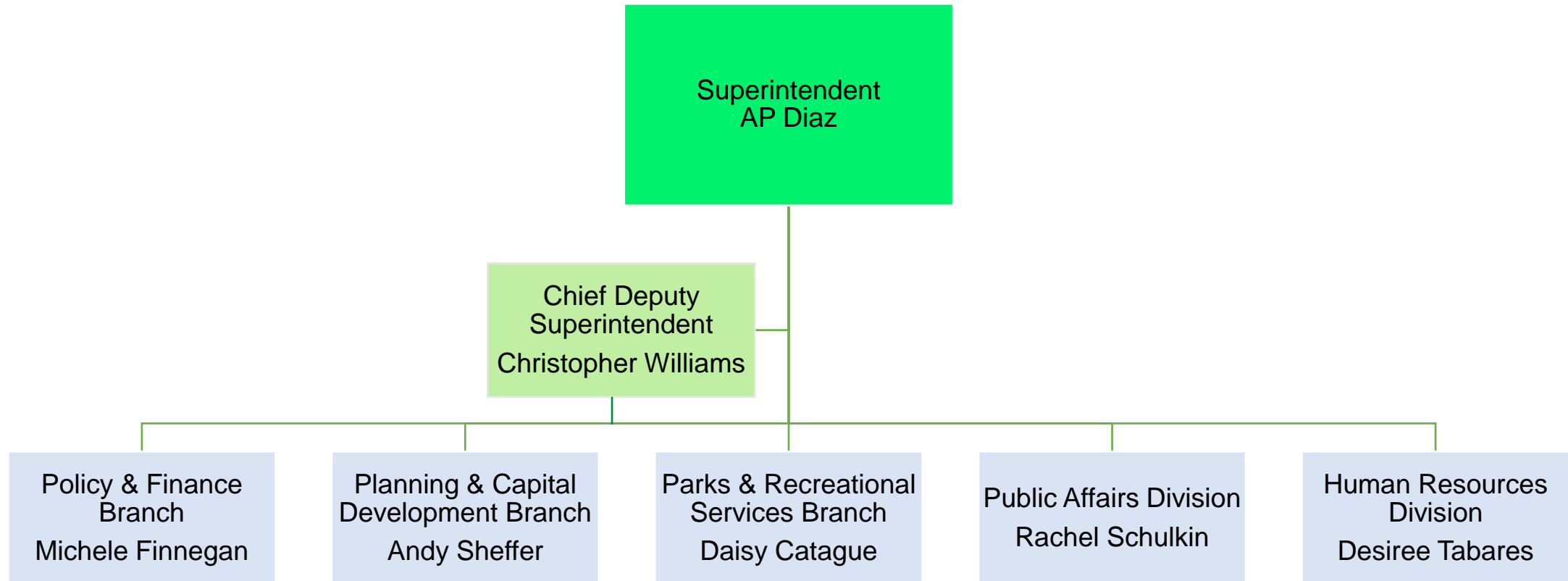
Seattle Parks and Recreation commits to advancing equity and social justice in our department and in every neighborhood by growing a dynamic and diverse workforce, developing strong investments, growth opportunities and beneficial partner strategies as we acknowledge and pledge to close disparities created by historical practices which often hindered workforce development, environmental justice, access to quality open spaces, programs and facilities. [#OneSeattle](#)



Department Motto: **#SeattleShines**

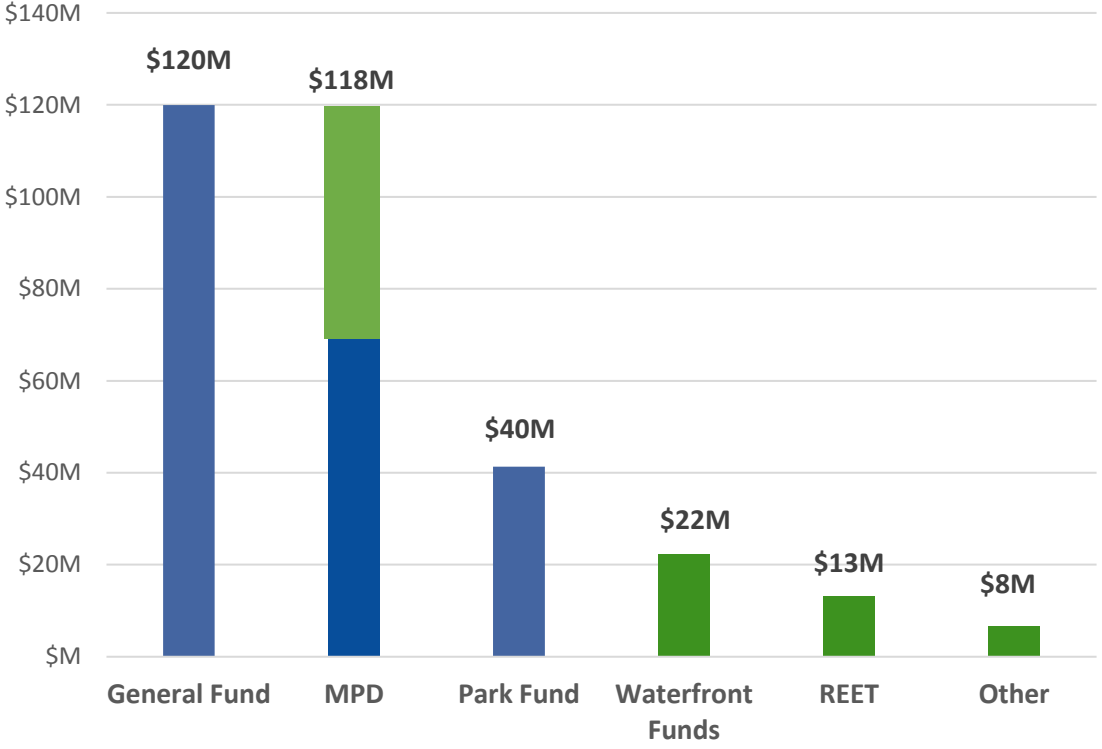


Organization

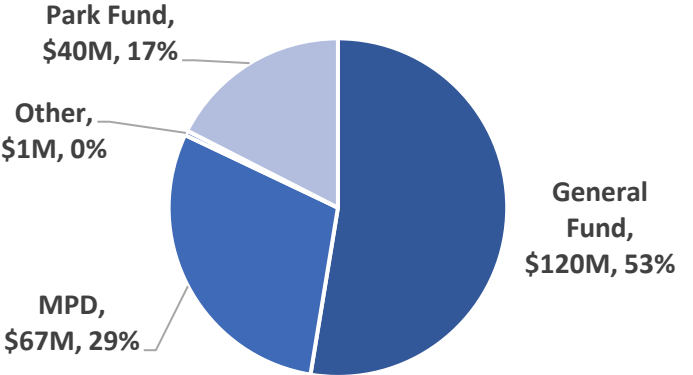


2024 SPR Adopted Budget

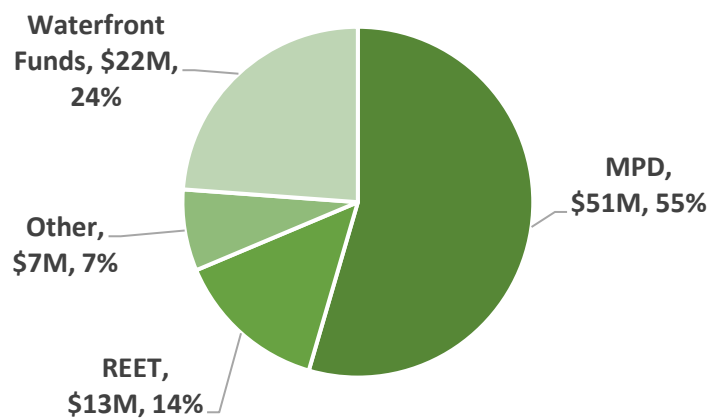
2024 Adopted Budget: \$321M



Adopted Operating Budget: \$227M



Adopted CIP Budget: \$93M



Seattle Park District: Cycle 2 Investment Highlights

Cycle 2 programs under way:

- Making parks safe and welcoming through an expanded **Park Ranger program** and **increased activation** in the center city and neighborhood parks.
- Improving **restroom access and cleanliness** by increased daily maintenance, winterizing to reduce seasonal closures, and increased frequency of major renovations.
- Combating climate change by **decarbonizing facilities** and building a resilient urban forest by **restoring natural areas** and planting more **trees in developed parks**.
- Expanding operating hours at **community centers** and increasing access to culturally relevant health and fitness programs through **community grants**.



Seattle Park District

- The Seattle Park District a.k.a. “the MPD” is a separate jurisdiction that levies property taxes to support parks and recreation services.
- Established in a 2014 vote to provide dedicated, ongoing support for core parks and recreation services.
- Park District funds are woven throughout SPR’s operations and are critical to delivering our services.
- City Council acts as the Park District Board, approving annual budgets and six-year financial plans.
- The first Cycle of funding supported projects and programs from 2015 through 2020.
- In Sept. 2022, City Council (acting as Park District Board) approved the Cycle 2 funding plan (2023-2028).



Parks and Recreational Services: Recreation

We inspire people of all ages and abilities to reach their full potential and stay healthy through recreation programs and activities

- Aquatics, **Swim Seattle**
- Community Centers, Recreation Programming
- School-Age Care & Preschool
- Teen Life Centers & Seattle Mentors
- Mobile Recreation, Arts in Parks, Recreation for All
- Tennis, Pickleball
- Lifelong Recreation
- Specialized Programs
- Environmental Education
- **Community Services:**
 - Emergency Operations
 - Park Rangers
 - Park Activation



Parks and Recreational Services: Recreation

Something for Everyone!



Parks and Recreational Services: Parks & Environment

We ensure parks, natural areas & public spaces are safe, clean and inviting

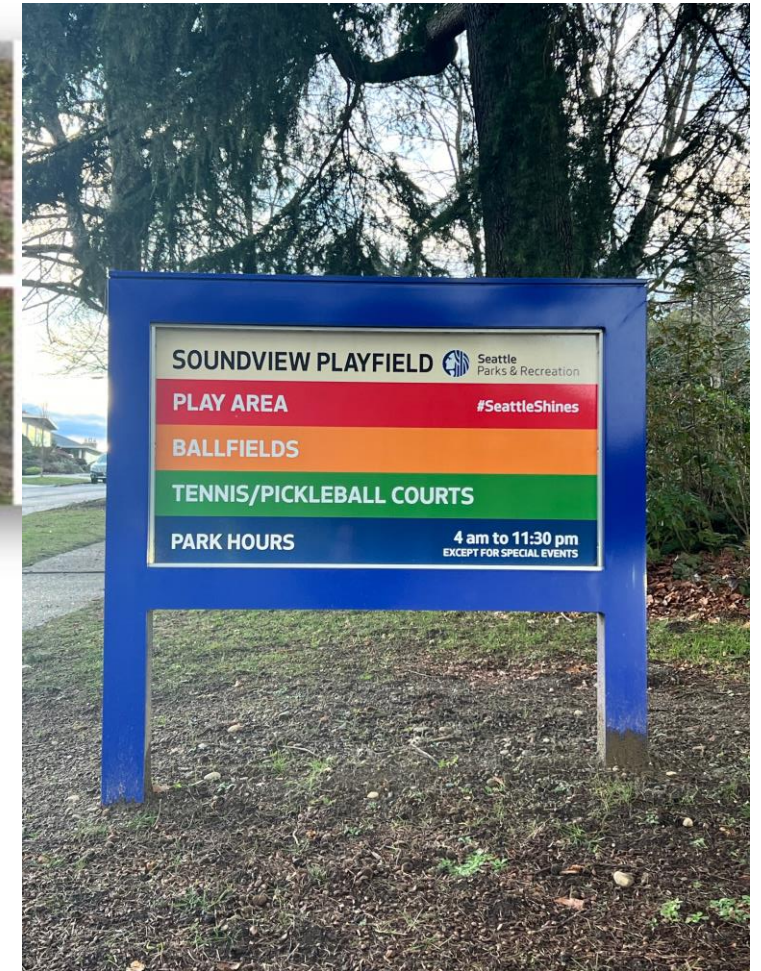
- Grounds Maintenance
- Natural Resources
- Urban Forestry
- Horticulture: Annuals, Perennials
- Specialty Gardens: Arboretum, Japanese Garden, Kubota Garden, Landscape Restoration



Parks & Recreational Services: Facilities

We enhance safety and maintain and improve valuable park assets throughout the system

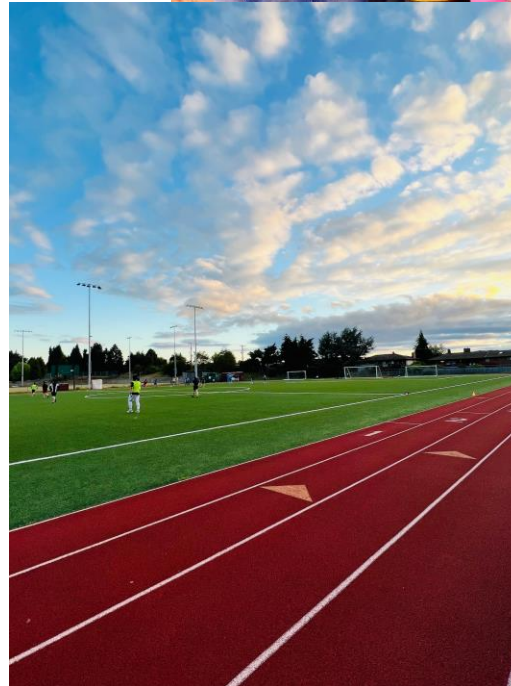
- Skilled Trades
 - Carpenters
 - Electricians
 - Plumbers
 - Painters
 - Others
- Custodial Services
- Graffiti Removal



Planning & Capital Development (PCD)

Our capital projects enhance park land, facilities, and support Seattle communities through safe, accessible and well-designed spaces

- Strategic Planning
- Asset Management
- Engineering & Design
- Project Management
- Environmental Compliance
- Grant Administration
- Equity Fund
- Seattle Conservation Corps
- Golf Management



Completed Community Projects



Dearborn Park Play Area



I-90 – Judkins Lighting and Staircase



Dr. Blanche Lavizzo Play Area



More Capital Projects



Montlake Community Center Playfield - completed



Pathways Park –
under construction



Green Lake Small Craft Center –
under construction



Urban Triangle Park Play Area - under construction



Partners Help Ensure Success for All!



- Associated Recreation Council (ARC)
- Board of Parks and Recreation Commissioners
- Seattle Parks Foundation
- City Dept. of Education & Early Learning
- Seattle Public Library
- MOHAI
- Downtown Seattle Association
- Woodland Park Zoo
- Seattle Aquarium
- Tribal Partners
- Green Seattle Partnership
- Seattle Public Schools
- 60+ Friends Groups
- Over 31,000 volunteers



Questions?

For more information

www.seattle.gov/parks



Seattle
Parks & Recreation

Healthy People, Thriving Environment, Vibrant Community