

New Levy Programs

Neighborhood-Initiated Safety Partnership Program

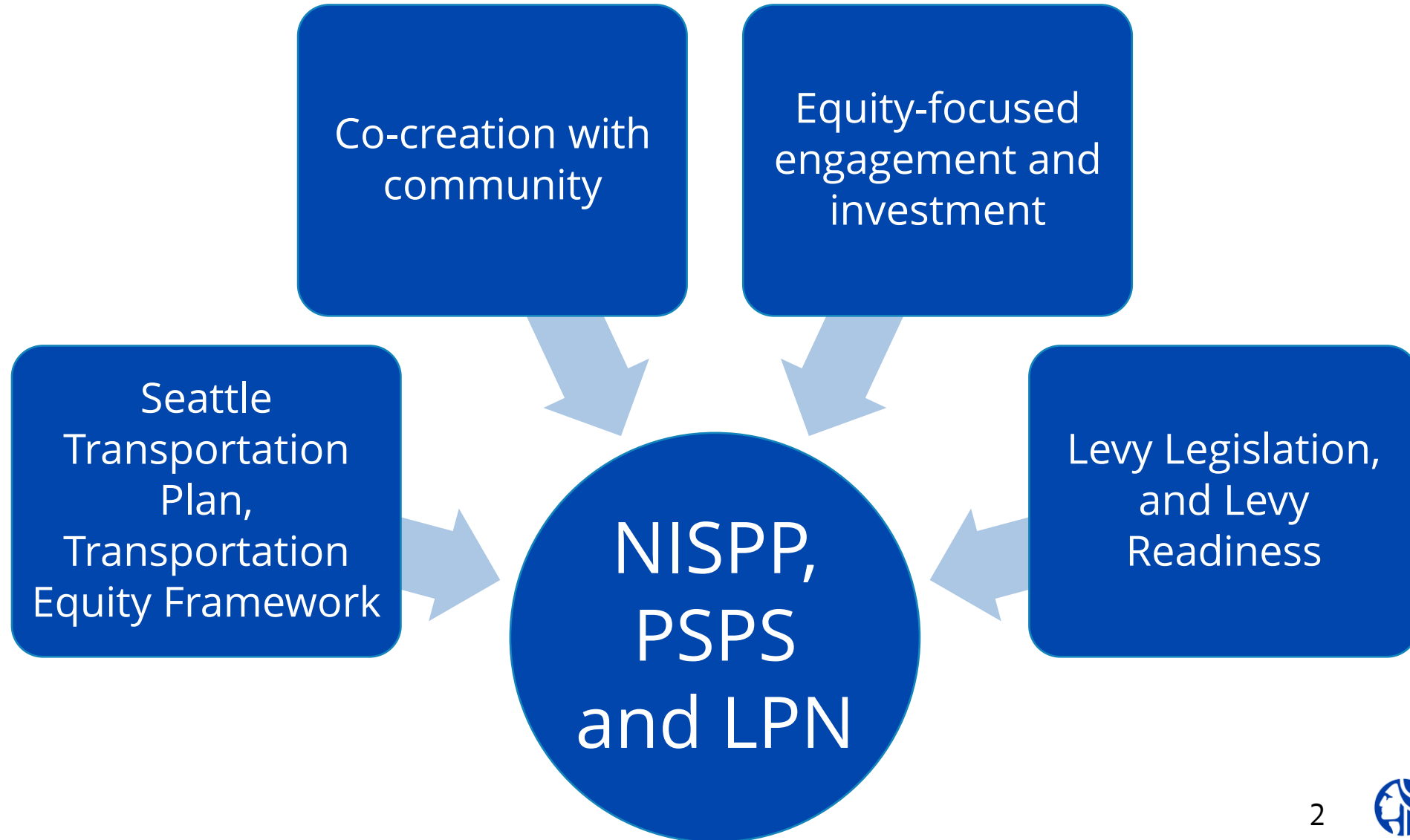
People Streets and Public Spaces

Low-Pollution Neighborhoods

STEPS Committee, March 19, 2026



Community-Centric Levy Programs



Neighborhood- Initiated Safety Partnership Program (NISPP)



Neighborhood-Initiated Safety Partnership Program

- **Levy Funding:** \$39.5M
- **Estimated Investments:** Build at least 10 neighborhood initiated and co-created projects, focusing on community priorities across all districts with an emphasis on equity. This could include safety and mobility enhancements like new sidewalks, crossings and transit access.



Program Overview

NISPP serves as an evolution of the Neighborhood Street Fund:

- Building important transportation safety improvements
- Responding to community requests that may not otherwise be prioritized by other SDOT programs

We are shifting away from a citywide application-based model to a placed-based partnership model:

- Focusing in high-need neighborhoods based on safety and equity
- Working with other SDOT projects and reviewing existing feedback to minimize the need for community to ask for improvements multiple times
- Partnering with community groups to host in-person, in-language conversations to see issues first-hand



Current Work

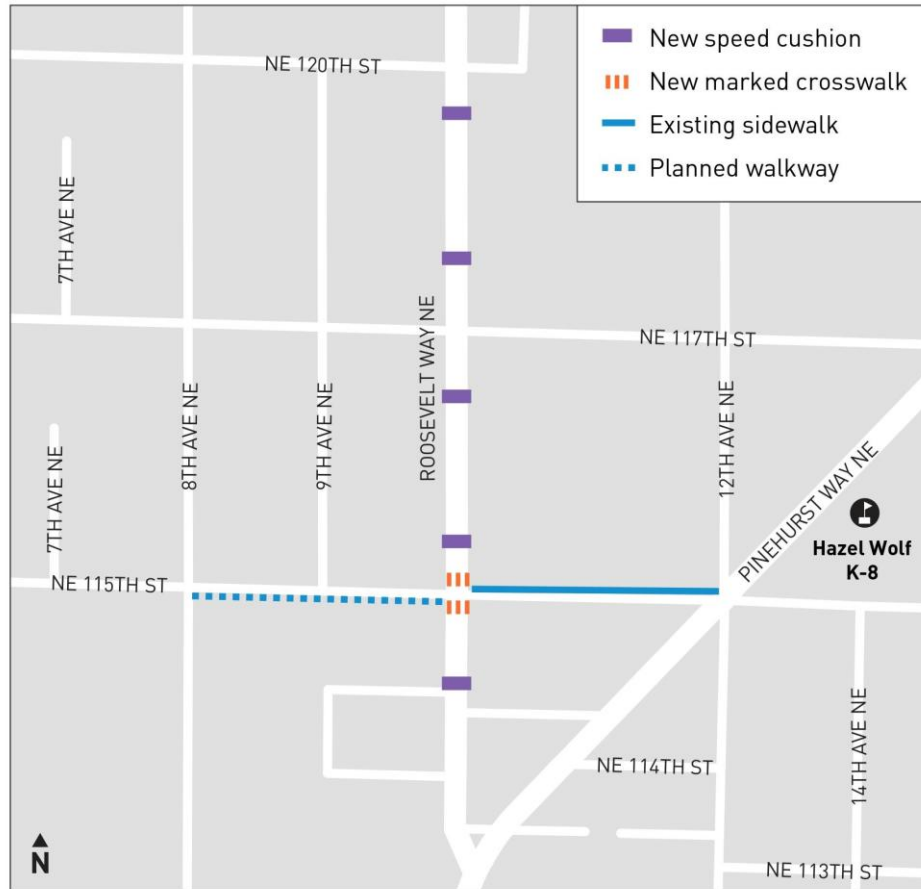
NISPP partnered with our New Sidewalk program to be responsive to community early in the Levy.

- In 2025, we hosted 9 community “walkshops” in neighborhoods with many missing sidewalks.
- Listened to ideas for new sidewalks and other safety improvements such as traffic calming and new crosswalks.
- We also reviewed community feedback received during the Seattle Transportation Plan and other recent outreach efforts.

We selected 19 projects across 12 neighborhoods that will be built in 2026-2027, many of which will complement new sidewalks.



Early Project Highlights



Pinehurst: Traffic Calming and new crosswalks connecting to a new walkway and improving safety for Hazel Wolf K-8 students (Community idea from the Pinehurst walkshop)



Rainier Vista: Traffic Calming, new crosswalks, and pedestrian islands to reduce cut through traffic and improve safety for SHA residents. (Community idea from the Mt. Baker Home Zone plan)

Next Steps

- Design and build early projects in 2026-2027
- Work with other SDOT programs and outreach efforts to identify partnership opportunities and future community projects



People Streets and Public Spaces (PSPS)





People Streets Capital Program

The People Streets Capital Program is a new Levy-funded program

- **Levy Funding:** \$39M
- **Objective:** Co-create and implement People Street Projects to activate business districts and create vibrant community spaces
- **Estimated Investments:** Implement 5 projects listed in the levy and additional People Street and Public Space projects identified with community over the life of the levy

8 People Streets & Public Spaces

Levy Investment: \$66.5M | Expected Additional Leverage: \$14M – \$17M

Activate public spaces and improve lighting in partnership with business districts and community organizations so people can enjoy unique and vibrant neighborhoods and business districts.

People Streets Capital Projects (\$39M)

- Design, implement, and co-create People Street Projects to activate business districts and community spaces, with a focus on high equity priority areas. Improvements could include redesigned streets, seating, wayfinding, lighting, and activation. Anticipated initial projects include:
 - » S Henderson St
 - » Occidental Promenade
 - » Chinatown/International District Alley Activation
 - » E Union St Revival Corridor
 - » NE 42nd St Green Street Improvements
 - » Additional projects identified with business districts and community organizations

Downtown Activation (\$15M)

- Invest in near-term maintenance and placemaking improvements, construction coordination, and advancement of a longer-term vision for 3rd Ave.

Lid I-5 Private Funding Study (\$0.5M)

- Explore the feasibility of private funding strategies for lidding Interstate 5 between NE 45th St and NE 65th St and around the NE 130th St Link light rail station.

People Streets and Wayfinding Maintenance (\$2M)

- Provide maintenance for existing activation projects and the citywide wayfinding system.

Pedestrian Lighting (\$10M)

- Install pedestrian lighting leading to transit stops.

People Streets Project Types

- **Levy Identified Projects:** Transformative projects identified in the levy
- **Complete Streets Contributions:** Inclusion of public realm improvements into paving projects
- **Spot & Partnership Projects:** Permanent improvements identified through community conversations
- **Tactical Projects:** Community co-created pedestrianized streets and plazas



Fortson Square Redesign, Pioneer Square
In Construction

2026 Workplan

Levy Identified Projects

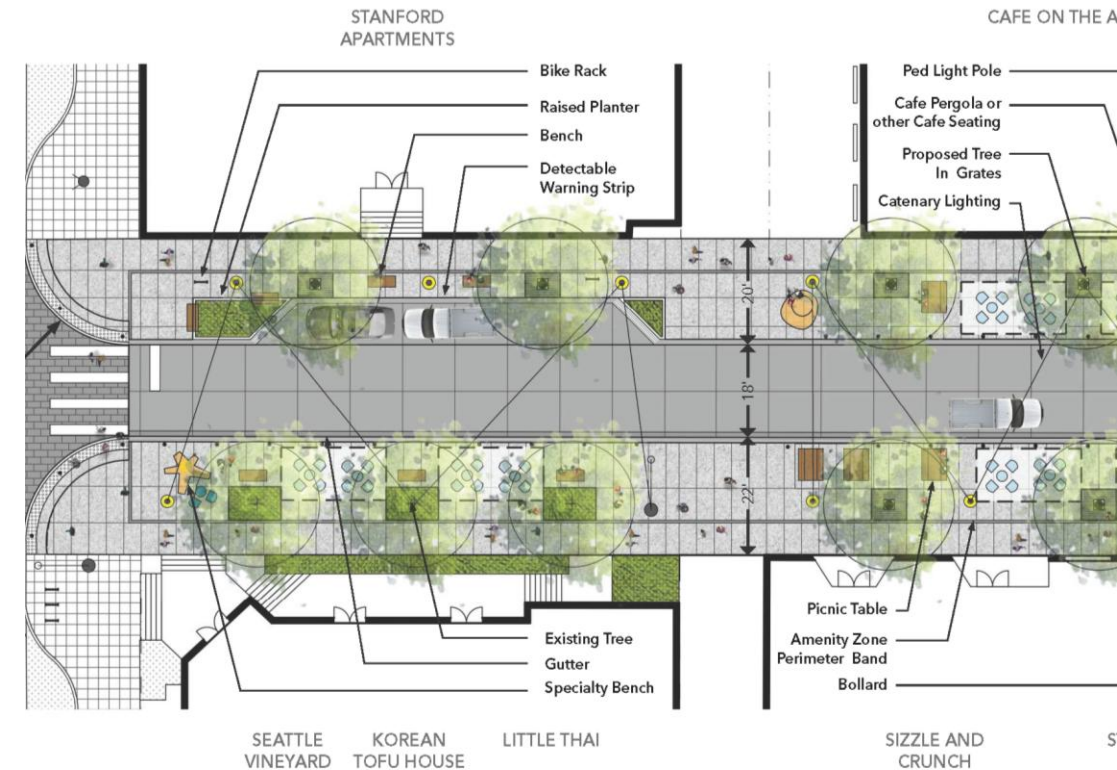
- Occidental Promenade (near-term improvements)
- CID Alley Activation (30% design)
- NE 42nd St (30% design)
- S Henderson St (10% design)
- Union St Revival Corridor (scoping)

Spot & Partnership Projects

- Fortson Square (construction)
- U District spot improvements (scoping)
- 15th Ave S and S Columbian Way Plaza (design)

Tactical Projects (design)

- SW Lander St
- 18th Ave SW
- W Crockett St



NE 42nd St, U District
Concept Design

PSPS Next Steps

- **Advance design** for levy identified projects and Tactical, Spot, and Partnership projects to be delivered in 2027
- Publicly launch the **Tactical and Spot Project Initiative** to inform future year workplans



Portal Porch, Belltown
Completed project

Low-Pollution Neighborhoods (LPN)

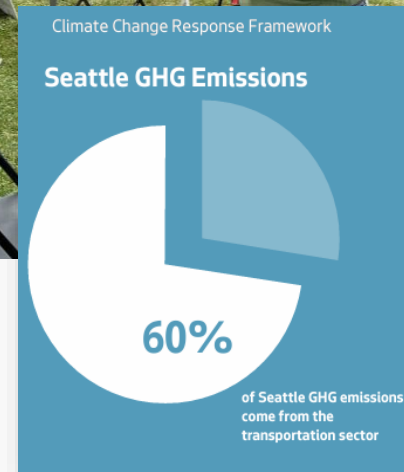


Low-Pollution Neighborhoods

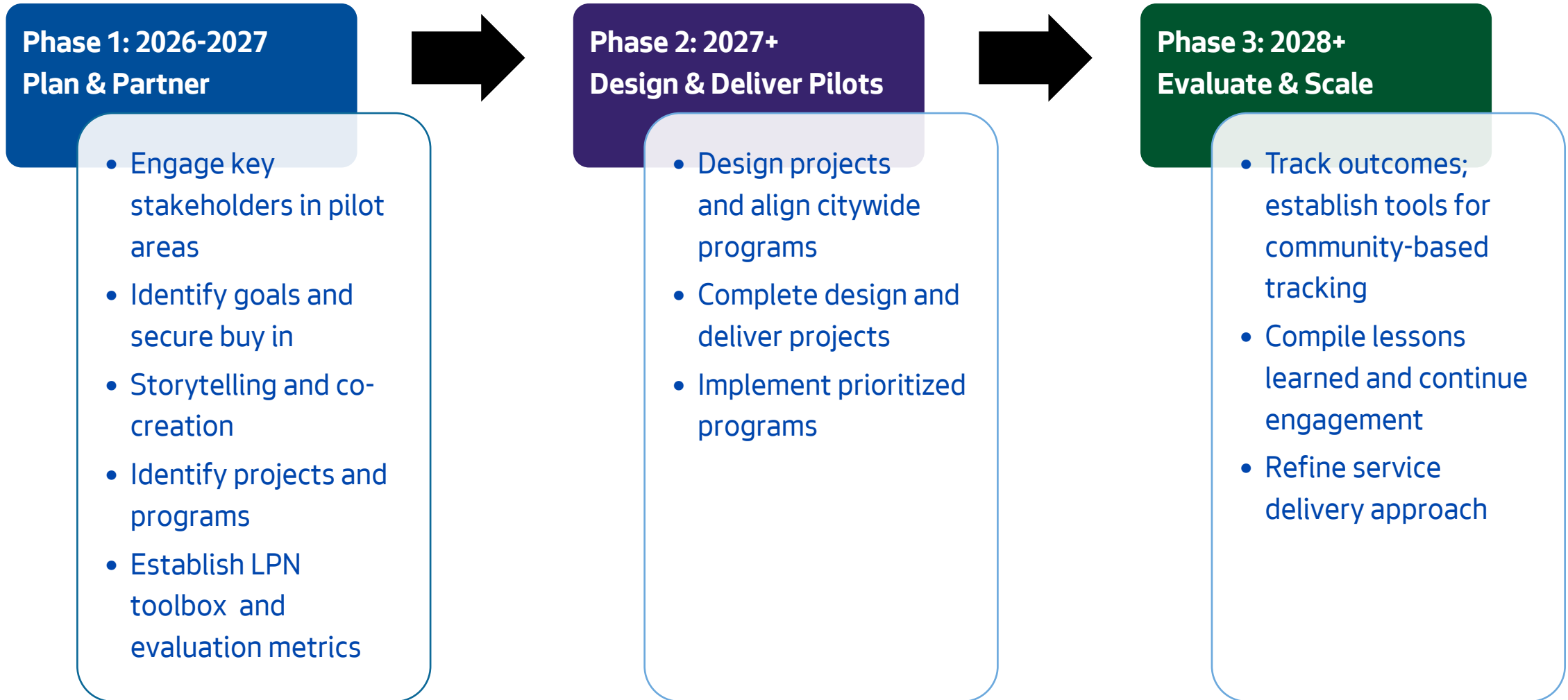
Challenge: Transportation emissions, uneven impacts, fragmented program

LPN Approach

- Coordinate departments around shared neighborhood priorities to reduce pollution and build resilience
- Develop solutions in partnership with communities
- Use a toolbox of policies, programs, incentives, and projects to scale impact



Planning & Project Timeline



Develop a Program Toolbox

Menu of existing and new programs, project types, and best practices to inform and advance LPN community priorities

- Street & Mobility Tools
- Public Realm, Pedestrianization, & Greening
- Tactical/ Quick-Build Actions
- Activations & Programming
- Partnerships & Engagement
- Program Delivery & Coordination
- Data, Metrics & Learning



Low Pollution Neighborhood Pilots

South Park & Georgetown

- High pollution burden
- Freight/industry along residential edge
- Pedestrian and bike safety
- Heat and flooding risk
- Strong environmental justice advocacy



Lake City

- Diverse, growing
- High transit use
- Heat and stormwater risks
- Strong environmental justice advocacy



Capitol Hill

- Dense, transit-rich
- Freight delivery complexity
- Pedestrian and bike safety
- Strong environmental justice advocacy



LPN Next Steps

- **Kick off LPN planning** in pilot areas
- Begin **neighborhood assessments** in three pilot areas
- Coordinate **early engagement** with community partners
- Identify and **organize existing City tools, programs, and projects**
- **Advance design** of LPN strategies for each pilot neighborhood



Questions?