

CITY OF SEATTLE
ORDINANCE 126186
COUNCIL BILL 119838

AN ORDINANCE relating to land use and zoning; amending the Seattle Comprehensive Plan to incorporate changes proposed as part of the 2019-2020 Comprehensive Plan annual amendment process.

WHEREAS, The City of Seattle adopted a Comprehensive Plan through Ordinance 117221 in 1994 and most recently adopted amendments to its Comprehensive Plan in March 2019 through Ordinance 125790; and

WHEREAS, the Growth Management Act, chapter 36.70A RCW, authorizes annual amendments to the City’s Comprehensive Plan; and

WHEREAS, the adopted procedures in Resolution 31807 provide the process for interested citizens to propose annual Comprehensive Plan amendments for consideration by the City Council; and

WHEREAS, various parties proposed amendments for consideration during the 2019-2020 annual amendment process; and

WHEREAS, on August 12, 2019, the City Council considered these proposed Comprehensive Plan amendments and adopted Resolution 31896, directing that City staff further review and analyze certain proposed amendments; and

WHEREAS, these proposed amendments have been reviewed and analyzed by the Office of Planning and Community Development and considered by the Council; and

WHEREAS, the City has provided for public participation in the development and review of these proposed amendments and other changes to comply with the Growth Management

1 Act, including requirements for early and continuous public participation in the
2 development and amendment of the City’s Comprehensive Plan; and

3 WHEREAS, the Council has reviewed and considered the Executive’s report and
4 recommendations, public testimony made at the public hearings, and other pertinent
5 material regarding all the proposed amendments; and

6 WHEREAS, the Council finds that these amendments to the Comprehensive Plan are consistent
7 with the Growth Management Act, and will protect and promote the health, safety, and
8 welfare of the general public; NOW, THEREFORE,

9 **BE IT ORDAINED BY THE CITY OF SEATTLE AS FOLLOWS:**

10 Section 1. The Seattle Comprehensive Plan, last amended by Ordinance 125790, is
11 amended as follows:

12 A. Amendments to the boundaries of the West Seattle Junction Hub Urban Village on the
13 Future Land Use Map, Growth Strategy Figure 4, and the maps on pages 12 and 407 of the
14 Comprehensive Plan, as shown on Maps A, B, C, D, E, F, G and H in Attachment 1 to this
15 ordinance.

16 B. Amendments to the Neighborhood Plan Element of the Comprehensive Plan, as shown
17 in Attachment 2 to this ordinance.

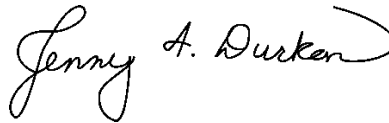
1 Section 2. This ordinance shall take effect and be in force 30 days after its approval by
2 the Mayor, but if not approved and returned by the Mayor within ten days after presentation, it
3 shall take effect as provided by Seattle Municipal Code Section 1.04.020.

4 Passed by the City Council the 29th day of September, 2020,
5 and signed by me in open session in authentication of its passage this 29th day of
6 September, 2020.



7 _____
8 President _____ of the City Council

9 Approved by me this 2nd day of October, 2020.



10 _____
11 Jenny A. Durkan, Mayor

12 Filed by me this 2nd day of October, 2020.



13 _____
14 Monica Martinez Simmons, City Clerk

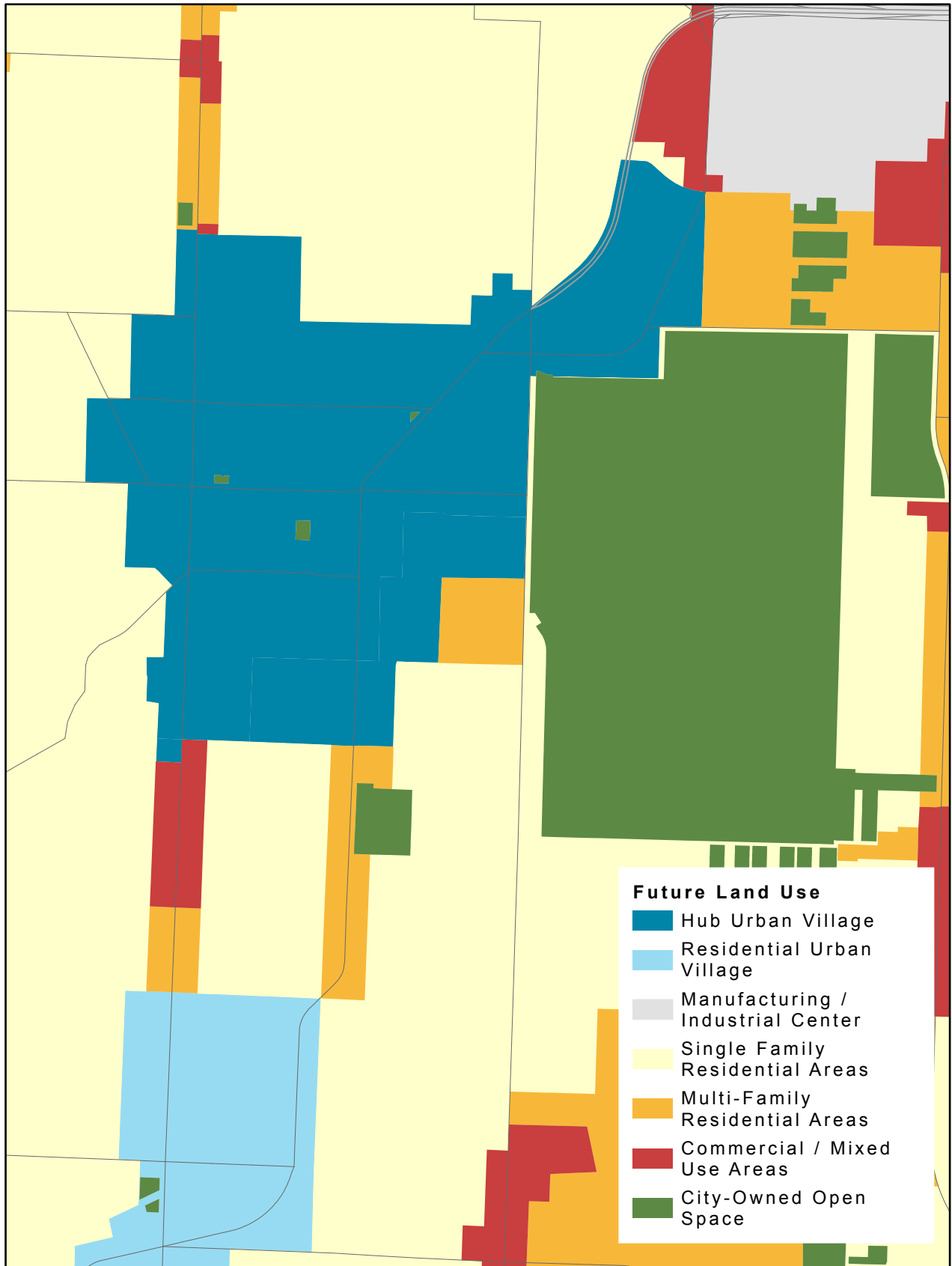
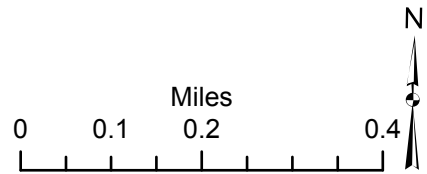
15 (Seal)

16 Attachments:

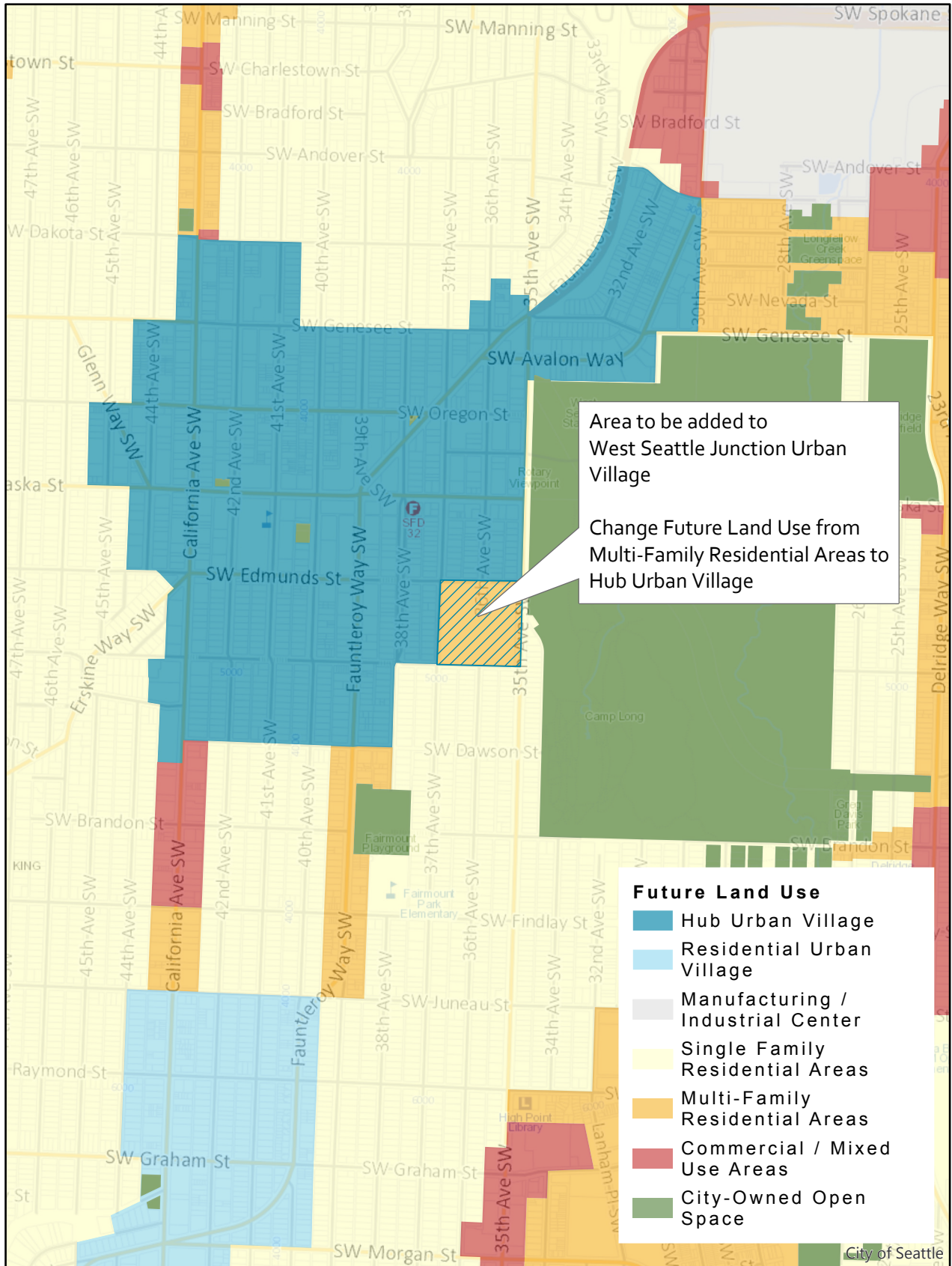
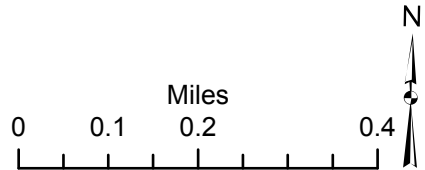
17 Attachment 1 – West Seattle Future Land Use Map Amendments

18 Attachment 2 – Delridge Neighborhood Plan Amendments

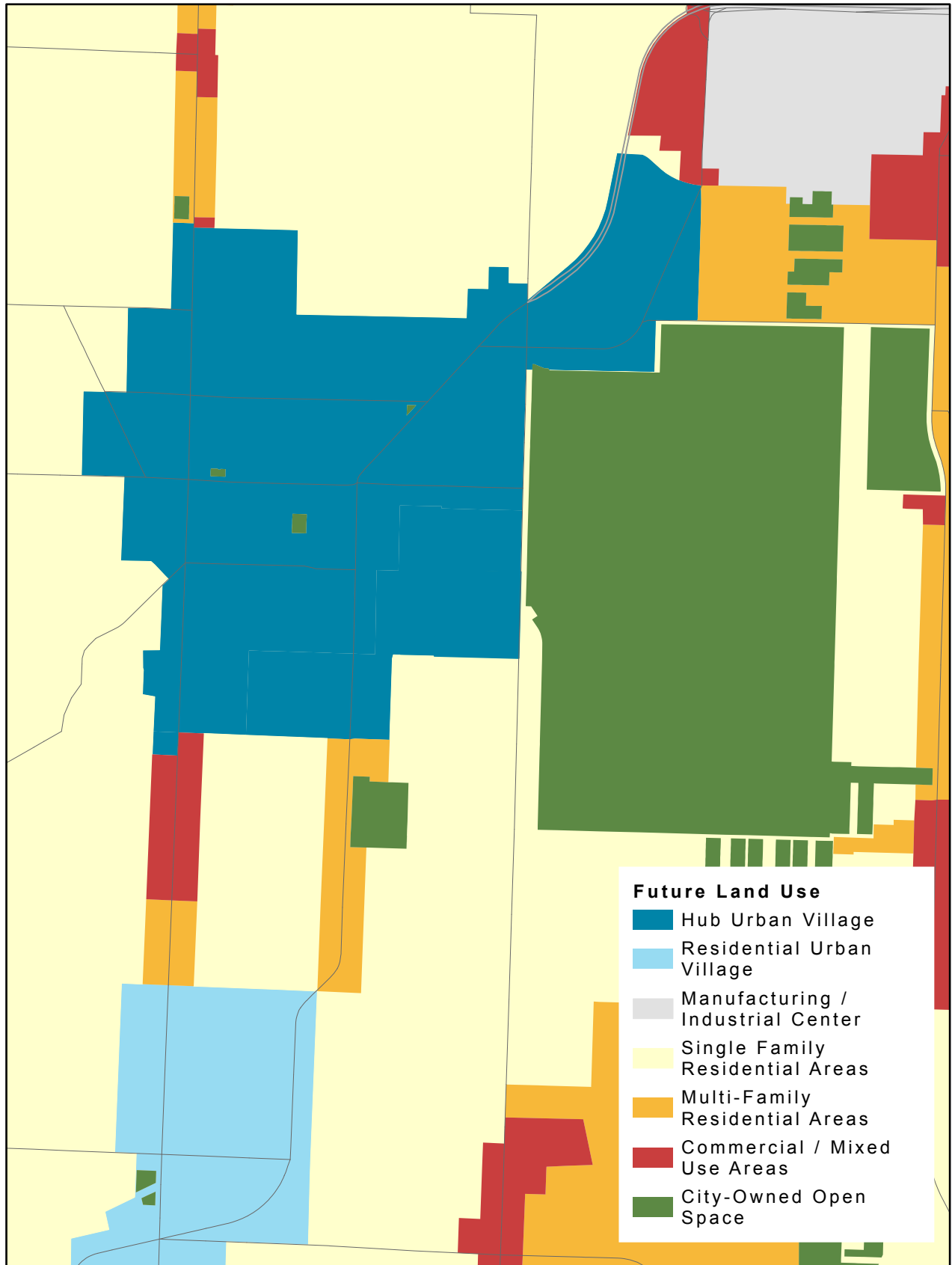
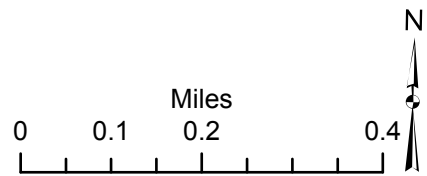
West Seattle Junction Hub Urban Village Future Land Use Map Before Change



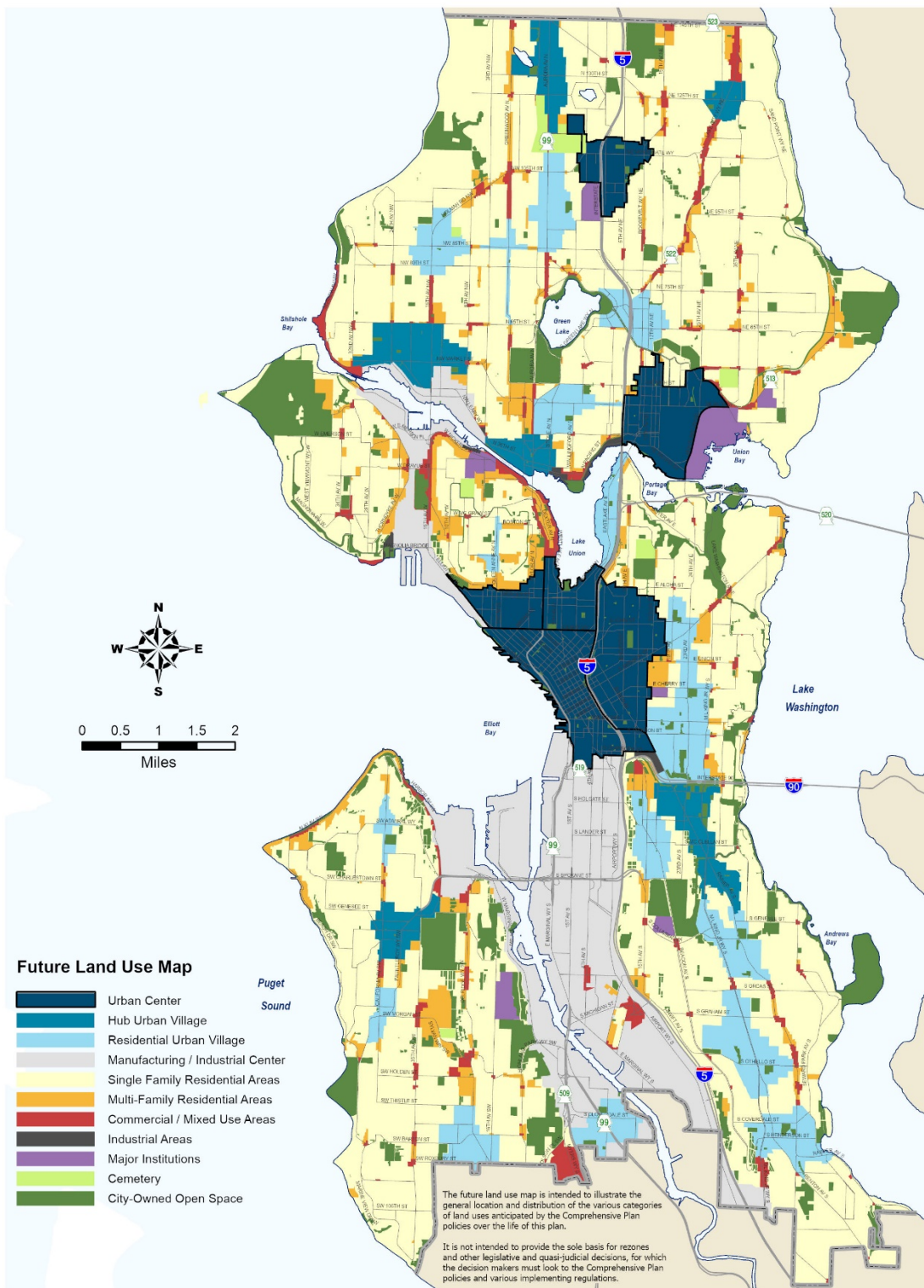
West Seattle Junction Hub Urban Village Proposed Changes to Urban Village Boundary and Future Land Use



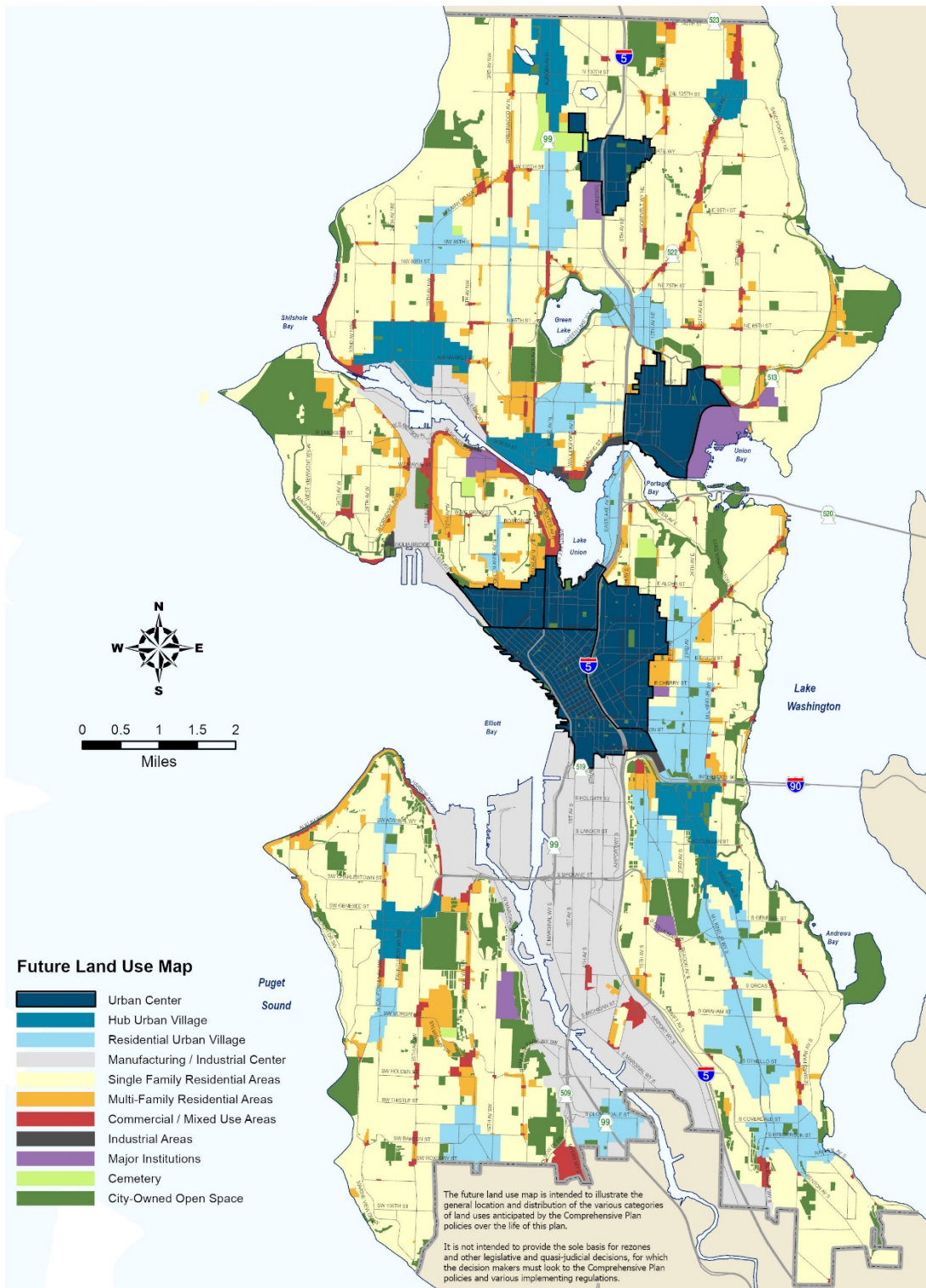
West Seattle Junction Hub Urban Village Future Land Use Map After Change



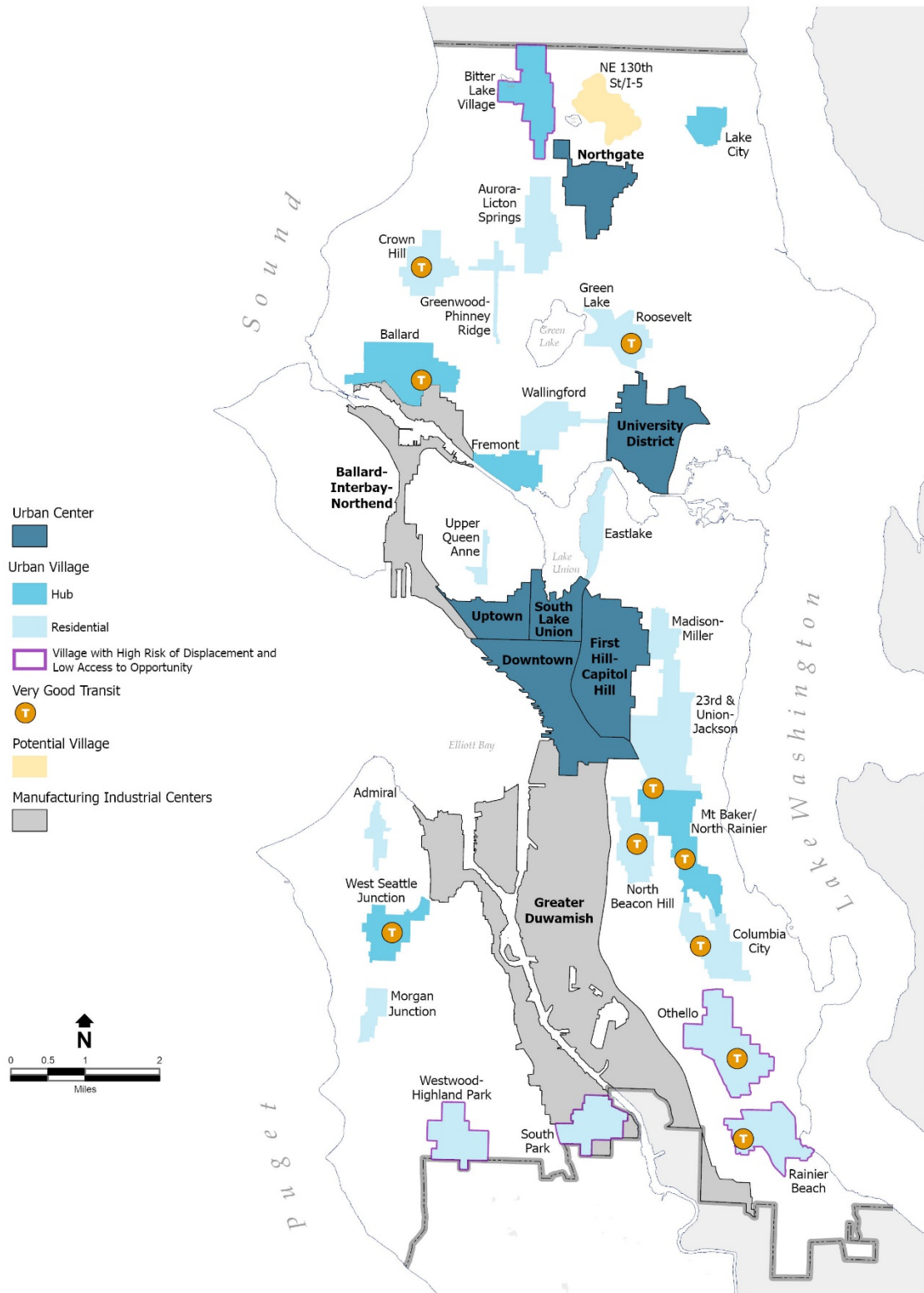
Map A: Future Land Use Map Before Change



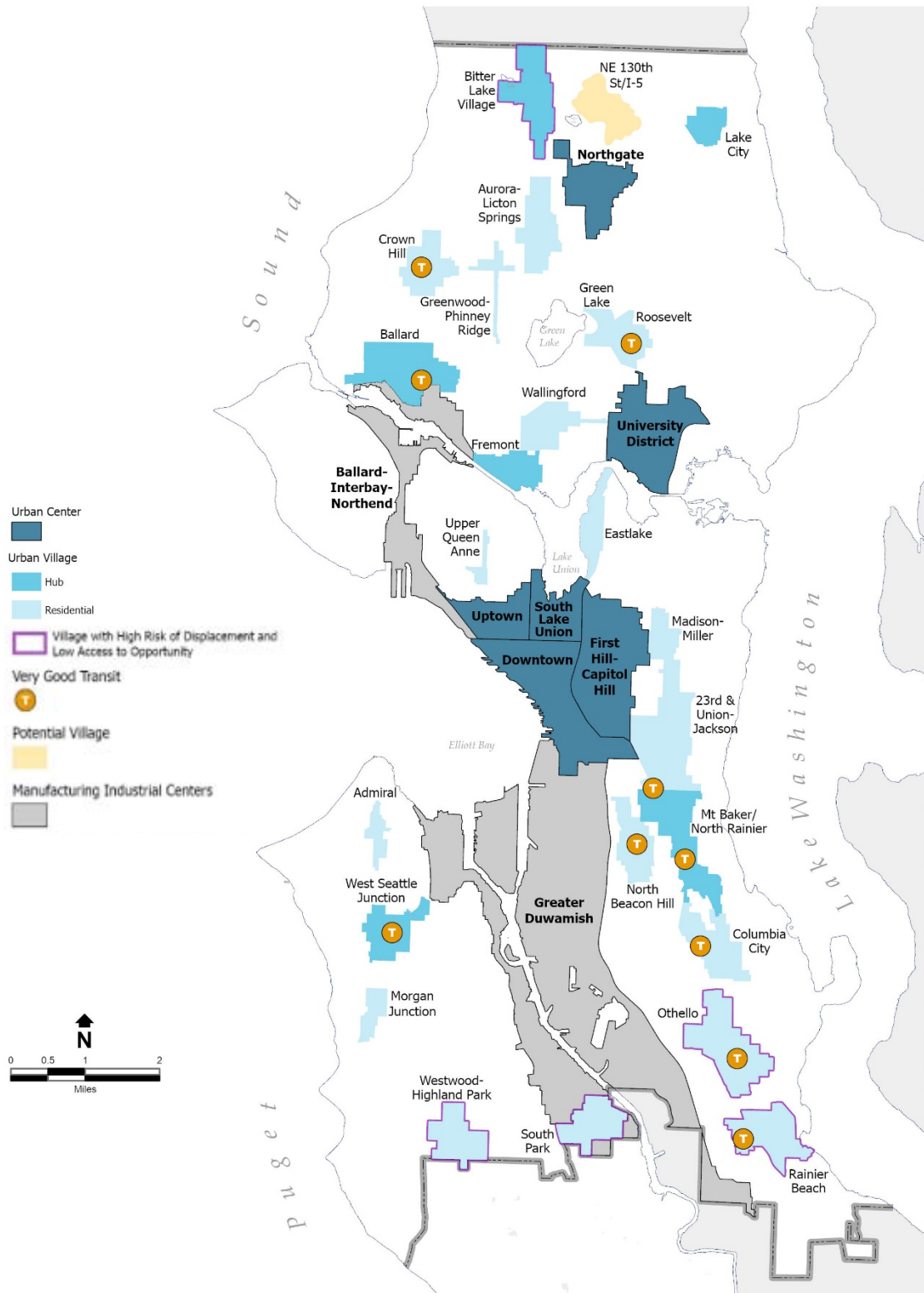
Map B: Future Land Use Map After Change



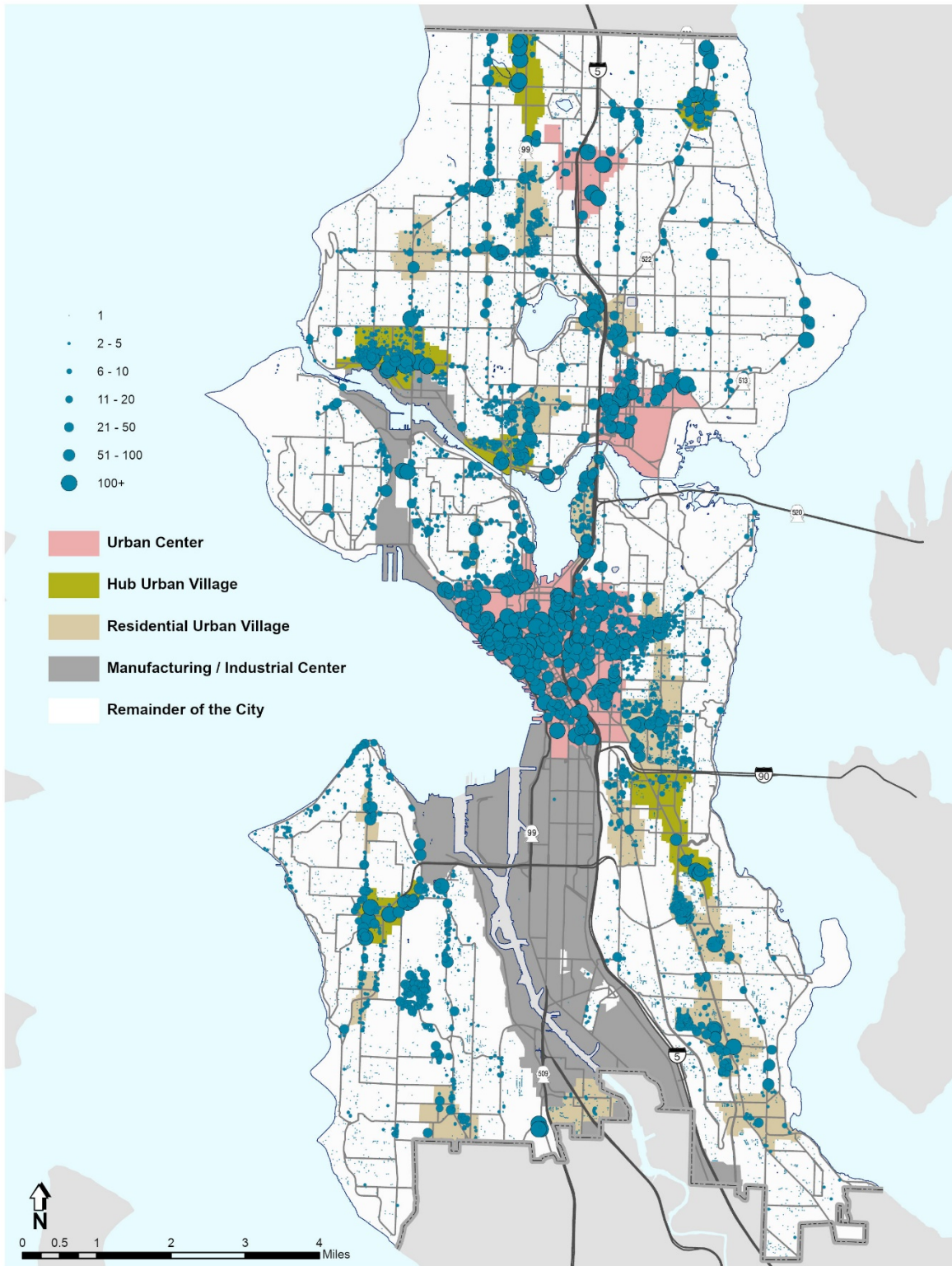
Map C: Growth Strategy Figure 4 Before Change



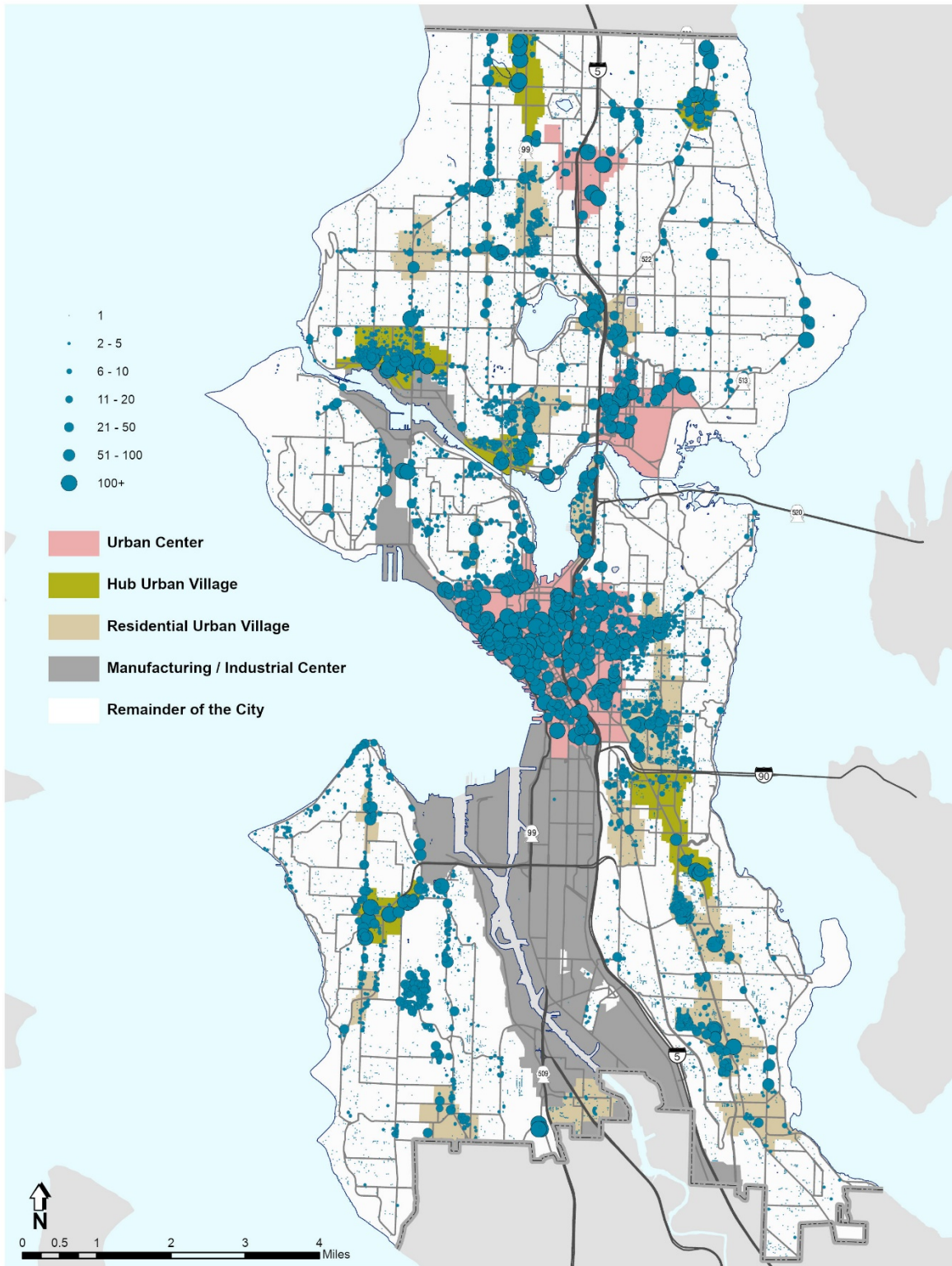
Map D: Growth Strategy Figure 4 After Change



Map E: Map on page 12 - Housing Units Built 1995-2014 Before Change

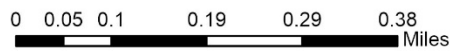
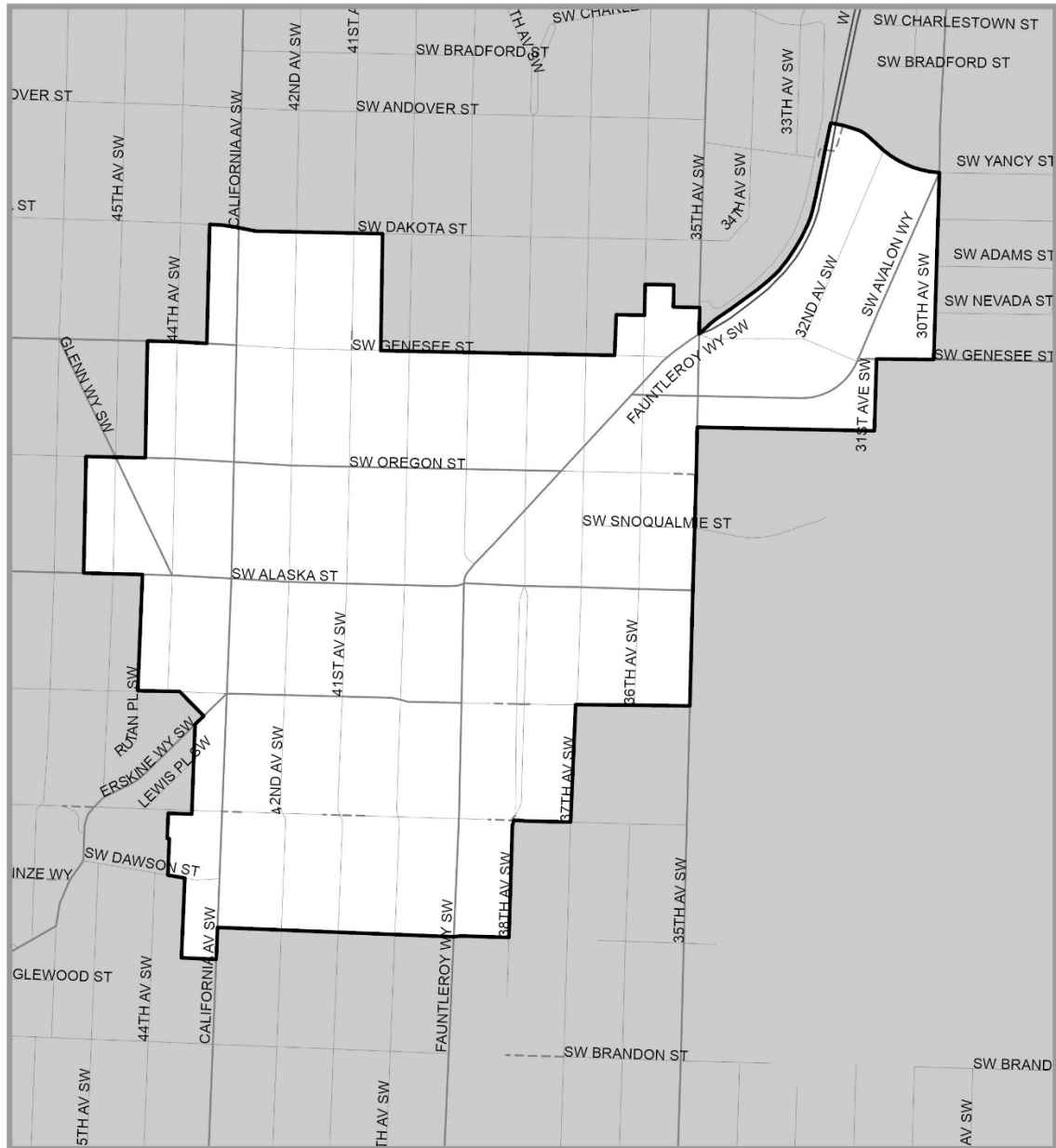


Map F: Map on page 12 - Housing Units Built 1995-2014 After Change



Map G: Map on page 407 - West Seattle Junction Hub Urban Village Before Change

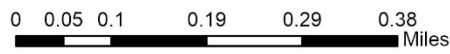
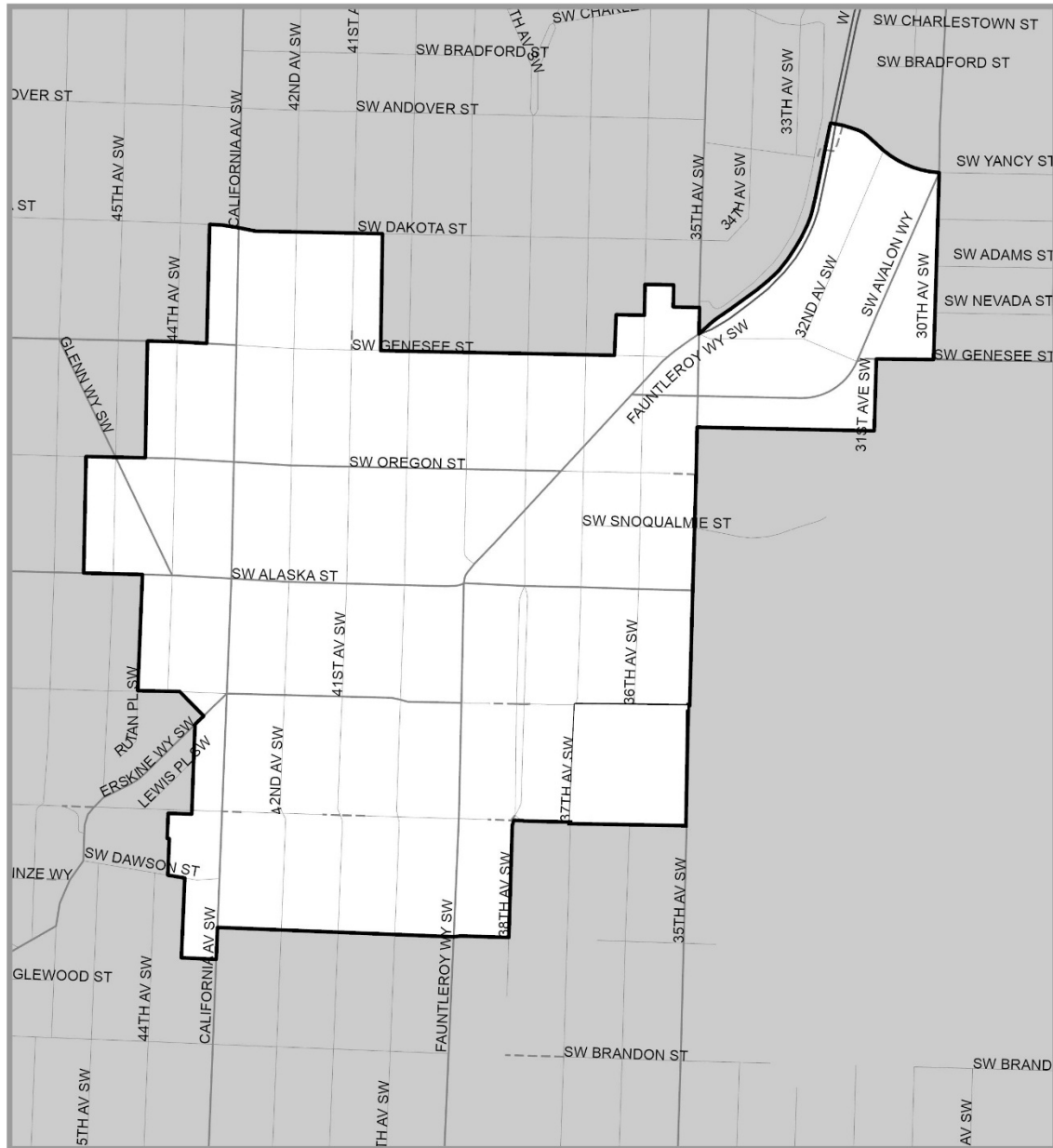
WEST SEATTLE JUNCTION Hub Urban Village



— CENTER / VILLAGE BOUNDARY

Map H: Map on page 407 - West Seattle Junction Hub Urban Village After Change

WEST SEATTLE JUNCTION Hub Urban Village



— CENTER / VILLAGE BOUNDARY

Delridge Neighborhood Plan Amendments

Delridge

PARKS & OPEN SPACE GOAL

- D-G1** A Delridge community that is integrated with the natural environment, where open space and natural areas are preserved, interconnected, well maintained, and safe for wildlife and residents including children.
- D-G2** Parks and recreation resources that meet the needs of all Delridge communities and provide opportunities to address health inequities.

PARKS & OPEN SPACE POLICIES

- D-P1** Seek to create a comprehensive open space network in Delridge that integrates the residential and business environments with natural areas for public access and wildlife habitat.
- D-P2** Seek to protect from development: natural open space areas, wetlands, drainage corridors, and woodlands that contain prime wildlife habitat along the Longfellow Creek, Puget Creek, and Duwamish River drainage corridors and valley hillsides.
- D-P3** Strive to create a comprehensive system of trails for recreational hikers, walkers, and joggers, linking residential areas to parks and community facilities, schools, business nodes, and transit systems.
- D-P4** Work with community groups and neighborhood stakeholders to provide stewardship of the natural environment using appropriate city resources in partnership with community organizations, schools, and others.
- D-P5** Support year-round programming to help sustain Delridge's identity as a neighborhood where art, nature and culture are shared and sustained.
- D-P6** Use existing public spaces to provide recreational opportunities (especially play areas) for a range of children and youth.
- D-P7** Improve walking routes to playgrounds especially where playgrounds are located on school grounds where improvements can enhance safe school access.
- D-P8** Work with communities to add programming or improvements that are appropriate for the character of each park to increase overall use and opportunities for physical activity.

- D-P9** Support the Delridge Community Center, the Southwest Teen Life Center, and organizations like Youngstown Cultural Arts Center in providing a range of culturally supportive programming.
- D-P10** Increase use of Delridge’s park and cultural facilities by engaging historically underrepresented communities and using a multicultural design process in identifying parks and recreation needs and defining physical and programmatic improvements.
- D-P11** Seek grants and build partnerships to develop, manage, program, and as needed, acquire parks and cultural facilities.
- D-P12** Consider the health inequities reported in the Delridge Health Reporting Area when selecting physical improvements and programs, paying special attention that the improvements provide increased opportunity to those experiencing health inequities.
- D-P13** Seek to reduce pollution into Longfellow Creek by installing Natural Drainage Systems in the public right-of-way, where feasible, as part of the Integrated Plan.

LAND USE GOALS

- D-G((2))3** A series of mixed-use activity nodes or centers along Delridge Way clustering commercial, business, entertainment, community uses, and public facilities.
- D-G((3))4** The mixed-use neighborhood anchors provide services to residents in compact areas accessible from walkways, park trails, bikeways, transit routes, and local residential streets.

LAND USE POLICIES

- D-P((5))14** Seek to create special identities for unique districts or places, particularly the neighborhood anchors along Delridge Way, using distinctive and unique gateways, pedestrian amenities, streetscape, and other furnishings and designs.
- D-P((6))15** Strengthen the local Delridge business community by participating in public/private ventures to provide public benefits as appropriate to meet Delridge’s long-range goals.
- D-P((7))16** Seek to develop a pedestrian-oriented environment along Delridge Way that integrates adjacent storefront activities with transit, parking, bikeways, and walking areas. Seek to calm traffic on Delridge Way through the neighborhood anchors.

- D-P((8))17** Seek to enhance pedestrian improvements and commercial services in the neighborhood anchor at Delridge and Andover. This anchor should serve as a major local employment center, while facilitating the flow of traffic through the node and onto the West Seattle bridge.
- D-P((9))18** Seek to improve the “community campus” neighborhood anchor at Delridge and Genesee. This anchor should provide educational, recreational, cultural, and social opportunities (and potentially increased housing) to the neighborhood, by ~~((preserving and redeveloping the Old Cooper School and by coordinating, expanding, and improving programs between the local agencies))~~ sustaining, coordinating, and improving programs offered by Youngstown Cultural Arts Center and its tenant organizations, Southwest Youth and Family Services, and the Delridge Community Center.
- D-P((10))19** Seek to improve the neighborhood anchor at Delridge and Brandon, through means including the continuation of the neighborhood commercial zone in the vicinity, along Delridge Way south to SW Juneau Street. This anchor should provide neighborhood-oriented retail and personal services and neighborhood-based city services (such as a neighborhood service center and library) for the nearby neighborhoods and existing neighborhood businesses.
- ~~**D-P11** To support the vision of the neighborhood anchor designated at Delridge and Brandon, LDT zoning is appropriate, along both sides of SW Brandon Street between 23rd Avenue SW and 26th Avenue SW; and along both sides of SW Findlay Street between 23rd Avenue SW and 26th Avenue SW.))~~
- D-P((12))20** Seek to improve the neighborhood anchor at Delridge and Sylvan/Orchard Ways, which will provide goods, services, entertainment, and transit services to the West Seattle area.
- D-P21** Seek to increase construction, by new development, of right-of-way improvements that collect and convey stormwater, and improve pedestrian mobility.
- D-P22** Undertake Sound Transit 3 station design guidance and station area planning to support community-oriented commercial development, additional residential development, and improved access by biking, walking, and taking transit. A station access plan should also enable car drop-off at the station given the challenges to accessing the station by foot.

TRANSPORTATION GOALS

D-G((4))5 A transportation system that provides convenient access for local travel within the neighborhood, and access to principal employment, shopping, and entertainment activities in the surrounding area.

D-G((5))6 A community that provides safe, convenient, and efficient bikeway access to local and regional destinations.

TRANSPORTATION POLICIES

D-P((13))23 Encourage high-quality bus service with effective and efficient transfer opportunities, and facilities that provide adequate safety and security.

D-P((14))24 Seek to use park-and-ride lots for multiple purposes such as serving as off-peak period recreational trailheads.

D-P((15))25 Strive for high-quality roadway maintenance to ensure safe and efficient travel for pedestrians and vehicles.

D-P26 Seek to design Delridge Way SW as a multimodal corridor that supports Delridge’s vision for community development, with improved transit and non-motorized transportation choices.

D-P27 Maintain and improve unopened rights-of-way to provide walking and biking connections where roads are not feasible.

D-P28 Increase the number of streets with sidewalks, implementing the Pedestrian Master Plan and community priorities for new sidewalks.

D-P29 Implement a complete network of all ages and abilities bicycle facilities that provide connections to local and regional destinations.

D-P30 Maintain and seek opportunities to expand trails in Delridge to provide additional connections to parks and other destinations throughout the neighborhood.

D-P31 Partner with organizations such as Feet First, school-based programs, and the community center to offer culturally responsive programs that promote bicycling and walking.

HOUSING GOALS

- D-G(~~(6)~~)7** A community with a range of household types, family sizes, and incomes—including seniors and families with children.
- D-G(~~(7)~~)8** A community that preserves and enhances the residential character of single-family neighborhoods within the Delridge community while providing a range of housing types to fit the diversity of Delridge households.

HOUSING POLICIES

- D-P(~~(16)~~)32** Seek to use regulatory tools or other means to preserve open space and natural features while increasing the variety of housing types available to the community.
- D-P(~~(17)~~)33** Encourage the rehabilitation of substandard housing.

COMMUNITY & CULTURE GOALS

- D-G(~~(8)~~)9** A diverse community of neighborhoods with people from many cultures, longtime residents, and newcomers, young and old, people who own and rent homes and who work in a variety of jobs. A community where all people feel safe and welcome, have the opportunity to participate in their community and express what is most important to them, and which meets its residents' social, economic, and recreational needs.

COMMUNITY & CULTURE POLICIES

- D-P(~~(18)~~)34** Seek to provide opportunities for multicultural sharing, education, understanding, and celebration through ~~((community participation))~~ inclusive engagement and appreciation efforts, and through the provision of public meeting facilities.
- D-P(~~(19)~~)35** Seek to inventory and promote neighborhood-based emergency preparation plans.
- D-P(~~(20)~~)36** Strive to build strong partnerships with local crime prevention efforts.
- D-P(~~(21)~~)37** Seek to involve the whole community to make services available to the broadest cross section of the community by developing programs that address the needs of individuals and families.
- D-P(~~(22)~~)38** Seek to develop cultural programs (such as art, music, and theater), and support community programs. Seek to provide public facilities that support the cultural programs.

- D-P39** Strengthen partnerships and work with communities of color, immigrants, refugees, native peoples, people with low incomes, youth and limited English proficiency individuals in Delridge when developing and implementing plans that affect the distribution of resources, and programs that serve the community.
- D-P40** Seek to build community leadership and the capacity of Delridge-serving organizations.
- D-P41** Use a race and social justice analysis, such as the Racial Equity-Toolkit, to establish racial equity outcomes when scoping capital projects and significant programs.

PLAN STEWARDSHIP GOAL

- D-G((9))10** A community fully involved in efforts to implement the neighborhood plan, and to maximize the efficient use of available resources.

PLAN STEWARDSHIP POLICIES

- D-P ((23))42** Promote partnerships with projects that can leverage City efforts toward the implementation of the Delridge neighborhood plan.
- D-P((24))43** Support community-based efforts to implement and steward the plan.

ECONOMIC DEVELOPMENT GOAL

- D-G11** A community that offers pathways to jobs and wealth creation.

ECONOMIC DEVELOPMENT POLICIES

- D-P((25))44** Seek to create greater employment and shopping opportunities within the Delridge neighborhood.
- D-P((26))45** Seek to participate with other public agencies and private interests in marketing projects, labor force training programs, and other efforts that support community residents in need of employment.
- D-P((27))46** Encourage local business development opportunities, particularly for small businesses that may be owned by or employ Delridge residents.

ACCESS TO AFFORDABLE, HEALTHY FOOD GOALS

D-G12 A community where residents have the economic ability, mobility, and choices to access healthy, affordable, and culturally appropriate food.

ACCESS TO AFFORDABLE, HEALTHY FOOD POLICIES

D-P47 Strive to increase opportunities to access affordable healthy food along Delridge Way SW near Brandon Junction or Sylvan Junction.

D-P48 Promote and support access to urban farming and education about growing food in ways that are accessible by Delridge's diverse cultures.