

SEATTLE CITY COUNCIL
CIVIC DEVELOPMENT, PUBLIC ASSETS AND NATIVE
COMMUNITIES COMMITTEE
FEBRUARY 7, 2018

Burke-Gilman Property Donation

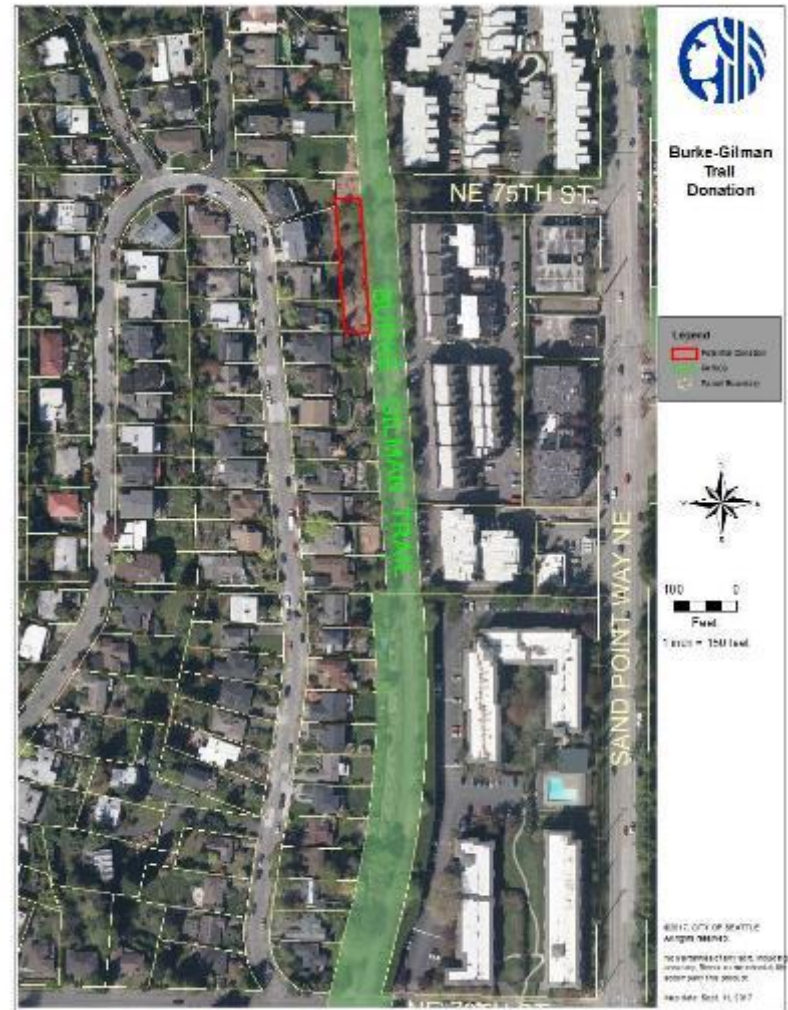
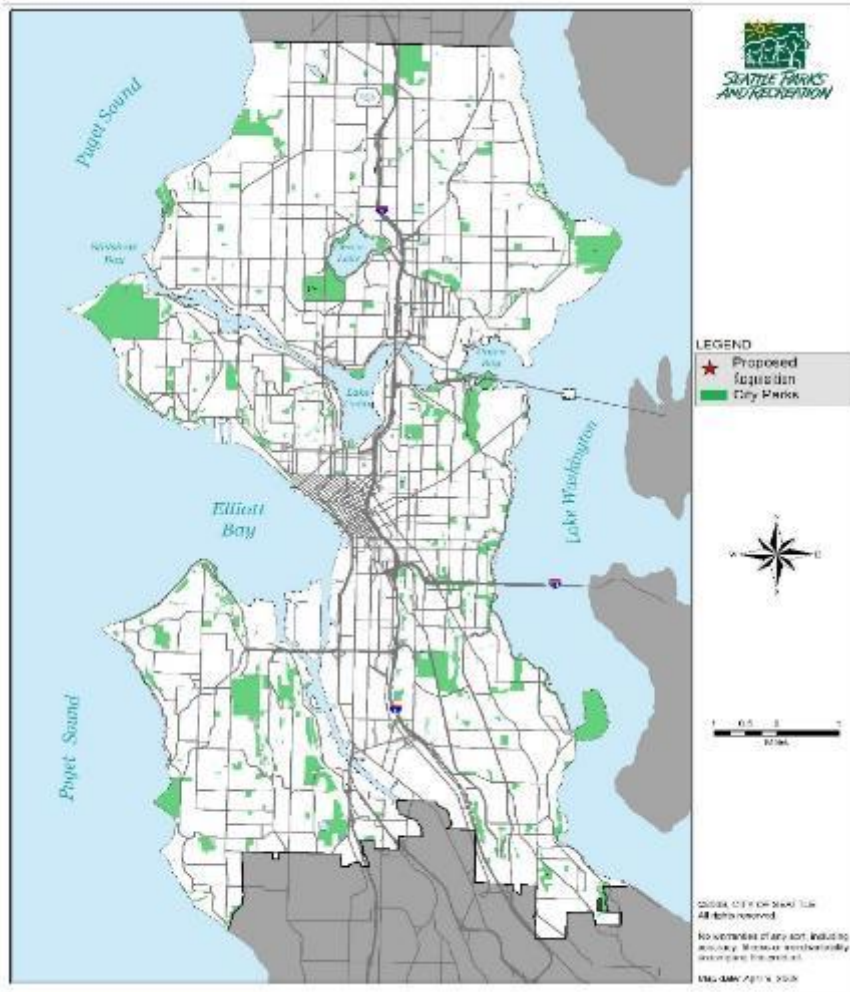


Seattle
Parks & Recreation

healthy people healthy environment strong communities



Burke-Gilman Donation



Property size: 8,507 square feet

Burke-Gilman Donation



Questions?



Seattle
Parks & Recreation

healthy people healthy environment strong communities