

Thornton Creek Property Purchase

Seattle City Council

Transportation & Seattle Public Utilities Committee

April 4, 2023



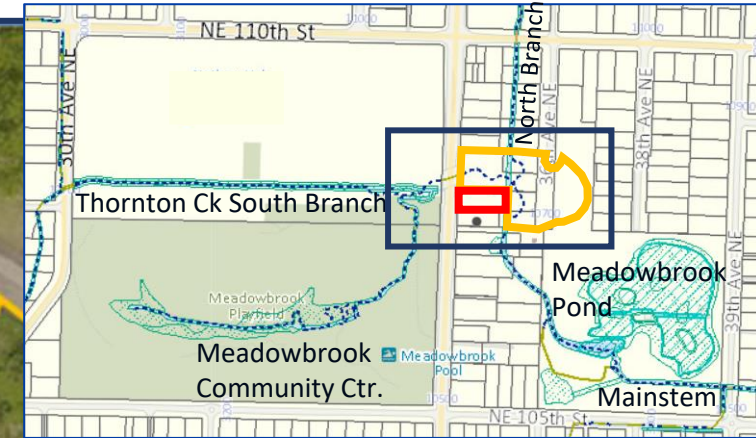
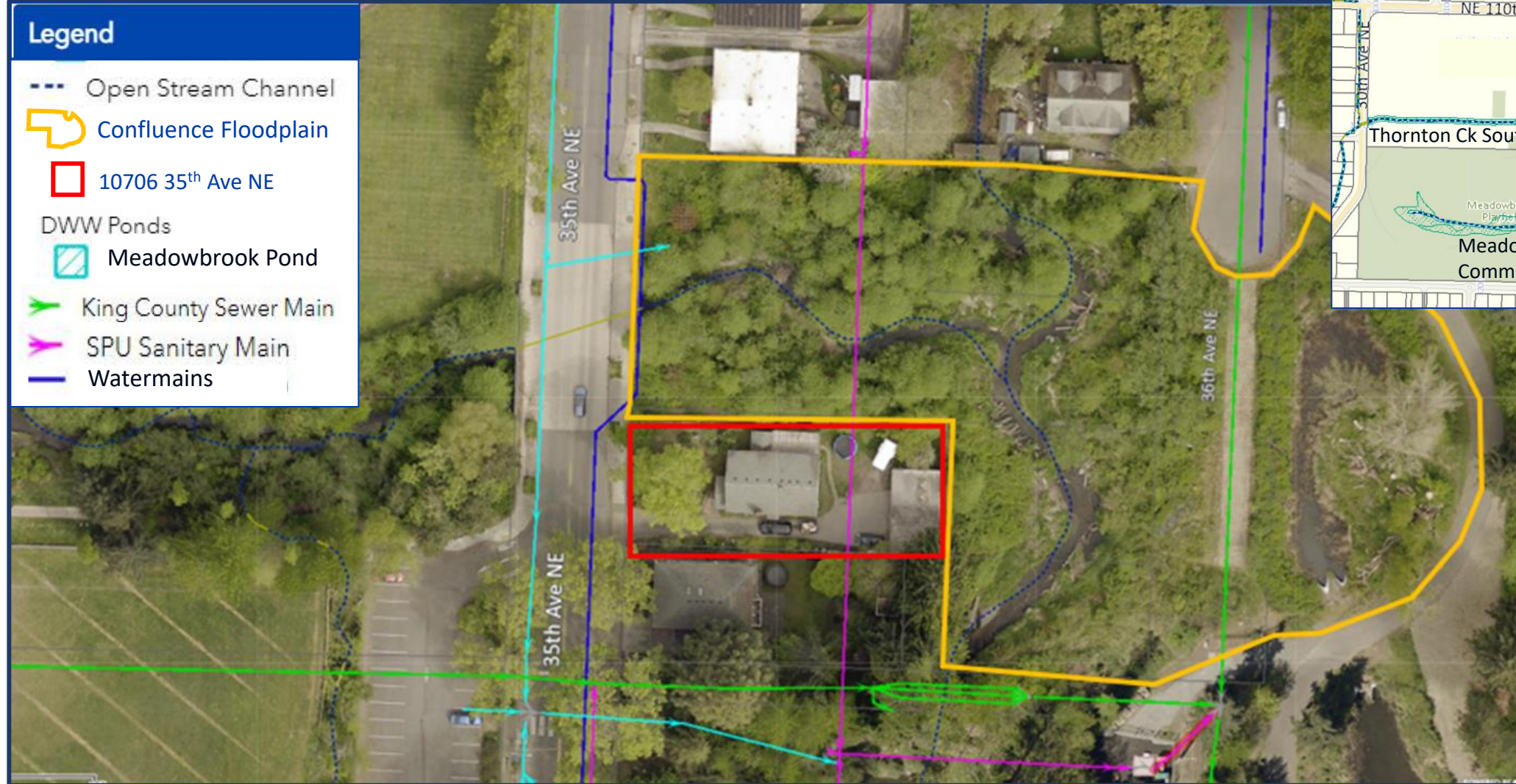
Purpose of Legislation

This legislation would authorize the acquisition of the property at 10706 35th Ave NE to expand the footprint of the Thornton Creek Confluence Floodplain Project.

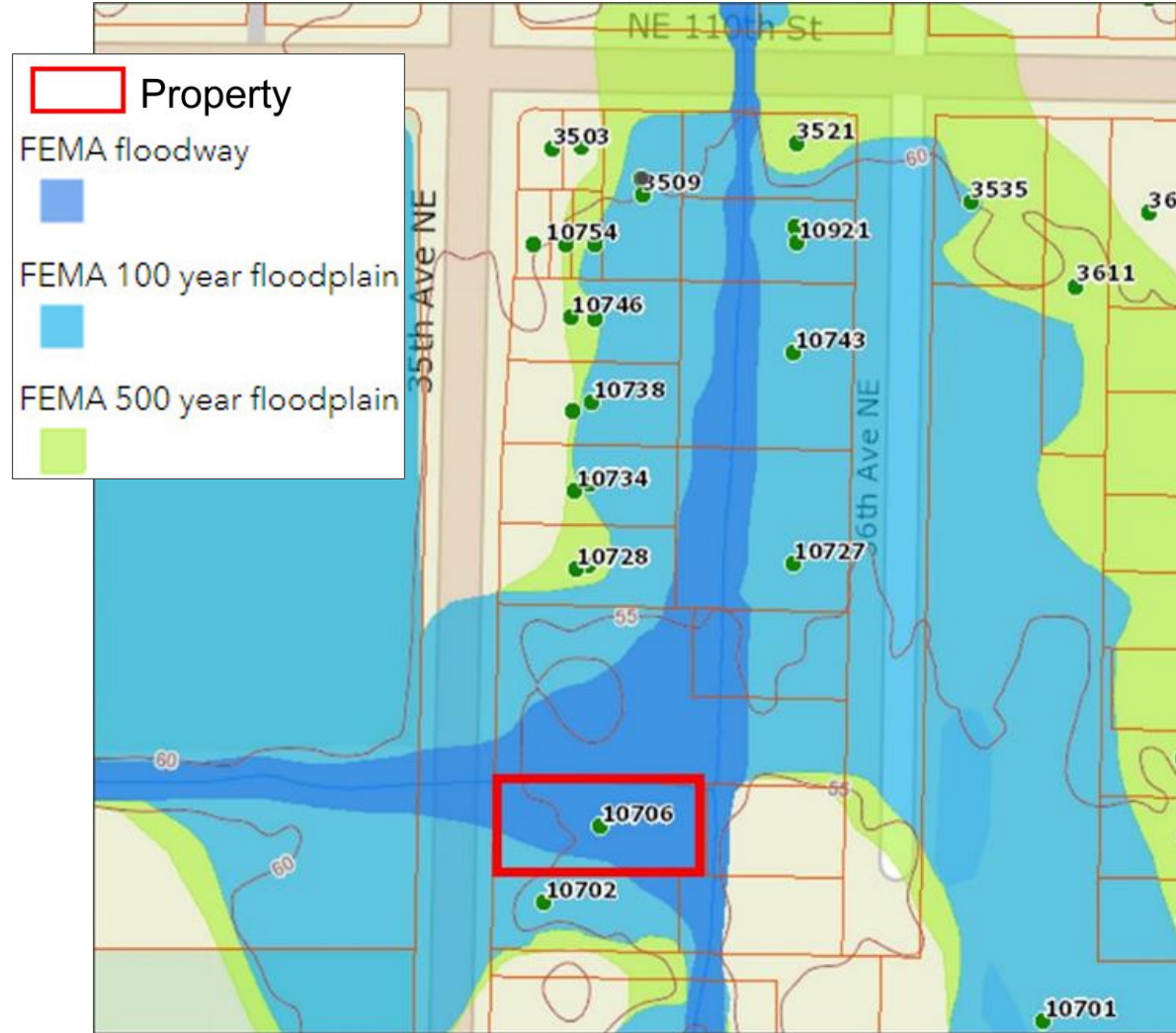
Property Location - Thornton Confluence Floodplain Project

Legend

- Open Stream Channel
- 👉 Confluence Floodplain
- 📏 10706 35th Ave NE
- DWW Ponds
 - 🟩 Meadowbrook Pond
- 🟢 King County Sewer Main
- 🟡 SPU Sanitary Main
- 🟠 Watermains



Property Location - FEMA Floodway



Benefits of Acquiring Property

- Expands Confluence floodplain footprint for water storage and increase climate resilience.
- Increases storage to protect Meadowbrook Pond from sediment pulses. Decreases maintenance costs.
- Provides access point to Confluence site for maintenance. Decreases life cycle costs.
- Expands public access & creates a community stewardship space for school & outreach activities.
- Allows for channel widening to slow erosive storm flows where a county sewer trunk line and a SPU pump station infrastructure are located. Reduces risk & life cycle costs.
- Restores the area with trees & plants to provide habitat & water quality benefits.

Property Acquisition

- Seattle Public Utilities entered into a Purchase & Sale Agreement with property owners on July 20, 2022.
 - Purchase Price: \$849,950
 - Property Closing Date: April 28, 2023

Subscribe

Latest Issues

SCIENTIFIC AMERICAN®



Engineering with Nature
sustainable solutions for a changing climate



Questions?



<https://www.scientificamerican.com/article/to-revive-a-river-restore-its-hidden-gut1/>

Seattle Public Utilities



City of Seattle