

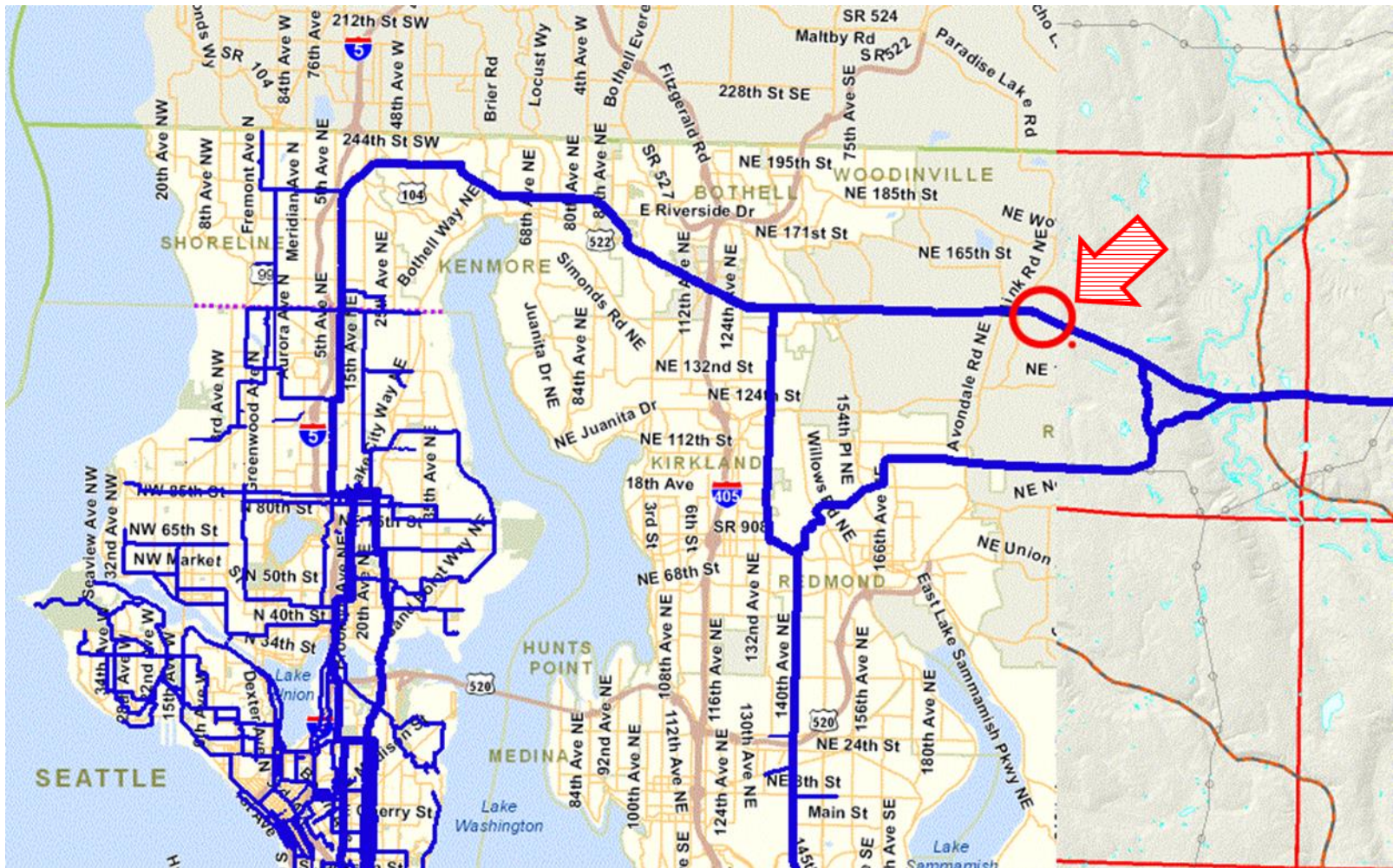
# Seattle City Council

## Seattle Public Utilities and Neighborhoods Committee

Granting Easement to  
Puget Sound Energy

Seattle  
 Public  
Utilities

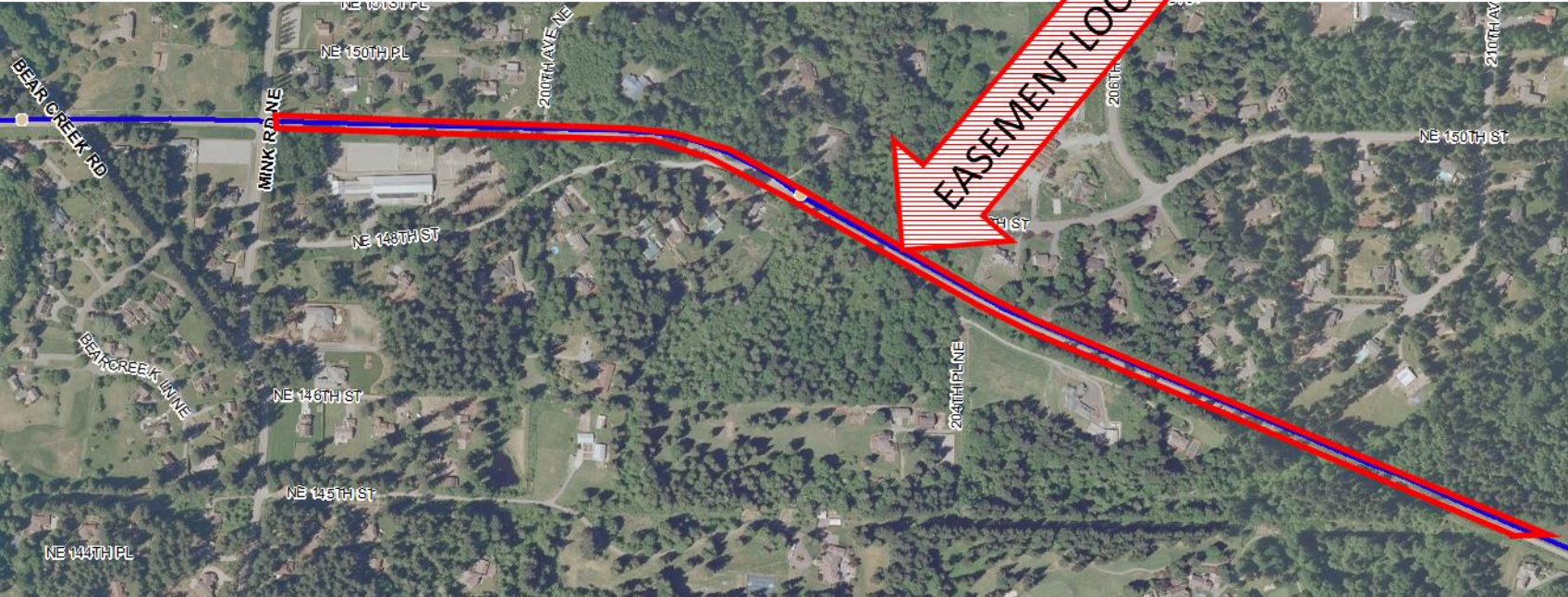
# Location: Tolt Pipeline Right of Way



# Summary of Legislation

- Puget Sound Energy needs the 10 foot wide Easement along approximately 4500 feet of the City's Tolt Water Transmission Pipeline Right of Way for electrical power distribution purposes

# Easement Location in Woodinville



# Benefits to Puget Sound Energy

- The new electric distribution cable will enable PSE to provide more reliable electric power to the service area
- Pipeline Right of Way provides a direct route for installation

# Benefits to the City

- The City will receive \$248,639 for the easement
- PSE paid for City staff time to review & approve plans and prepare Easement & Ordinance
- Sustainable use of Pipeline Right of Way