

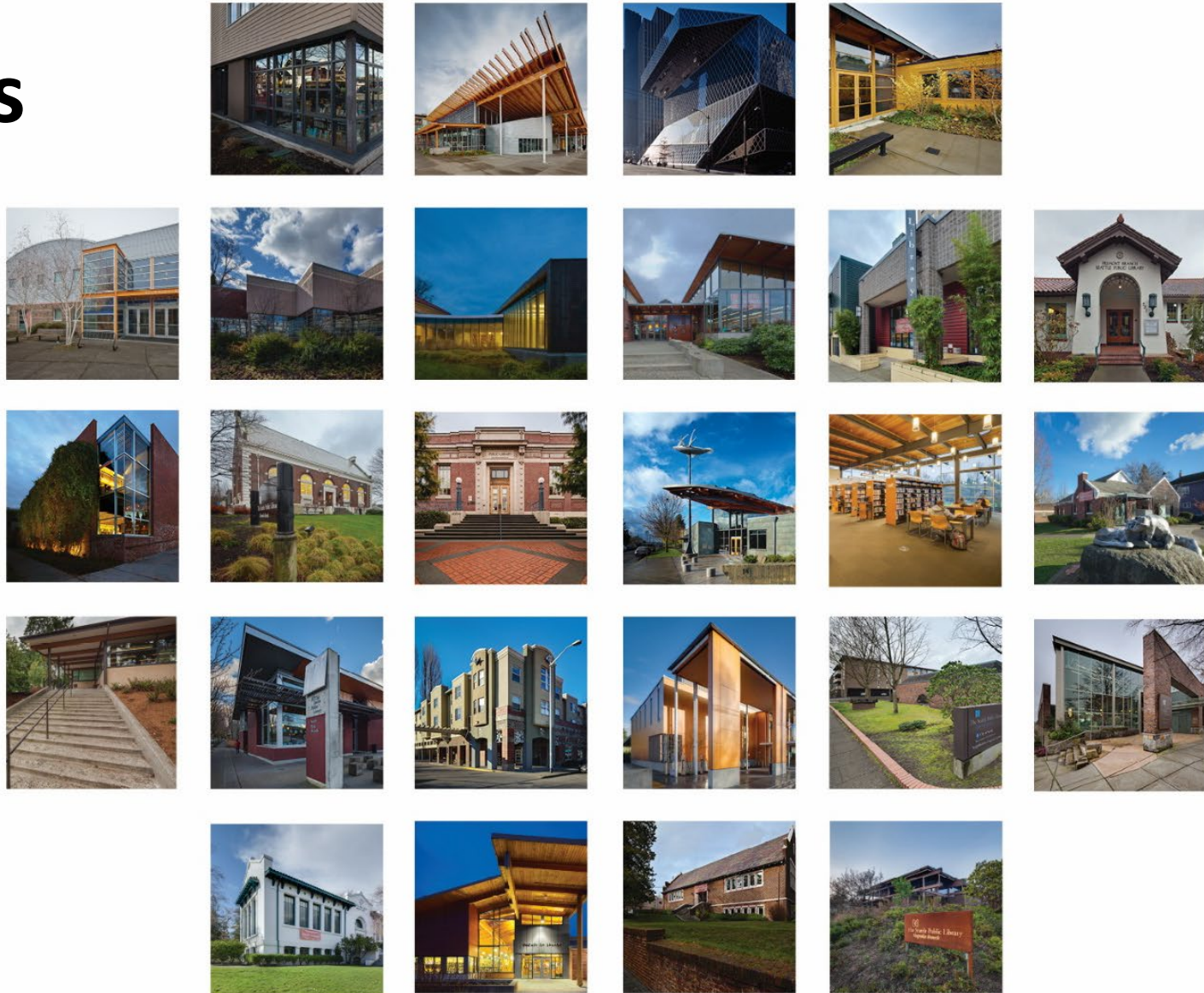
Welcome to the Library!

An introduction to The Seattle Public Library

January 2026

Library Resources

- Central Library and 26 neighborhood branches
- Maintenance and Operations Center
- 650 wonderful Library staff (612 FTE)
- 2019 Library Levy
- Fleet vehicles (including the Bookmobile!)



Library Governance

Five-member Board of Trustees

Members serve five-year terms

Current members include:



Yazmin Medhi
Board president
2022-present



W. Tali Hairston, Ph.D.
Board vice-president
2020-present



Carmen Bendixen
2020-present



Ron Chew
2016-present



Faith Pettis
2024-present

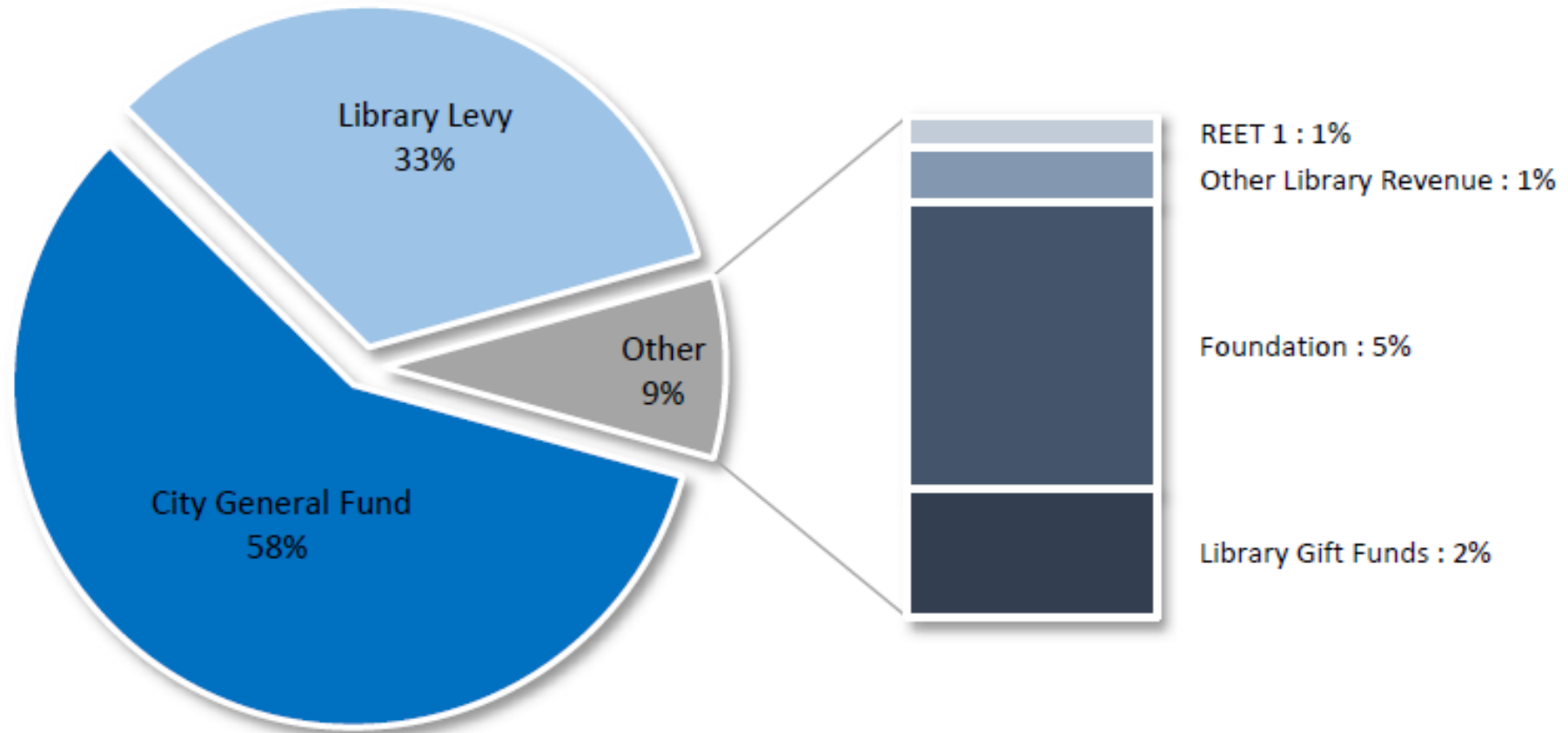
Library Usage from 2025



- 329,000 active patrons in 12 months
- 2.9 million physical and digital items in our collection
- 6,100 classes, events and activities with 118,000 attendance*
- 37,000 questions answered by Virtual Assisted Information Services
- 12.7 million physical and digital checkouts
- 369,000 public computer sessions

*Attendance total does not yet include full December 2025 counts.

2026 Library Budget



Library Budget

How \$1 is spent at the Library



76%
Personnel
Costs



10%
Books
& Materials



1%
CIP & Major
Maintenance



5%
Facilities,
Rent,
Utilities, Eqpt



8%
Other

Library Services



Books and materials

- 2.9 million items in our collection
- 12.7 million total circulation in 2025



Information and reference

- In-person service offered across system.
- 37,000 questions answered in 2025.
- Includes social service referrals

Library Services



Programs for All Ages

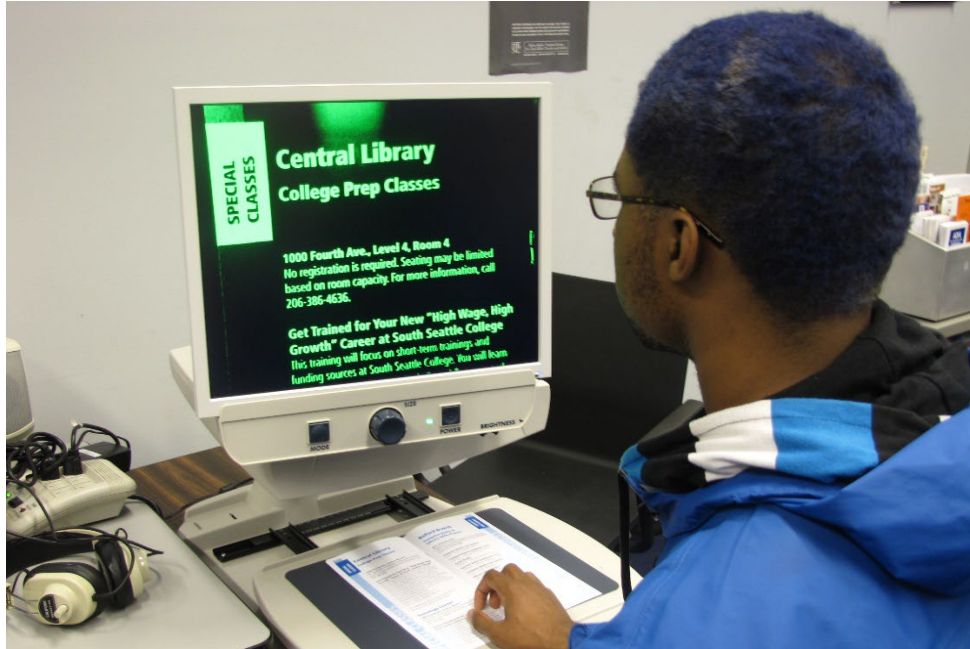
- Free classes, events and activities at Library branches, in the community and online



Special Collections

- Over 50,000 items documenting and exploring the culture and history of Seattle and the Pacific Northwest

Library Services



Library Equal Access Program

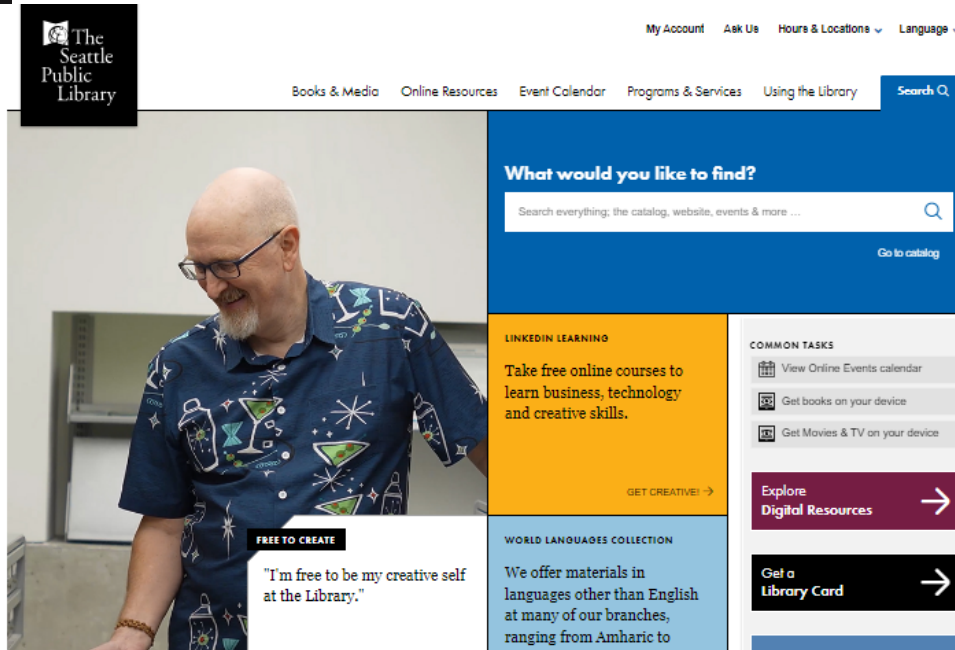
- Assistive equipment & software make it easier for people with vision, hearing, and mobility impairments to use computers.



Technology Access

- Computers, internet/Wi-Fi, tablets, printers, scanners, fax, self-checkout, and pick-up lockers
- Provide hot spots to Tiny House Villages and sanctioned encampments

Library Services



The Library Online

- www.spl.org
- 5.5 million visits in 2025



Publicly Available Spaces

- Including study rooms, meeting rooms, music practice rooms and event rental spaces

Library Outreach and Engagement



Mobile Services

- 100+ monthly Bookmobile visits
- Home service and books by mail
- Community events and outreach



Community Listening

- Ongoing work throughout the community
- Focused conversations and surveys on Strategic Plan efforts and Levy planning

Opportunities

- Continued implementation of SPL's Strategic Plan (2024-2034)
- Seismic retrofit and upgrade of University Branch
- Deployment of new Integrated Library System
- Development of Inclusion and Belonging framework
- Renewal of the 2019 Library Levy

Questions?

Thank you!